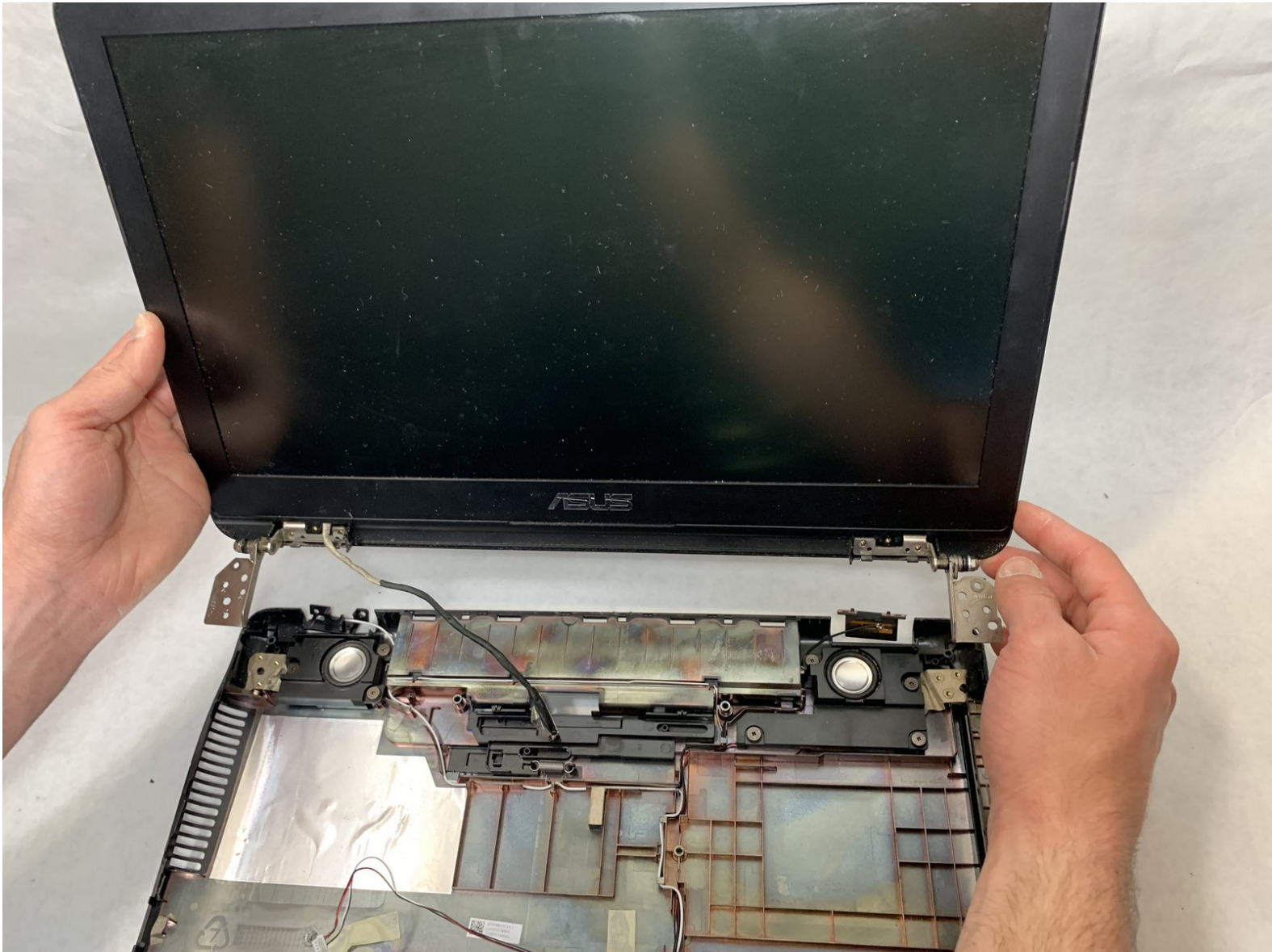




# Asus GL551JW-AH71 Display Assembly Replacement

This guide outlines how to replace the display assembly in the Asus GL551JW-AH71.

Written By: Alec Pimentel



# INTRODUCTION

This guide outlines how to replace the display assembly for the Asus GL551JW-AH71.

---


## TOOLS:

- [Paper Clip](#) (1)
  - [Phillips #000 Screwdriver](#) (1)
  - [iFixit Opening Tools](#) (1)
  - [Phillips #0 Screwdriver](#) (1)
-

## Step 1 — Battery



- Close the device and lay it upside down.

 Unplug the device and make sure the device is powered off before removing the battery.

## Step 2



- Move the battery eject button to the right. The battery will be ejected.

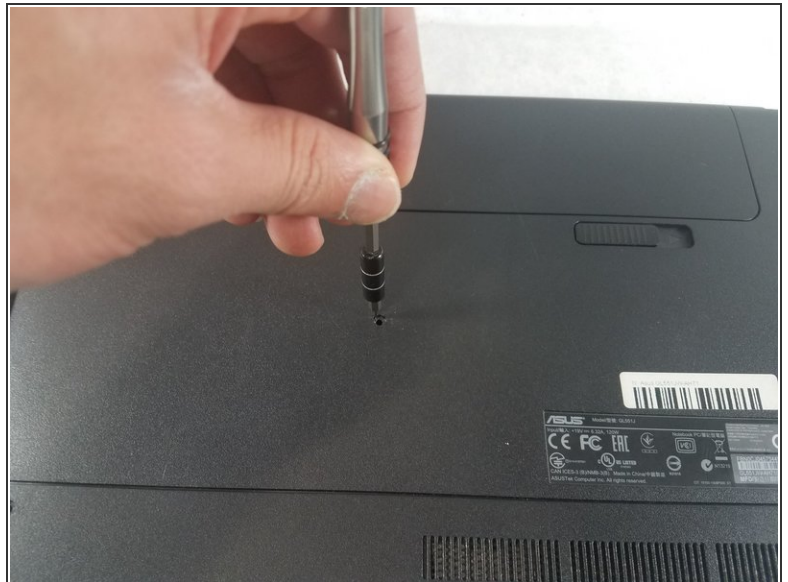


### Step 3



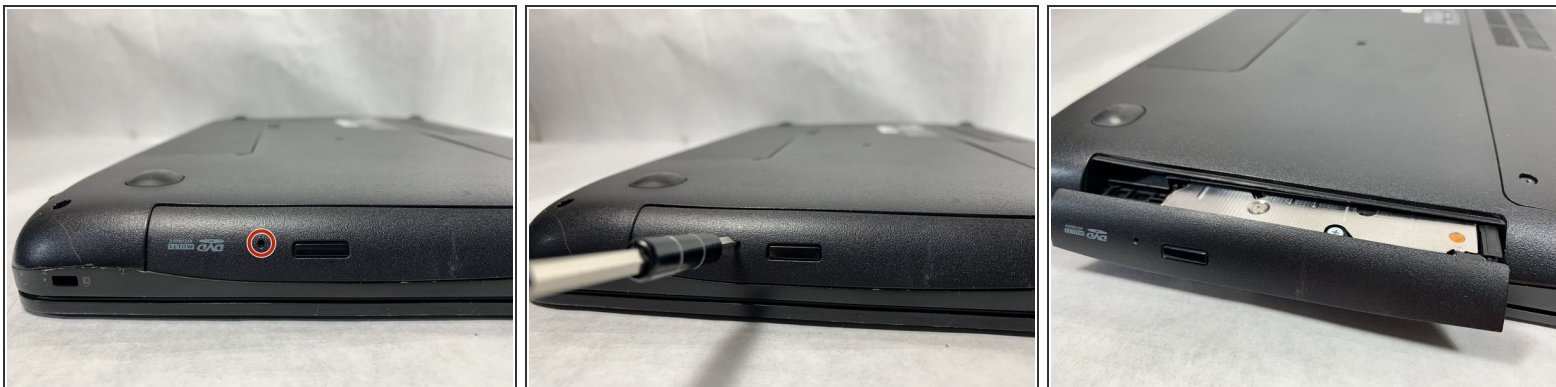
- Grab the battery and remove it from the device.

### Step 4 — Optical Drive



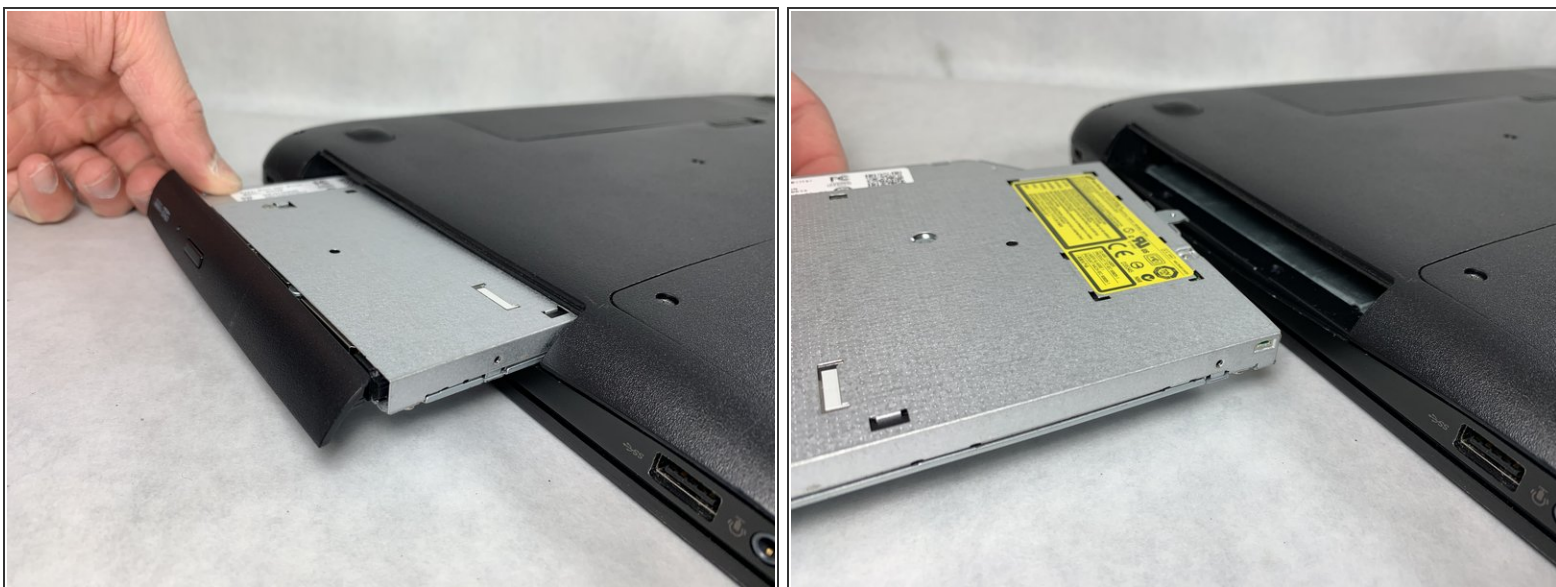
- Use a Phillips #000 screwdriver to remove the single 10mm optical drive screw.

## Step 5



- Insert a probe or paperclip gently into the eject pin hole to eject the optical drive tray.

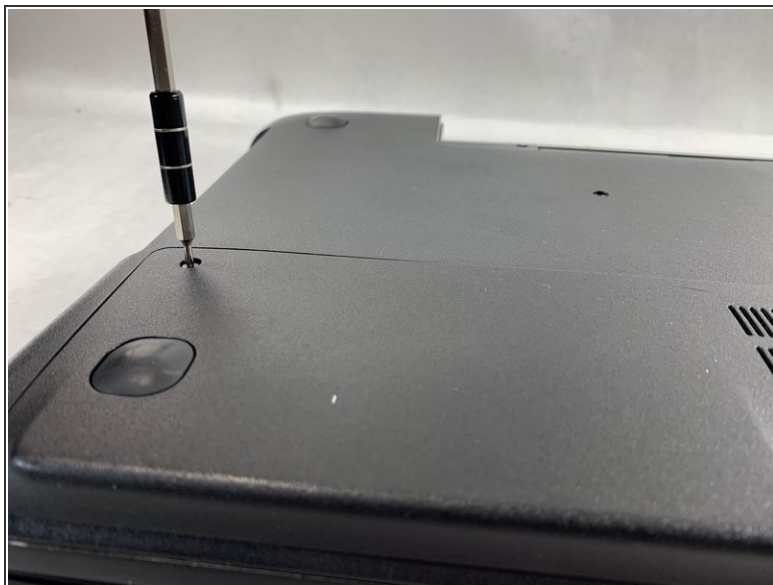
## Step 6



- Gently grasp the optical drive assembly and slide it out of the laptop body.

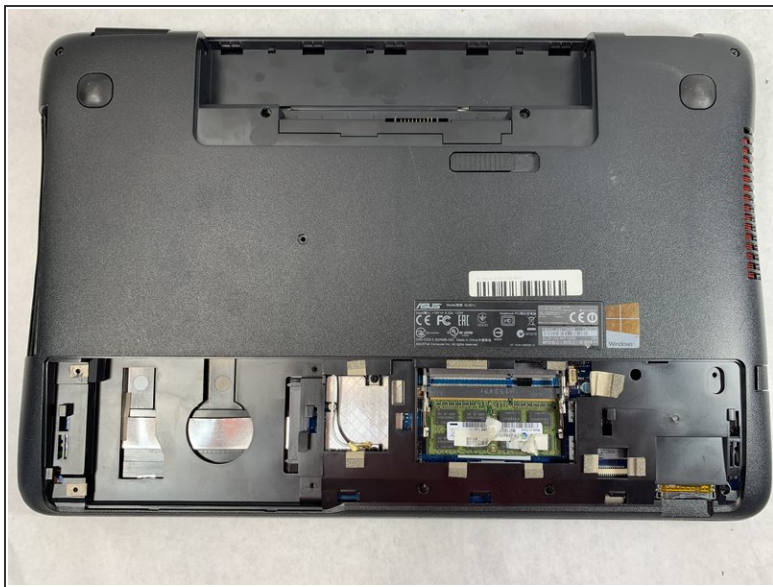


## Step 7 — Upper Assembly



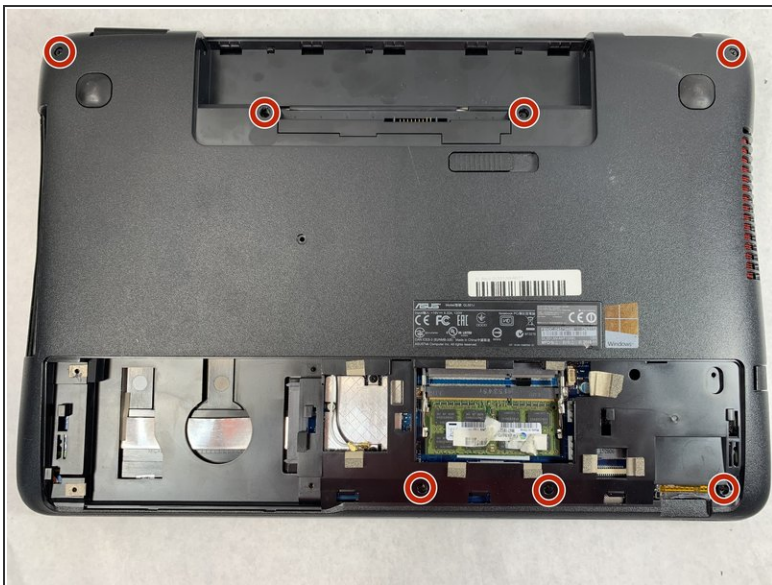
- Using a Phillips #000 screwdriver, remove the two 11mm screws that hold the access panel in place.

## Step 8



- Carefully remove the access panel.

## Step 9



- Using a Phillips #000 screwdriver, remove the seven 11mm screws holding lower case to the laptop.

## Step 10




- Turn the laptop over and open the screen.



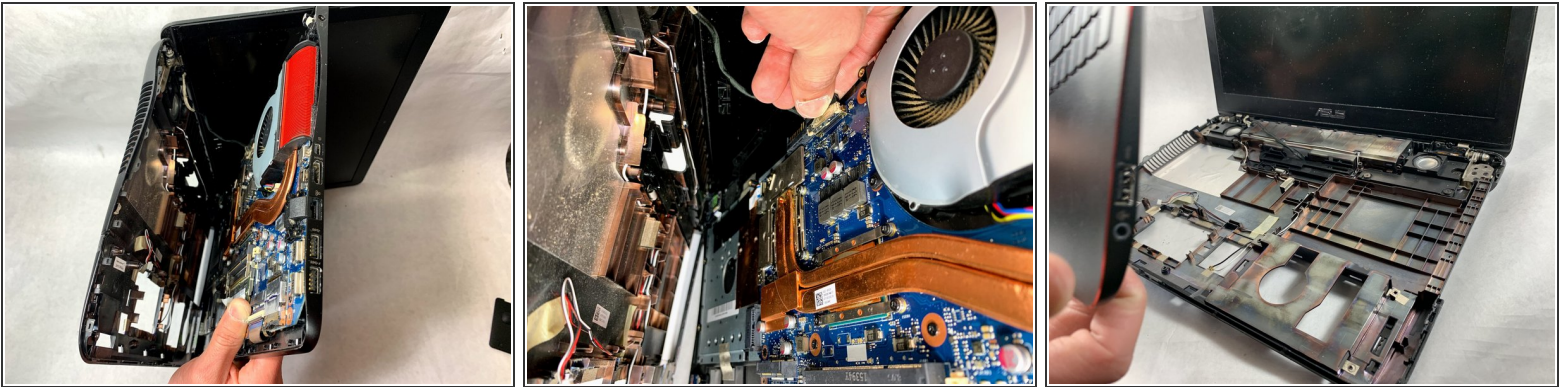
## Step 11



- Gently pry open the case with an iFixit opening tool.

 The upper and lower assembly are connected with a display cable that will be removed in the next step. Do not pull the parts apart more than a few inches.

## Step 12



- Flip the laptop on the right side while still holding the upper and lower assemblies close together.
- Unplug the display connector from the motherboard.
- Remove the upper assembly.

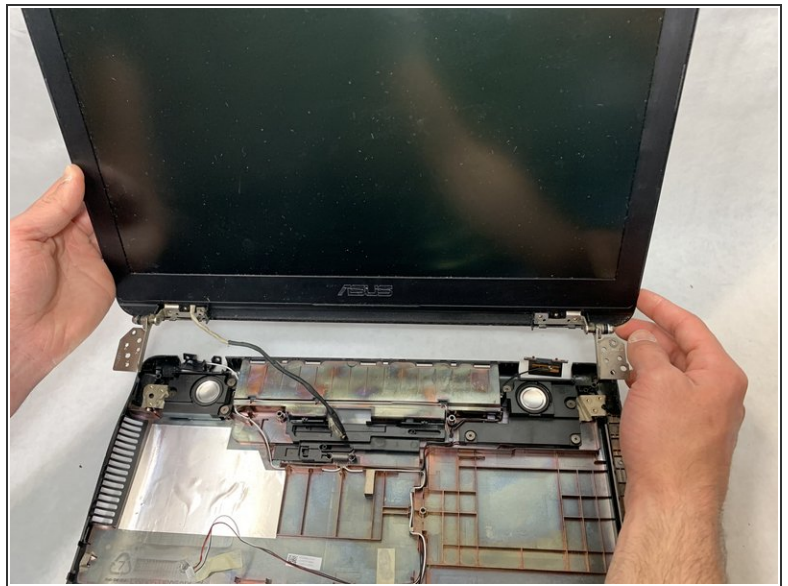


## Step 13 — Display Assembly



- Remove the three 5mm screws located in each circle with a Phillips #000 screwdriver.
- A total of twelve 5mm screw should be removed in order to free the display assembly from the base.

## Step 14



- Lift the display assembly up, separating it from the base of the device.

## Step 15



- Using a plastic opening tool, separate the bezel from the screen.
- Insert the tool and slide it right to left to release the bezel from the screen.

## Step 16



- Remove the four screws using a Phillips #0 screwdriver.



## Step 17



- Grab the screen in the corners and lift up to remove it.

To reassemble your device, follow these instructions in reverse order.