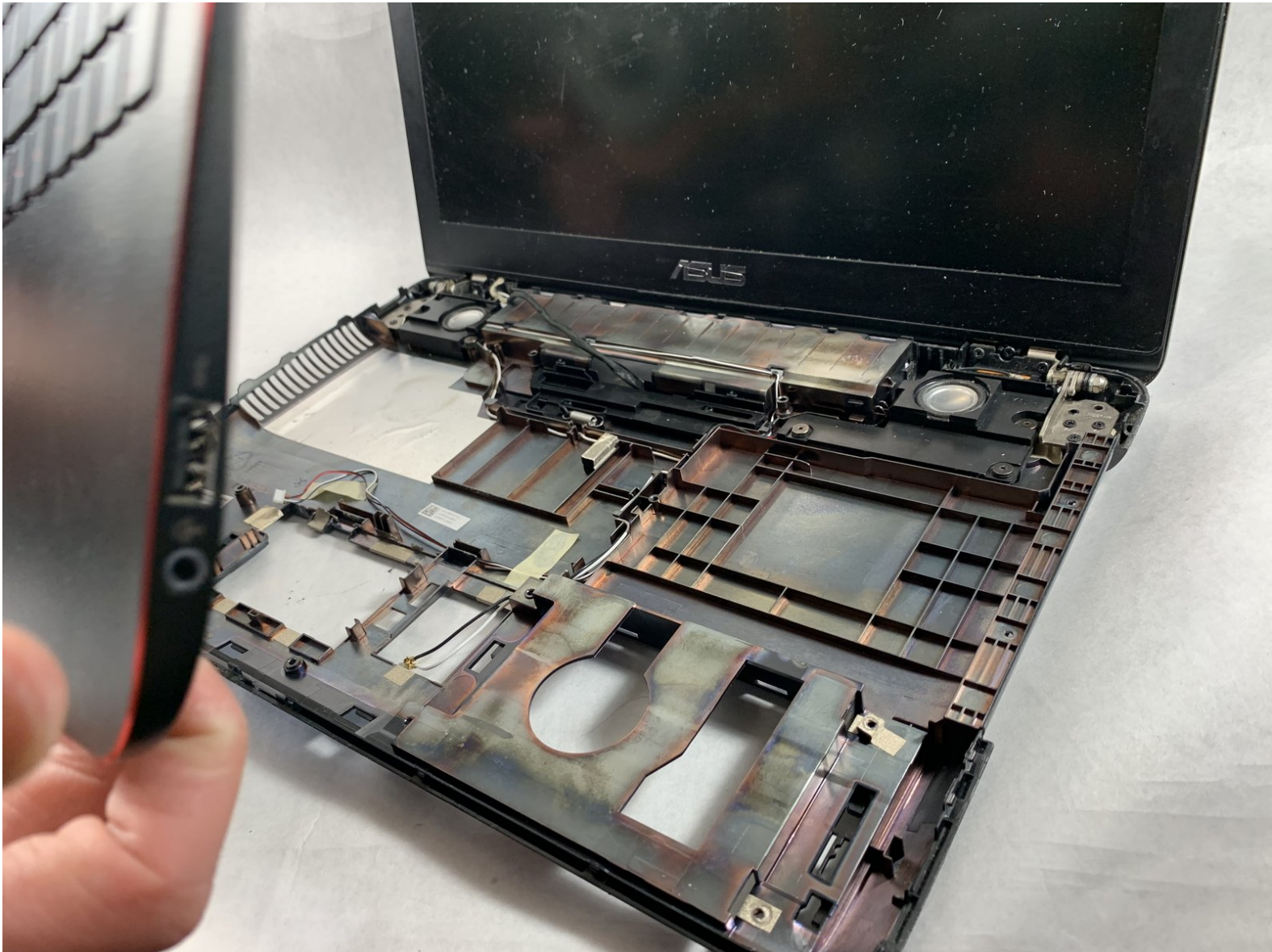




# Asus GL551JW-AH71 Upper Assembly Replacement

This guide outlines how to remove the upper assembly from the Asus GL551JW-AH71.

Written By: William Kelley



# INTRODUCTION

This guide outlines how to remove the upper assembly from the Asus GL551JW-AH71. This guide primarily serves as a prerequisite for guides that require the removal of the upper assembly to access the motherboard, fan and display cables.




## TOOLS:

- [Phillips #000 Screwdriver](#) (1)
  - [iFixit Opening Tools](#) (1)
-

## Step 1 — Battery



- Close the device and lay it upside down.

 Unplug the device and make sure the device is powered off before removing the battery.

## Step 2



- Move the battery eject button to the right. The battery will be ejected.



## Step 3



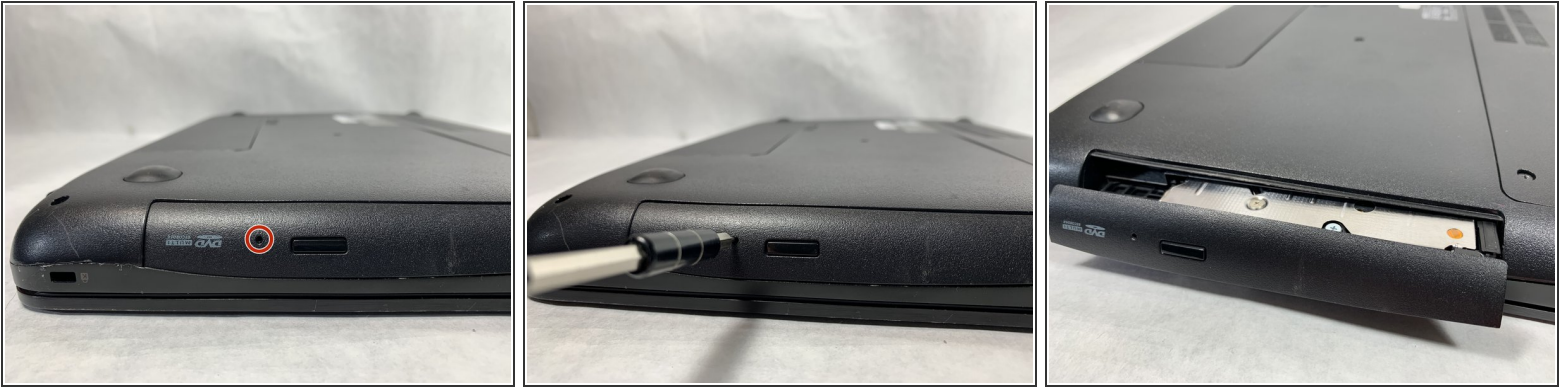
- Grab the battery and remove it from the device.

## Step 4 — Optical Drive



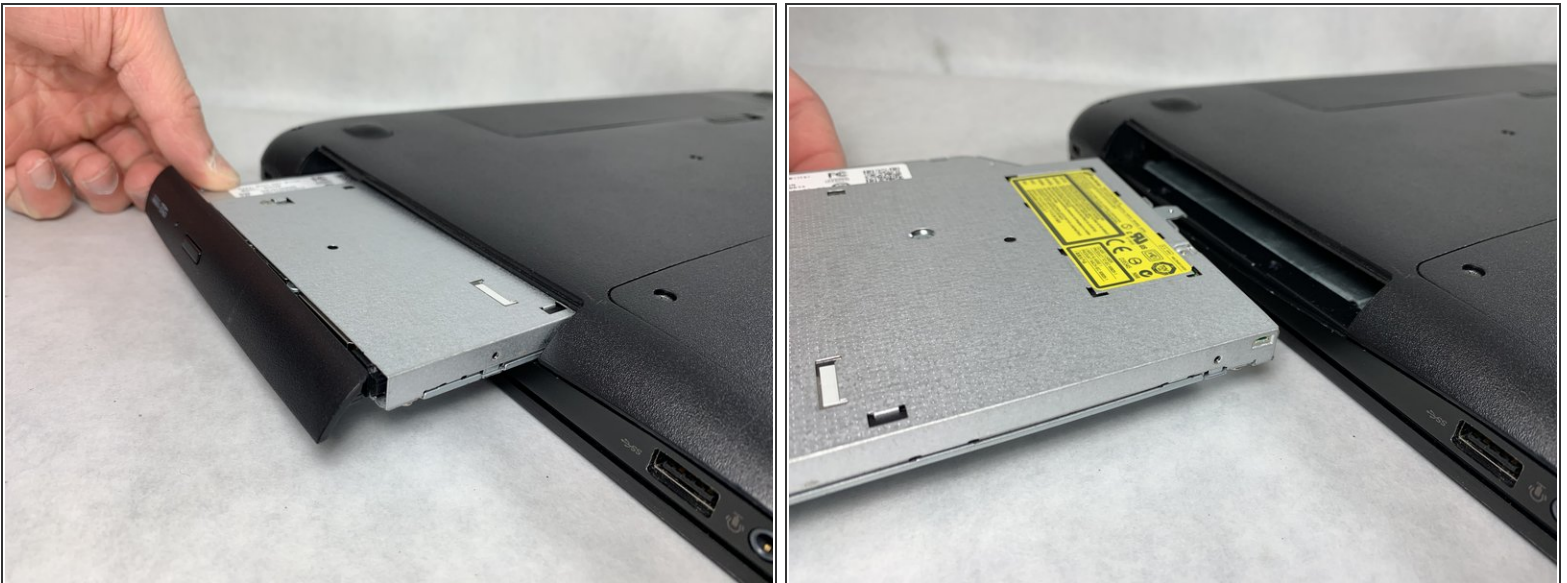
- Use a Phillips #000 screwdriver to remove the single 10mm optical drive screw.

## Step 5



- Insert a probe or paperclip gently into the eject pin hole to eject the optical drive tray.

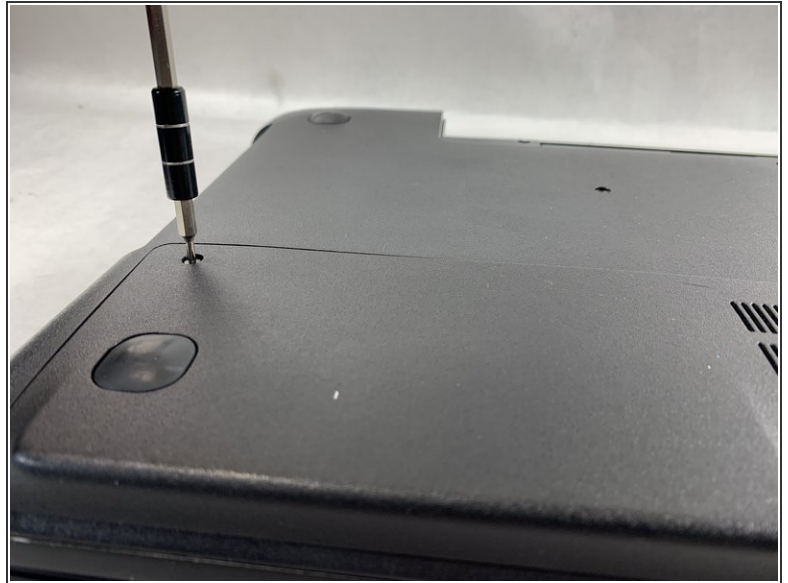
## Step 6



- Gently grasp the optical drive assembly and slide it out of the laptop body.



## Step 7 — Upper Assembly



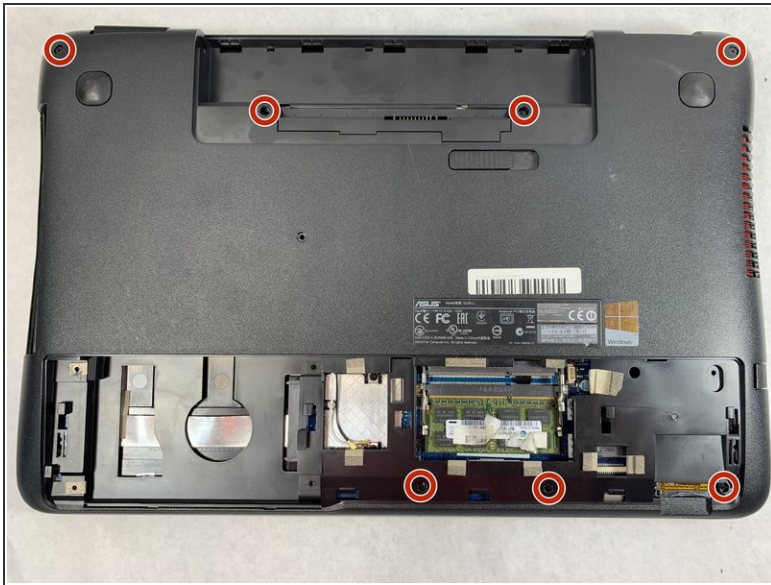
- Using a Phillips #000 screwdriver, remove the two 11mm screws that hold the access panel in place.

## Step 8



- Carefully remove the access panel.

## Step 9



- Using a Phillips #000 screwdriver, remove the seven 11mm screws holding lower case to the laptop.

## Step 10




- Turn the laptop over and open the screen.



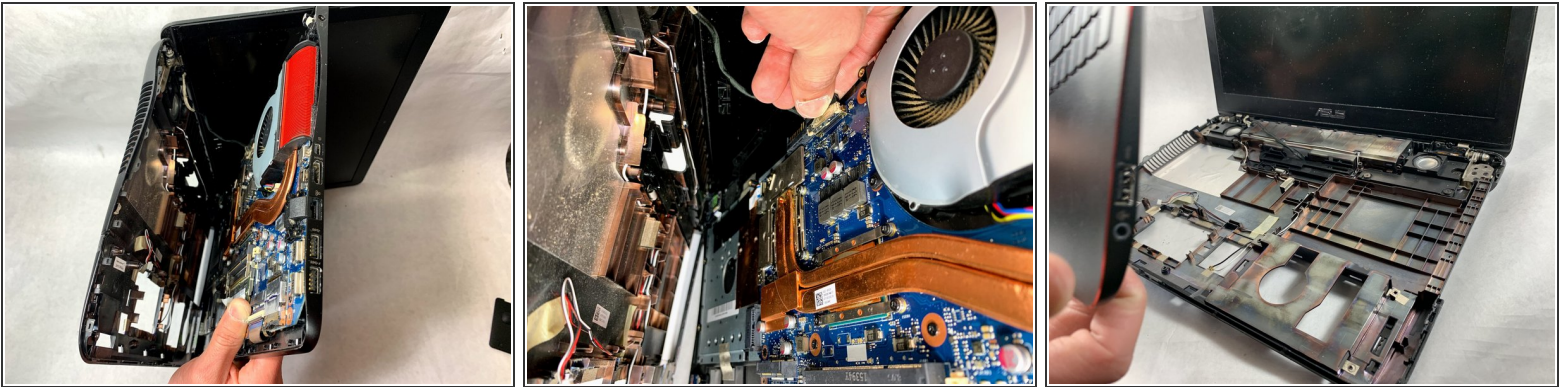
## Step 11



- Gently pry open the case with an iFixit opening tool.

 The upper and lower assembly are connected with a display cable that will be removed in the next step. Do not pull the parts apart more than a few inches.

## Step 12



- Flip the laptop on the right side while still holding the upper and lower assemblies close together.
- Unplug the display connector from the motherboard.
- Remove the upper assembly.

To reassemble your device, follow these instructions in reverse order.