



Asus GL551JW-AH71 Wi-Fi Card Replacement

This guide will provide a quick and easy step on replacing your Wi-Fi card.

Written By: William Kelley



INTRODUCTION

This guide will provide a quick and easy procedure for replacing your Wi-Fi card. This particular guide could also be referred as a prerequisite for other guides on RAM, motherboard and fan.


TOOLS:

- [Phillips #000 Screwdriver](#) (1)
-

Step 1 — Battery



- Close the device and lay it upside down.

 Unplug the device and make sure the device is powered off before removing the battery.

Step 2



- Move the battery eject button to the right. The battery will be ejected.

Step 3



- Grab the battery and remove it from the device.

Step 4 — Wi-Fi Card



- Using a Phillips #000 screwdriver, remove the two 16mm screws securing the access panel to the laptop.

Step 5



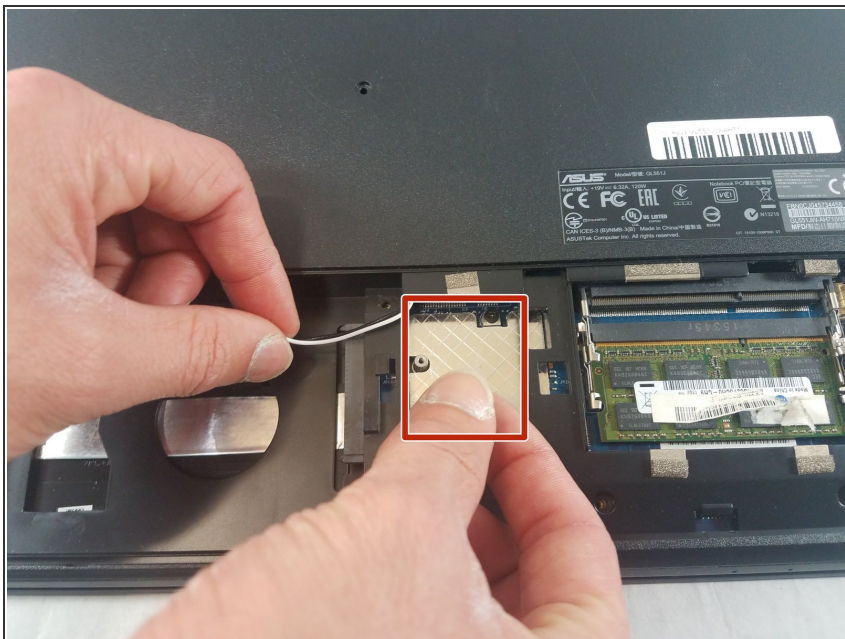
- Gently remove the cover once the screws are removed.

Step 6



- Locate the Wi-Fi card and detach both coaxial cables that are connected to the card.
- ⓘ The pictures in this step do not show a Wi-Fi card. The location where the Wi-Fi card would be located is indicated by the red rectangle.

Step 7



- Grasp the Wi-Fi card gently and remove it carefully.
- ⓘ The pictures in this step do not show a Wi-Fi card, since it is missing from this particular device.

To reassemble your device, follow these instructions in reverse order.