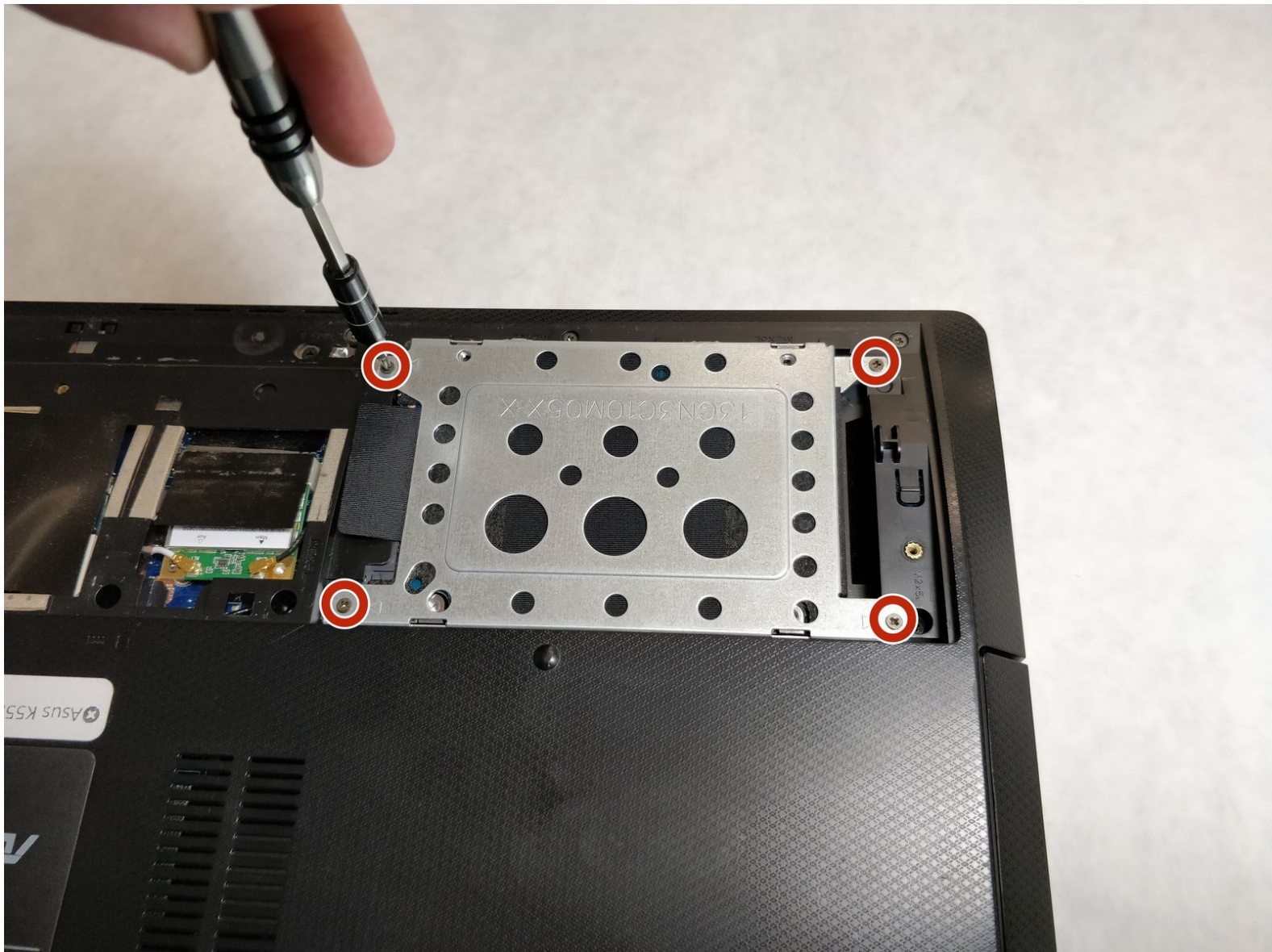




Asus K55N-DS81 Hard Drive Replacement

This guide demonstrates how to find and replace the stock hard drive from the Asus K55N-DS81.

Written By: Elliott Beckner



INTRODUCTION

If your hard drive is making a loud clicking noise, has failed, or is slowing down your laptop, it may need replaced. This guide will show you how to quickly remove and disassemble the hard drive from the laptop such that a new one can be installed.



TOOLS:

- [JIS #00 Screwdriver](#) (1)
-

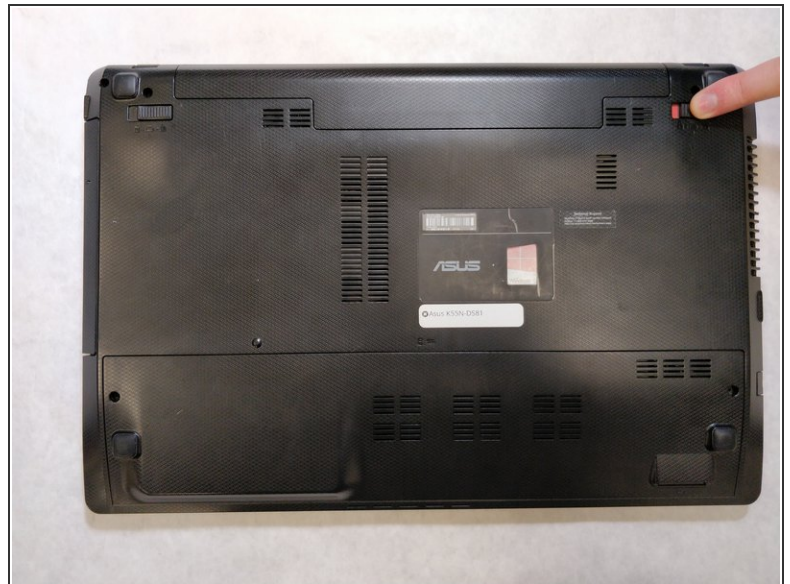
Step 1 — Battery



- Flip the laptop over, such that the bottom of the laptop is facing upwards.

⚠ Ensure that the laptop is powered off prior to following this guide.

Step 2



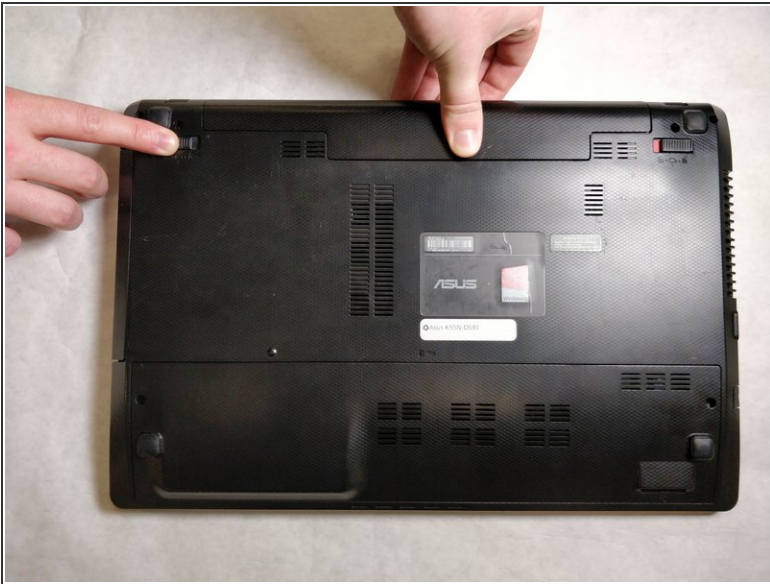
- Pull the latch to the right of the battery to the right.

Step 3



- Pull the latch to the left of the battery to the left. Hold the latch open with a finger to prevent it from closing.

Step 4



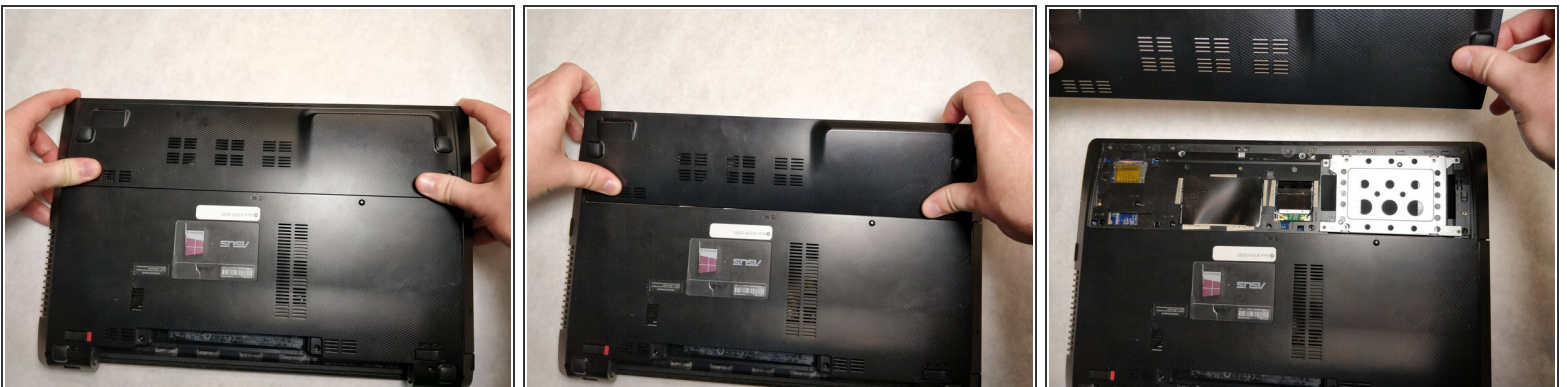
- While holding the second latch from the previous step, use another hand to reach underneath the battery.
- Pull the battery upwards and away from the laptop to remove it.

Step 5 — Rear Panel



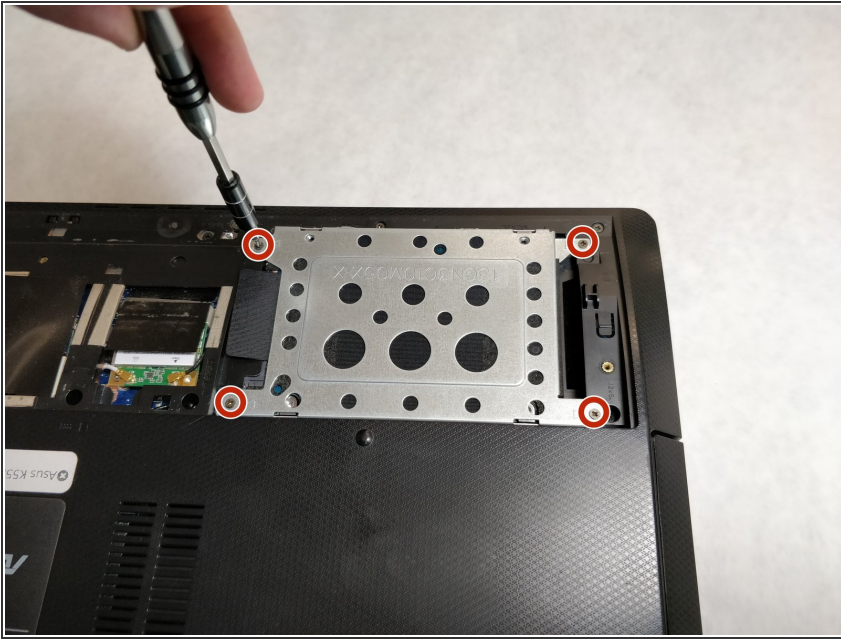
- Using a JIS #00 screwdriver, unscrew the two 5 mm screws on either side of the laptop panel.

Step 6



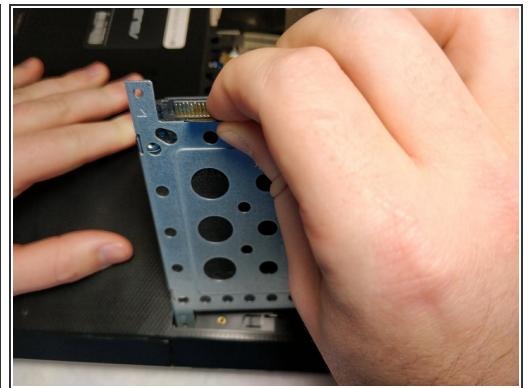
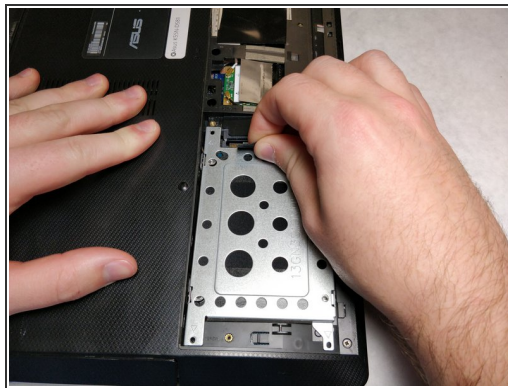
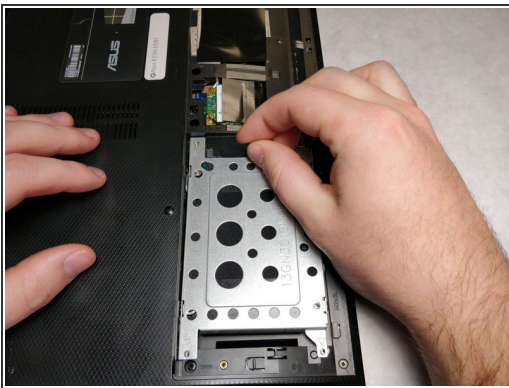
- Remove the panel by pushing away from the laptop until the panel is free of the laptop.
- Lift to remove the panel.

Step 7 — Hard Drive



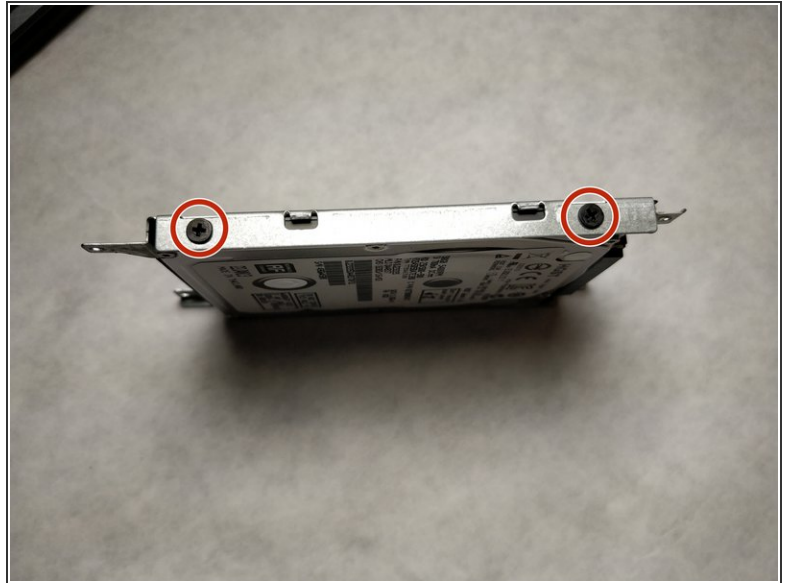
- Using a JIS #00 screwdriver, unscrew the four 5 mm screws fastening the hard drive enclosure to the laptop.

Step 8



- Grab the plastic tab located on the hard drive enclosure.
- Pull the tab towards yourself, the hard drive will slide towards you as it disconnects from the motherboard.
- Lift the enclosure by the tab to remove the enclosure from the laptop.

Step 9



- Using a JIS #00 screwdriver, unscrew the four 3 mm screws securing the hard drive to the enclosure.
- ⓘ Do not forget to flip the enclosure over and unscrew the screws on the other side.

Step 10



- Grab the hard drive and pull it away from the enclosure to remove it.

To reassemble your device, follow these instructions in reverse order.