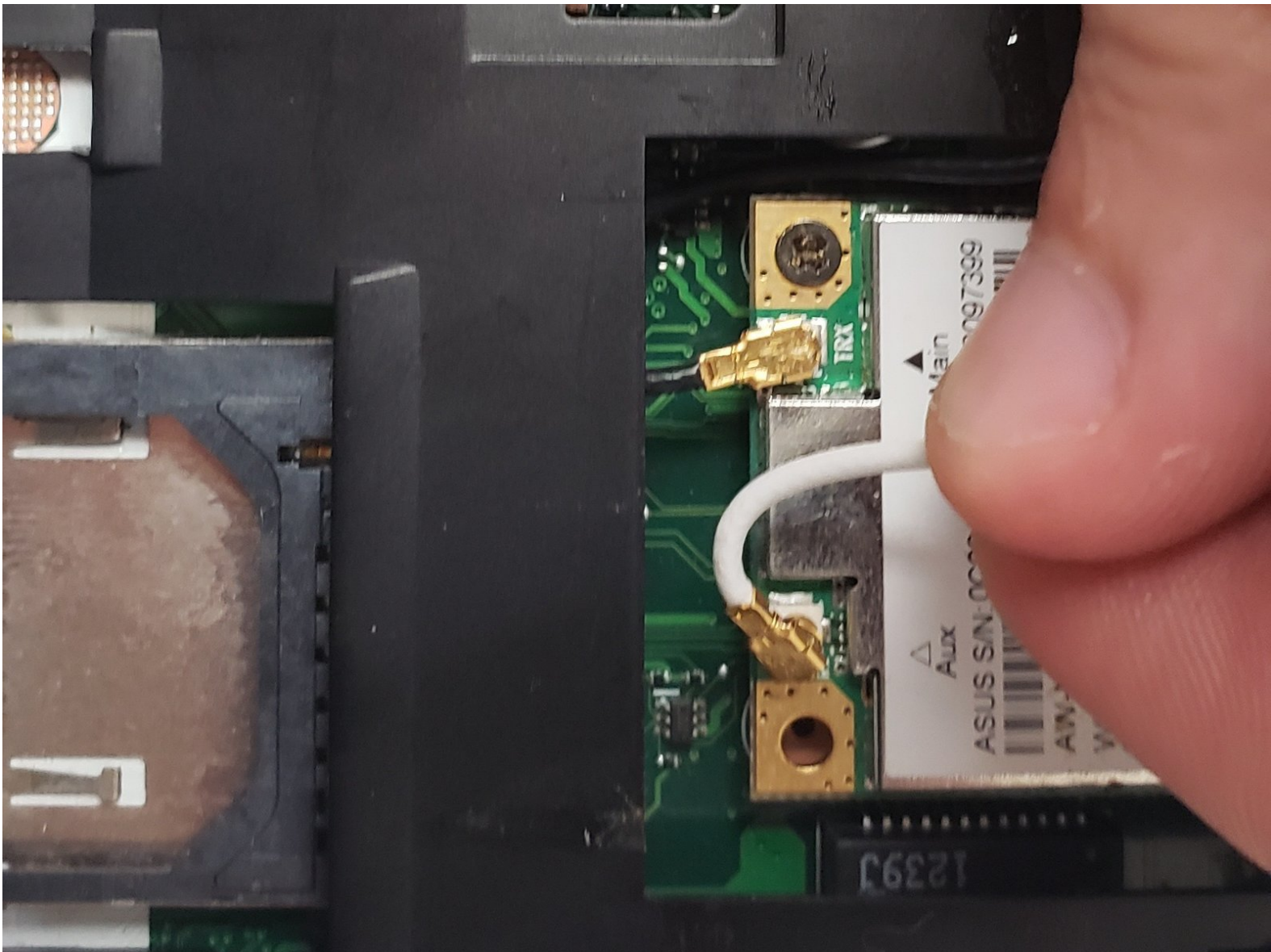




Asus K55a-si50301p Wifi Card Replacement

Replace your wireless card to restore wifi capabilities to the Asus K55a-si50301p.

Written By: Zack Cannon





TOOLS:

- [Phillips #0 Screwdriver](#) (1)
- [iFixit Opening Tools](#) (1)
- [Phillips #1 Screwdriver](#) (1)

Step 1 — Battery



- Press and slide the two battery retention clips on either side of the battery towards the unlock position.

Step 2



- Pull the right side retention clip so that the red indicator is showing.
- ⓘ The small graphic below the retention clip denotes locked and unlocked positions. The clip will stay put once moved into position.

Step 3



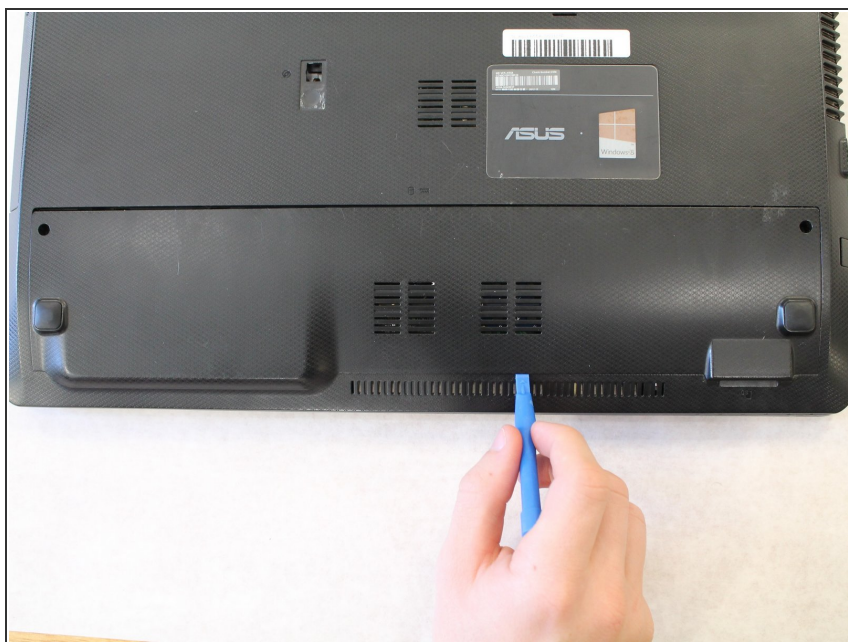
- Pull the retention clip on the left hand side of the laptop away from the battery.
- Gently pull the battery out with your free hand.

Step 4 — Lower Back Panel



- Remove the two 8.5mm screws using a PH0 screwdriver.

Step 5



- Using the iFixit opening tool, gently pry the plastic cover away from its original position.

Step 6



- Gently pull up and then towards you until the plastic cover is free.

A close-up photograph showing the internal antenna connection on a laptop's green printed circuit board (PCB). A white coaxial cable is being inserted into a gold-plated SMA connector labeled "TX". Another similar connector labeled "RX" is visible nearby. The PCB also features various other components like capacitors and a small circular component. A person's finger is visible holding the cable. In the background, a black plastic housing and a brownish metal shield are partially visible.

- Remove the white and black wires from the card.
- This does not require much force. Simply squeeze on the sides of the connector and allow the end to pop off.

- Remove the two 9mm Phillips #1 screws from the wifi card.

Step 9



- After unscrewing lift gently to remove.

To reassemble your device, follow these instructions in reverse order.