



Asus M51E-B2 Swivel Camera Replacement

This guide shows you how to properly fix your laptop's swivel camera.

Written By: Juston Brown



INTRODUCTION

This guide shows you how to properly fix your laptop's swivel camera. This is an easy fix in order to get your camera to function properly. In order to accomplish this, you will need a dual-tipped metal spudger and a Phillips PH0 head screwdriver.



TOOLS:

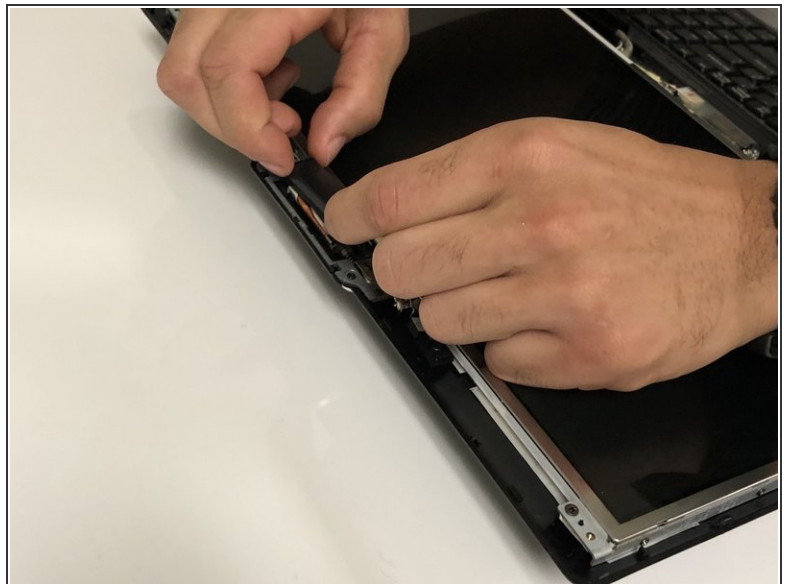
- [Metal Spudger](#) (1)
 - [Phillips #0 Screwdriver](#) (1)
-

Step 1 — Swivel Camera



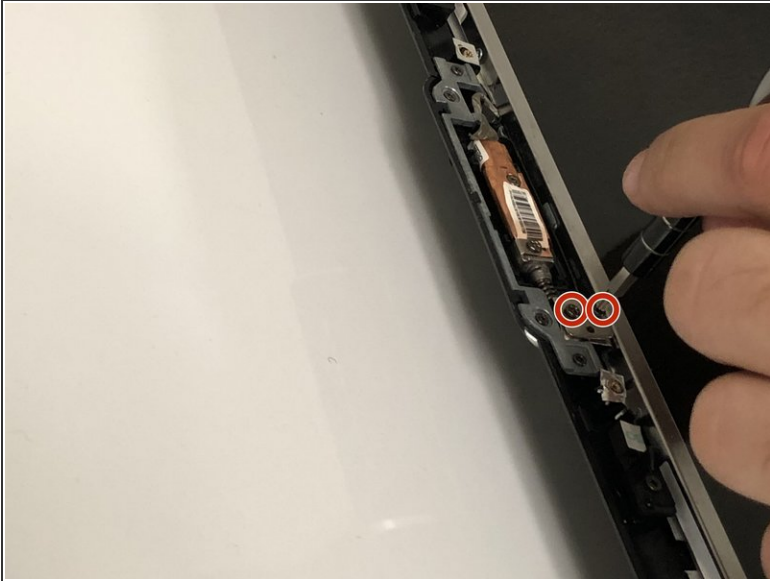
- Open the laptop.
- Press and hold the power button until the laptop powers off.

Step 2



- Use a metal spudger prying tool to remove the outer screen cover of the laptop.
- ⓘ Gently work your way clockwise around the outer part of the screen.

Step 3



- Use the Phillips PH0 head screwdriver to remove the two 2.5 mm screws located on the left side of the camera.
- Use the Phillips PH0 head screwdriver to remove the one 2.5 millimeter screw that goes through the left side of the camera.

Step 4



- Find the wiring harness on the right side of the camera.
- Using your fingers, gently remove the wiring harness connected to the right side of the camera.

To reassemble your device, follow these instructions in reverse order.