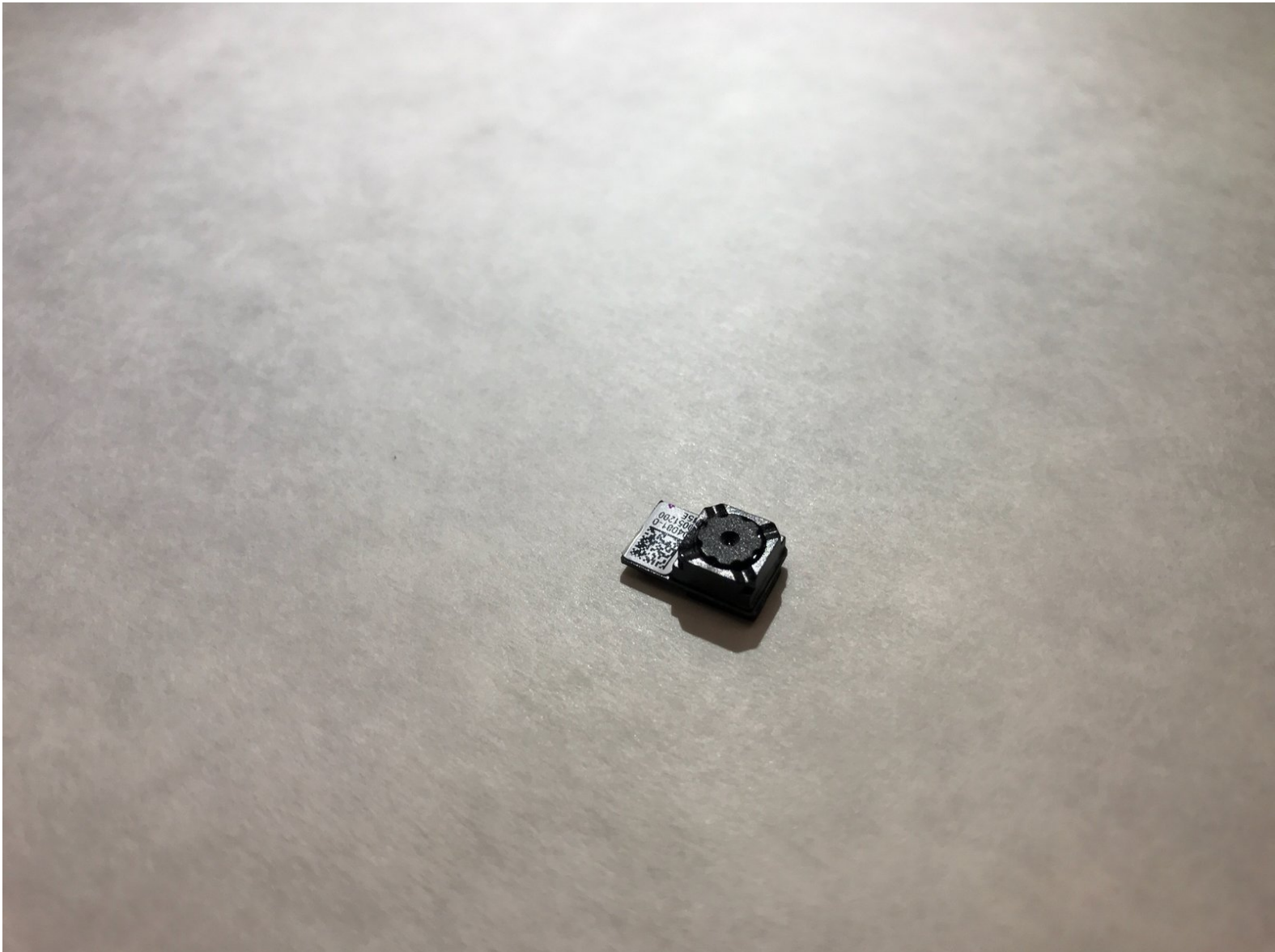




Asus MeMO Pad 7 ME170C Front Facing Camera Replacement

This guide will walk you through how to replace the front face camera.

Written By: Thomas Brooks



INTRODUCTION

The front facing camera is used to take photos from the tablets front orientation. The camera may stop taking photos and videos clearly. This can be replace fairly easily, but the motherboard needs to be removed first.



TOOLS:

- [Jimmy](#) (1)
 - [Tweezers](#) (1)
 - [Metal Spudger](#) (1)
 - [iFixit Opening Tools](#) (1)
 - [Phillips #000 Screwdriver](#) (1)
-

Step 1 — Motherboard



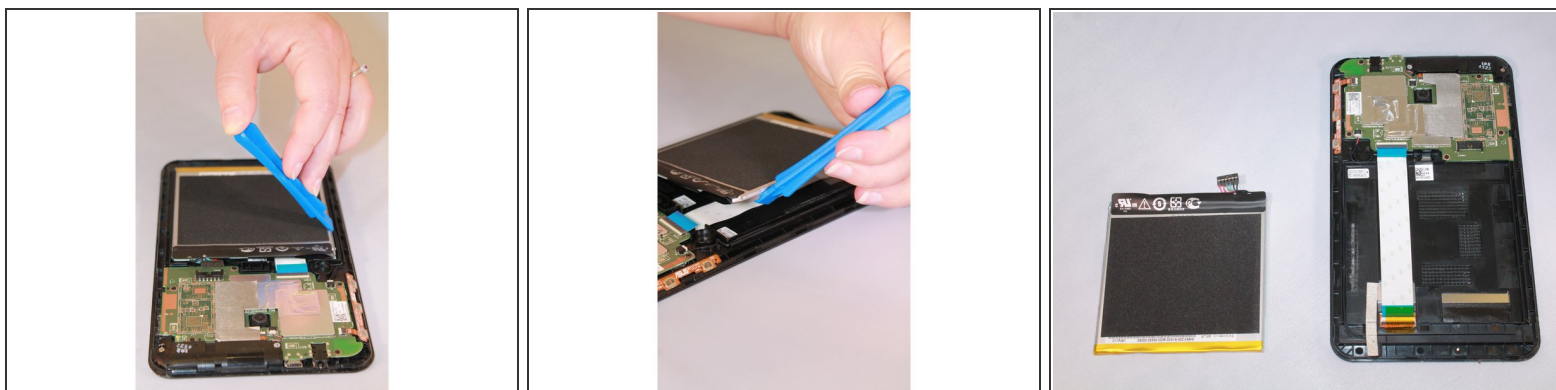
- ⚠ Power off the device before disassembly.
- ⚠ Be gentle; excessive force can result in a damaged or cracked screen.
 - Gently pry a Jimmy all around the seam of the device until the back panel detaches.

Step 2



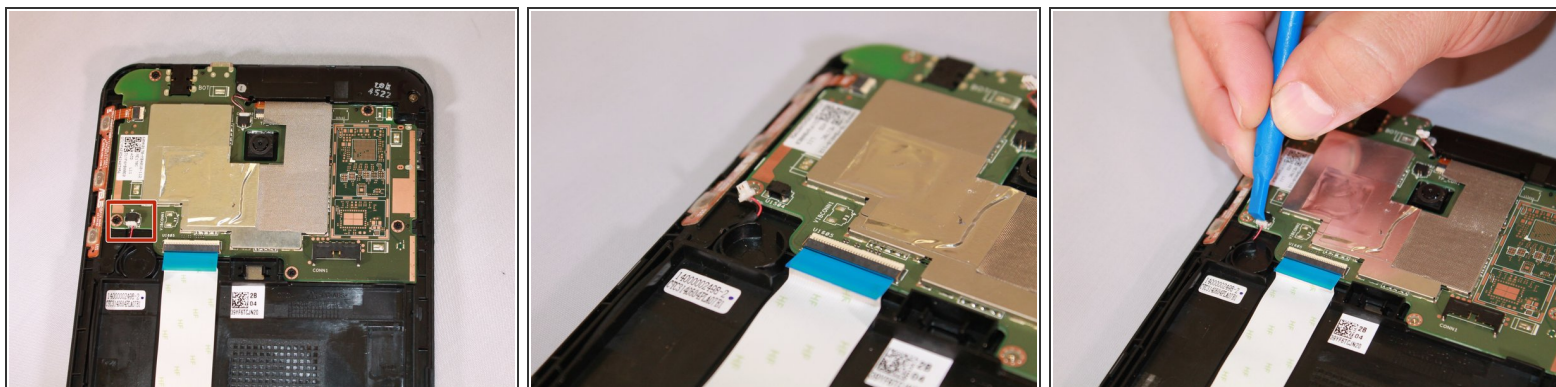
- Use an iFixit opening tool to gently push the black bundle cable connector in a forward motion until it loosens without pushing down on the bundle cable connector.

Step 3



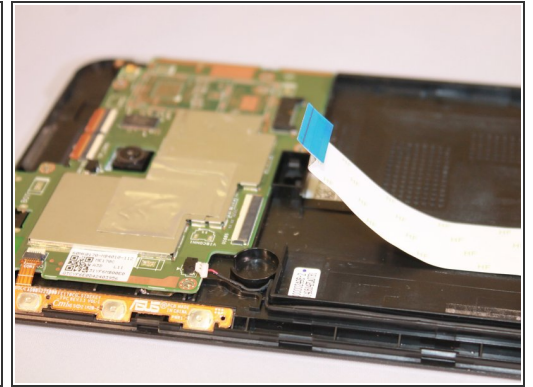
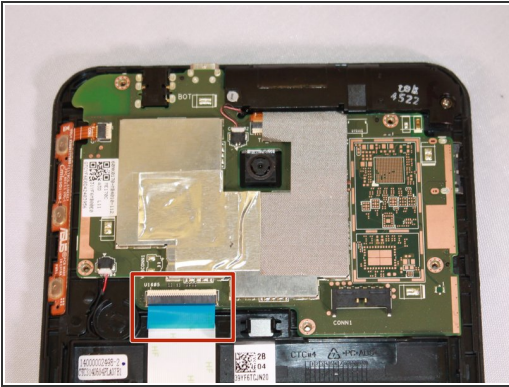
- Use the plastic opening tool to pry around the edges of the battery.
- ⓘ The battery should be laying freely in its port.
- Lift the battery out of its port.

Step 4



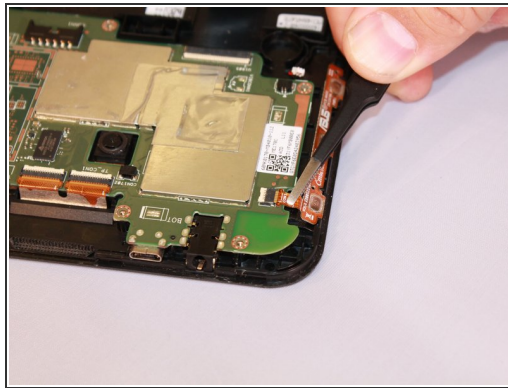
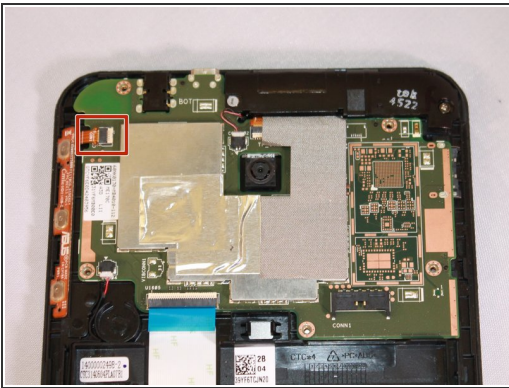
- Use a plastic opening tool to slide the white cable connector completely out of the port.

Step 5



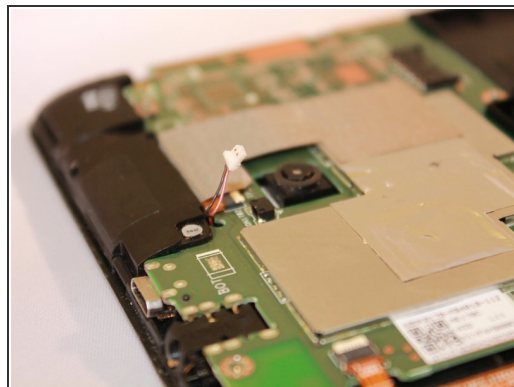
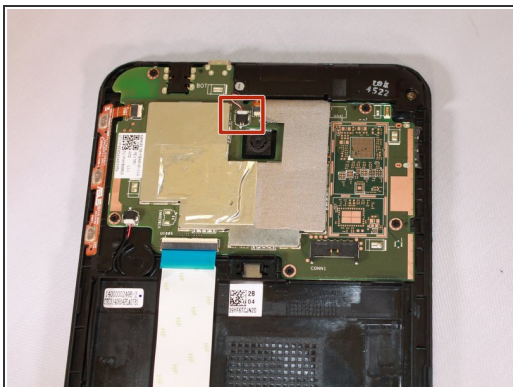
- Flip up the beige clip to loosen the cable.
- Use the wide nosed tweezers to pinch the blue tab attached to the ribbon cable.
- Pull the blue tab gently in a lateral motion until it is completely out of its port.

Step 6



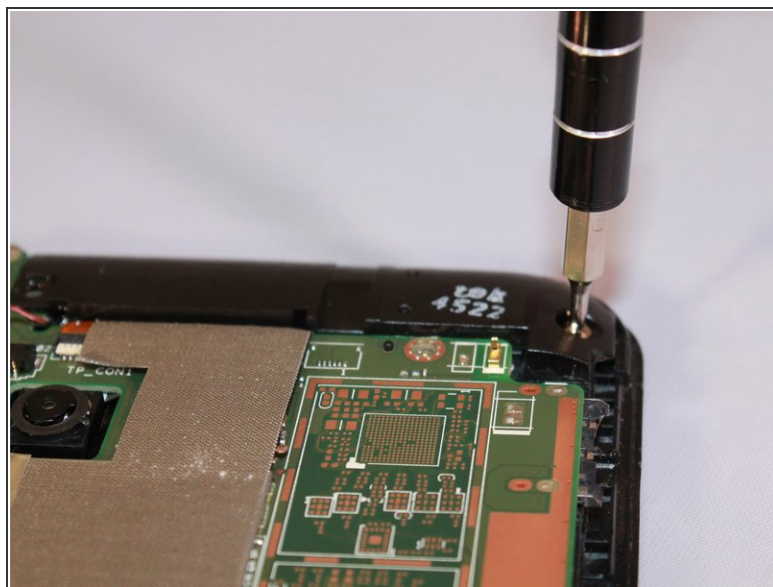
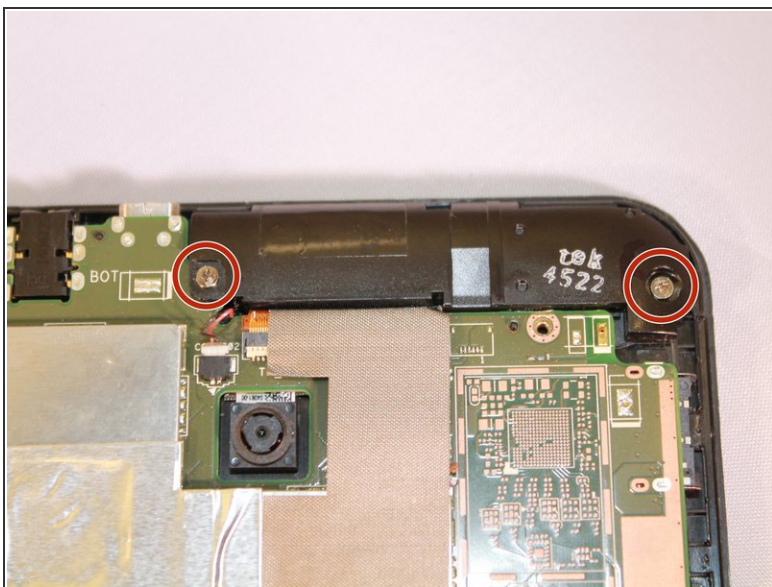
- Use the wide nosed tweezers to gently pull out the orange ribbon inserted in the port on the motherboard.

Step 7



- Use a plastic opening tool to push the white cable connector out of its port in a side to side motion.

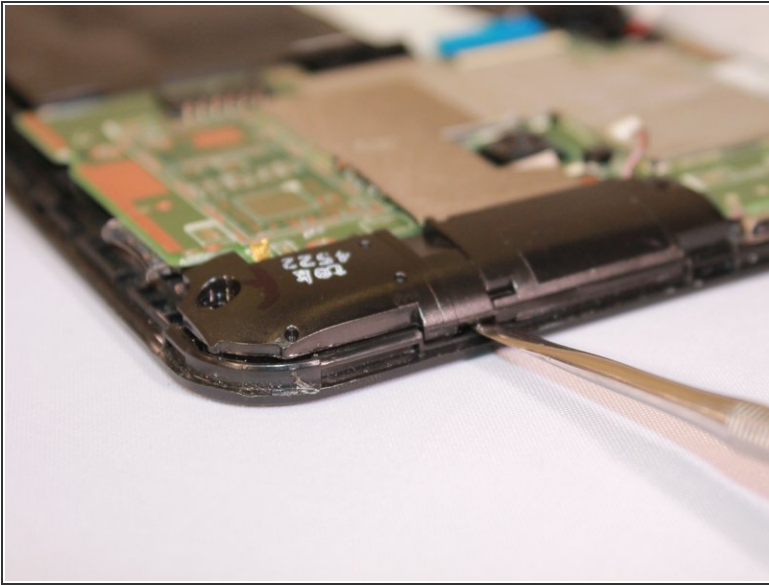
Step 8



- Use the Phillips #000 screwdriver to unscrew the seven screws.

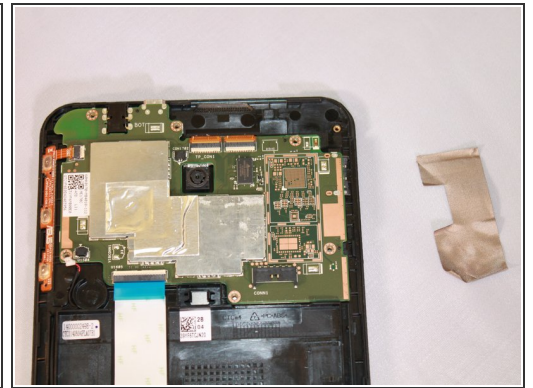
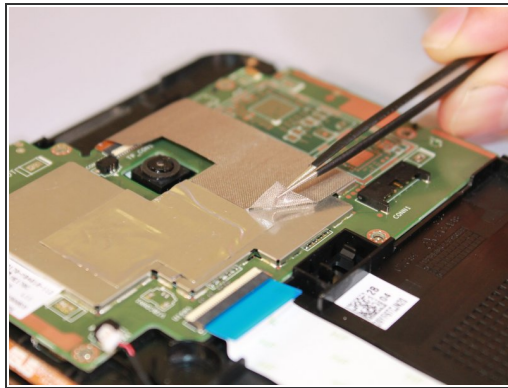
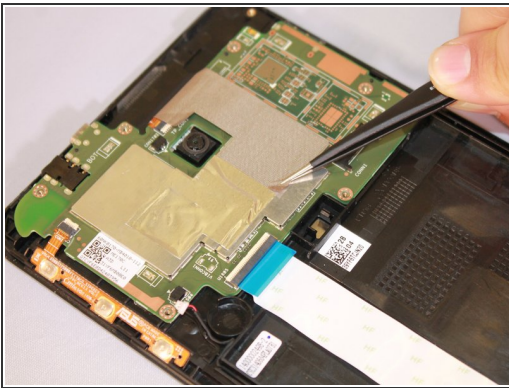
i There should be two silver and five black screws.

Step 9



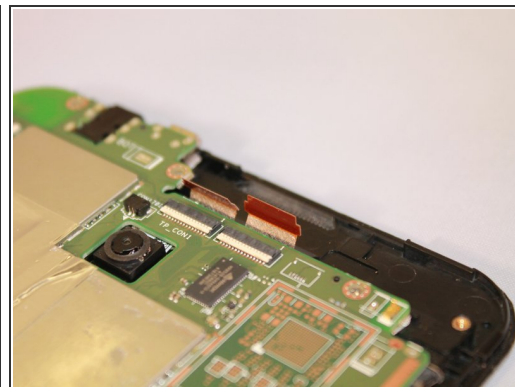
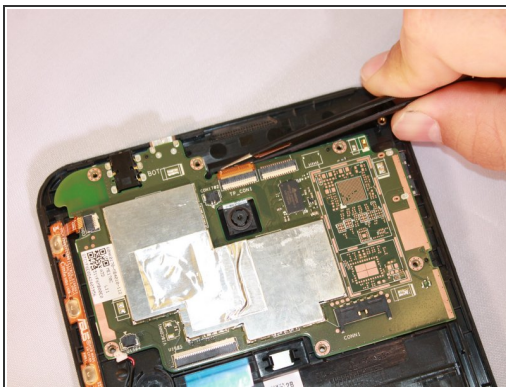
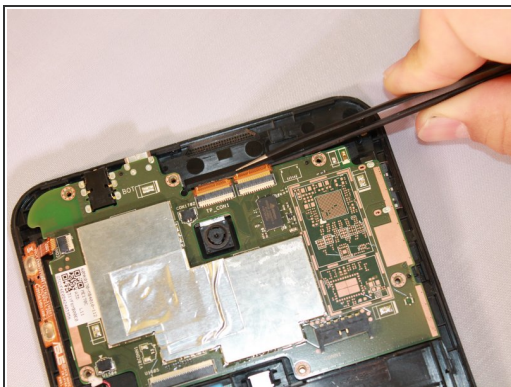
- ⓘ Once the screws are removed, the speaker component will be loosely laying in the track.
- Use the metal spudger tool to remove the speaker by gently lifting the edge of it.

Step 10



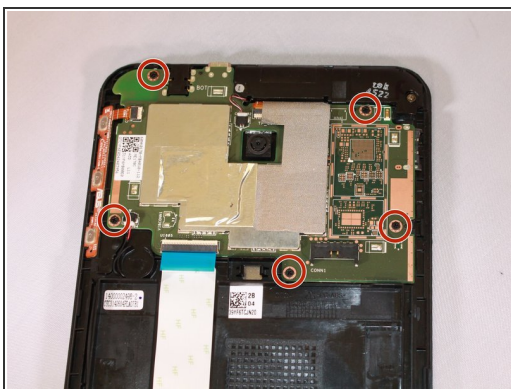
- Remove the silver tape on one corner with the needle nosed tweezers, and remove the tape from the motherboard.

Step 11



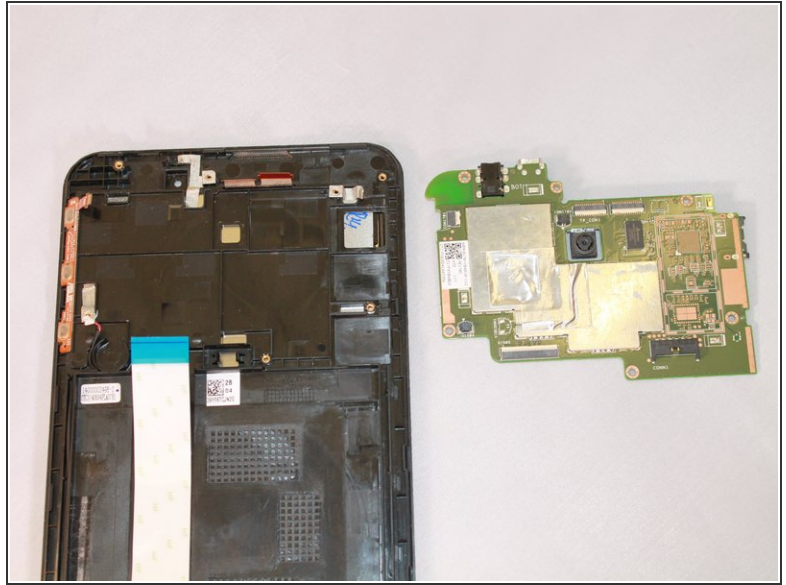
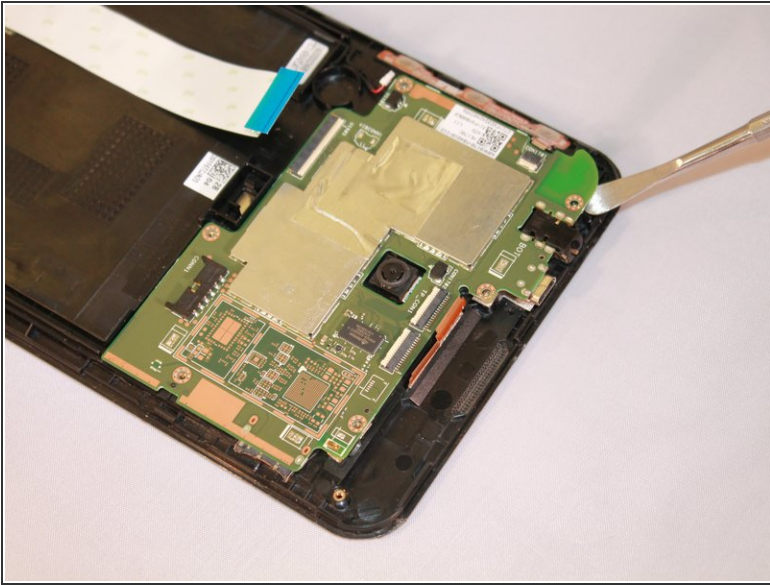
- Use the needle nosed tweezers to gently pull both of the orange ribbon cables out of their ports.

Step 12



- Use the Phillips #000 screwdriver to unscrew all five screws.

Step 13



- To uninstall the motherboard, use the metal spudger tool to lift it out of the device.

Step 14 — Front Facing Camera



- Gently wedge plastic prying tool underneath top edge of camera.
- ⚠ Try not to bend or scratch anything on the motherboard when handling.
- Pry camera upward away from motherboard.
- Camera should pop off easily.

To reassemble your device, follow these instructions in reverse order.