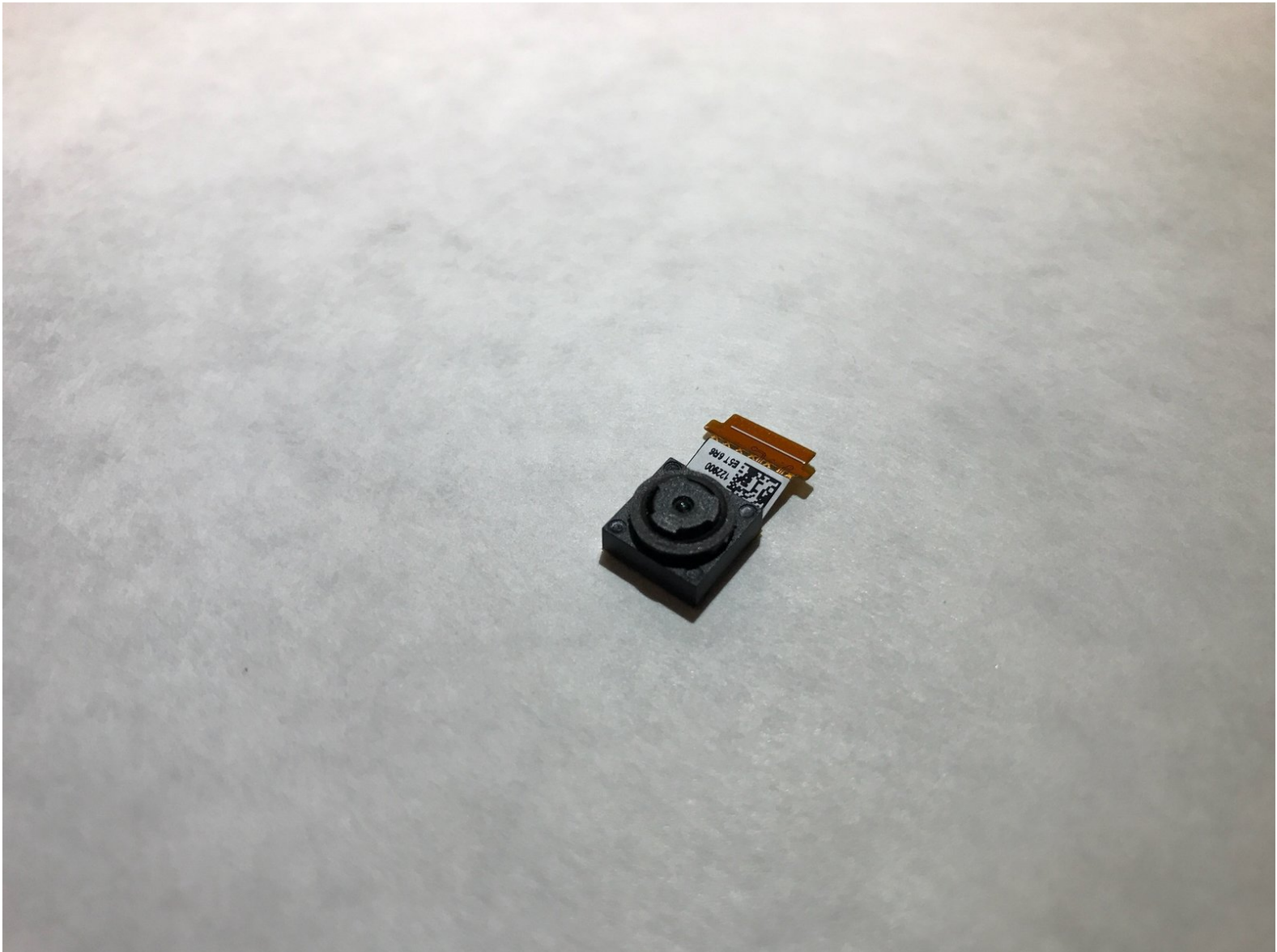




# Asus MeMO Pad 7 ME170C Rear Facing Camera Replacement

This guide will walk you through how to replace the rear facing camera.

Written By: Thomas Brooks



---

## INTRODUCTION

The rear facing camera is used to take photos from the tablets rear orientation. The camera may stop taking photos and videos clearly. This can be replace fairly easily, but the motherboard needs to be removed first.



### TOOLS:

- [Jimmy](#) (1)
  - [Tweezers](#) (1)
  - [Metal Spudger](#) (1)
  - [iFixit Opening Tools](#) (1)
  - [Phillips #000 Screwdriver](#) (1)
-

## Step 1 — Motherboard



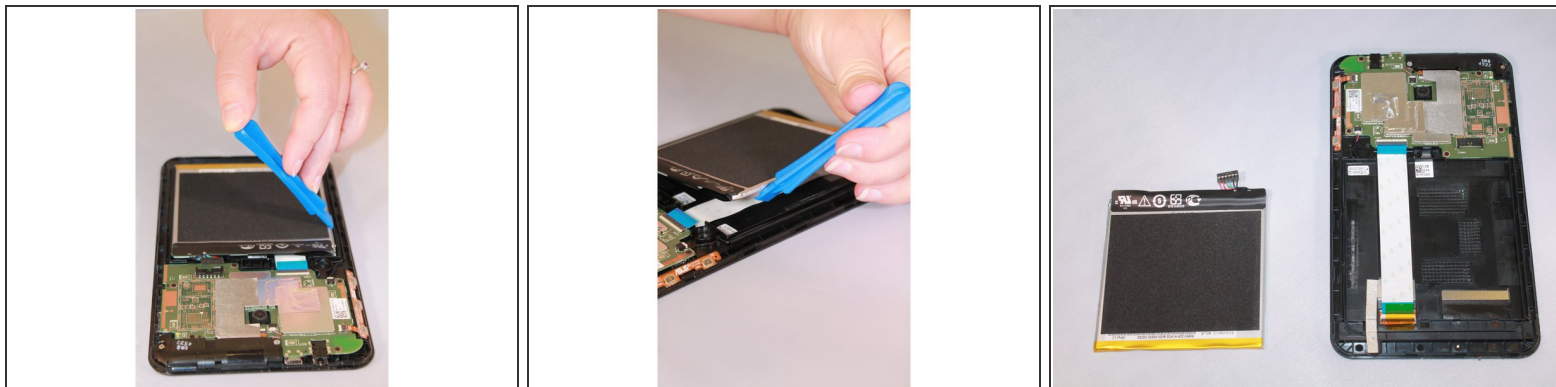
- ⚠ Power off the device before disassembly.
- ⚠ Be gentle; excessive force can result in a damaged or cracked screen.
  - Gently pry a Jimmy all around the seam of the device until the back panel detaches.

## Step 2



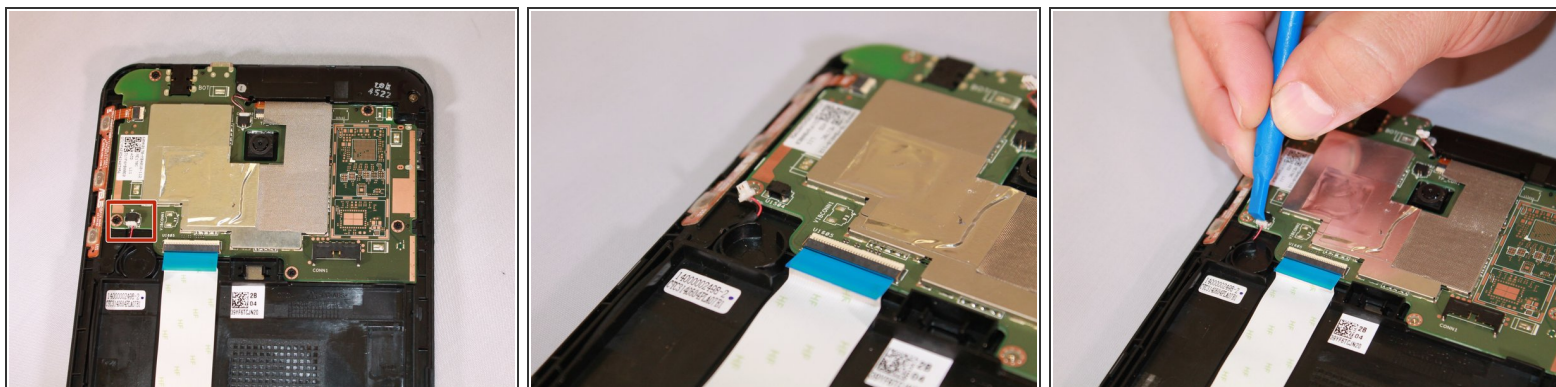
- Use an iFixit opening tool to gently push the black bundle cable connector in a forward motion until it loosens without pushing down on the bundle cable connector.

## Step 3



- Use the plastic opening tool to pry around the edges of the battery.
- i** The battery should be laying freely in its port.
- Lift the battery out of its port.

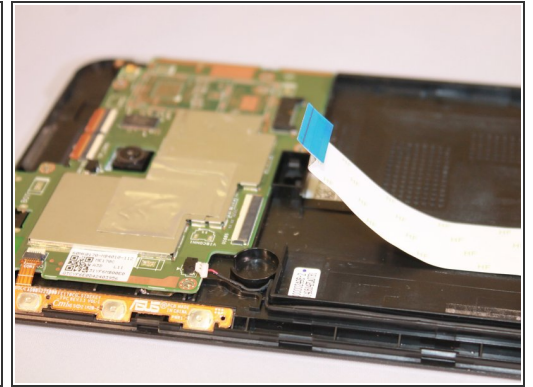
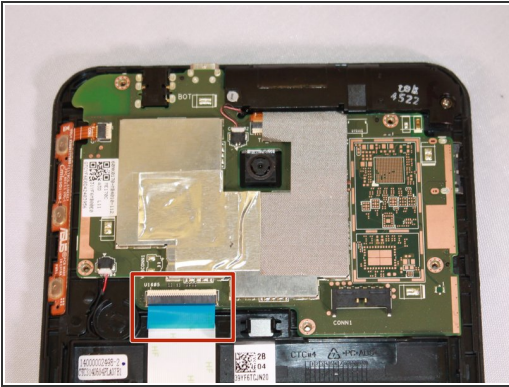
## Step 4



- Use a plastic opening tool to slide the white cable connector completely out of the port.

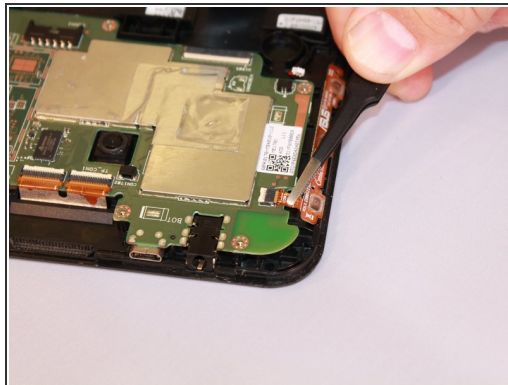
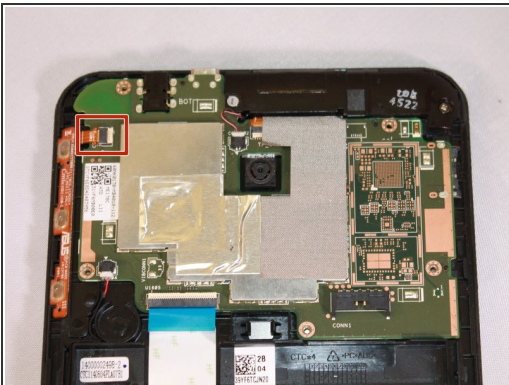


## Step 5



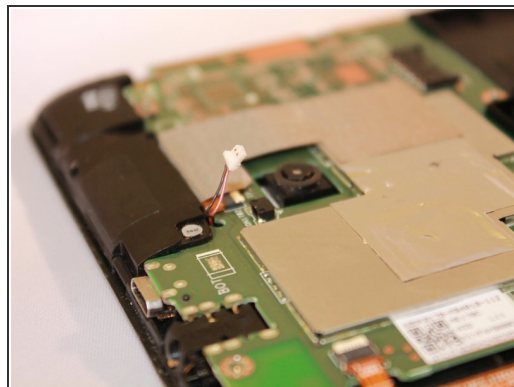
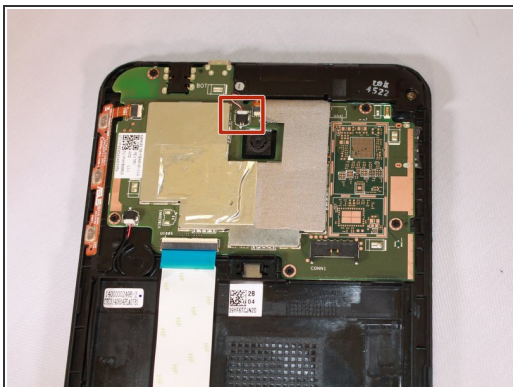
- Flip up the beige clip to loosen the cable.
- Use the wide nosed tweezers to pinch the blue tab attached to the ribbon cable.
- Pull the blue tab gently in a lateral motion until it is completely out of its port.

## Step 6



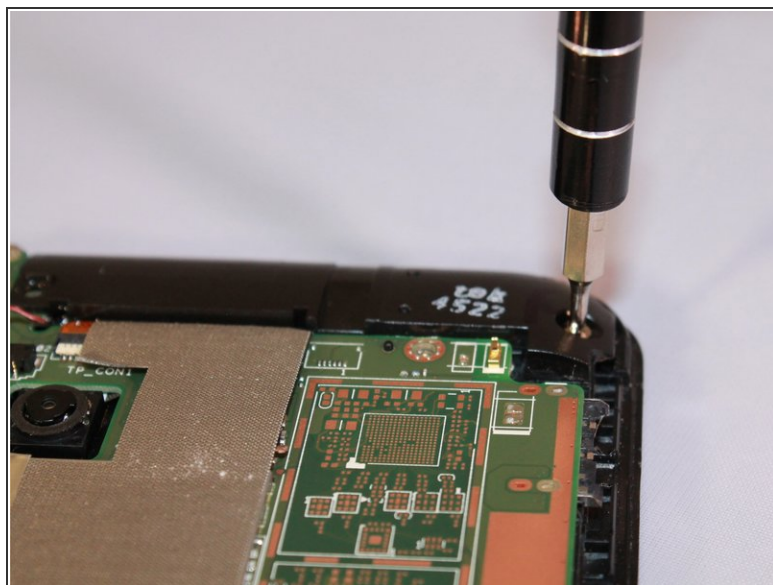
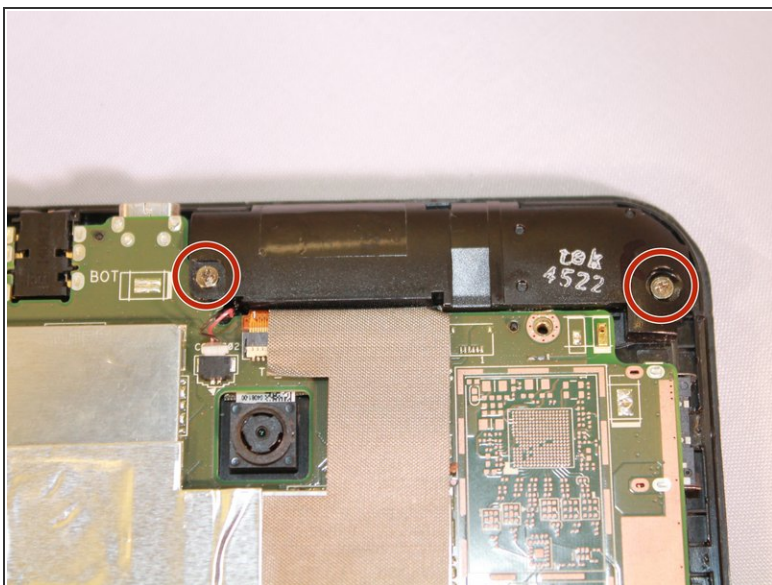
- Use the wide nosed tweezers to gently pull out the orange ribbon inserted in the port on the motherboard.

## Step 7



- Use a plastic opening tool to push the white cable connector out of its port in a side to side motion.

## Step 8

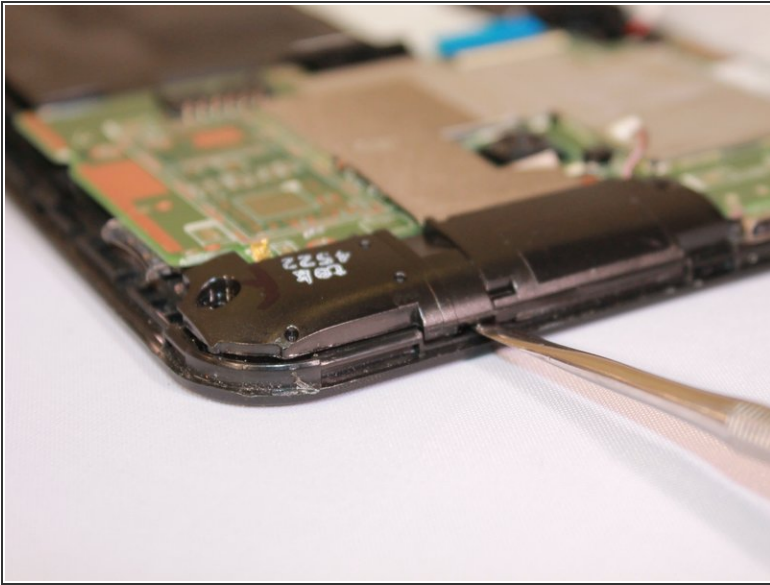


- Use the Phillips #000 screwdriver to unscrew the seven screws.

**i** There should be two silver and five black screws.

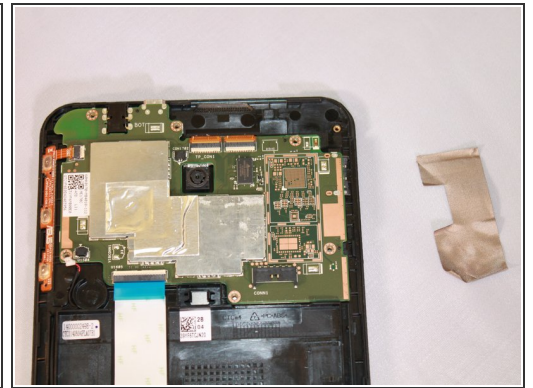
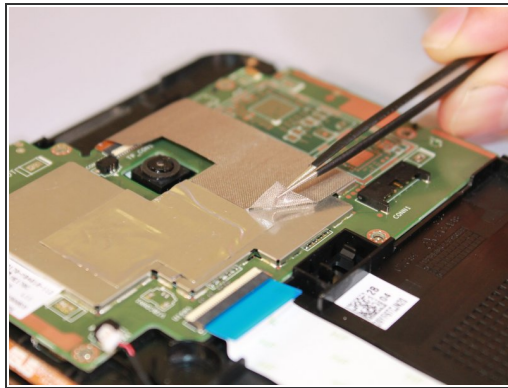
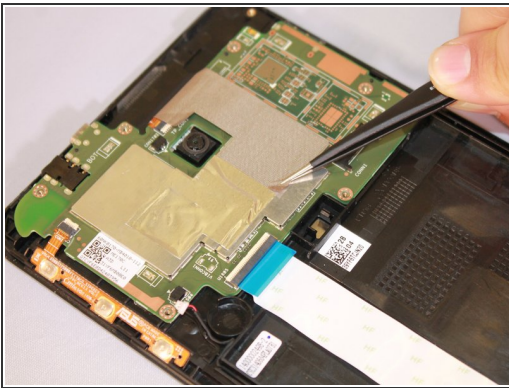


## Step 9



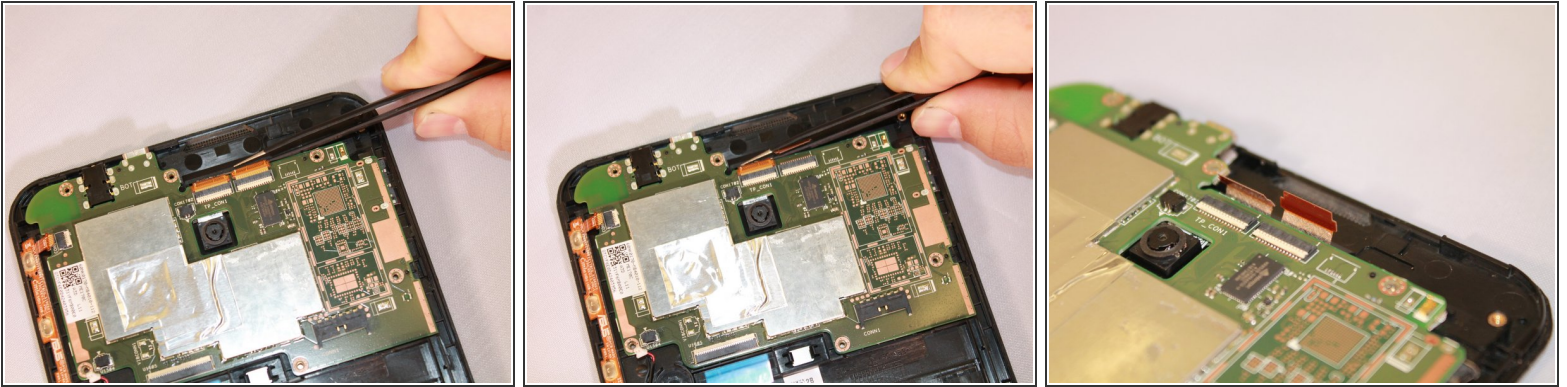
- ⓘ Once the screws are removed, the speaker component will be loosely laying in the track.
- Use the metal spudger tool to remove the speaker by gently lifting the edge of it.

## Step 10



- Remove the silver tape on one corner with the needle nosed tweezers, and remove the tape from the motherboard.

## Step 11



- Use the needle nosed tweezers to gently pull both of the orange ribbon cables out of their ports.

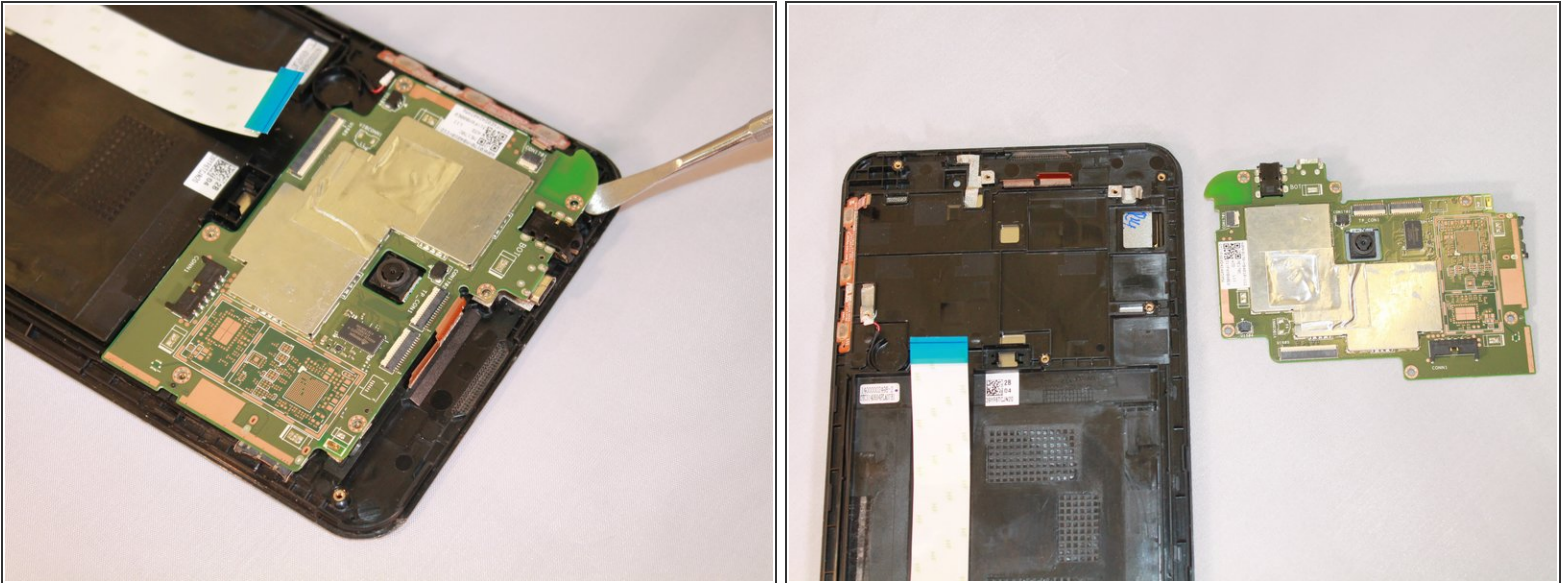
## Step 12



- Use the Phillips #000 screwdriver to unscrew all five screws.

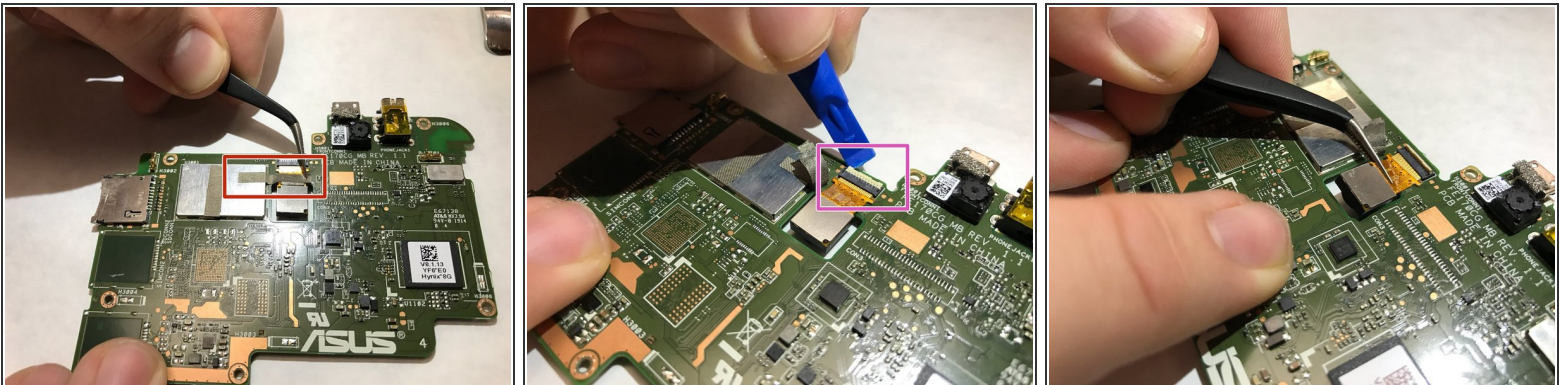


## Step 13



- To uninstall the motherboard, use the metal spudger tool to lift it out of the device.

## Step 14 — Rear Facing Camera



- Gently remove grey tape that is holding down connector for camera using the tweezers.
- When tape is removed, use the plastic prying tool to gently unlock connector between camera wiring and motherboard. The connector lock rotates upward away from motherboard to release.
- Carefully remove camera from motherboard using tweezers by pulling directly upward. Camera should release easily without much resistance.

To reassemble your device, follow these instructions in reverse order.