



Asus MeMO Pad 8 ME181C Front Facing Camera Replacement

In this guide we will show you how to remove and replace the Front Facing Camera.

Written By: Anthony Tillett

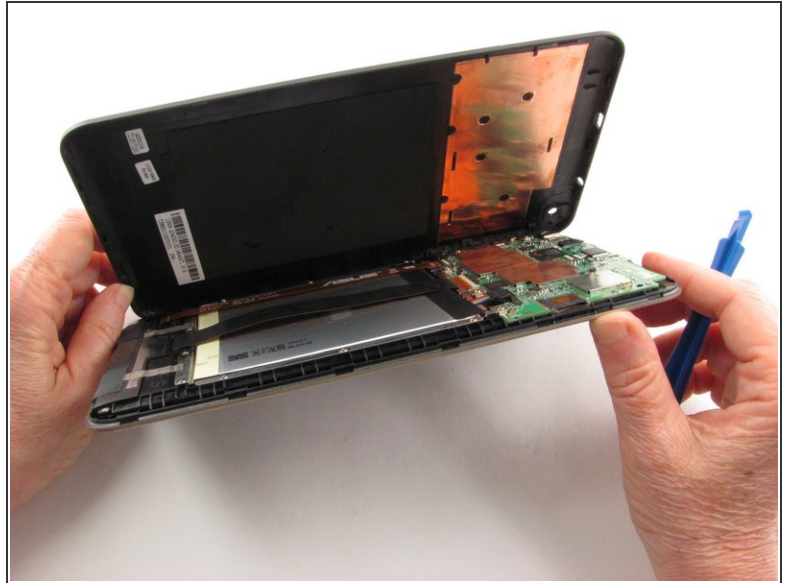
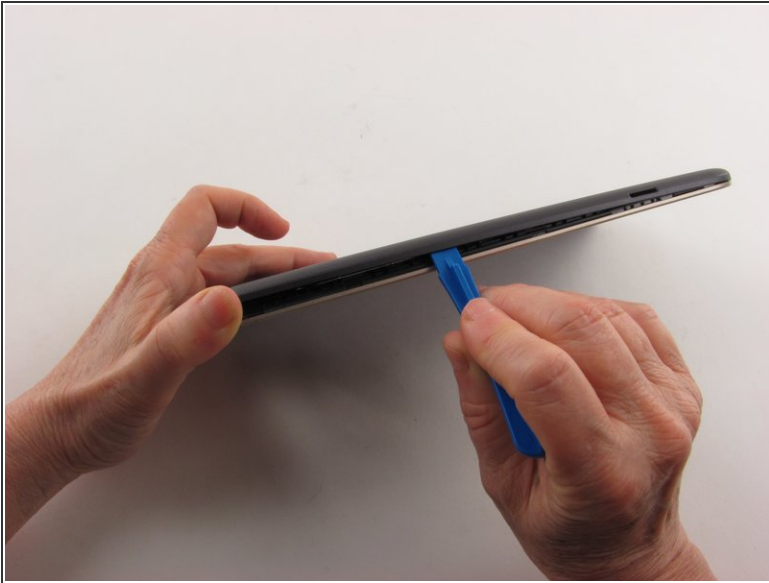




TOOLS:

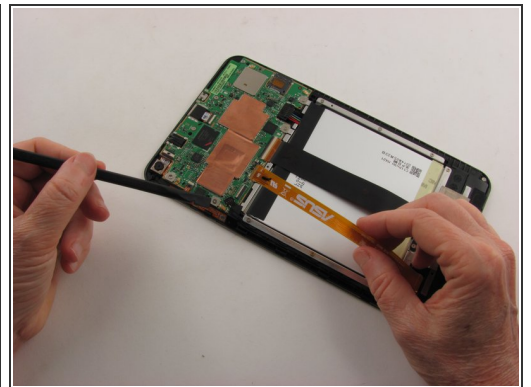
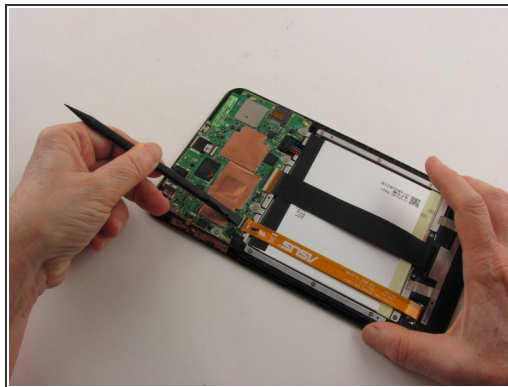
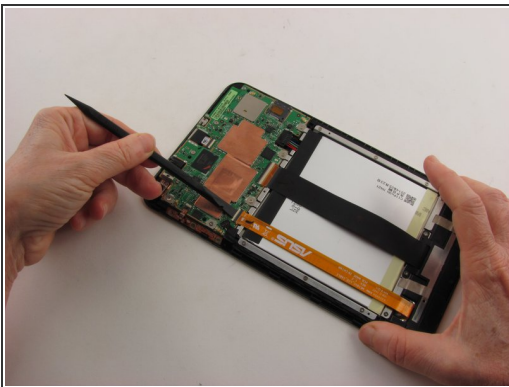
- [iFixit Opening Tools](#) (1)
 - [Spudger](#) (1)
 - [Phillips #000 Screwdriver](#) (1)
 - [Tweezers](#) (1)
-

Step 1 — Rear Case



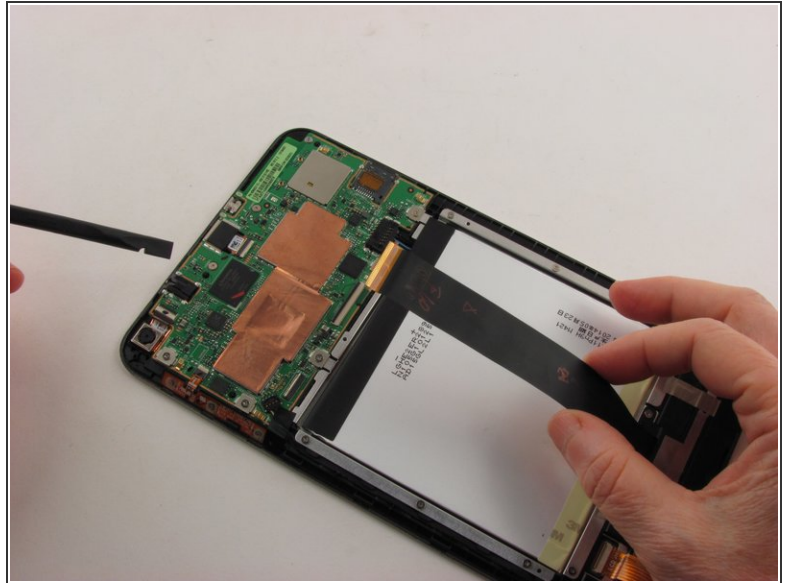
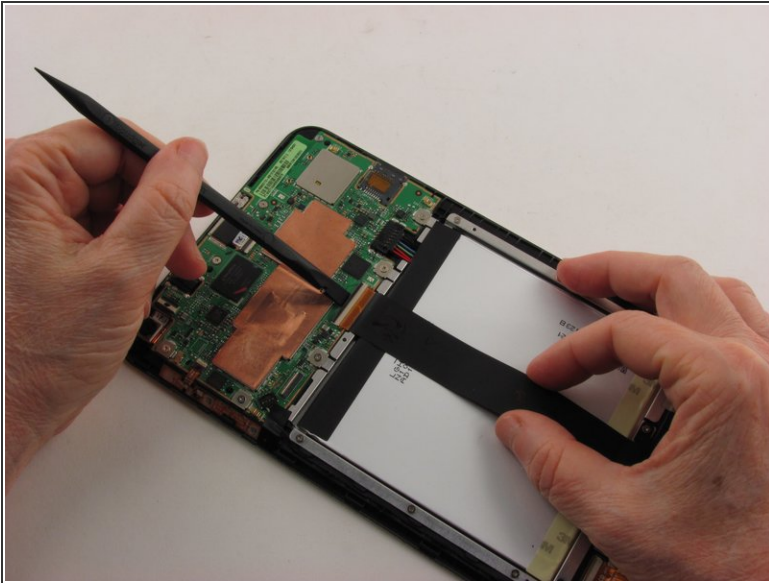
- Insert a plastic opening tool into the seam between the rear case and the screen.
- Work the plastic opening tool around the perimeter of the device to completely remove the rear case.

Step 2 — Battery



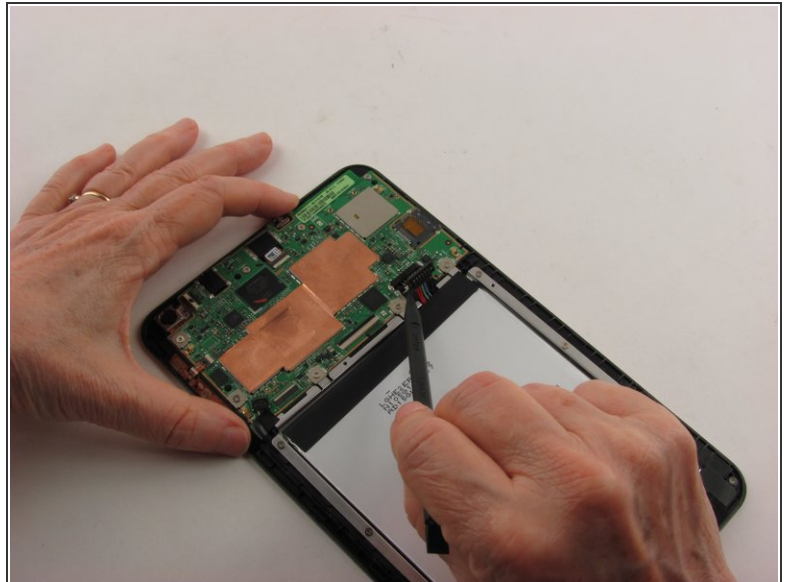
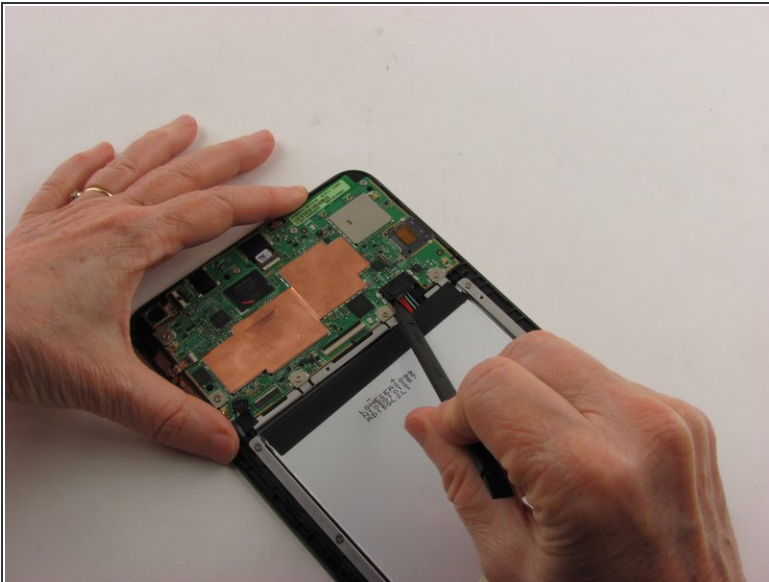
- Use the flat end of the nylon spudger to flip up the retaining flap of the Zero Insertion Force (ZIF) connector holding the orange motherboard ribbon cable in place.

Step 3



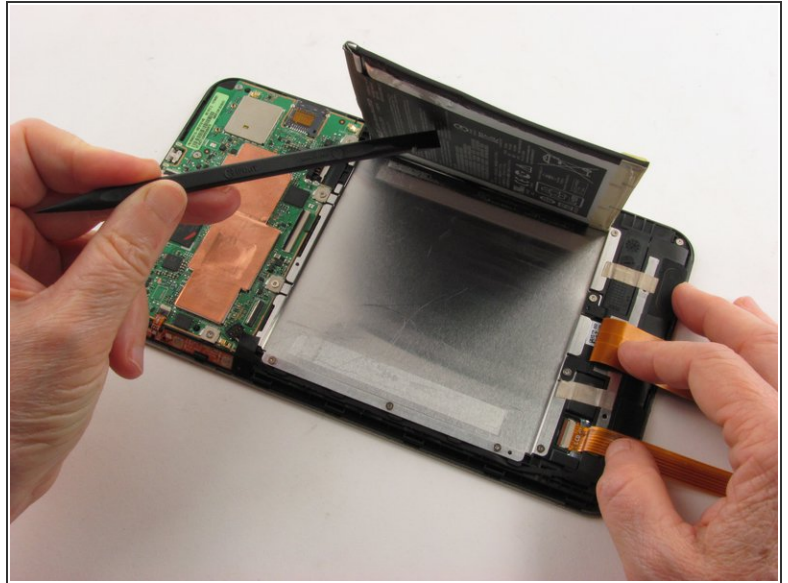
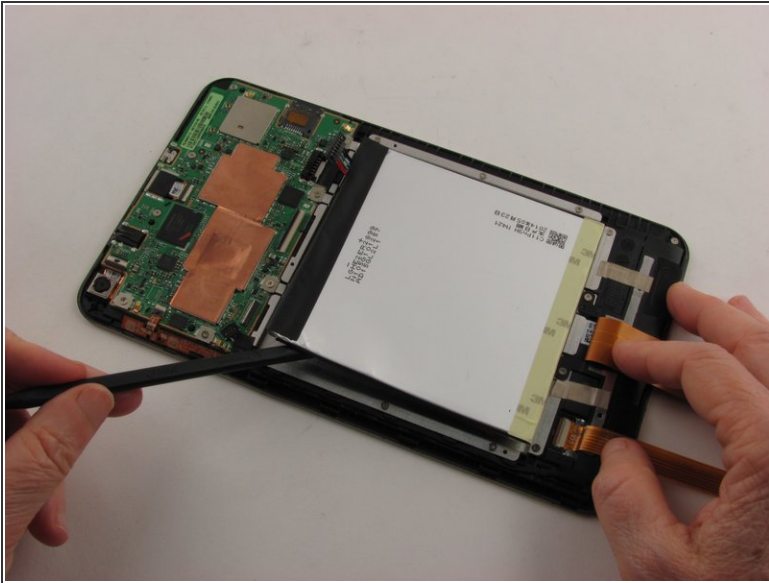
- Use the flat end of the nylon spudger to flip up the retaining flap of the ZIF connector holding the black motherboard ribbon cable in place.

Step 4



- Use the pointed end of the nylon spudger to pop up the battery connector.
- ☑ When reconnecting the battery cable after replacing the battery, press the battery connector with your finger until it clicks into place.

Step 5



- Use the flat end of the nylon spudger to pry up the battery.
- ⓘ The battery is secured with adhesive. Some force is required to detach battery from the device.
- ⚠ If removing motherboard is necessary, it may be easier complete this step with the motherboard simultaneously later.

Step 6 — Motherboard



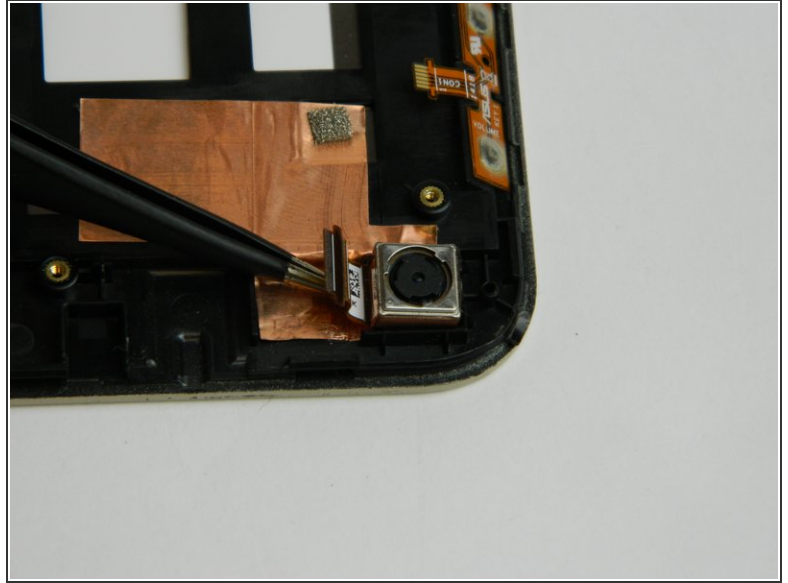
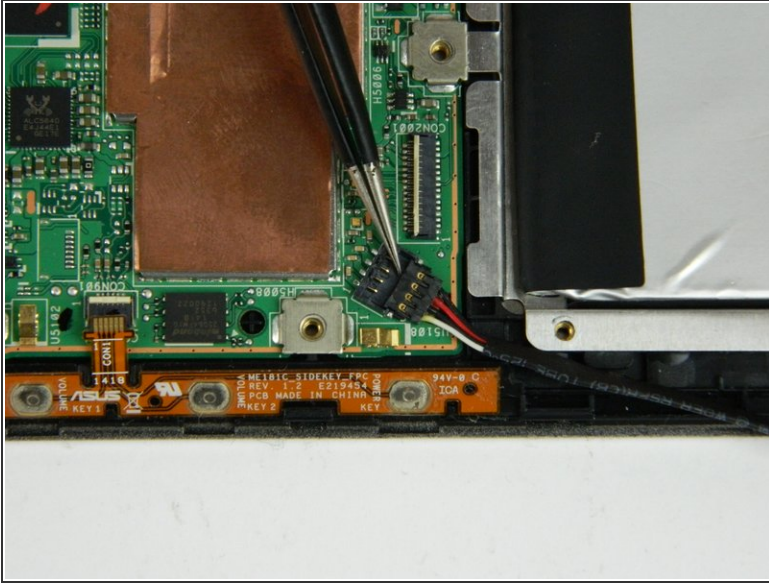
- Working from top to bottom, you will remove all screws with a #000 Phillips head driver, (20) total.
- (2) screws located in the top corners. NOTE: These screws will be in the speakers.
- (4) screws located along the top of the battery, (3) along each side of the battery, and (3) along the bottom of the battery.
- (1) screw in the middle of the motherboard on the side with the orange ribbon cable, (4) screws in the bottom of the motherboard .

Step 7



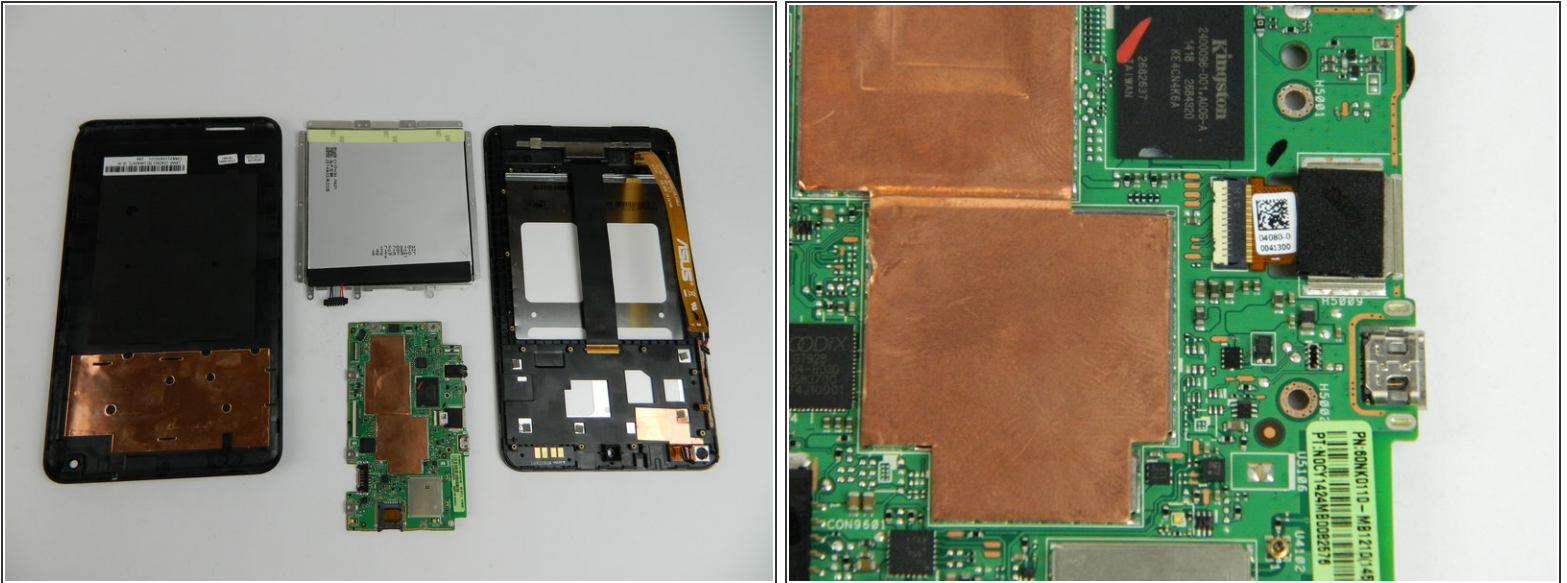
- Make sure that the battery is disconnected from the motherboard by unplugging the ribbon cables.

Step 8



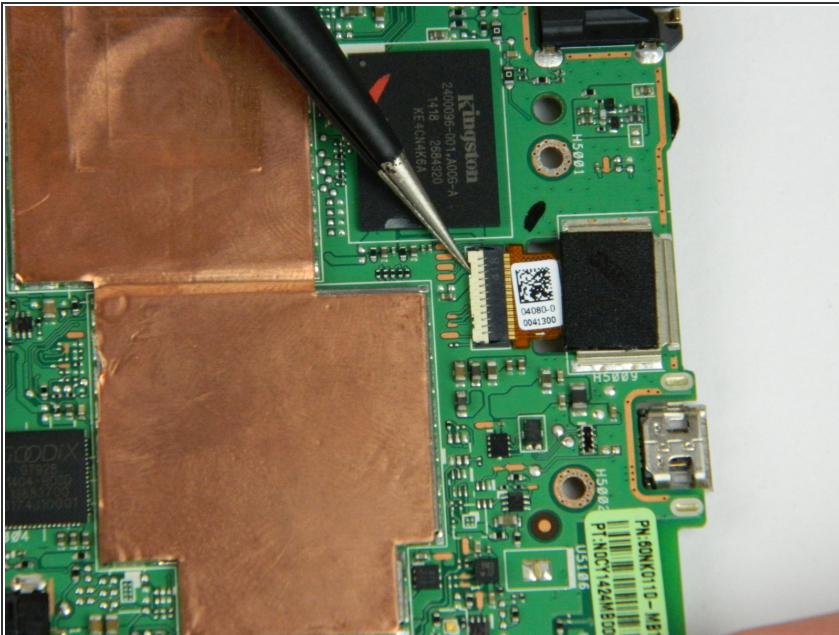
- Before you remove the entire assembly, first unplug side buttons and cameras from the motherboard using tweezers.
- ☑ The motherboard is easiest to remove simultaneously with the battery. Refer to Step 5 for more details.

Step 9



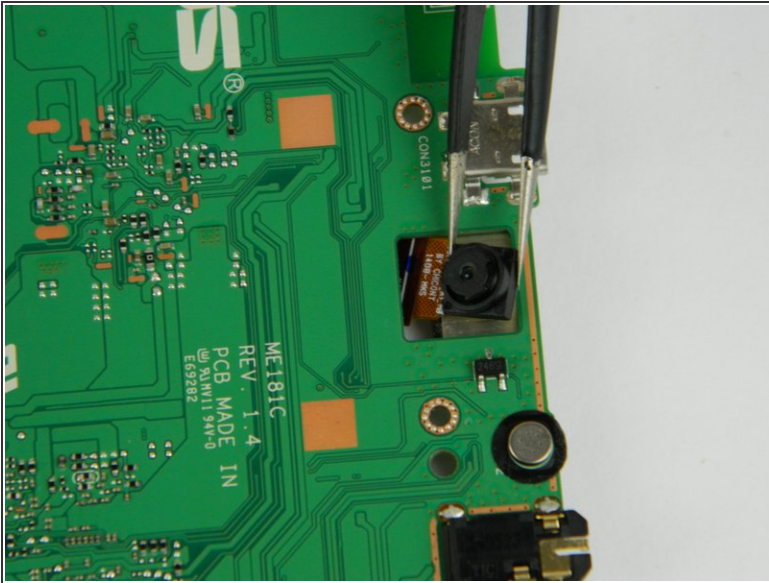
- While the device is open, this is your opportunity to check and see if there is any other damage to the motherboard or other associated parts.

Step 10 — Front Facing Camera



- In the middle of the Motherboard there will be a little ribbon cable (white tab must be lifted to removed cable.)

Step 11



- Flip Motherboard assembly over and pick out camera. Now the Front Facing camera can be replaced.

To reassemble your device, follow these instructions in reverse order.