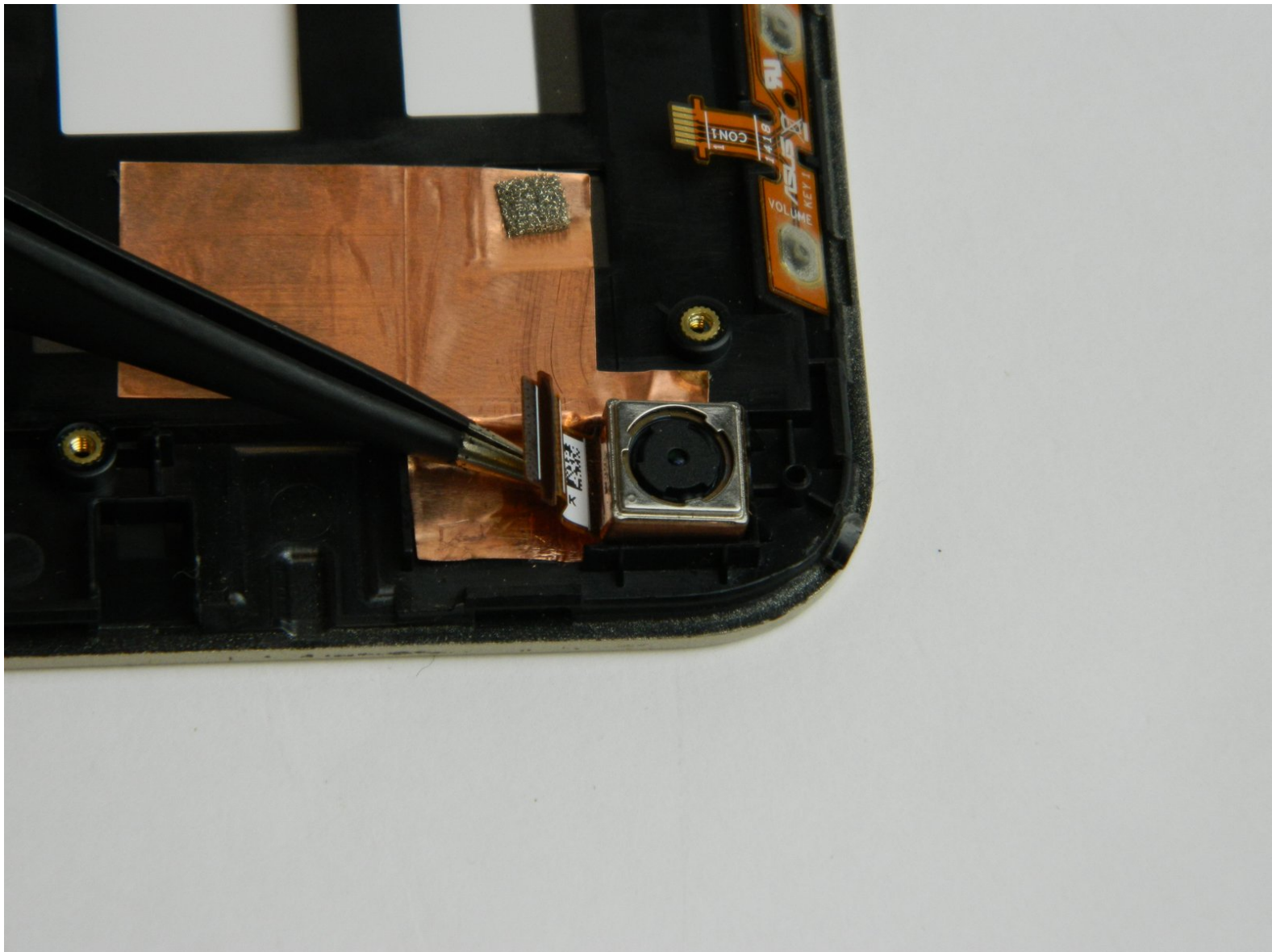




Asus MeMO Pad 8 ME181C Rear Facing Camera Replacement

In this guide we will be showing you how to replace the rear facing camera on your Asus MeMO Pad 8 tablet.

Written By: Anthony Tillett



INTRODUCTION

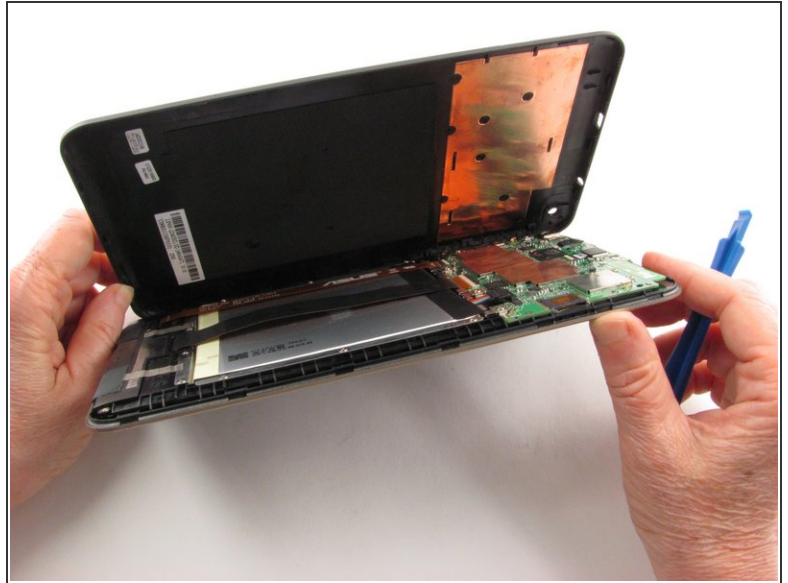
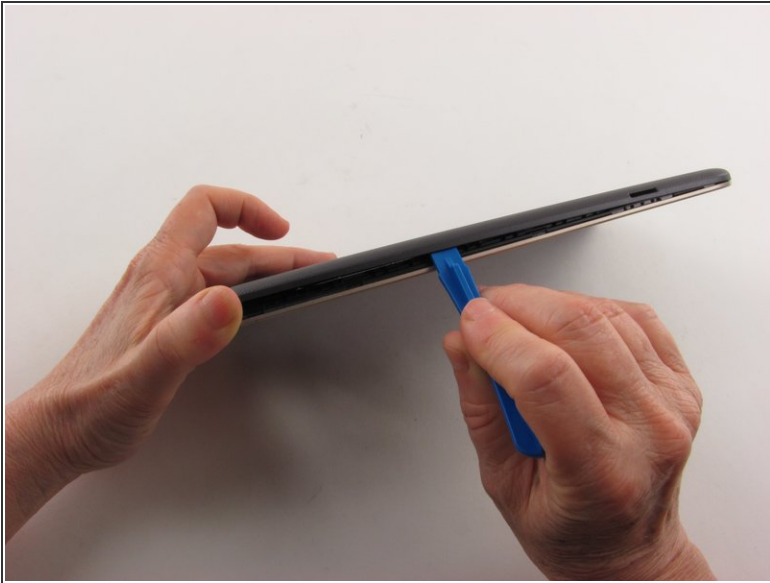
Due to the nature of the component being replaced be sure to wear appropriate gloves to avoid getting any skin based oils or residues onto the camera lens as these will inhibit the lens from functioning properly. As well be careful removing and connecting the ribbon wires as they are very fragile and internal breakages of the wire can lead to the camera being broken as well as other components being damaged.



TOOLS:

- [Tweezers](#) (1)
 - [iFixit Opening Tools](#) (1)
 - [Spudger](#) (1)
 - [Phillips #000 Screwdriver](#) (1)
-

Step 1 — Rear Case



- Insert a plastic opening tool into the seam between the rear case and the screen.
- Work the plastic opening tool around the perimeter of the device to completely remove the rear case.

Step 2 — Motherboard



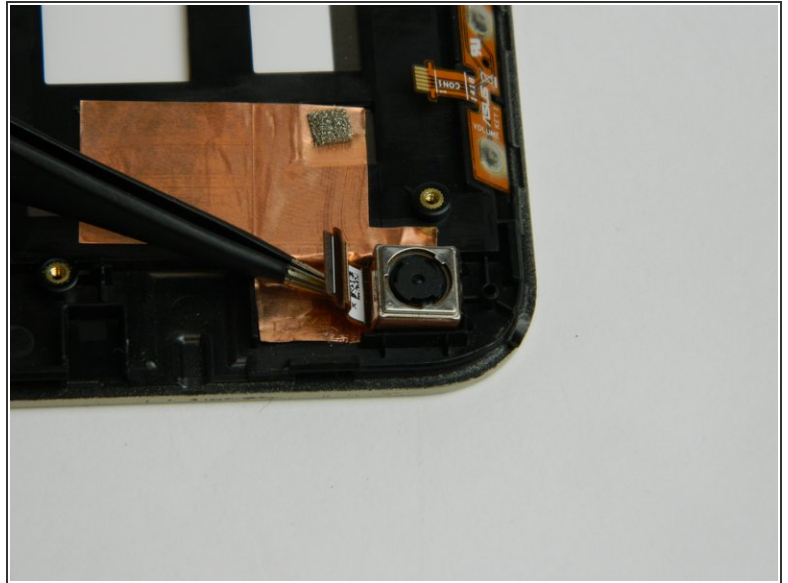
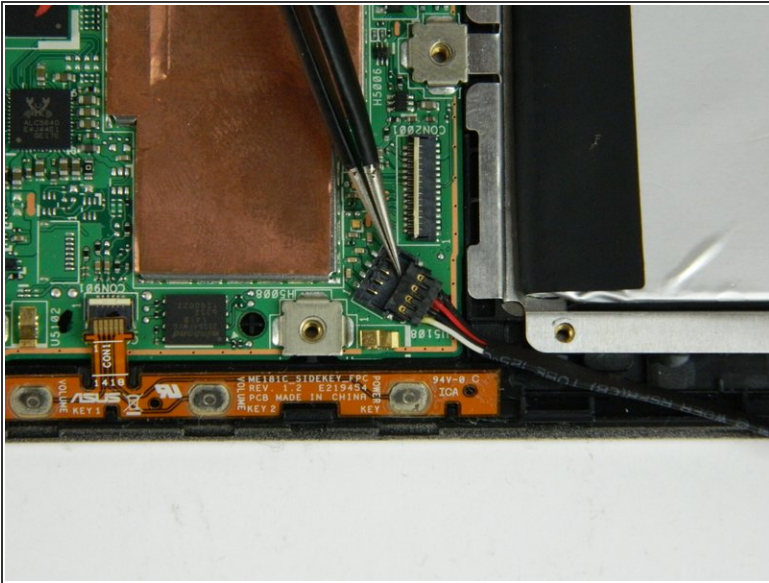
- Working from top to bottom, you will remove all screws with a #000 Phillips head driver, (20) total.
- (2) screws located in the top corners. NOTE: These screws will be in the speakers.
- (4) screws located along the top of the battery, (3) along each side of the battery, and (3) along the bottom of the battery.
- (1) screw in the middle of the motherboard on the side with the orange ribbon cable, (4) screws in the bottom of the motherboard .

Step 3



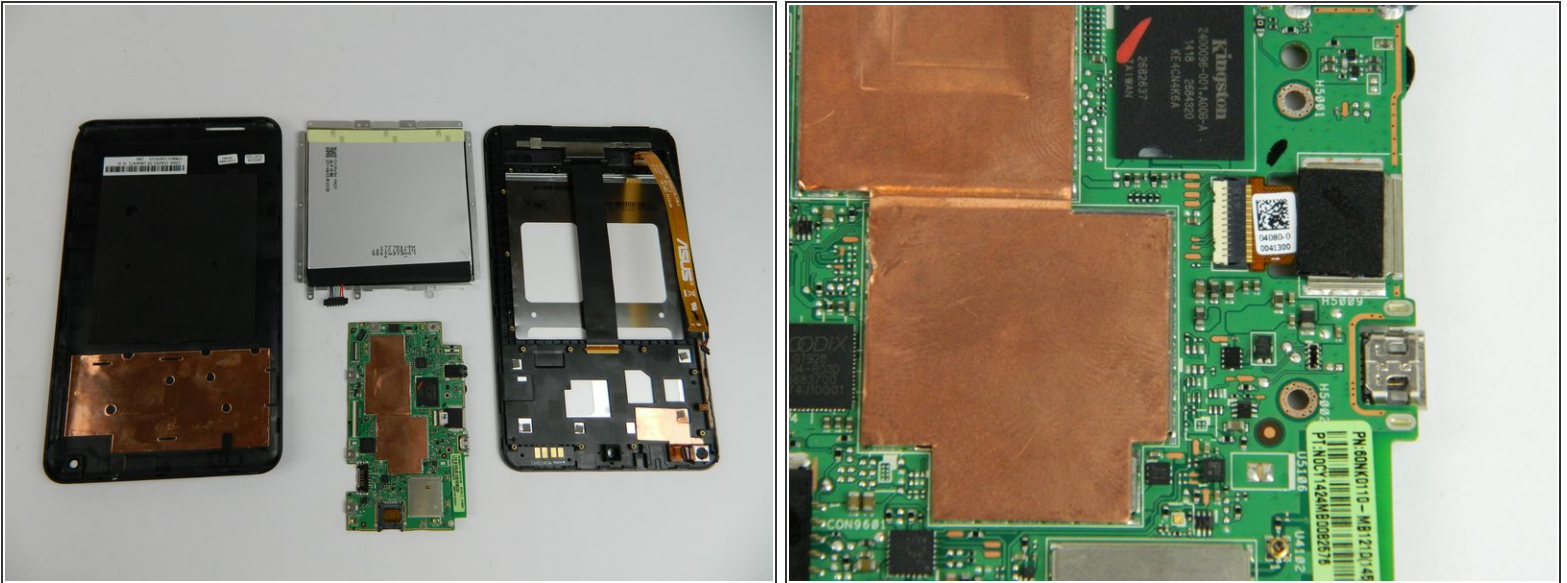
- Make sure that the battery is disconnected from the motherboard by unplugging the ribbon cables.

Step 4



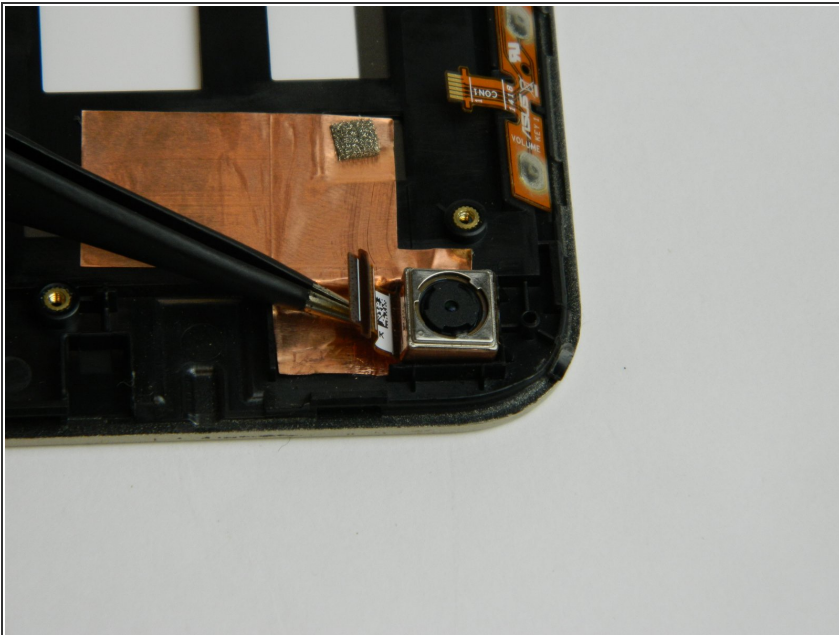
- Before you remove the entire assembly, first unplug side buttons and cameras from the motherboard using tweezers.
- ☑ The motherboard is easiest to remove simultaneously with the battery. Refer to Step 5 for more details.

Step 5



- While the device is open, this is your opportunity to check and see if there is any other damage to the motherboard or other associated parts.

Step 6 — Rear Facing Camera



- Now carefully pry up the rear facing camera using a spudger.
- ⓘ Be careful when using the spudger as you do not want the tool to slip and damage other components of the tablet.

To reassemble your device, follow these instructions in reverse order.

This document was generated on 2019-09-30 12:00:36 AM (MST).

