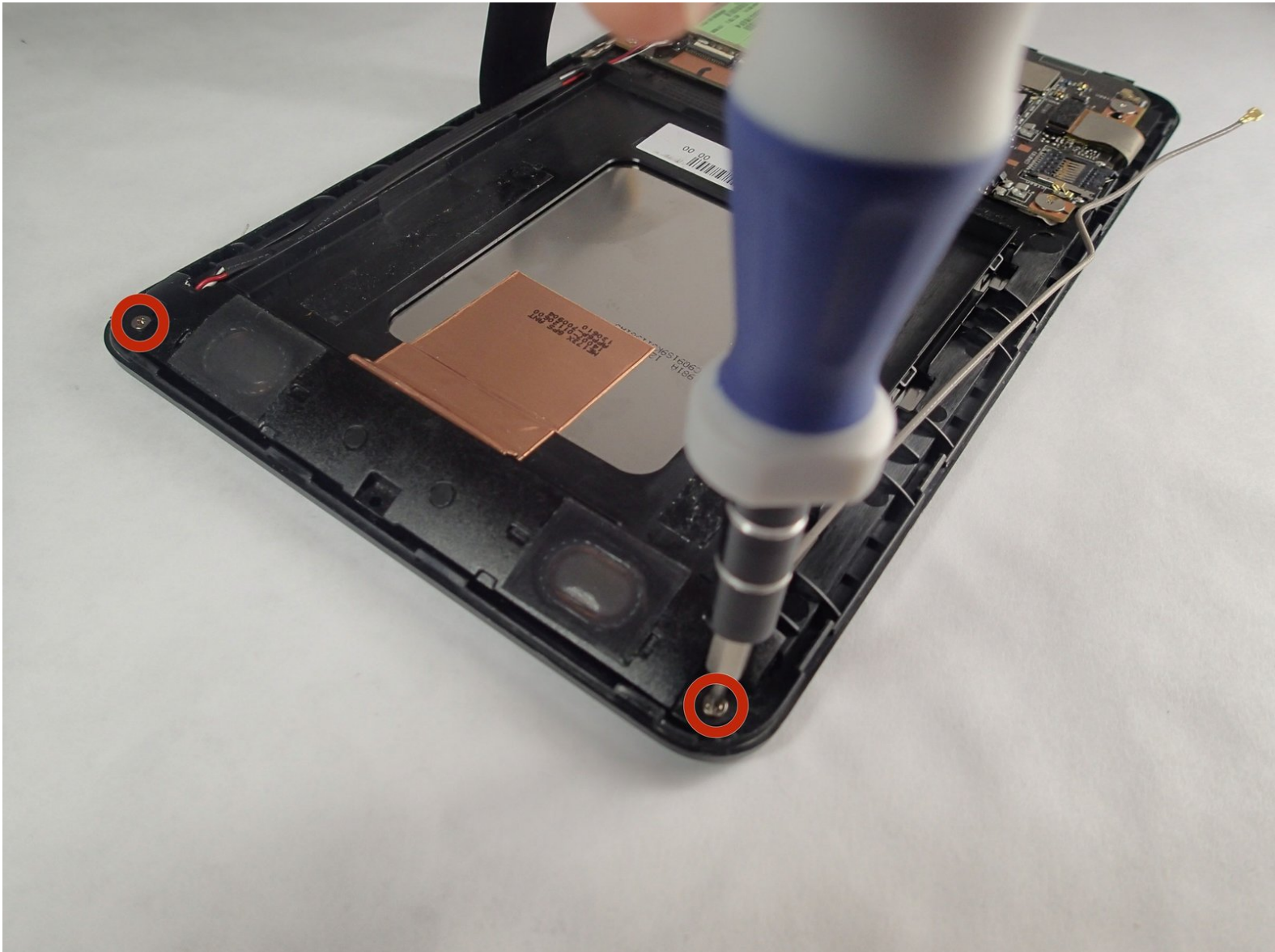




# Asus MeMO Pad HD 7 Speaker Assembly Replacement

Bring back sound to your tablet by replacing the speaker assembly.

Written By: Julien Daigle



## INTRODUCTION

This guide will direct you in replacing the entire speaker assembly for the tablet. The guide will require a few simple steps and removing a few small screws from the device.



### TOOLS:

- [iFixit Opening Tools](#) (1)
- [Spudger](#) (1)
- [Phillips #000 Screwdriver](#) (1)



### PARTS:

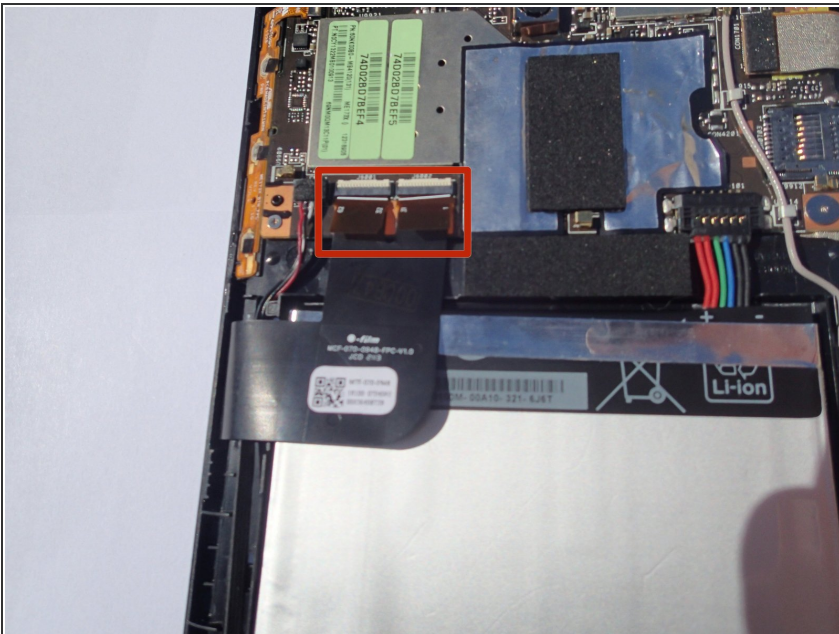
- [ASUS MeMO Pad HD 7 Speaker Assembly \(8 GB Model\)](#) (1)
- [ASUS MeMO Pad HD 7 Speaker Assembly \(16 GB Model\)](#) (1)

## Step 1 — Remove Rear Panel



- Carefully remove the back panel by using a plastic opening tool to remove the panel off the device.
- Pull the back panel away from the device.
- ⓘ The volume buttons can fall out of the case. Pay attention so as not to lose them.

## Step 2



- Unlock the ZIF connectors on the data cables.
- ⓘ Raise the white locking tabs by lifting their upper edge - furthest from the battery - they hinge across the width of the connector.
- Remove the cable from its slot by gently pulling downward on the tabs.
- ★ Check that the touchscreen cables are fully seated when reassembling or touchscreen may have unresponsive areas.

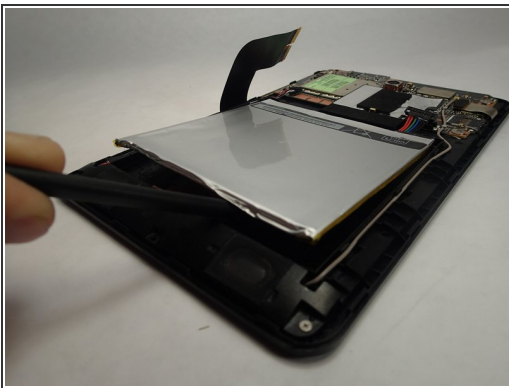


### Step 3



- Locate the battery connector by following the wires that come from the top right of the battery. To disconnect the battery just lift up gently on the wires. Use a spudger or blue plastic opening tool to gently lift the wires if it is hard to get a grip.

### Step 4 — Remove Battery

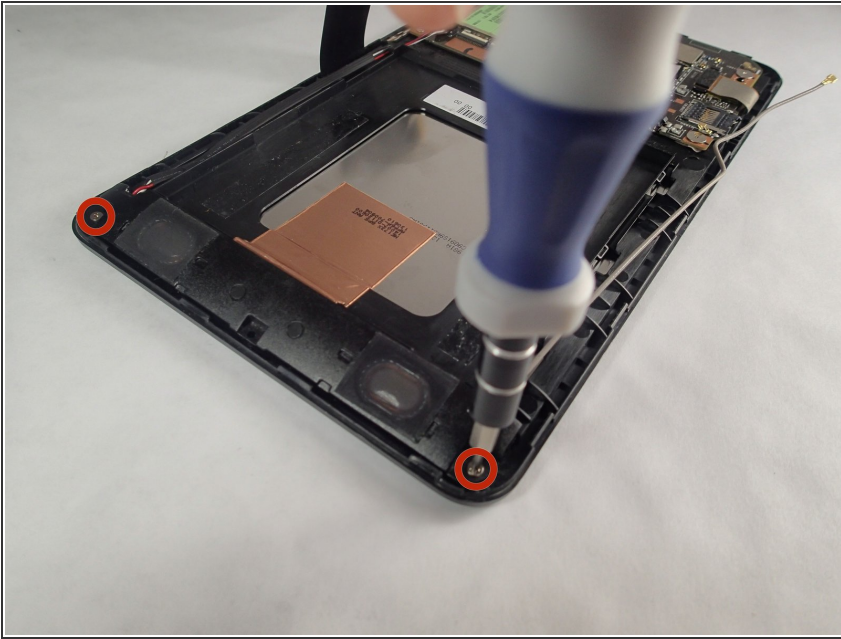


- Using a spudger carefully pry the battery up. It is glued down so slight pressure may be needed.



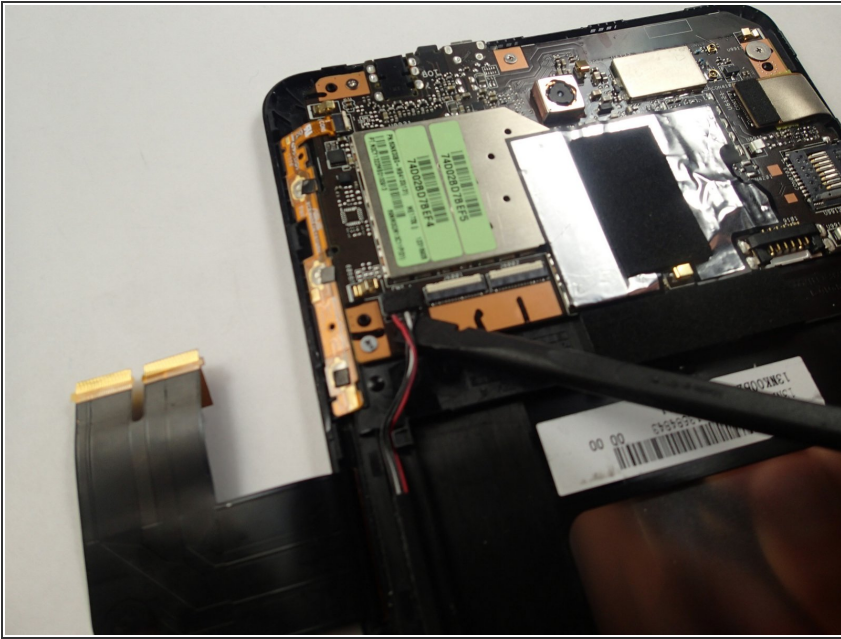
The battery has a soft casing, be careful not to tear the battery casing as chemicals could leak out.

## Step 5 — Speaker Assembly



- Unscrew two Philip's #000 2 mm screws located on the left and right side of the speaker housing.

## Step 6



- Locate the speaker wires to the left side of the battery. Remove the connector by pulling up gently or prying with a tool if you can not get a good grip.

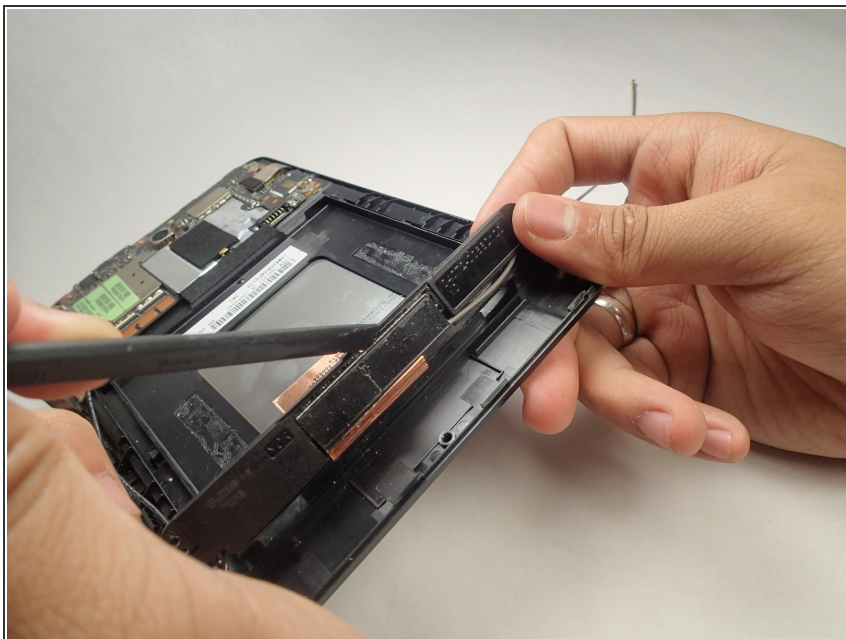
## Step 7



- Pry the GPS Antenna cable straight up using a spudger or similar prying tool. It will be the grey wire that runs up the right side of the device coming from the speaker housing up to the logic board.



## Step 8



- Using a spudger, carefully pry the GPS antenna from the bottom of the speaker housing.
- With the GPS antenna removed from the bottom of the speaker housing it can be removed from the device.

To reassemble your device, follow these instructions in reverse order.