



Asus MeMO Pad HD 8 ME180A Camera Replacement

Please review this guide if you are looking to learn about replacing the camera on an Asus MeMO Pad HD 8 ME180A.

Written By: Rebecca Ellerhorst



INTRODUCTION

You will learn how to replace the camera. Review this guide if you are having difficulties with the camera. In order to replace the camera, you have to remove the battery and motherboard. Please use our [Asus MeMO Pad HD 8 ME180A Battery Replacement Guide](#) and [Asus MeMO Pad HD 8 ME180A Motherboard Replacement Guide](#) to do so prior to starting.



TOOLS:

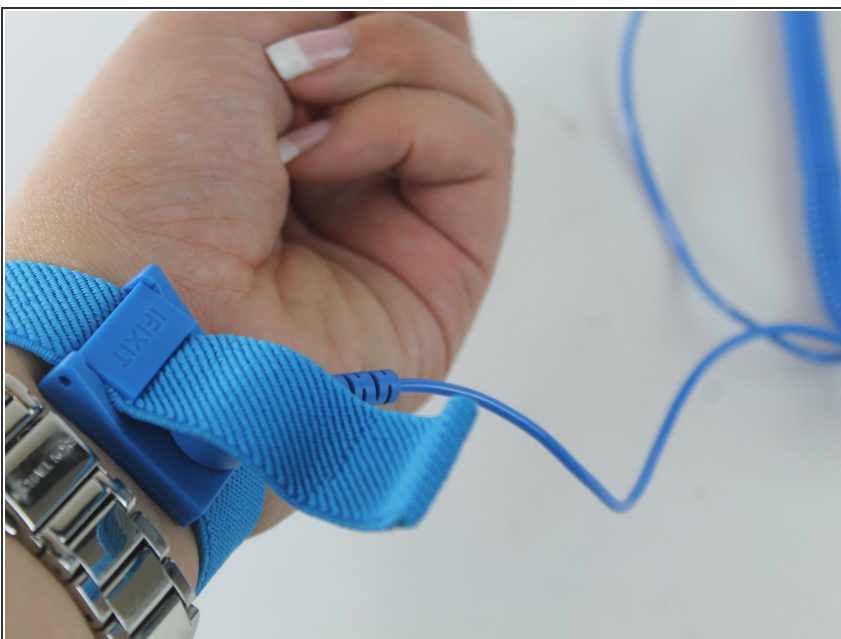
- [iFixit Opening Tools](#) (1)
 - [Phillips #0 Screwdriver](#) (1)
 - [Heavy-Duty Spudger](#) (1)
 - [Anti-Static Wrist Strap](#) (1)
-

Step 1 — Battery



- Use a plastic opening tool to separate the back half from the front half.
- Pull the back panel away from the device.
- ⓘ The volume buttons can fall out of the case. Be careful not to lose them.

Step 2



- Ensure that you are wearing your Anti-Static Wrist Strap.

Step 3



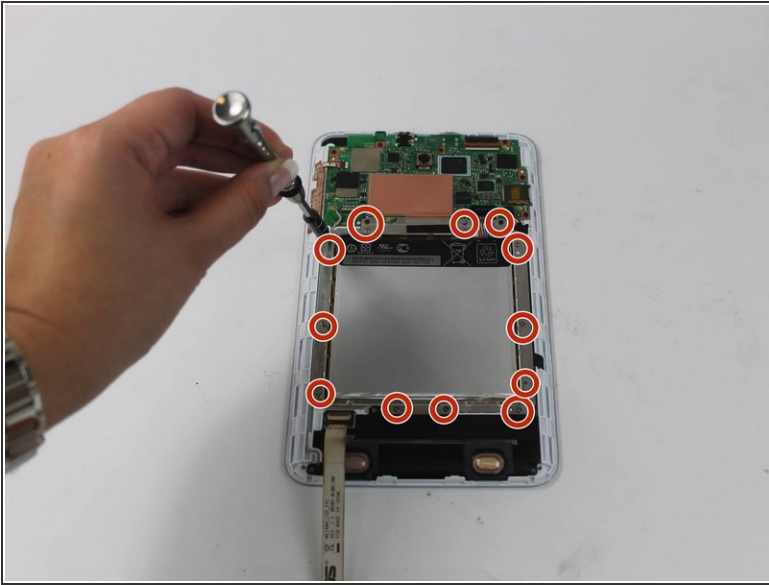
- Lift the white bar on the ZIF connector and pull the metal connector out.

Step 4



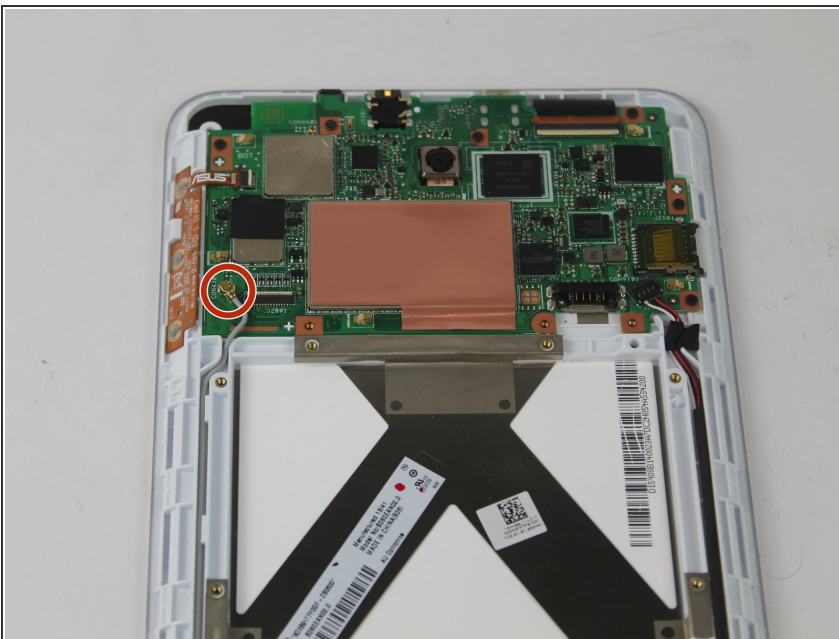
- Using your spudger, press down on the two spots shown in order to release the cables.
- Ensure that the touchscreen cables are fully disconnected.

Step 5



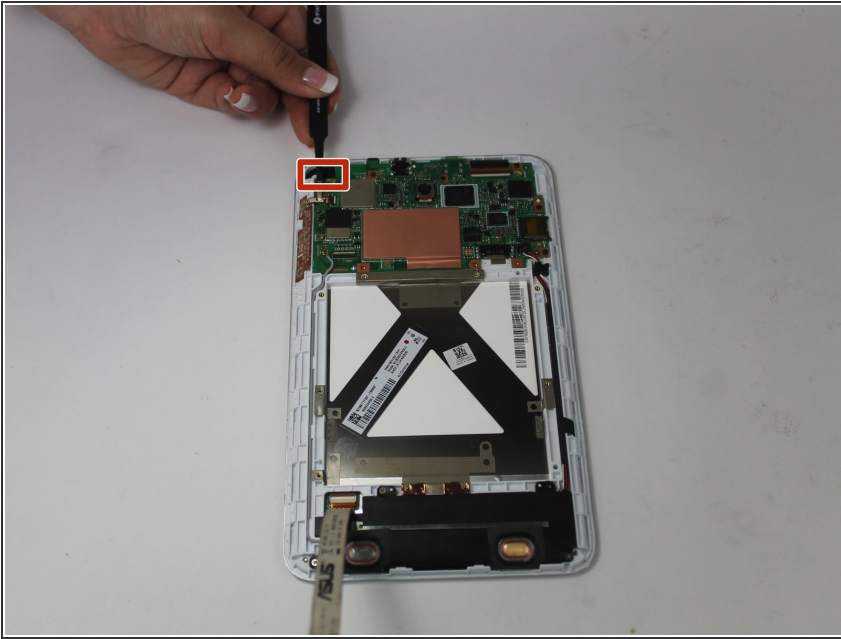
- Using a PH#0 screwdriver, remove the twelve silver 3.2 mm screws.
- Pull the battery out.

Step 6 — Motherboard



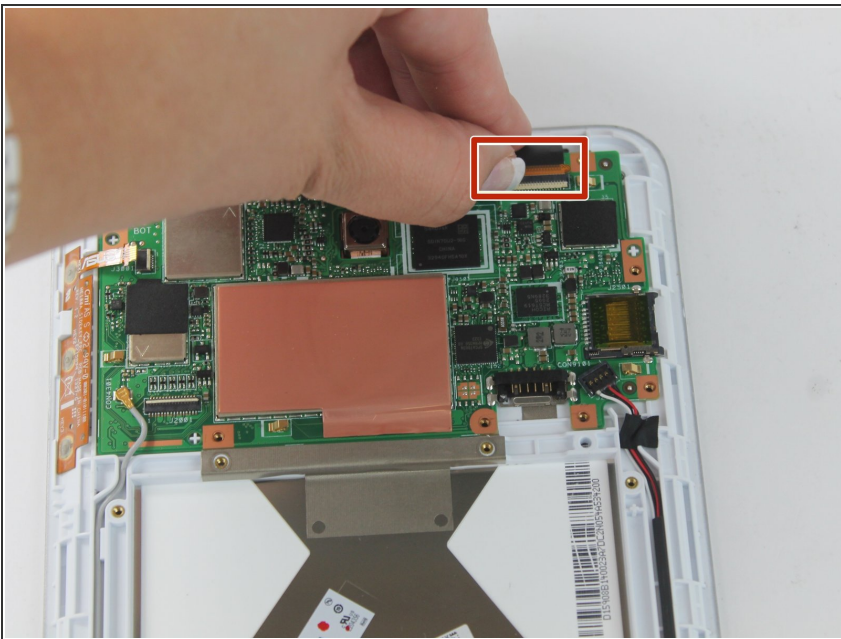
- Disconnect GPS Antenna cable.

Step 7



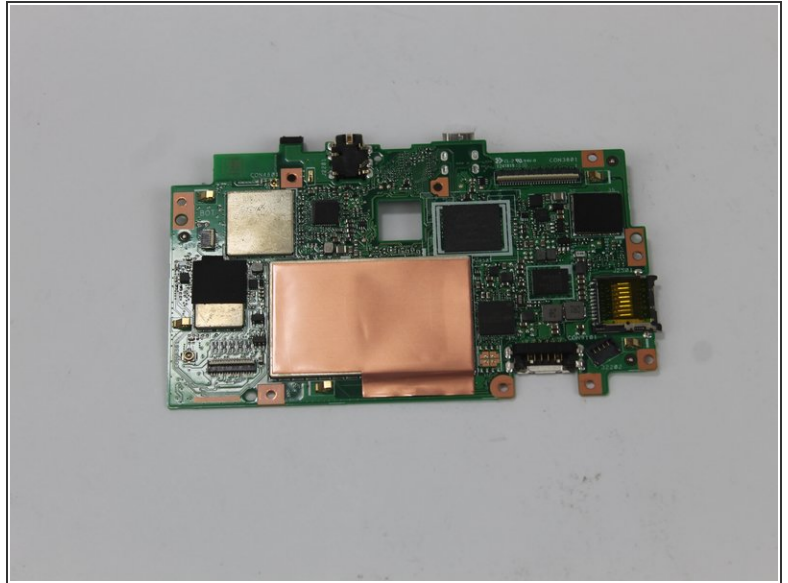
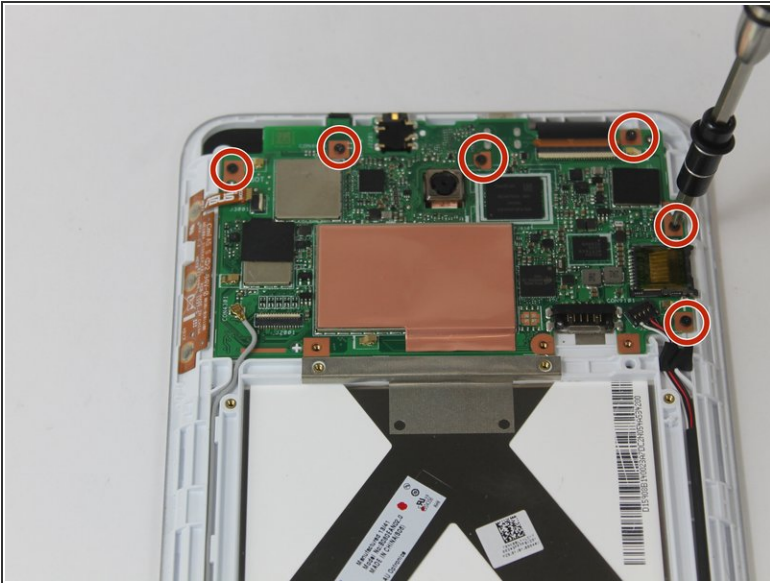
- Flip the latch and pull the ribbon cable to disconnect the ZIF connector.

Step 8



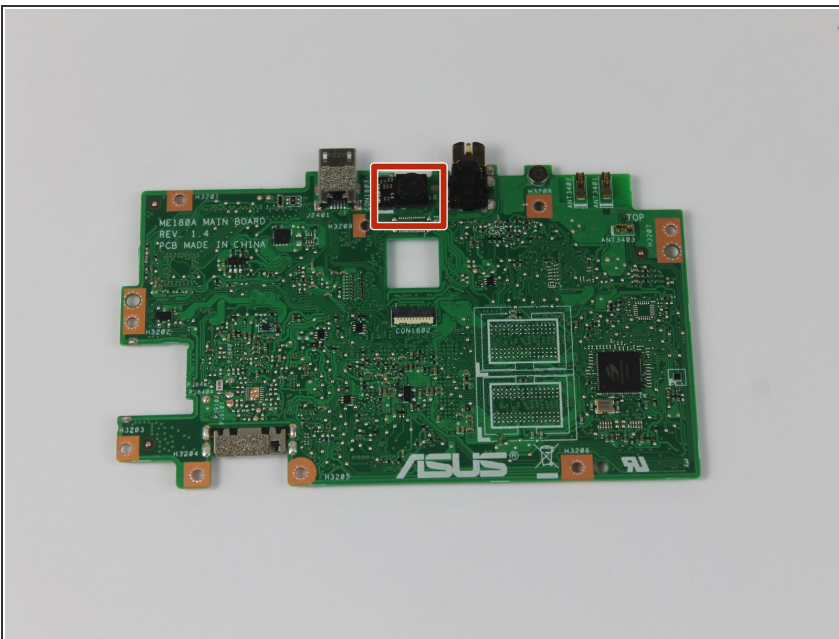
- Flip the latch and pull the ribbon cable to disconnect the ZIF connector.

Step 9



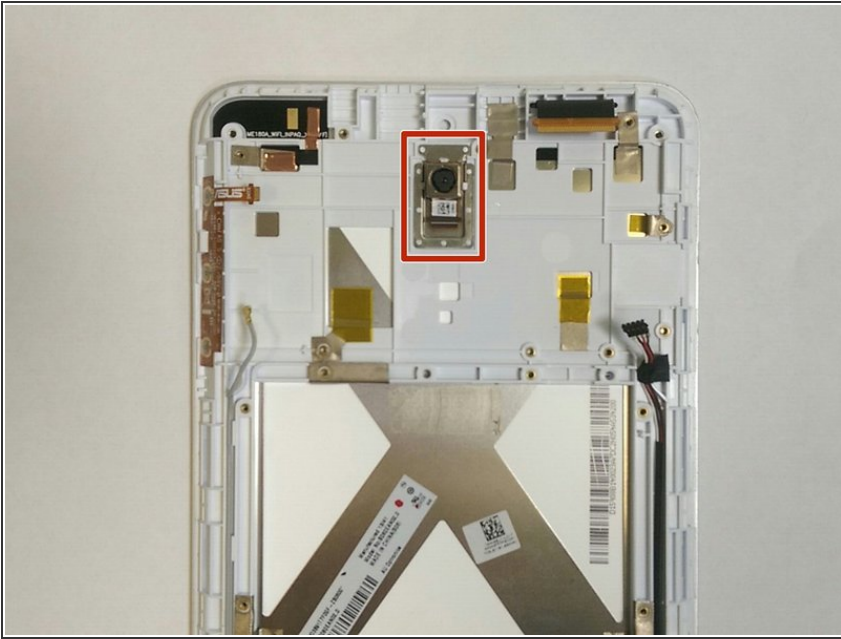
- Use a PH#0 screwdriver to unscrew the six 3.0 mm black screws.
- Lift the motherboard straight up to remove.

Step 10 — Camera



- Upon removal of the motherboard, flip the motherboard to the side so the front-face camera faces you.
- Remove the front facing camera.

Step 11



- Upon removal of the front-face camera, flip your device to the side so the back-face camera faces you.
- Using a pair of tweezers, grab the back-face camera and pull it straight out.

To reassemble your device, follow these instructions in reverse order.