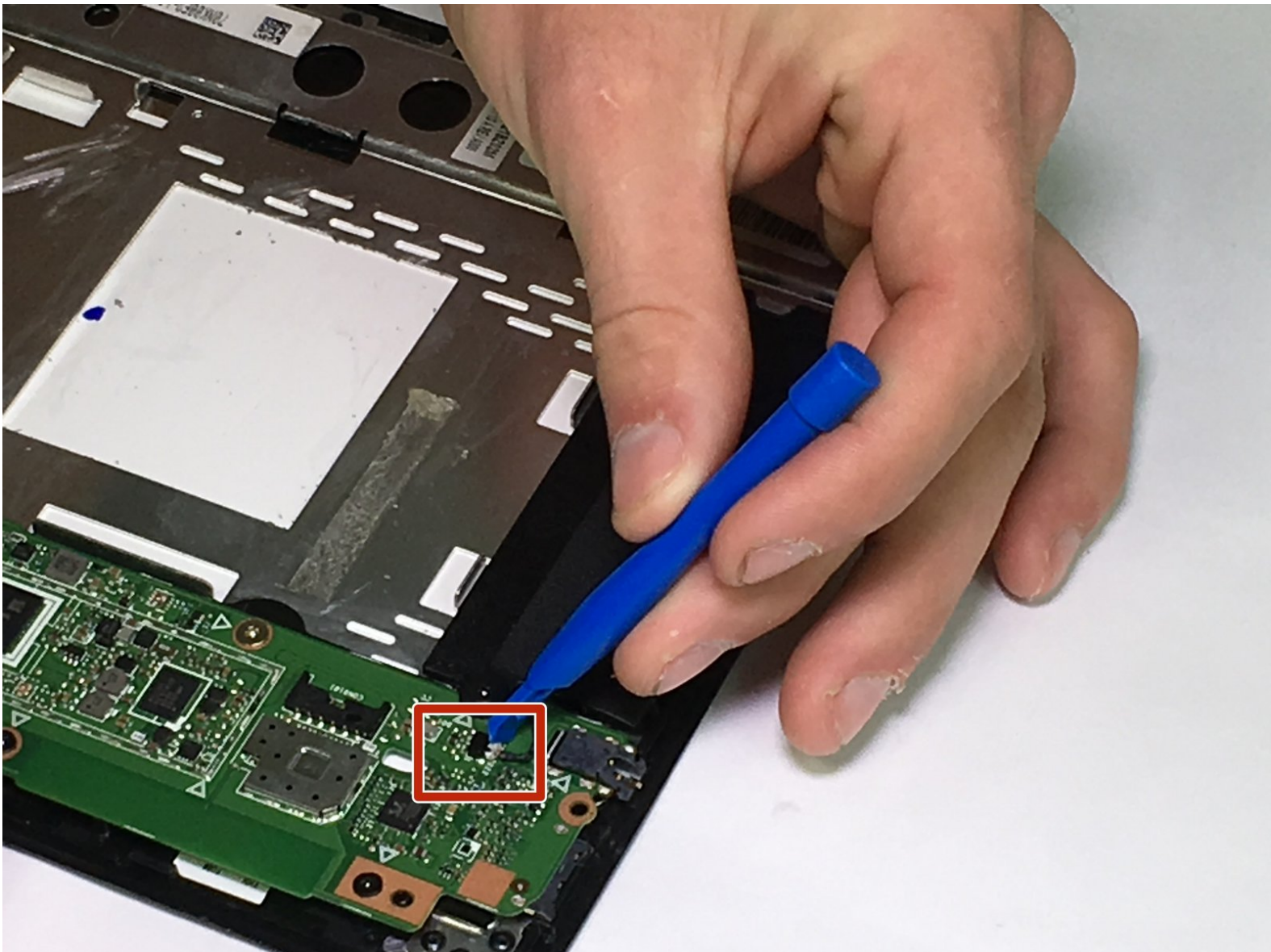




# Asus MeMo Pad 10 ME102A Speaker Replacement

This guide will help you remove and replace the left and right speakers for the Asus MeMo Pad 10 ME102A.

Written By: Thian Kraft



---

## INTRODUCTION

This guide will teach you how to remove the speakers for the Asus MeMo Pad 10 ME102A

---



### TOOLS:

- [iFixit Opening Tools](#) (1)
  - [Phillips #00 Screwdriver](#) (1)
-

## Step 1 — Back Panel



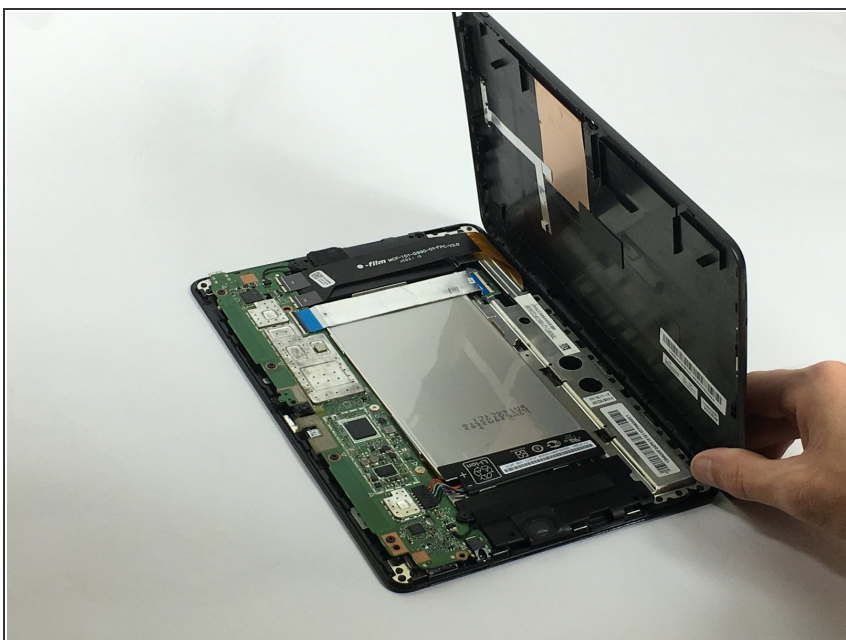
- Insert the blue plastic opening tool into the seam between the back panel and the chassis.
- ⓘ When removing the back panel, remember to keep the device face down on a flat surface in order to prevent dropping the device or anything inside of the device.

## Step 2



- Slide the plastic opener around the tablet. There will be spots of resistance. These should gently pop open as the tool slides through the seam.

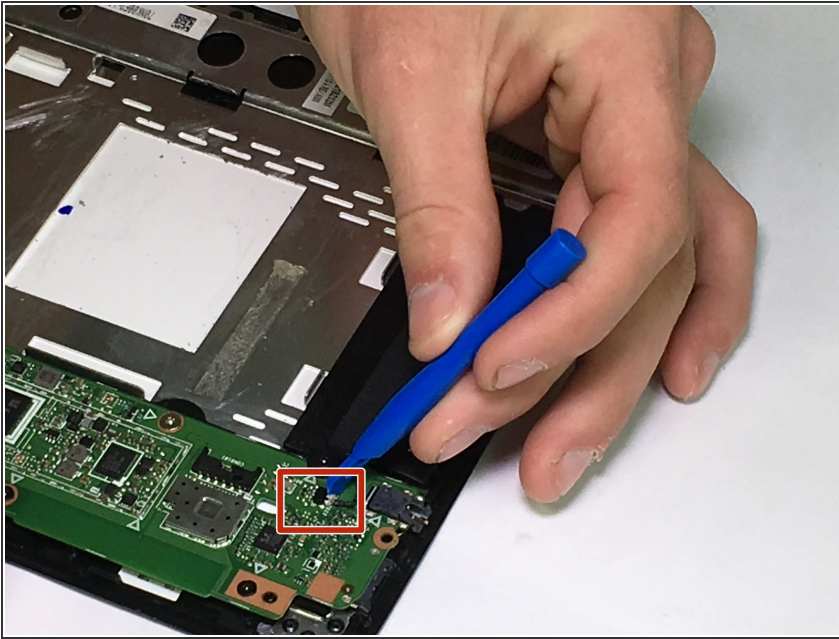
## Step 3



- After all of the clips have been opened, the back panel should be free to remove by hand

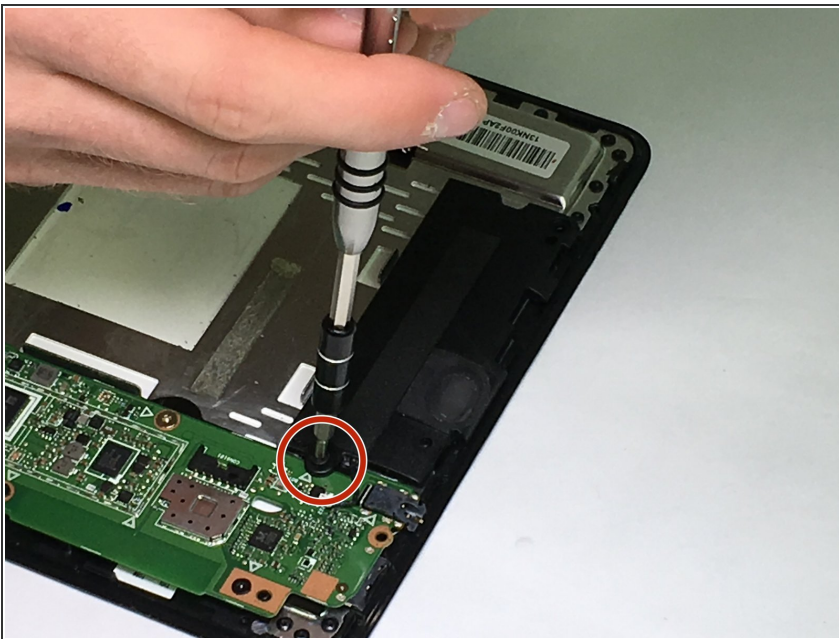


## Step 4 — Speakers



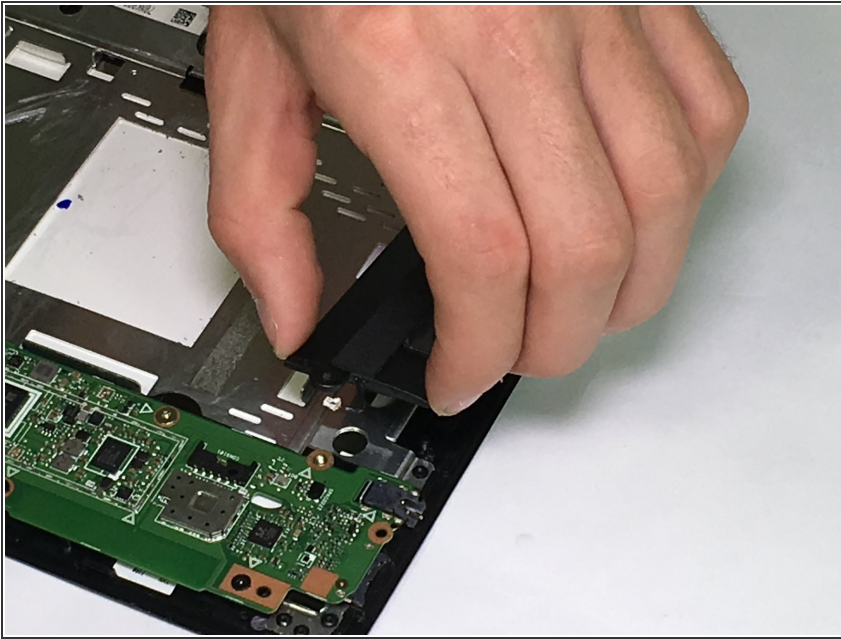
- The right-hand speaker is labeled ME102A-R and is located by the battery plug. This is the first speaker removed in this guide, however if the left-hand speaker is the only one you need to replace please skip down to the left-hand speaker section.
- Unplug the speaker cable by gently pushing it parallel to the motherboard with the flat side of the blue plastic opening tool.

## Step 5



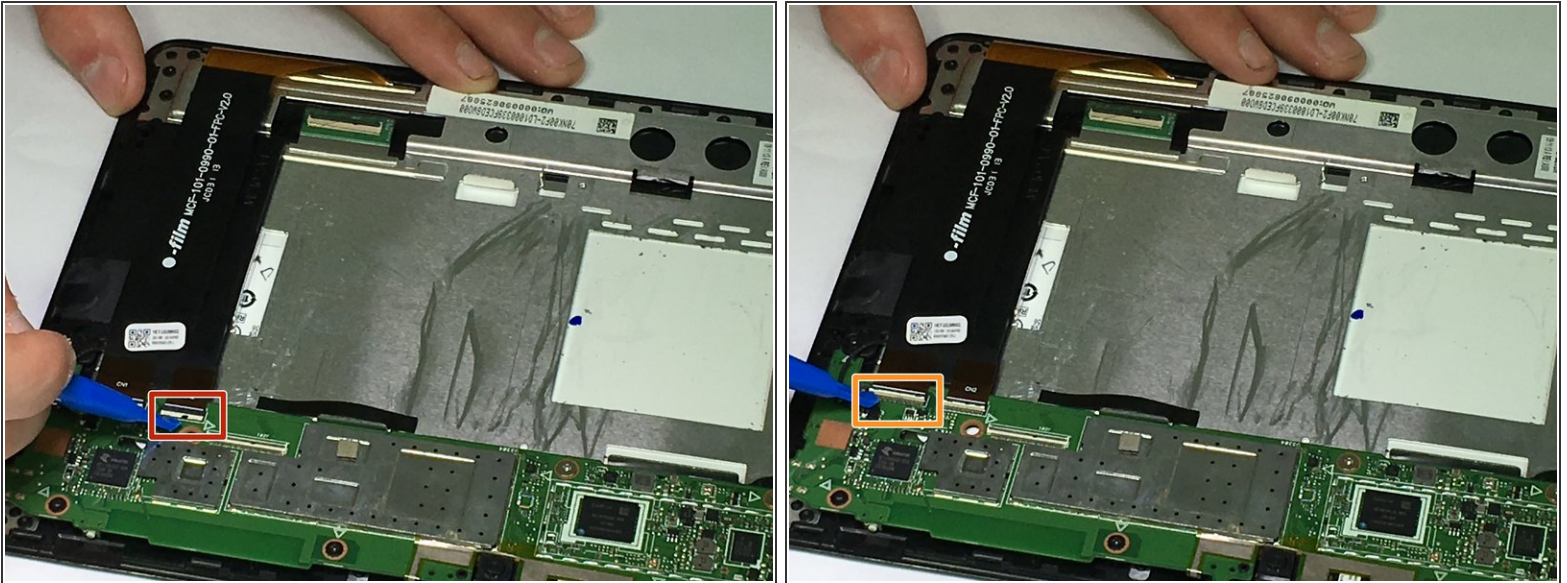
- Unscrew the M2x4mm screw with the PH00 screwdriver attachment.

## Step 6



- Lift the speaker up by the end opposing the steel latch and slide it out from under the steel latch. The speaker has now been removed.

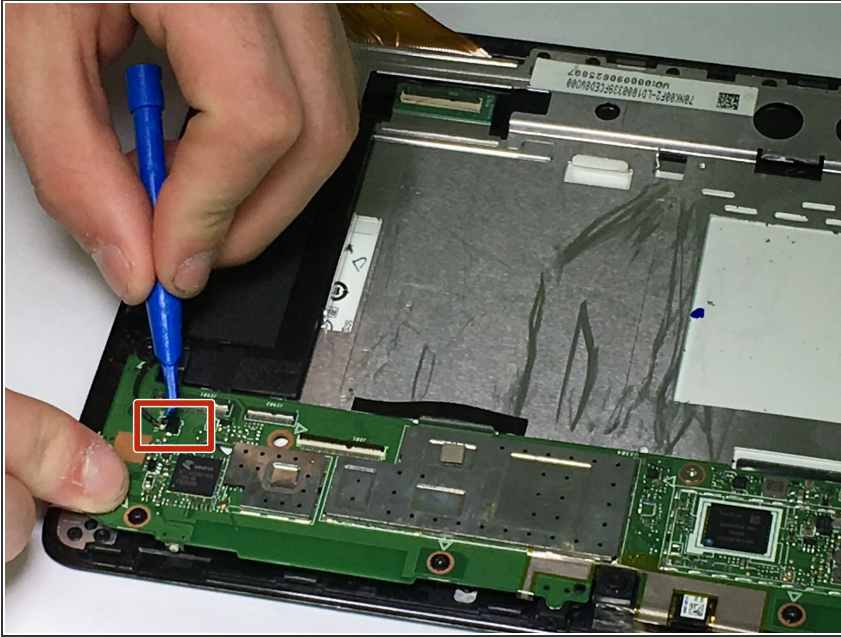
## Step 7



- The left-hand speaker is designated by the lettering ME102A-L and is located by the silver and blue ribbon cable running across the top of the battery.
- Remove the Ribbon cable labeled CN2 by gently prying up the white latch of the black and white plugs by using the small blue plastic opening tool.
- Remove the Ribbon cable labeled CN1 by gently prying up the white latch of the black and white plugs by using the small blue plastic opening tool.

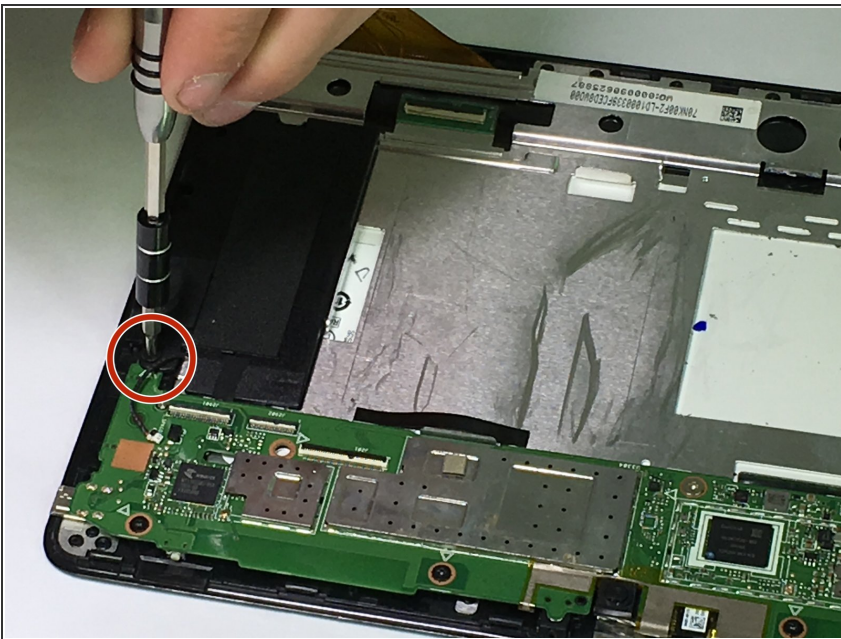


## Step 8



- Unplug the speaker cable by gently pushing it parallel to the motherboard with the flat side of the blue plastic opening tool.

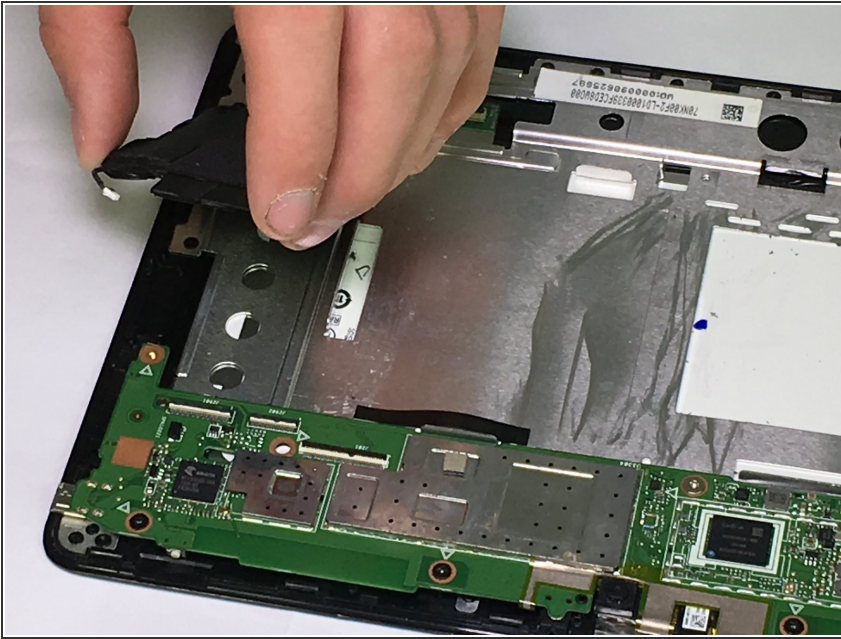
## Step 9



- Unscrew the M2x4mm screw with the PH00 screwdriver attachment.



## Step 10



- Lift the speaker up by the end opposing the steel latch and slide it out from under the steel latch. The speaker has now been removed.

To reassemble your device, follow these instructions in reverse order.