



# Asus P53E replacement of hard drive or replacement by a SSD Replacement

replacement of hard drive or replacement by a SSD

Written By: Mojo





## TOOLS:

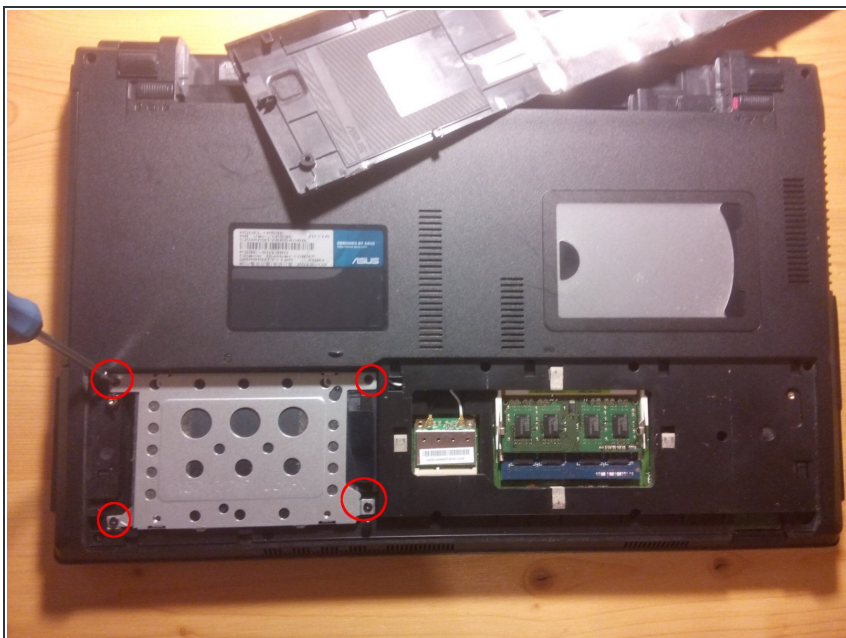
- [Screw Driver](#) (1)
-

## Step 1 — replacement of hard drive or replacement by a SSD



- unscrew these two screws to remove the coverage

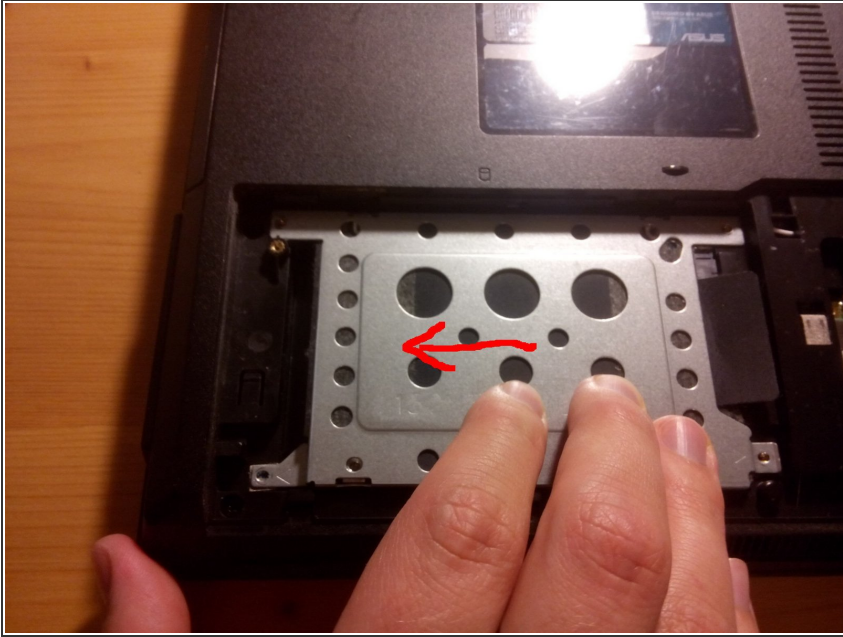
## Step 2



- unscrew these four screws to take out the case with the hard drive disk

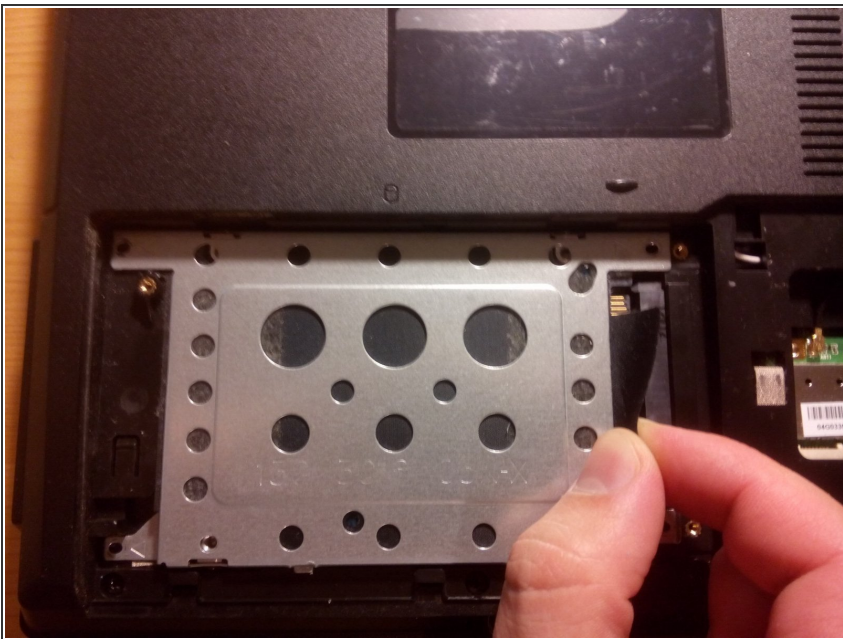


### Step 3



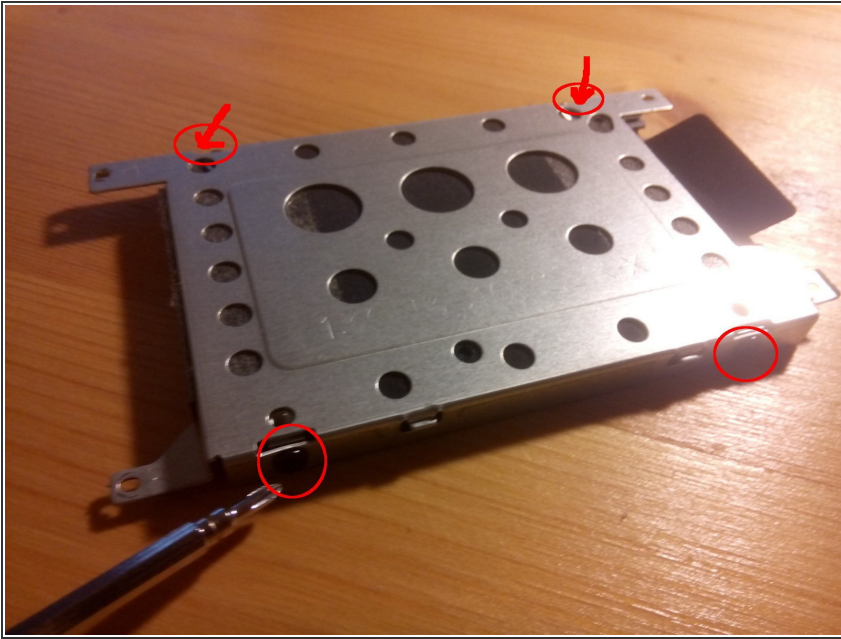
- slip the hard drive to the left

### Step 4



- pull the strap to remove the hard drive's case

## Step 5



- unscrew the four screws of the case to remove the hard drive out of that case

## Step 6



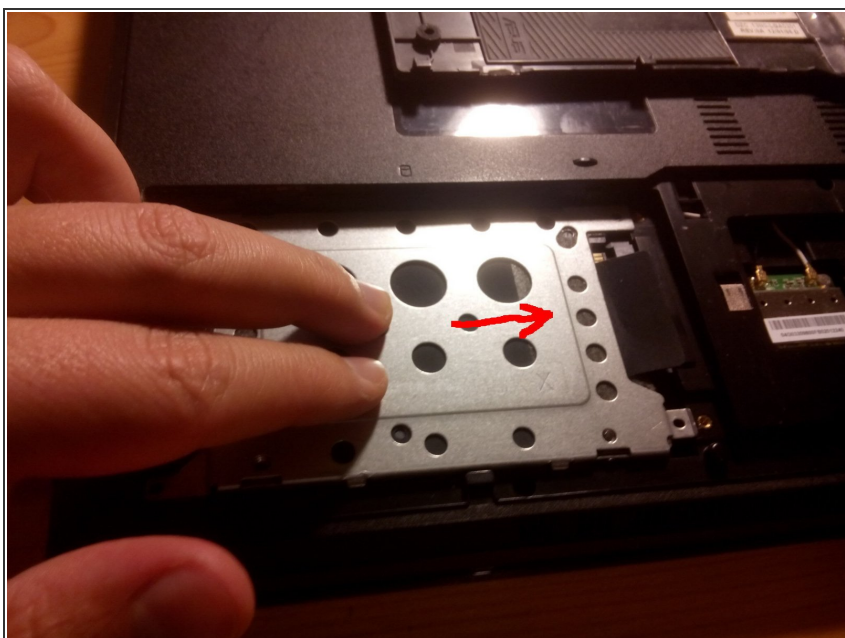
- remove the hard drice from its case

## Step 7



- put the new hard drive or SSD, respectively in the case and fix the screws again (the HDD/SDD will only fit in the case in one way)

## Step 8



- slip the case to the right to plug in the HDD/SDD again



## Step 9



- close the case again

To reassemble your device, follow these instructions in reverse order.