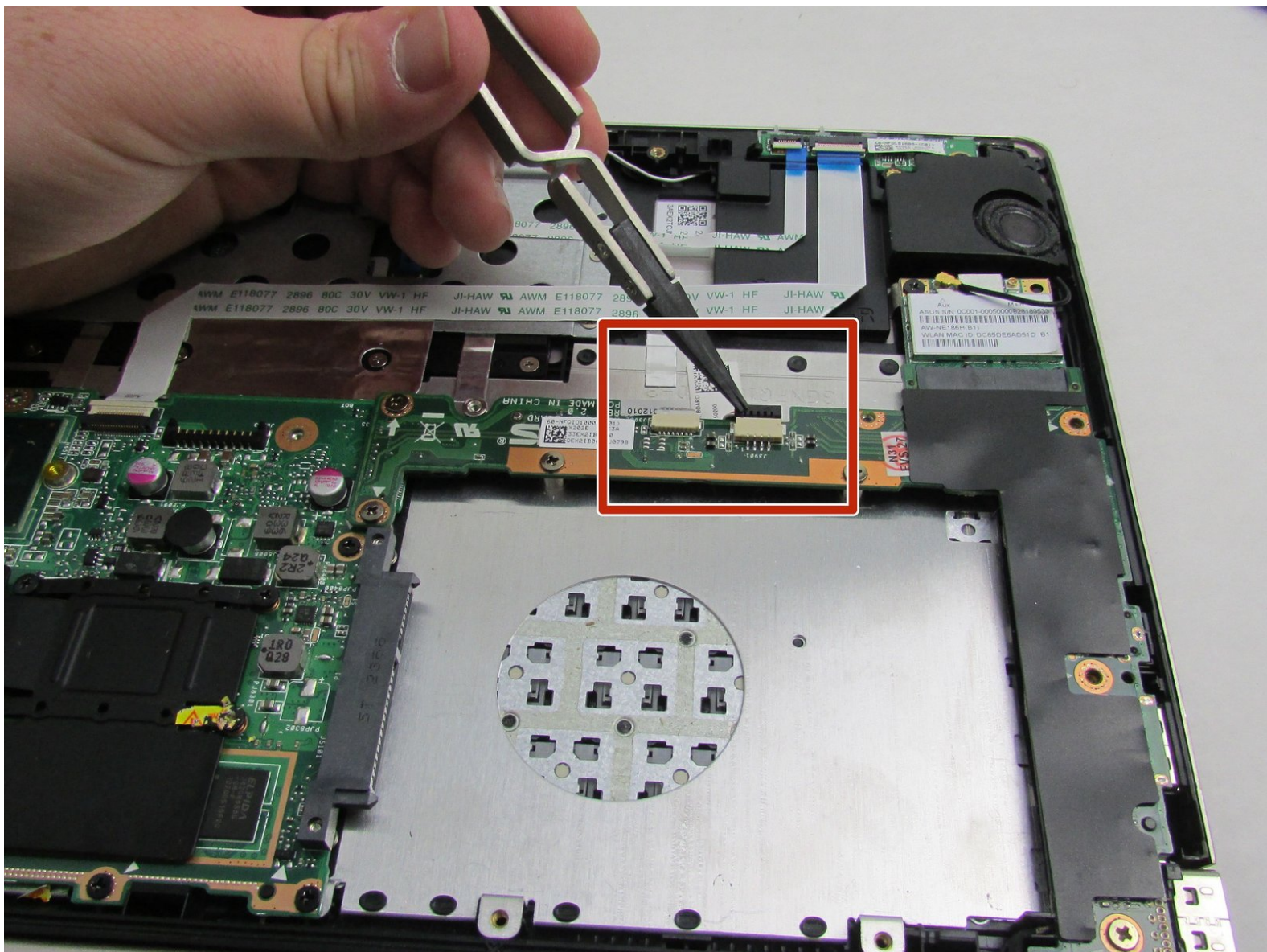




Asus Q200E-CT144H Speaker Replacement

This guide will demonstrate how to remove and replace the speakers on the Asus Q200E-CT144H laptop.

Written By: Kirsti Wattles



INTRODUCTION

If you notice that your laptop's audio transmission is distorted or there isn't any sound coming from the computer altogether, there may be a problem with the speaker. Maybe you've tried everything in your power to troubleshoot the speakers and reached a dead end. In this case you can use this repair guide to help you replace the speakers in the laptop.



TOOLS:

- [iFixit Opening Tools](#) (1)
 - [Phillips #00 Screwdriver](#) (1)
 - [Tweezers](#) (1)
 - [Metal Spudger](#) (1)
-

Step 1 — Back Cover



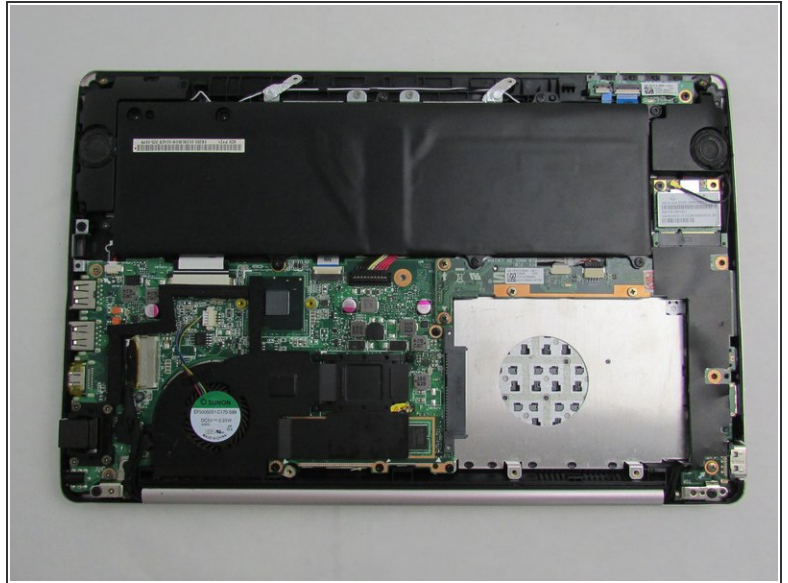
- To start, turn off the laptop and disconnect the power cable.
- ⚠ If the computer is on or plugged in, it could cause electric shock.
- Flip the laptop over so the back panel is visible.

Step 2



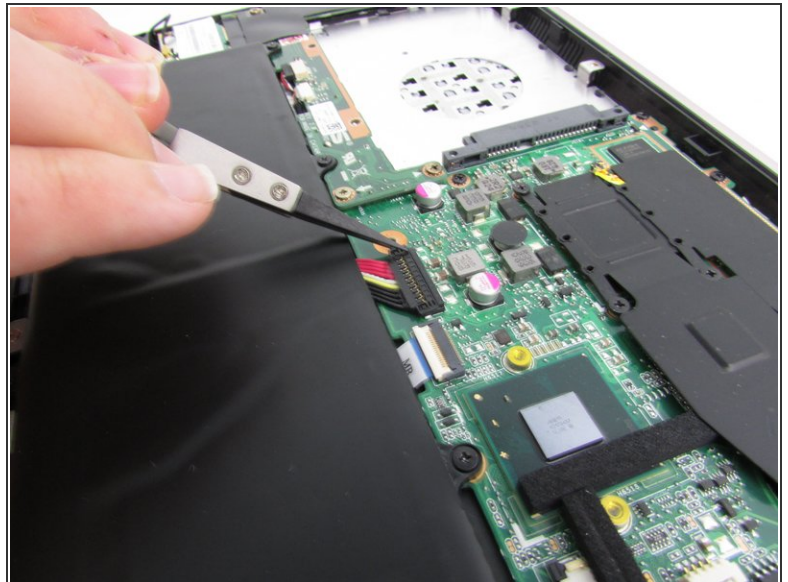
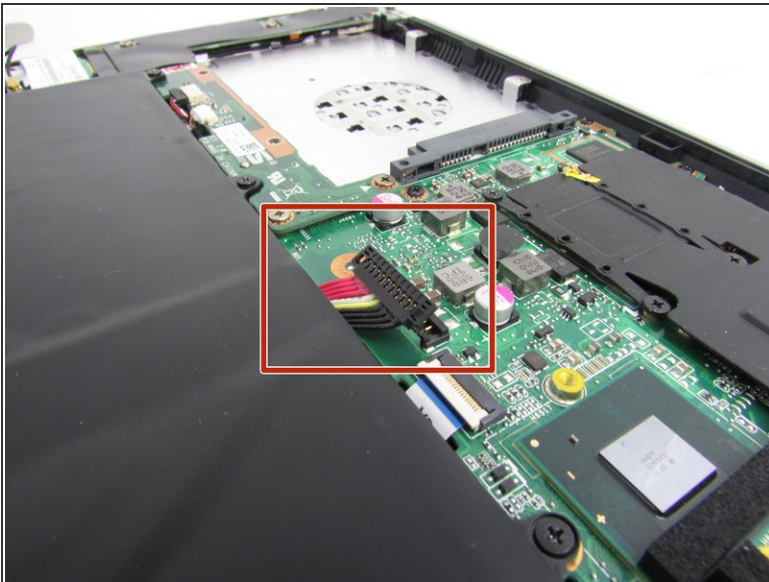
- Remove the 9 screws holding the cover in place by taking a Phillips #00 Screwdriver and turning it counterclockwise.

Step 3



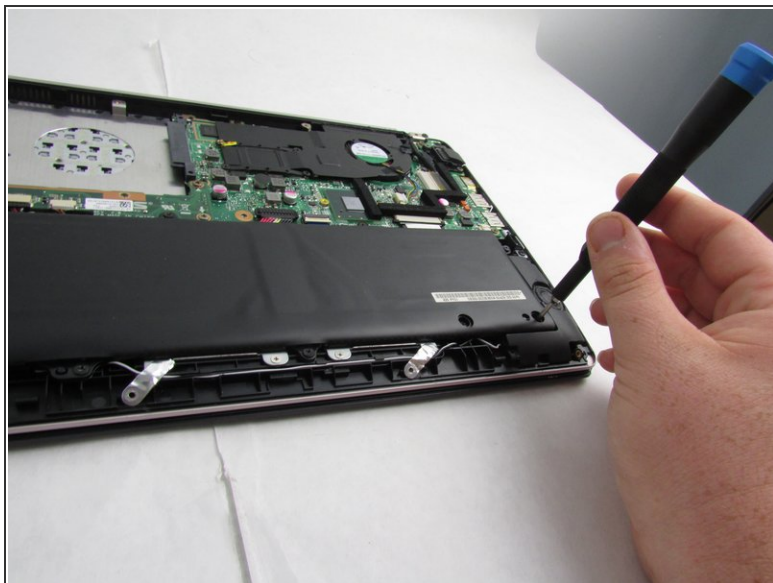
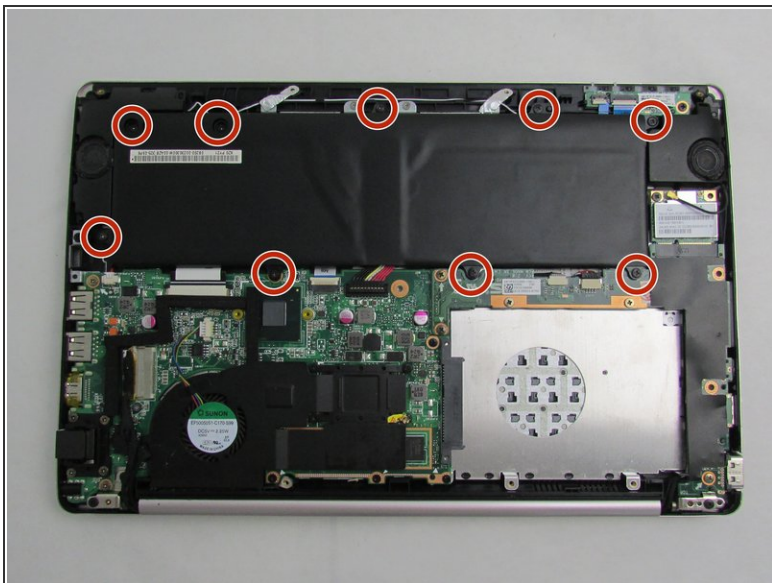
- Use an iFixit opening tool to lift the back cover and remove it from the laptop.

Step 4 — Battery



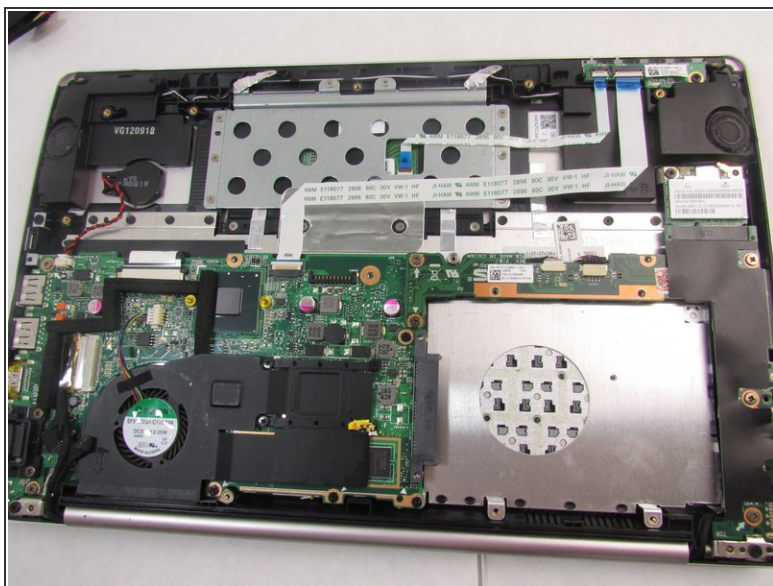
- Remove the battery connector by using tweezers to lift up on it.

Step 5



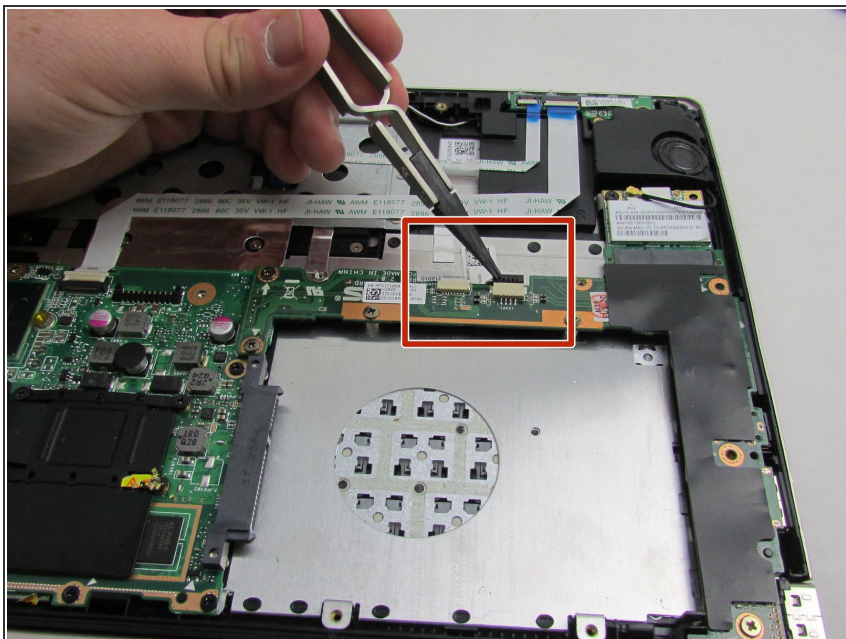
- Remove the nine Phillips #00 screws that hold the battery in place.
- ⓘ There is one 9.2mm screw, four 4.7mm screws, and four 5.7mm screws.

Step 6



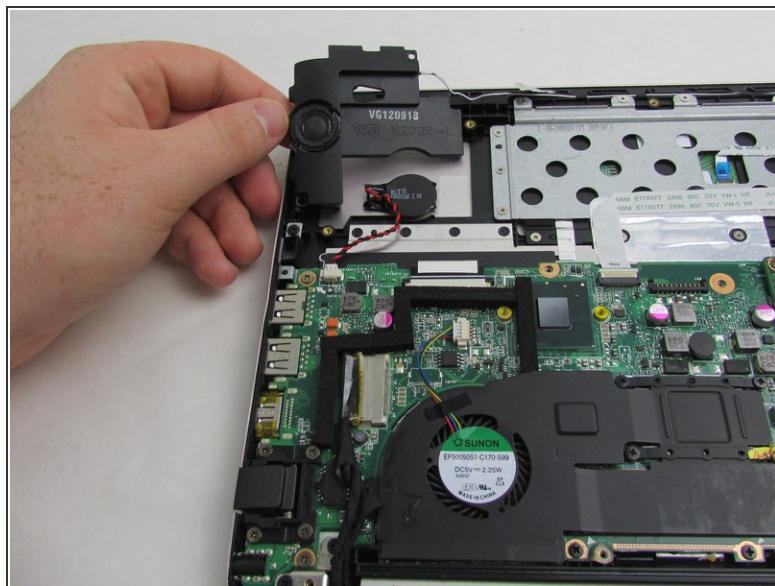
- Remove the battery from the battery bay.

Step 7 — Speaker



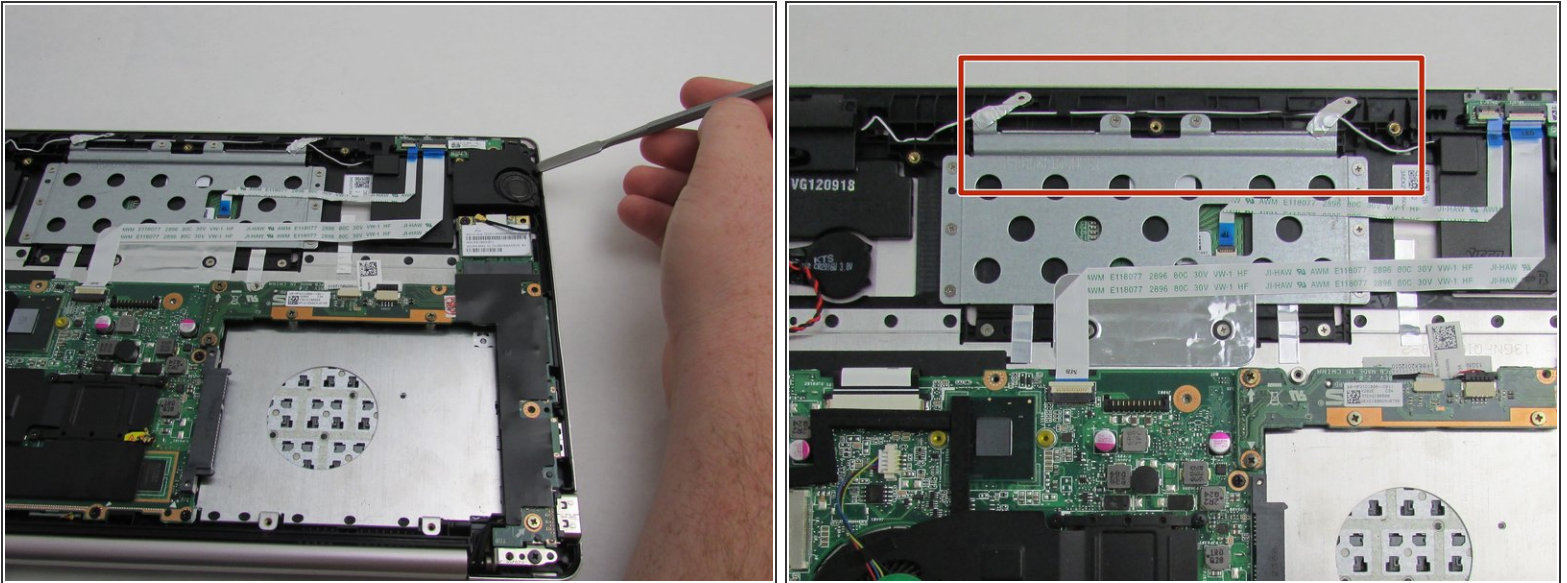
- Use tweezers to disconnect the speaker's main power connectors.

Step 8



- Use a metal spudger to pry the speaker housing from the laptop.
- ⓘ There will be glue holding the speaker housing to the laptop.

Step 9



- Remove the right speaker from its housing.
- ⓘ There will be glue holding the speaker housing to the laptop.
- Use tweezers to remove the black and white wire from its groove.
- ⓘ The black and white wire connects the speaker housings together.

To reassemble your device, follow these instructions in reverse order.