



Asus Q200E-CT144H Wi-Fi Card Replacement

This guide will demonstrate how to replace the Wi-Fi card in the Asus Q200E-CT144H laptop.

Written By: Kirsti Wattles



This document was generated on 2020-01-11 10:32:04 AM (MST).

INTRODUCTION

The Wi-Fi Card is responsible for transmitting data the same way a cell phone or radio does, through radio waves. Your Wi-Fi Card should be able to pick up a signal from the nearby radios using its tiny antennas. If you are having problems with connecting to the internet using your Wi-Fi Card also known as the Local Area Network Card (LAN), you can use this guide to replace your Wi-Fi Card.



TOOLS:

- [iFixit Opening Tools](#) (1)
 - [Tweezers](#) (1)
 - [Phillips #00 Screwdriver](#) (1)
-

Step 1 — Back Cover



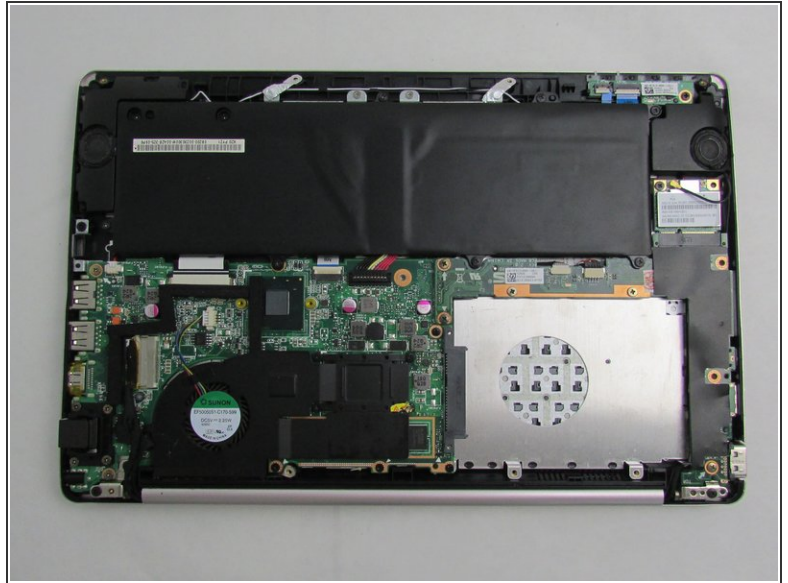
- To start, turn off the laptop and disconnect the power cable.
- ⚠ If the computer is on or plugged in, it could cause electric shock.
- Flip the laptop over so the back panel is visible.

Step 2



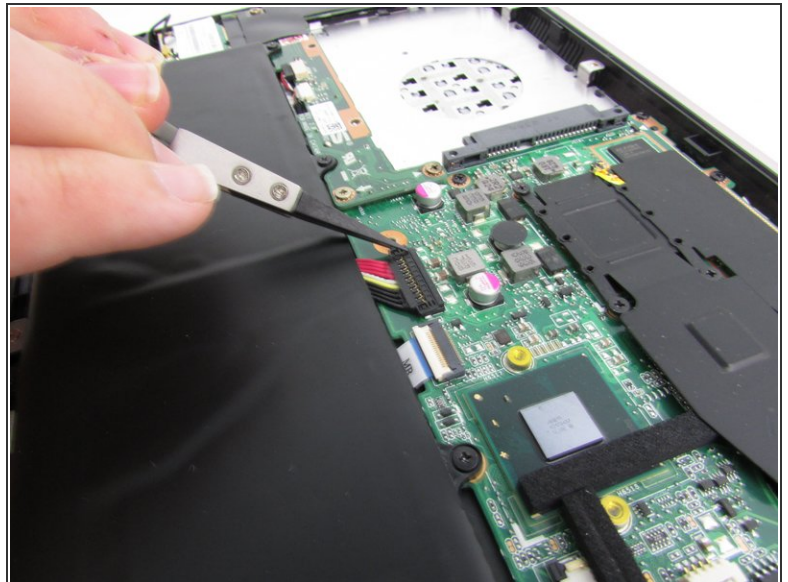
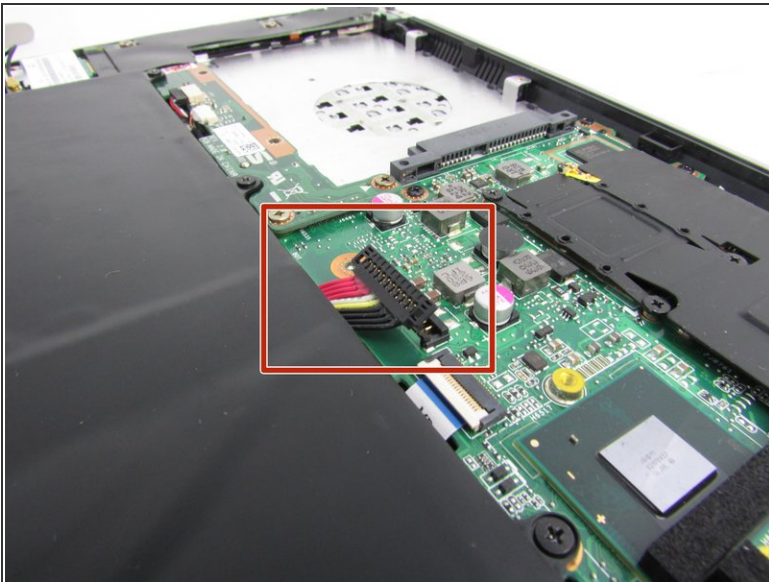
- Remove the 9 screws holding the cover in place by taking a Phillips #00 Screwdriver and turning it counterclockwise.

Step 3



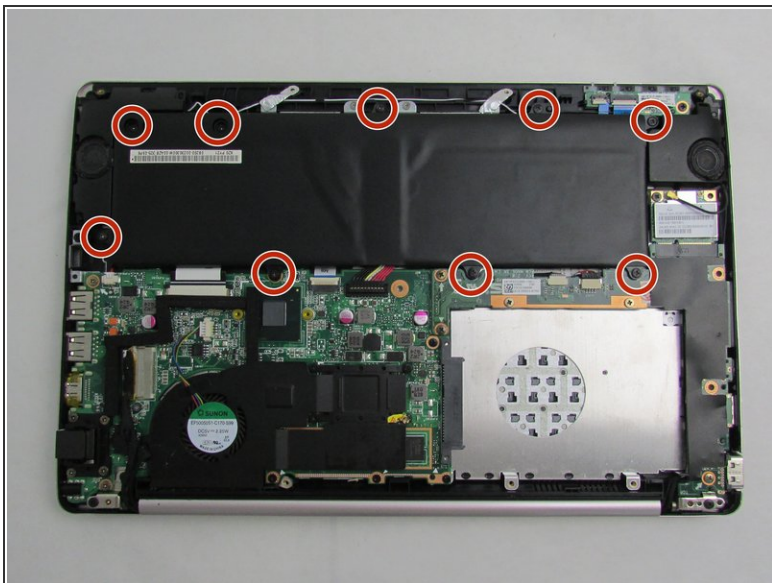
- Use an iFixit opening tool to lift the back cover and remove it from the laptop.

Step 4 — Battery



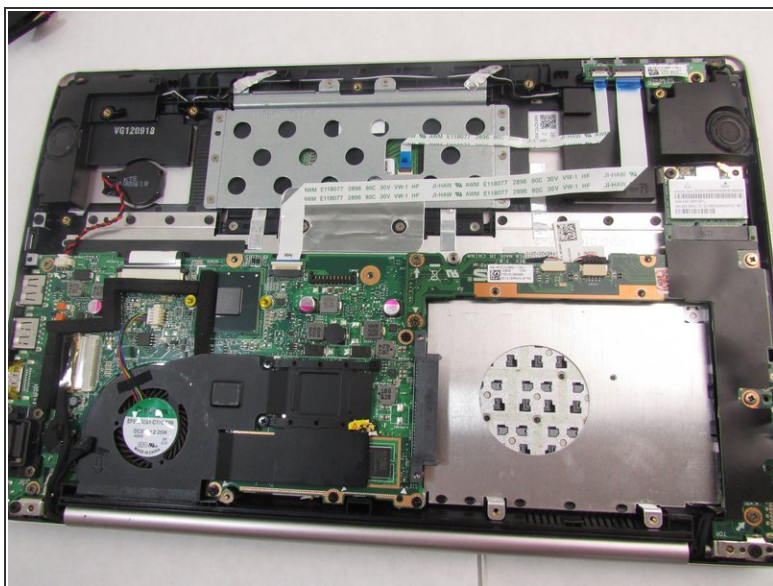
- Remove the battery connector by using tweezers to lift up on it.

Step 5



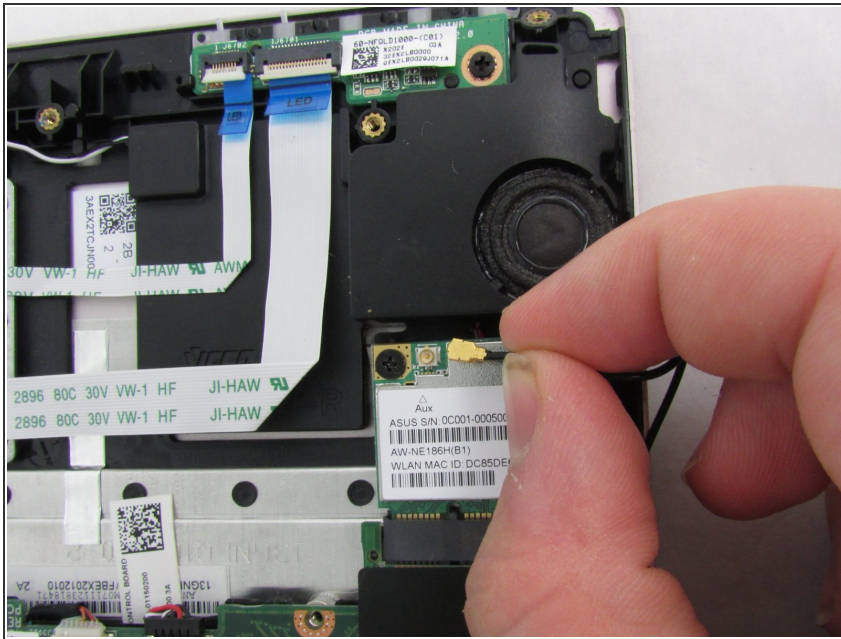
- Remove the nine Phillips #00 screws that hold the battery in place.
- ⓘ There is one 9.2mm screw, four 4.7mm screws, and four 5.7mm screws.

Step 6



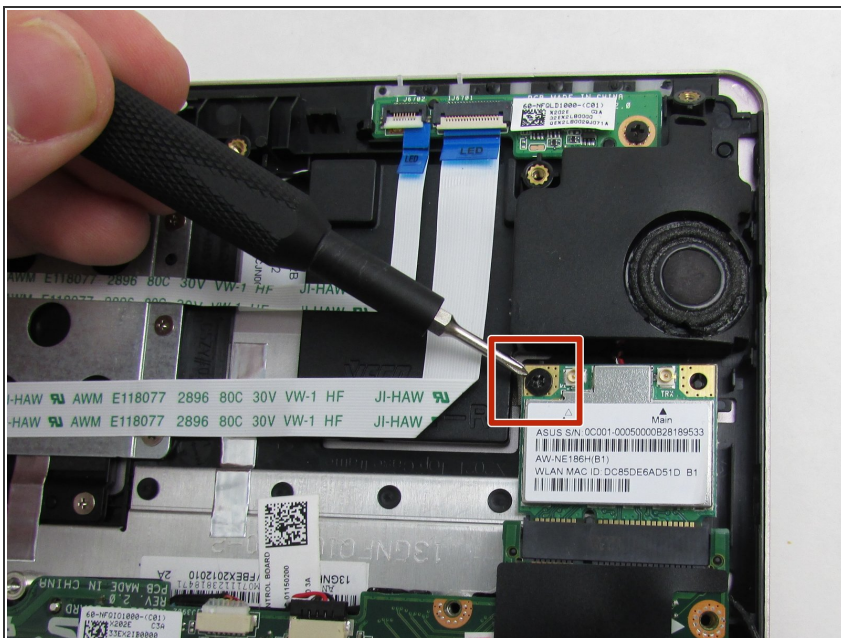
- Remove the battery from the battery bay.

Step 7 — Wi-Fi Card



- Use tweezers or your fingers to disconnect the Wi-Fi card's power connector.

Step 8



- Unscrew the single 4.7mm screw with a Phillips #00 screwdriver.

Step 9



- Remove the card from its bay.

To reassemble your device, follow these instructions in reverse order.