



Asus Q302UA-BHI5T20 Wireless Card Replacement

How to replace a Asus Q302UA-BHI5T20 wireless card.

Written By: Houston Koontz



INTRODUCTION

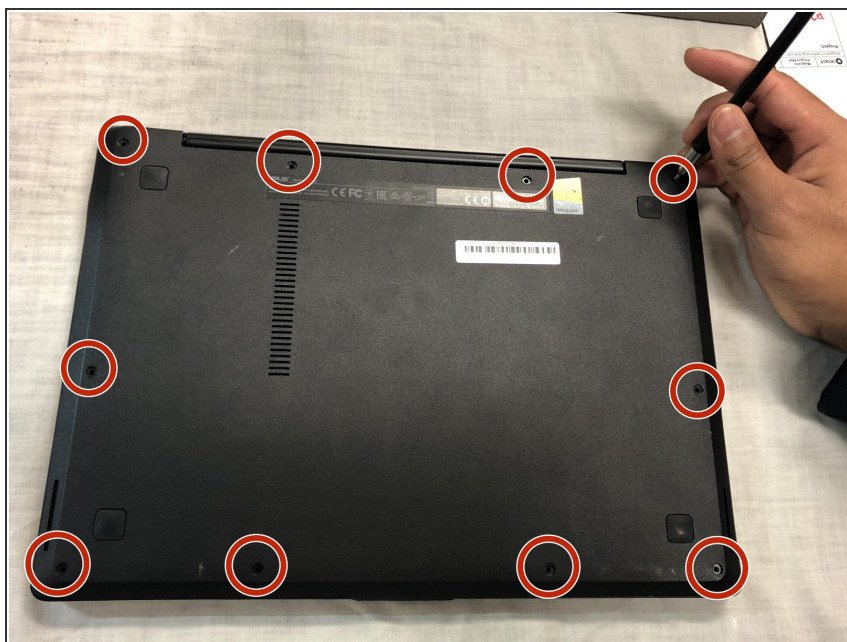
This guide will help you replace the wireless card in case you are upgrading or component failure. Be sure to follow this guide in a well lit room on a flat surface. Acquire the necessary tools before hand and have a cup or a magnetic plate to keep track of all the screws.



TOOLS:

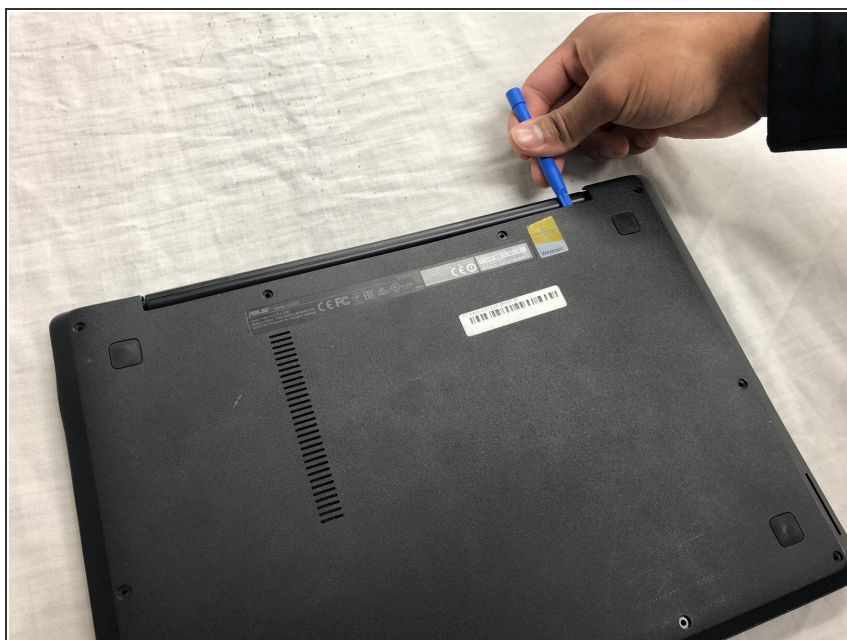
- [Phillips #0 Screwdriver](#) (1)
 - [iFixit Opening Tools](#) (1)
-

Step 1 — Wireless Card



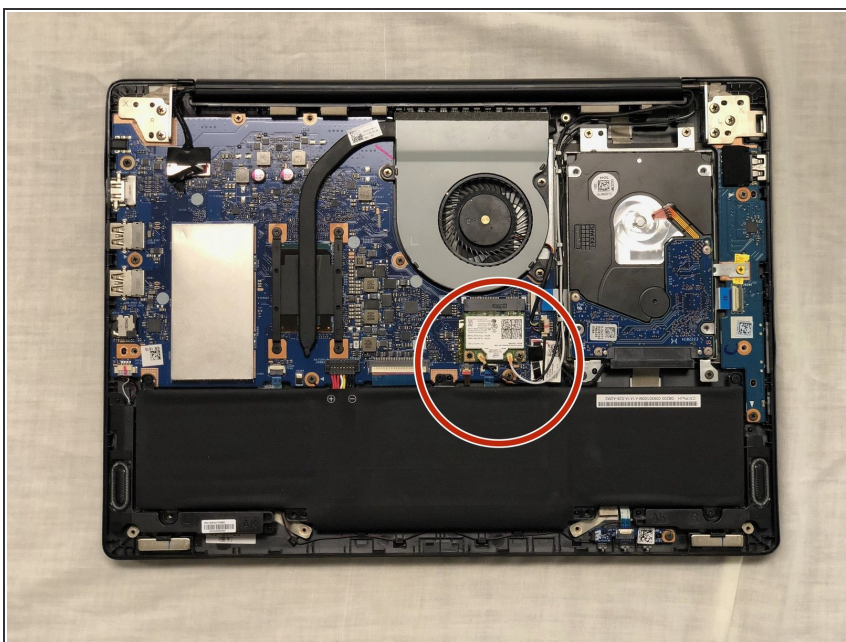
- Remove the ten 10mm Phillips #0 screws on the back of the laptop.

Step 2



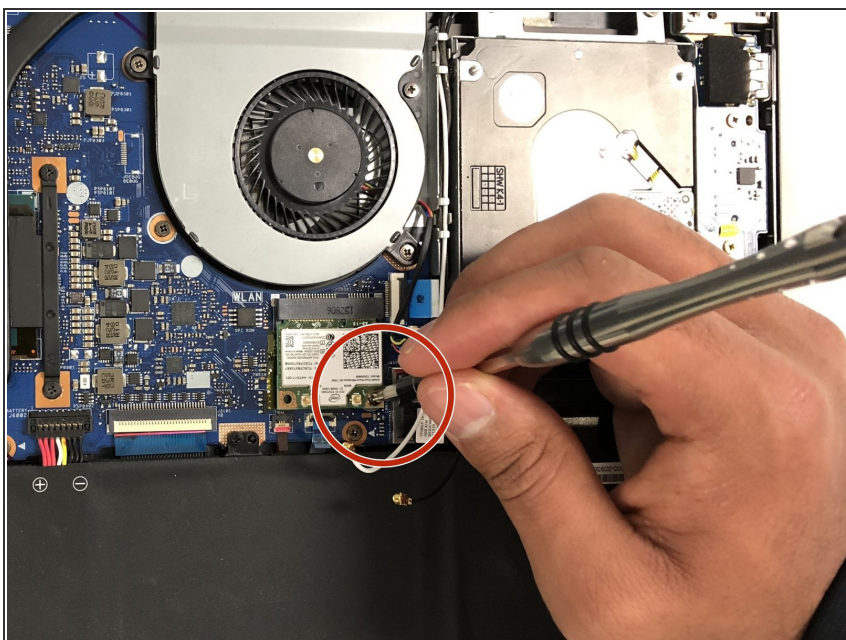
- Use the iFixit opening tool along the edge of the laptop to pry open the back.

Step 3



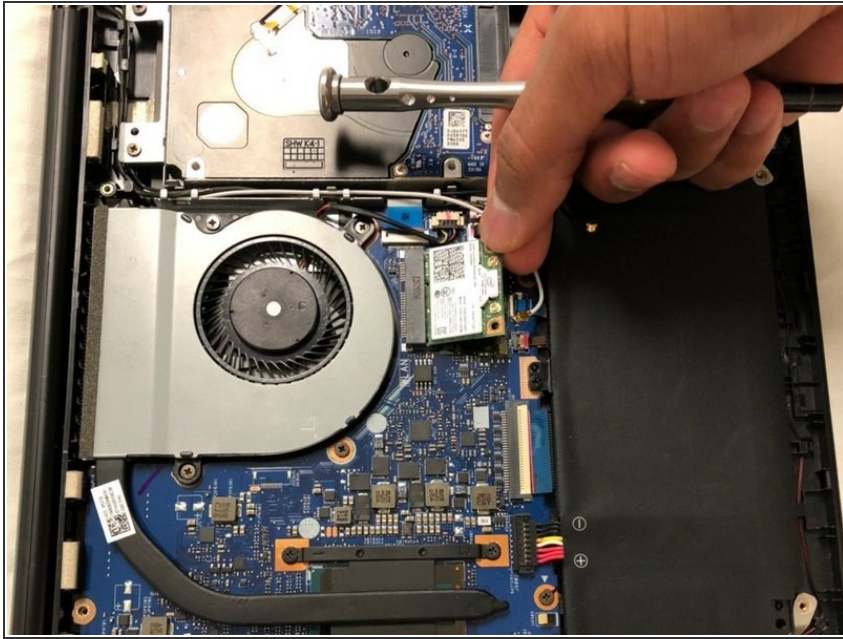
- Remember the position of the wires. You will then pull off the two wires connected to the wireless card.

Step 4



- Remove the screw holding down the wireless card.
- ⓘ After the screw disconnects the card "jumps up" a little.

Step 5



- Pull the wireless card out of its socket.

To reassemble your device, follow these instructions in reverse order.