



# Asus Q304UA Hard Drive Replacement

This guide will show you how to replace the hard drive on your Asus laptop.

Written By: Ben Meinhart





## TOOLS:

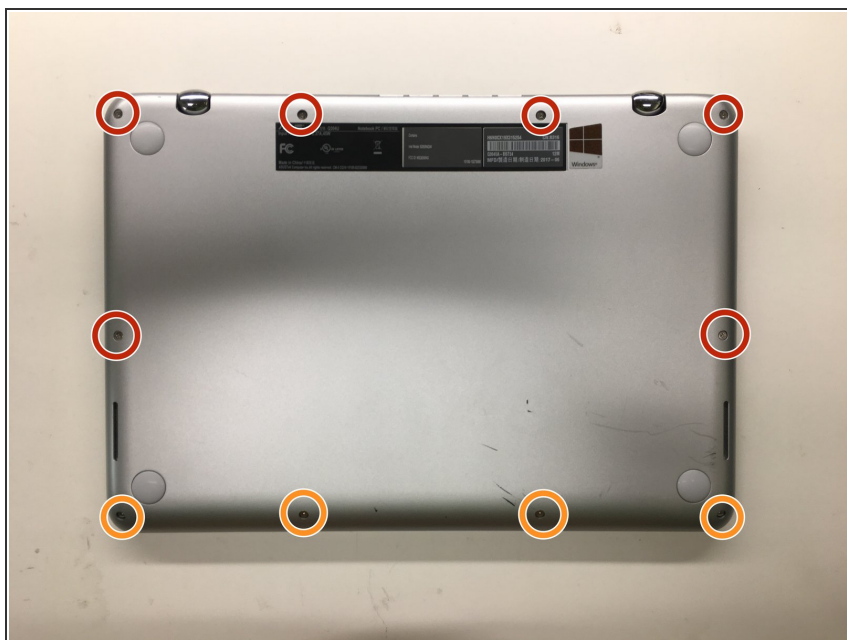
- [Spudger](#) (1)
- [iFixit Opening Picks set of 6](#) (1)
- [Phillips #0 Screwdriver](#) (1)



## PARTS:

- [1 TB SSD / Upgrade Bundle](#) (1)
- [250 GB SSD / Upgrade Bundle](#) (1)
- [500 GB SSD / Upgrade Bundle](#) (1)
- [2 TB SSD / Upgrade Bundle](#) (1)

## Step 1 — Remove Bottom Cover



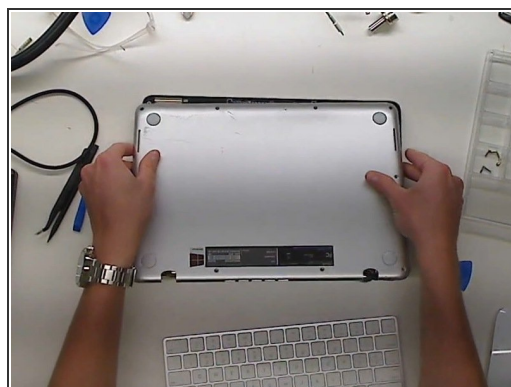
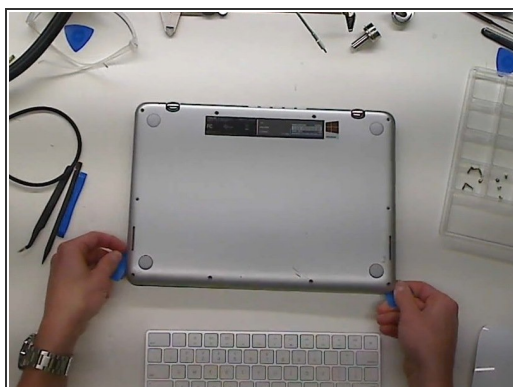
- Remove ten Phillips #0 screws that secure the plastic bottom cover to the chassis.

- Six 9.6 mm screws

- Four 4.6 mm screws

- ☑ Throughout this guide, keep careful track of your screws so that each one goes back where it came from during reassembly. Installing a screw in the wrong place can cause permanent damage.

## Step 2



- Use a plastic pry tool to get in-between the bottom cover and the lower case assembly.

⚠ Be careful not separate the cover too violently or you will risk breaking the plastic clips that are on the bottom cover.



### Step 3 — Disconnect the battery

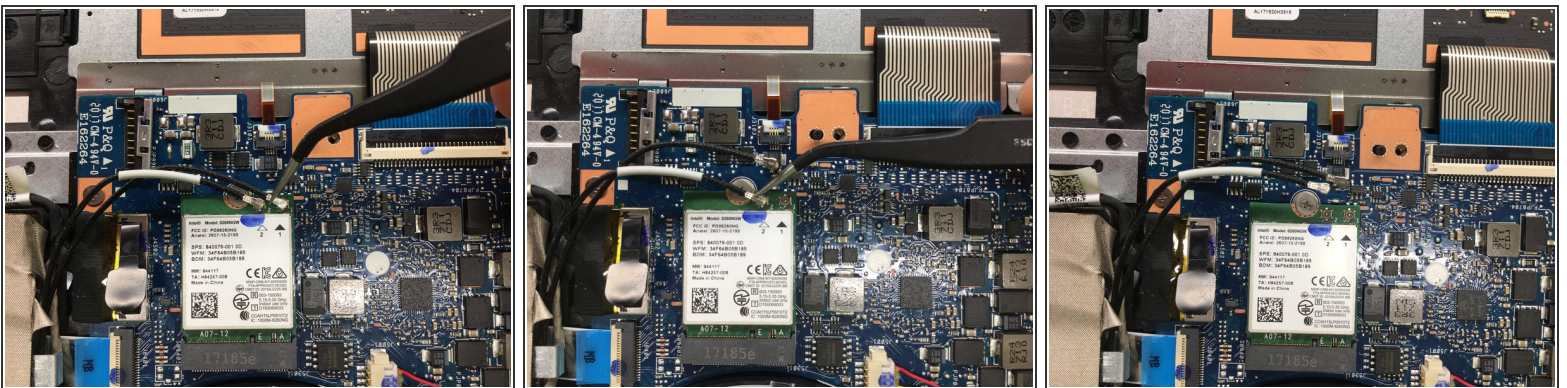


- Push metal bracket away from battery connector.
- Use a spudger to push the battery connection straight up.

⚠ If you pry too hard, or attempt to disconnect the battery with the metal bracket still in place, you risk pulling the connector off of the motherboard.

☑ Make sure the computer is powered off before removing the battery.

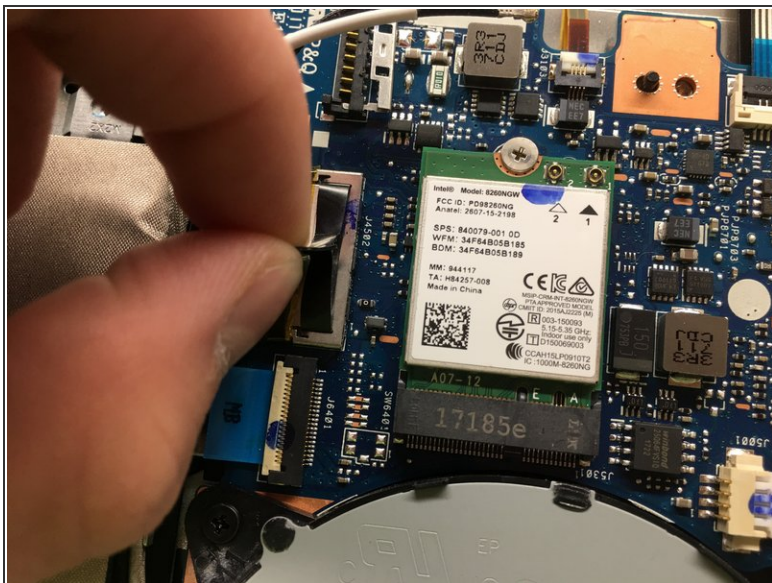
### Step 4 — Disconnect RF Cables



- Disconnect the Wifi/Bluetooth RF cables from the wireless card.
- Pull the RF cables by the metal connector, not by the rubber shielding. This avoids damaging the connector and the cable.

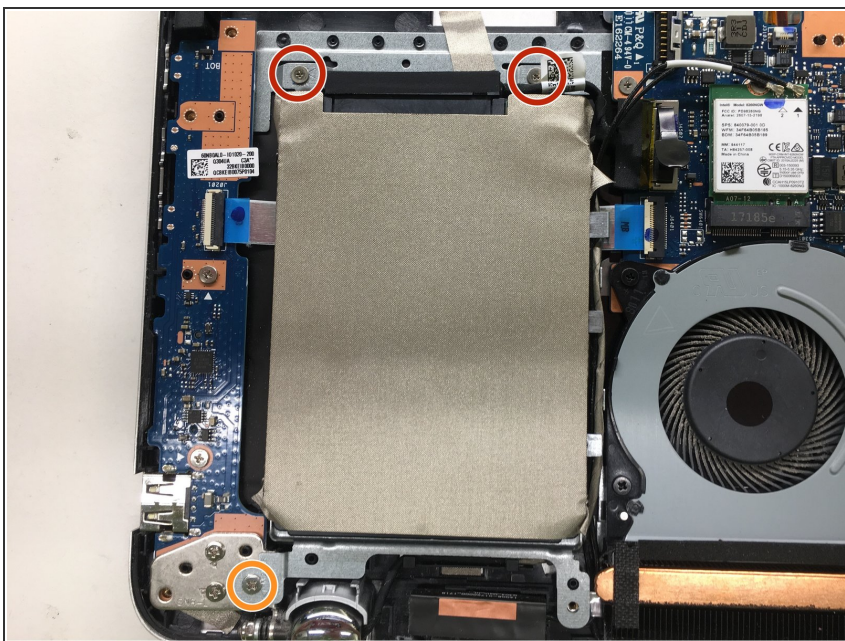


## Step 5 — Hard Drive Assembly



- Pull straight up to disconnect the SATA combo cable from the motherboard.

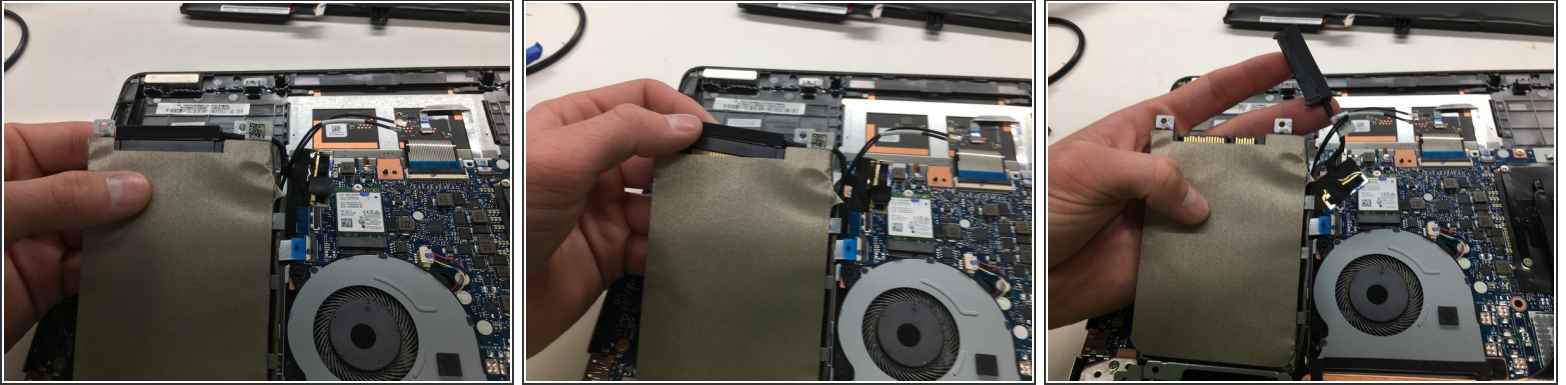
## Step 6



- Remove three Phillips #0 that secure the hard drive bracket to the chassis, of the following lengths:
  - Two 2.3 mm screws
  - One 5.6 mm screw

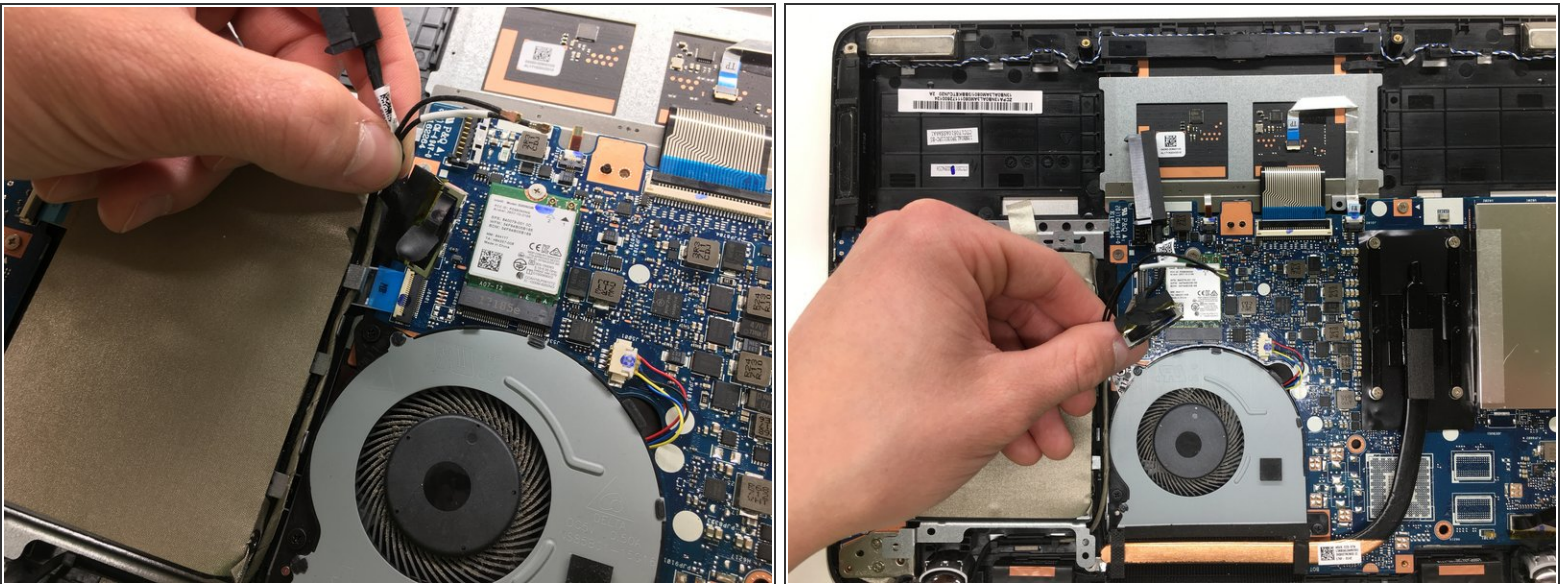


## Step 7



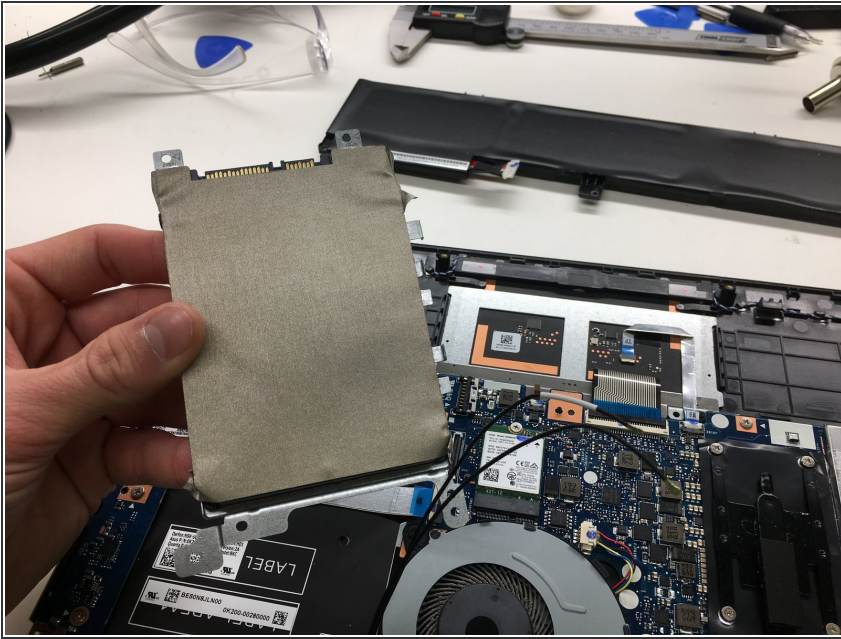
- Tilt the drive up slightly by the connector
- Remove the SATA combo connector

## Step 8



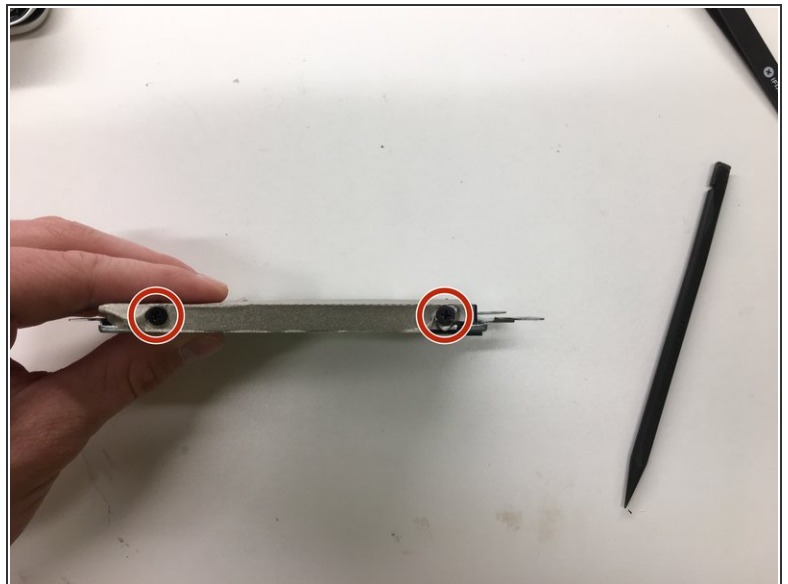
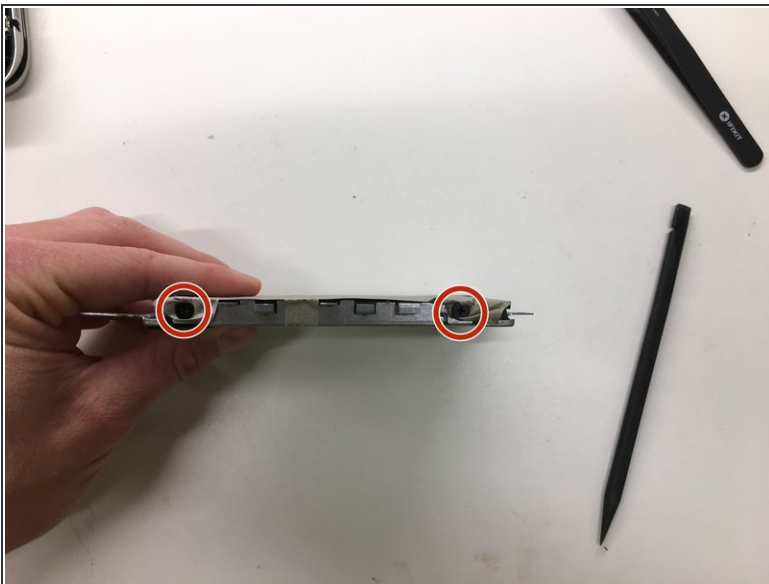
- De-route the SATA and RF cables from the side of the drive bay.

## Step 9



- Insert wisdom here.

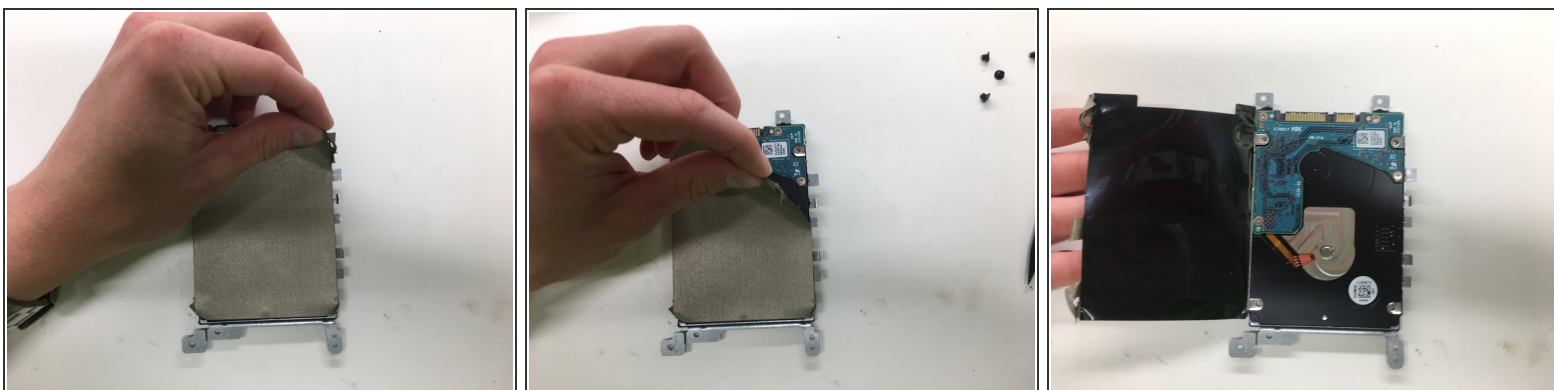
## Step 10 — Hard Drive Bracket Assembly




- Remove the four Phillips #0 screws that secure the hard drive to the hard drive bracket.
  - Four 3.7 mm screws



## Step 11



- Peel back thermal cover.

 Be careful not to tear the cover on the side of the drive as you peel it off.

## Step 12



- Remove drive from hard drive bracket.

To reassemble your device, follow these instructions in reverse order.