



Asus Q501LA-BBI6T03 Wireless Card Replacement

If you are having trouble connecting to the internet and find that your wireless card is faulty, this guide will help you replace it.

Written By: Aodhan Arias



INTRODUCTION

If you are having difficulties connecting to the internet and find that your wireless card is affecting your connectivity, this guide will help you in replacing the wireless-n card.



TOOLS:

- [Phillips #0 Screwdriver](#) (1)
- [iFixit Opening Tools](#) (1)




PARTS:

- [Asus Q501LA-BBI5T03 Wireless-n Card](#) (1)

Step 1 — Back Panel



 Ensure the laptop is powered down before continuing.

- Use a Phillips #0 screwdriver to remove the ten 3mm Phillips head screws on the base of the laptop.

Step 2



- Use the spudger to pry open the rear cover at either hinge.

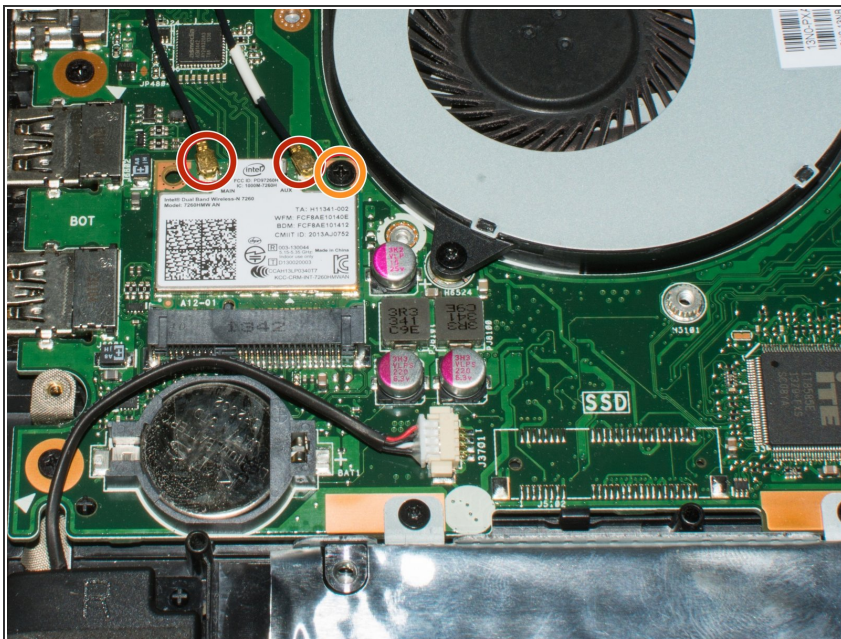
Step 3



- Grab the cover with your fingers and gently lift it away from the board.

i Be careful not to break any tabs on the cover when lifting it off.

Step 4 — Wireless Card



- Pull up on the two metal tabs attached to the card .
- Unscrew the single 2mm Phillips #0 screw in the top right hand corner.

Step 5



- Gently slide the card out of its connection ports.
- ⚠ Make sure to pull straight out of the connection ports to avoid bending of the card or port.

Once finished, follow prerequisite guide in reverse order to finish your repair.