



Asus Q503UA-BSI5T17 Hard Drive Removal

This guide will show you how to remove the hard drive in an Asus Q503UA.

Written By: Orlando Garcia



INTRODUCTION

The ASUS Q503UA-BSI5T17 is a 2 in 1 portable PC with a 15.6-inch scree. The device's design is a sleek black look with rubber feel to it. The ASUS logo on the top of the device glows white. This guide will show a step-by-step process on removing the hard drive. Removing the hard drive ensures that your data is safe and secure, thus allowing you to repair any other components.



TOOLS:

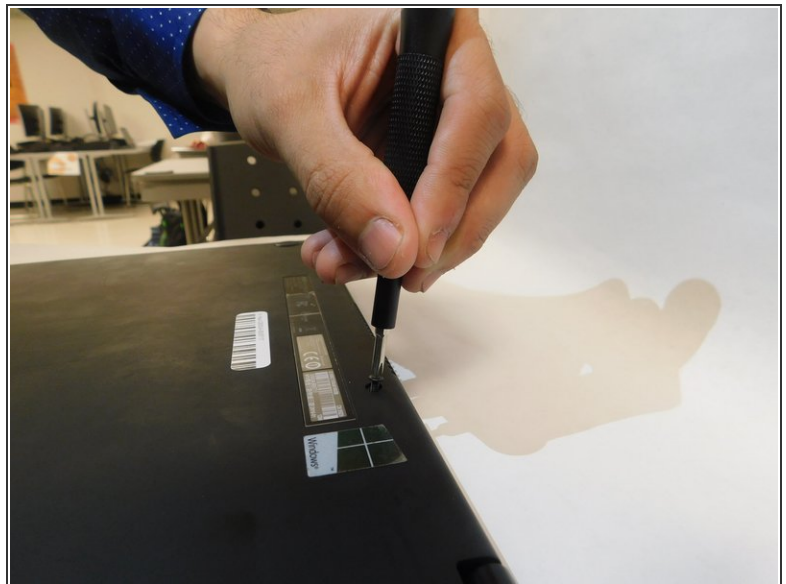
- [iFixit Opening Tools](#) (1)
 - [iFixit Opening Picks set of 6](#) (1)
 - [Phillips #0 Screwdriver](#) (1)
 - [Magnetic Project Mat](#) (1)
-

Step 1 — Cover



- Flip over the computer. In order to ensure that the correct side is up, you should be able to legibly read the stickers that indicate the model number and other information.

Step 2



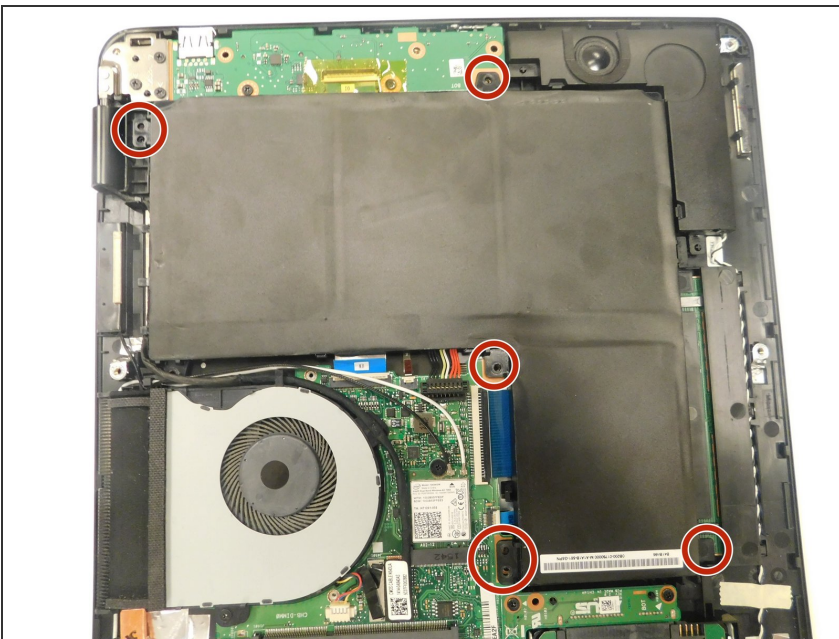
- Remove the ten screws from the back case with a Phillips #0 screwdriver.

Step 3



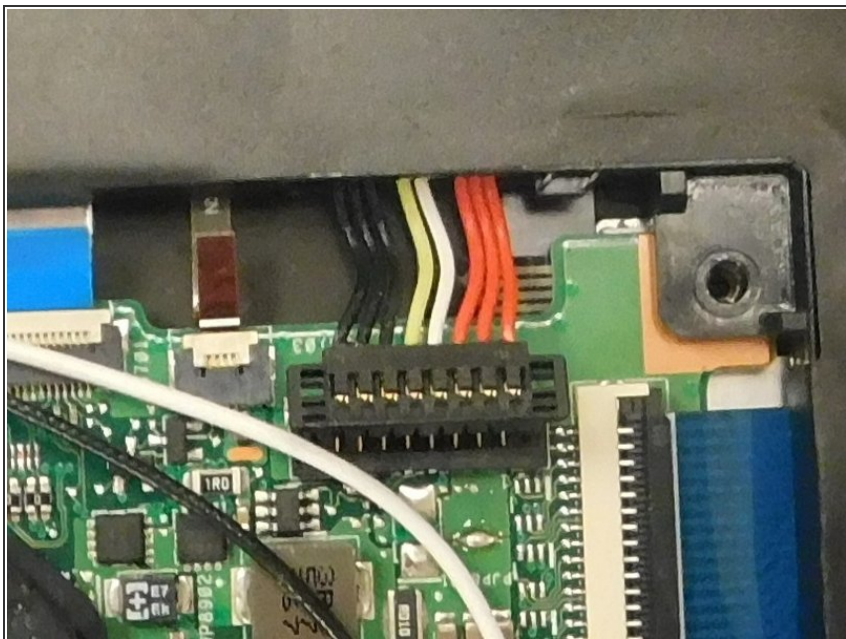
- Use a plastic opening tool to pry the frame upwards towards you, starting from the top right corner.
- i** You should feel it coming loose. If necessary, use spacers to keep the frame from locking back into place.
- Continue prying all around the frame.
- Remove the back cover.

Step 4 — Battery



- Remove the five screws holding the battery in place using a Phillips #0 screwdriver.
- !** Screw locations are approximate. If you find screws to be located elsewhere, please [update this step](#) with their correct locations.

Step 5



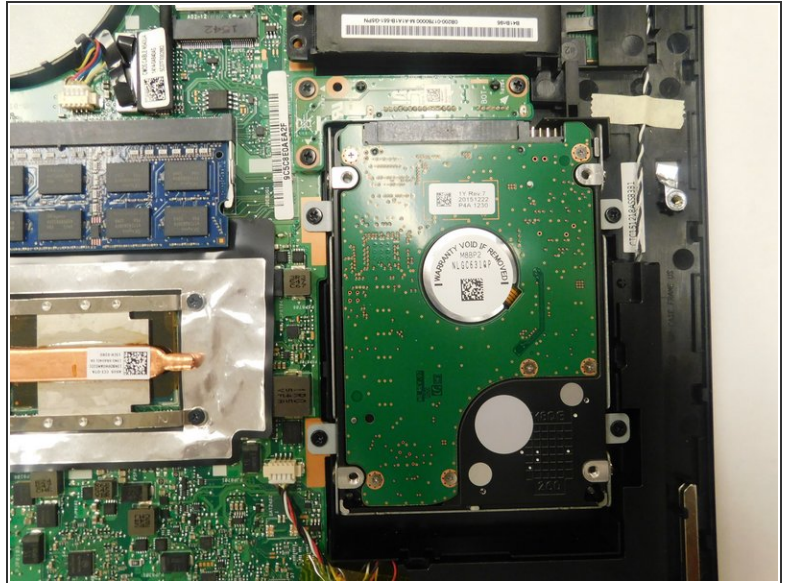
- Disconnect the battery connection.

Step 6



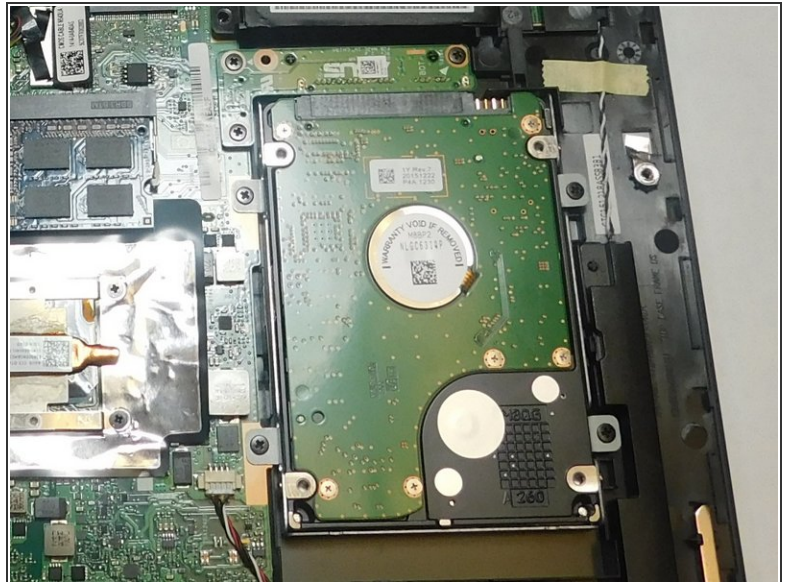
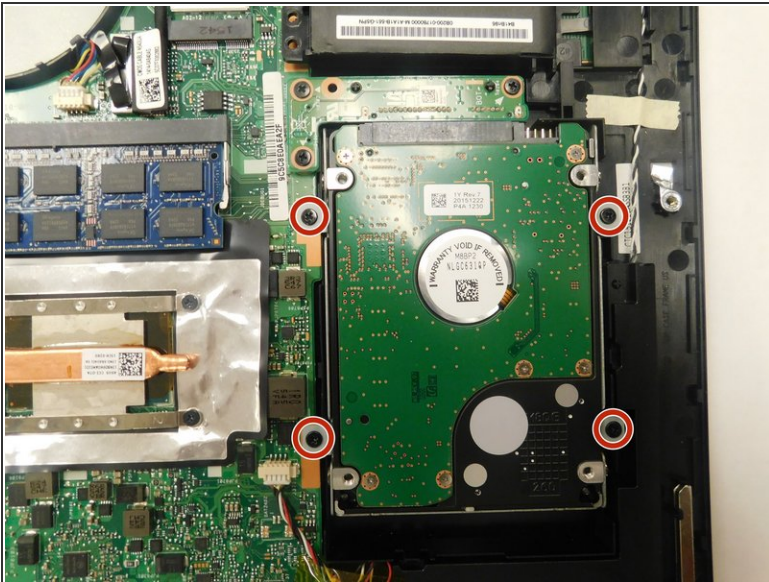
- Grab and lift the battery from the top right-hand side.
- ① If all screws are removed, it should come out with no struggle at all.

Step 7 — Hard Drive



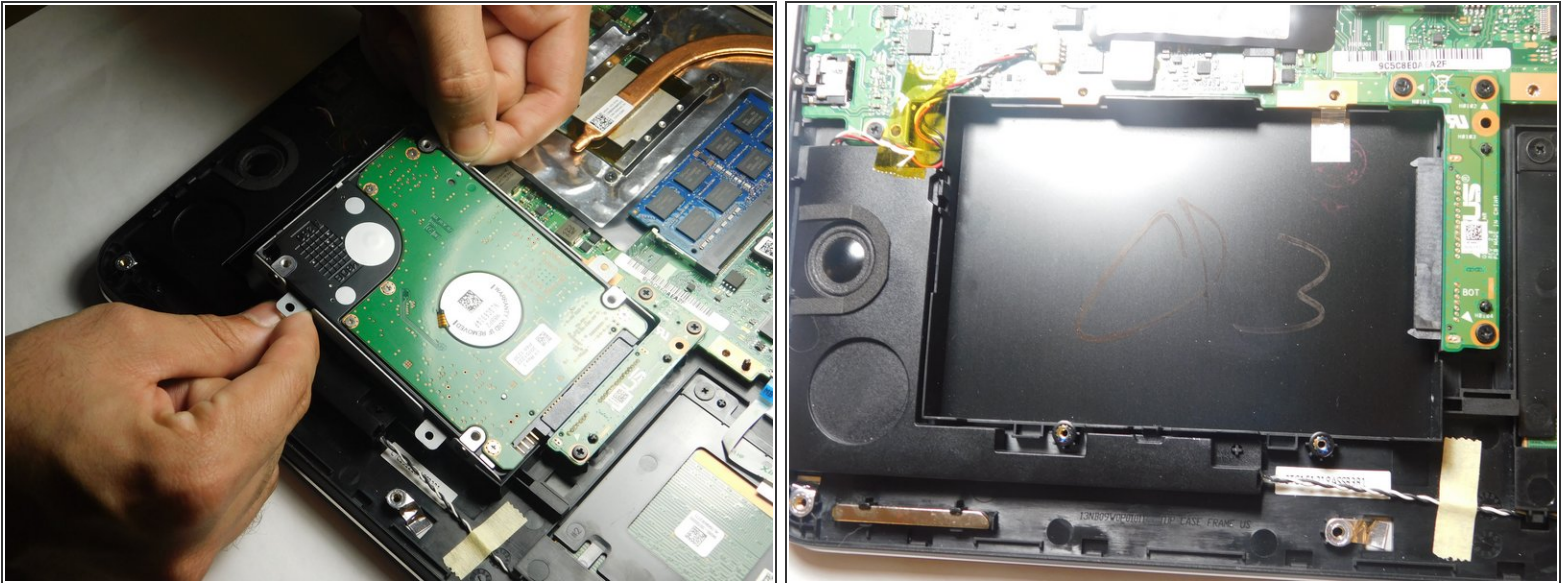
- Once you opened the laptop, the hard drive is located on the bottom right from where the battery is.

Step 8



- Use a Phillips #0 screwdriver to unscrew the four screws surrounding the hard drive.

Step 9



- Disconnect the cable that is connected to the hard drive by lifting the edge slightly and sliding it horizontally away from the connector.
- Remove the hard drive.
- ⓘ You may need to further remove the metal mounting brackets from your old hard drive then install them on your new hard drive before reinstallation.

To reassemble your device, follow these instructions in reverse order.