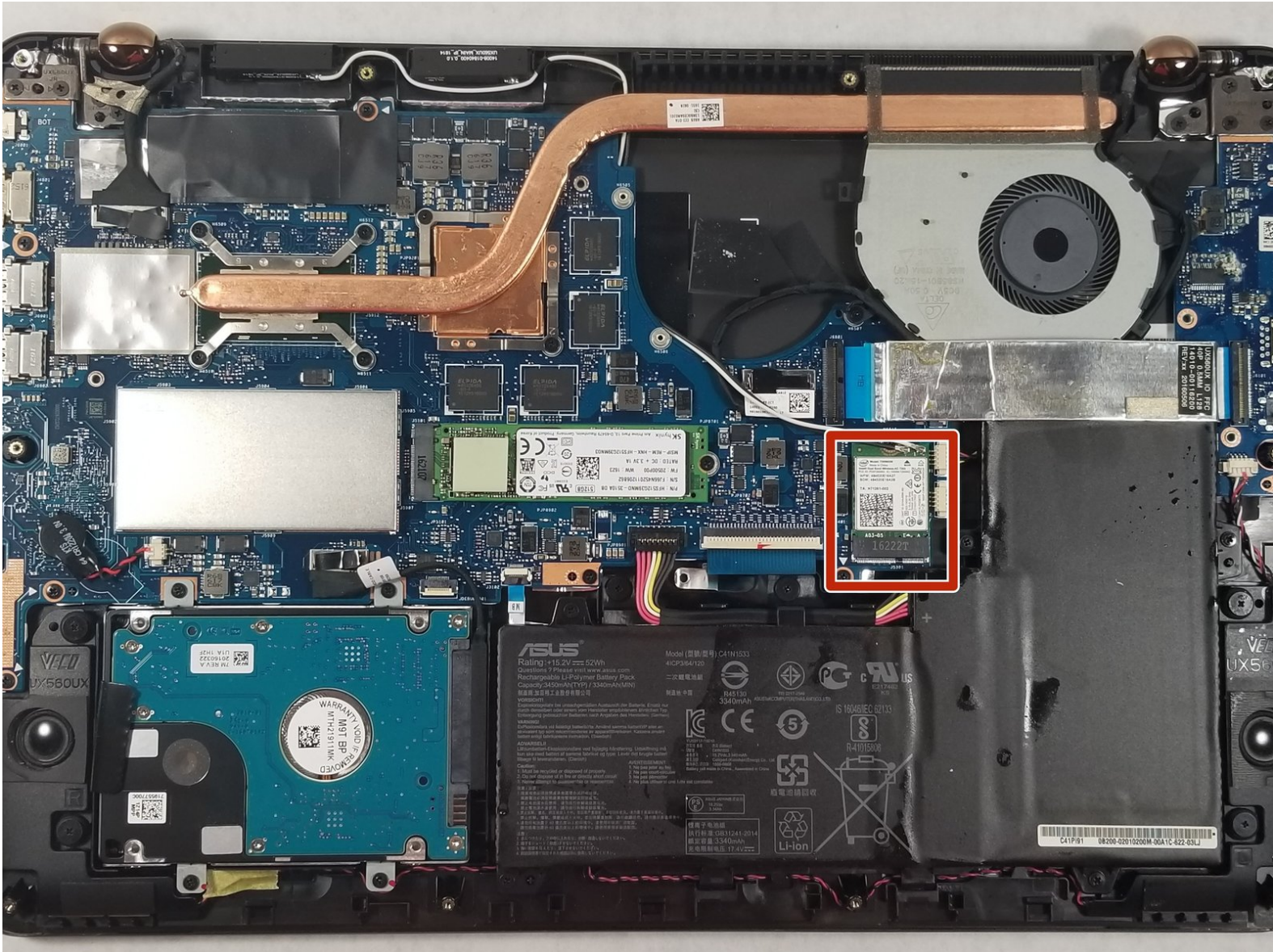




Asus Q534U Wi-fi card Replacement

This guide will take you through the steps needed to replace a damaged Wi-Fi card

Written By: Eric Okoko





TOOLS:

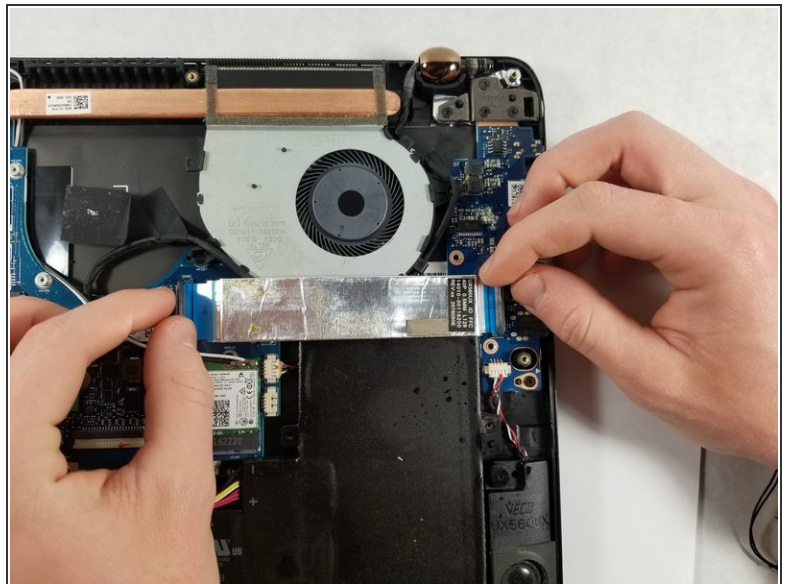
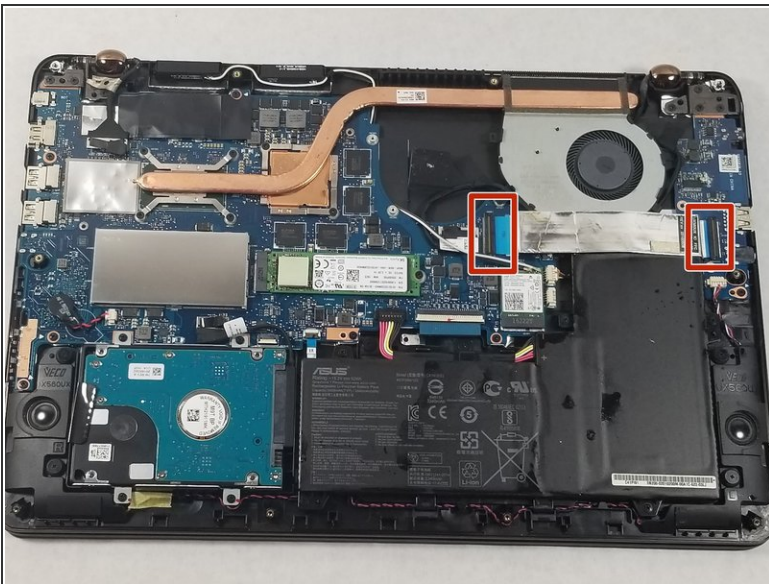
- [iFixit Opening Tools](#) (1)
- [Phillips #00 Screwdriver](#) (1)
- [T5 Torx Screwdriver](#) (1)

Step 1 — Back Case Removal



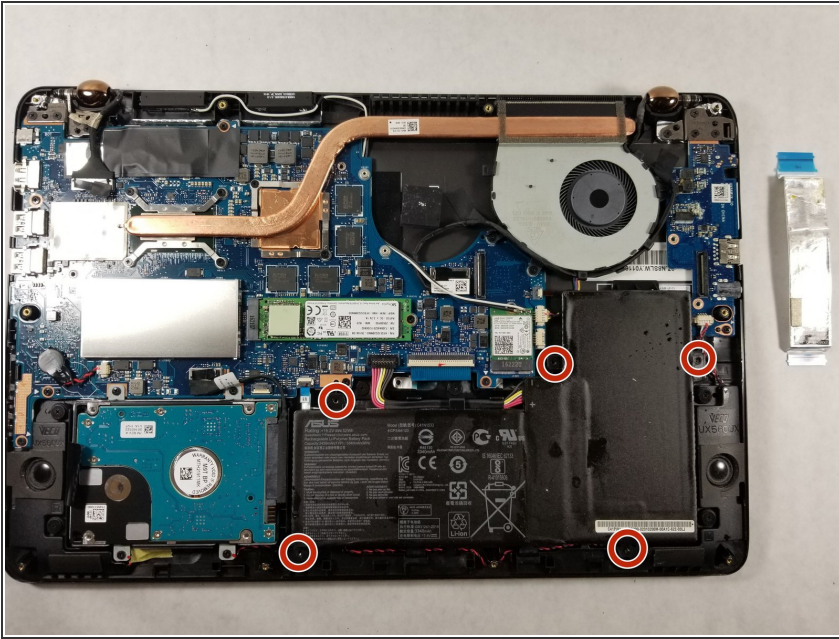
- ⚠ Make sure the device is turned off and unplugged from the charger.
- Using a T5 screwdriver, remove all 10 screws located on the underside of the laptop.
- Pull off the back cover of the laptop.
- ⓘ A pry tool may be needed to pull off the back cover.

Step 2



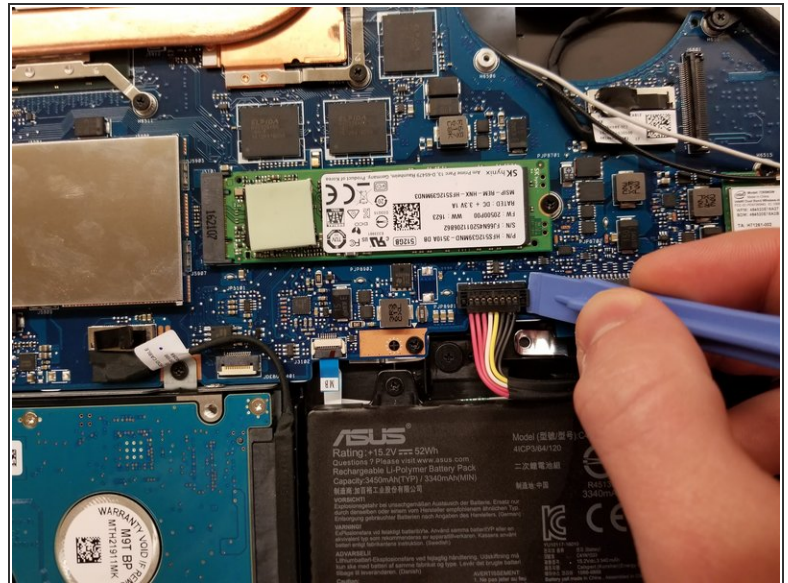
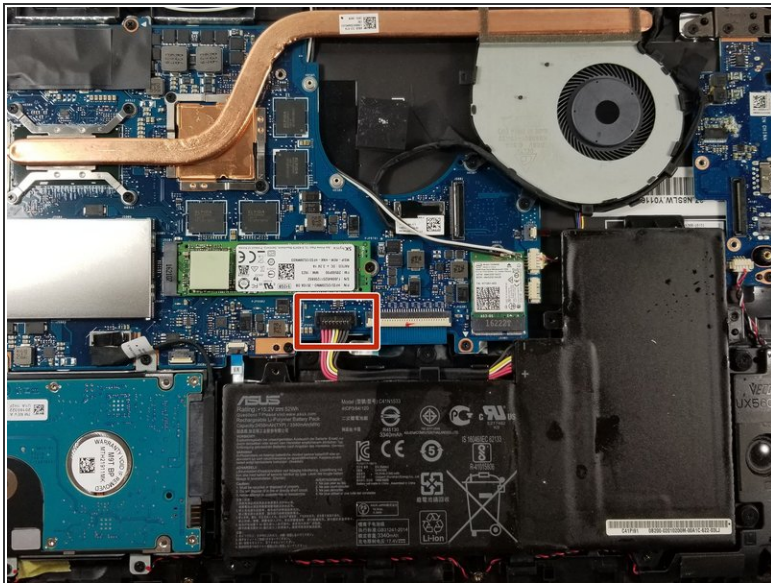
- Lift up the black tab next to the silver ribbon cable.
- Pull lightly on the blue tabs until the silver cable is free.

Step 3



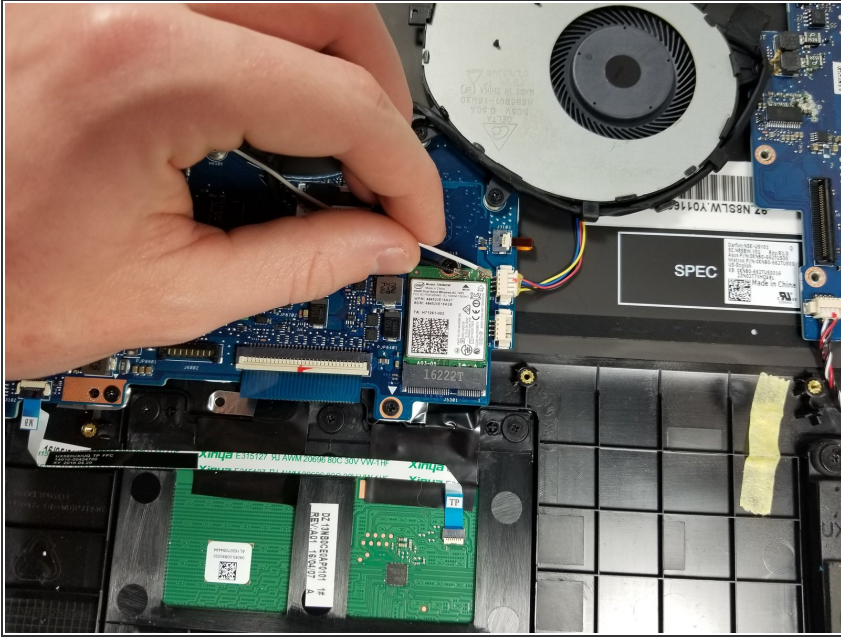
- Using a Phillips #00 screwdriver, remove the 5 marked screws.

Step 4



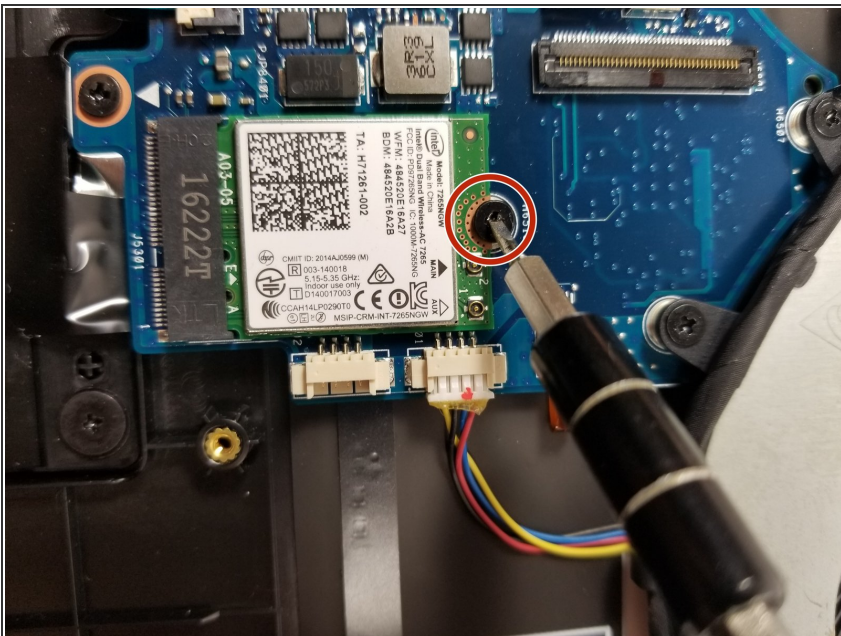
- Locate the battery connector.
- Wedge a pry tool under the battery connector.
- Gently pull on the connector until it disconnects from the base of the object.
- Pull out the battery.

Step 5 — Wi-Fi card



- Disconnect the Wi-Fi antennae cables by gently detaching them with a pull in an upwards motion
- ❗ Needle nose pliers can be used as a detaching tool

Step 6



- Using a Phillips #0 screwdriver, remove the screw.
- Lift the Wi-Fi card out with an upward motion.
- ❗ A prying tool can be used to lift the Wi-Fi card.

To reassemble your device, follow these instructions in reverse order.