



Written By: Brandon Wells



INTRODUCTION

Replace a broken or messed up CD-Drive.

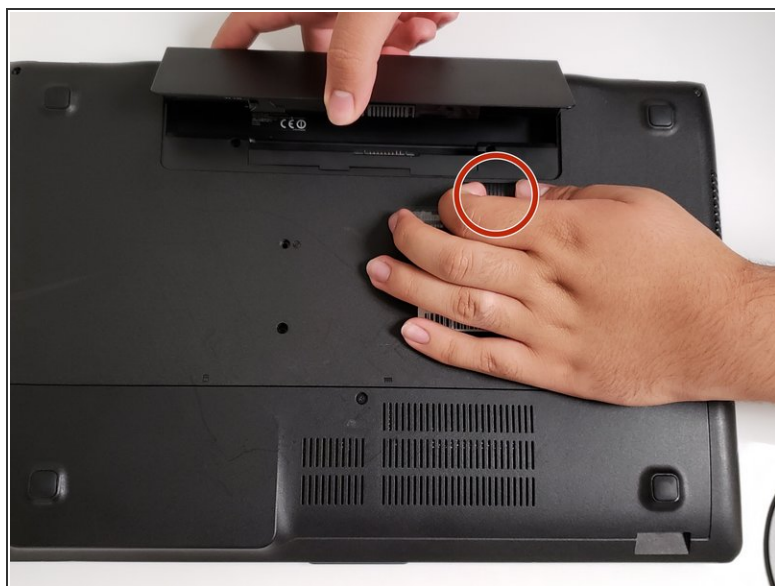
Before starting on this guide, unplug the laptop from its charger and turn the laptop off.



TOOLS:

- [Phillips #0 Screwdriver](#) (1)
-

Step 1 — Battery



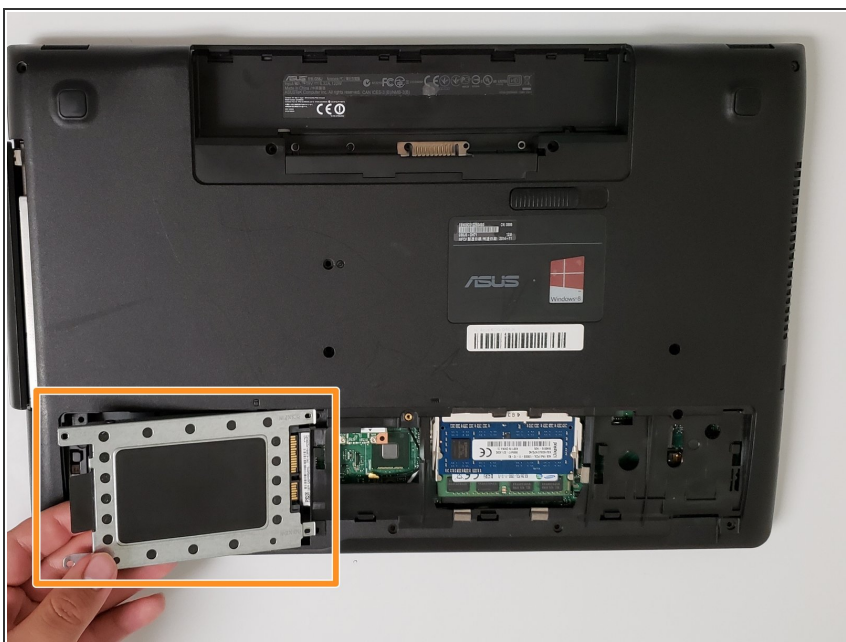
- Push the slider to the opposite side, while pulling out the battery.
- Remove the battery from the device.

Step 2 — Hard Drive



- Remove the 4 mm screw on the cover using a Phillips #0 screwdriver.
- Remove the cover for the hard drive by pushing down and sliding it towards yourself.

Step 3



- Slide the hard drive to left and remove it from the device.

Step 4 — Back Panel




- Unscrew the four 4mm screws using a Phillips #0 screwdriver.

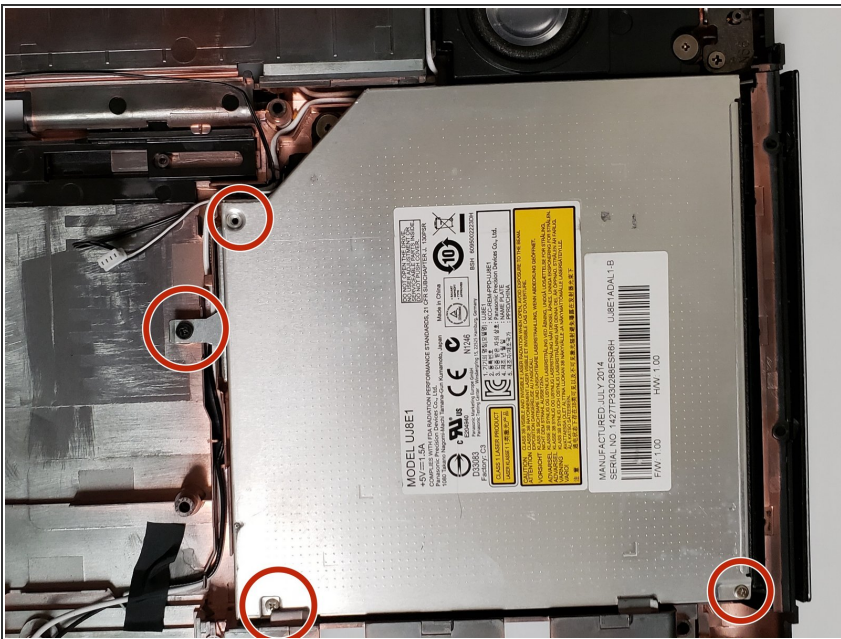
Step 5



- Flip the computer right side up and start to lift the keyboard. The keyboard/back panel should come off.

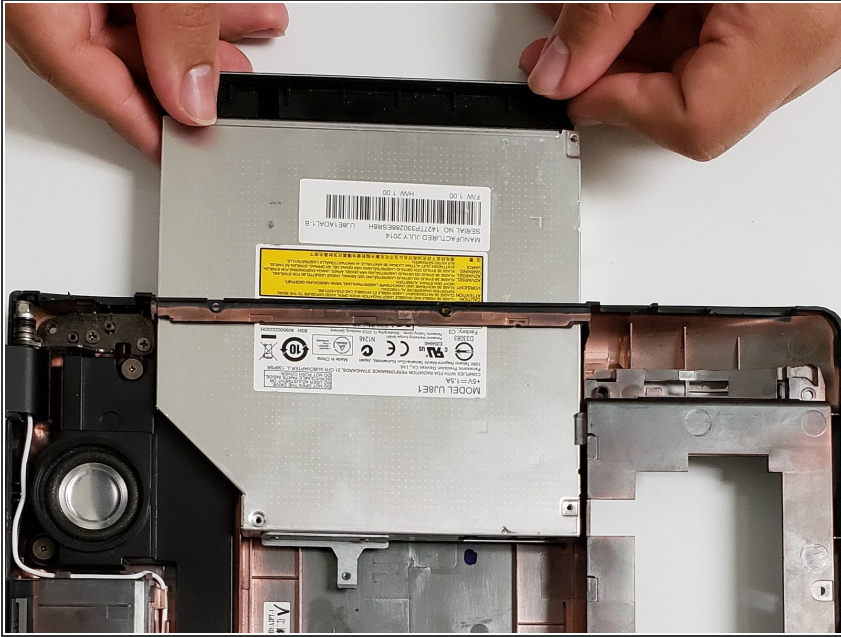
 Do not force the keyboard/back panel off. This could damage internal components and bend the keyboard.

Step 6 — CD Drive



- Using a Phillips #0 screwdriver, unscrew the four 4mm screws.

Step 7



- Gently pull the CD drive out of the side of the laptop and remove it from the device.

To reassemble your device, follow these instructions in reverse order.