



Asus ROG G751JL-BB17T29 Hard Drive Replacement

This guide will show how to remove the Hard Drive housing Cover and allow for the removal and replacement of the Hard Drive.

Written By: Kyle Miller



This document was generated on 2020-01-29 02:29:29 AM (MST).



TOOLS:

- [iFixit Opening Tools](#) (1)
- [iFixit Opening Picks set of 6](#) (1)
- [Phillips #00 Screwdriver](#) (1)
- [Spudger](#) (1)



PARTS:

- [1 TB SSD / Upgrade Bundle](#) (1)
- [250 GB SSD / Upgrade Bundle](#) (1)
- [500 GB SSD / Upgrade Bundle](#) (1)
- [2 TB SSD / Upgrade Bundle](#) (1)

Step 1 — Remove the RAM access door



- Use an opening tool to pry up the small rubber cover on the upper right corner of the RAM access door.

Step 2



- Remove the 5.3 mm Phillips #00 screw securing the RAM access door.
- ⓘ This screw is held in the hole in the door with a washer and will not come out of the hole, even after you unscrew it.

Step 3



- Insert the point of an opening pick in the seam near the top right corner of the RAM access door and gently pry the door up slightly.
- The door is held in place by small clips around its edges. Pry until you feel the nearest clips release.

Step 4



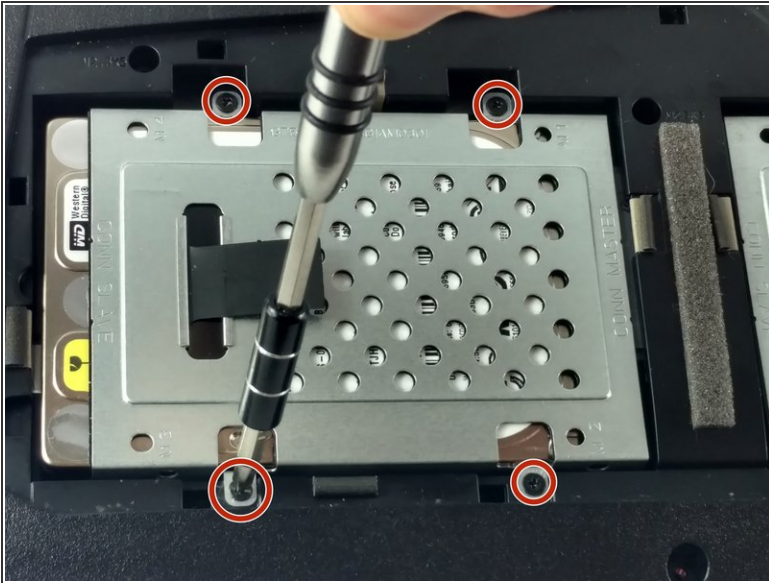
- Insert the wide edge of an opening pick into a new part of the seam between the door and the computer.
- Pry the door up to release the clips closest to the pick.
- Continue to slide the pick along the seam all the way around the door, prying as you go, until all the clips holding the door down have been released.

Step 5



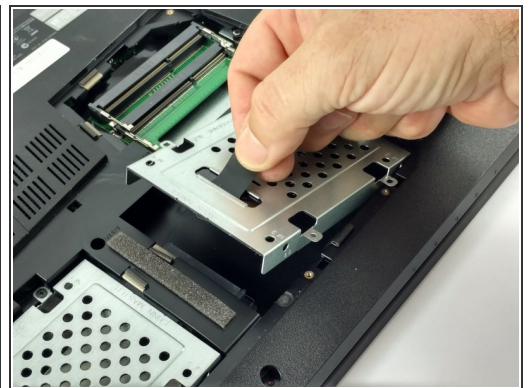
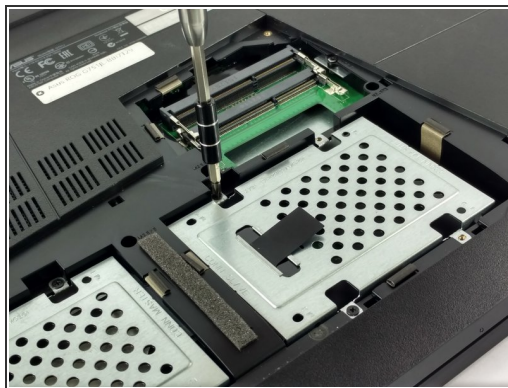
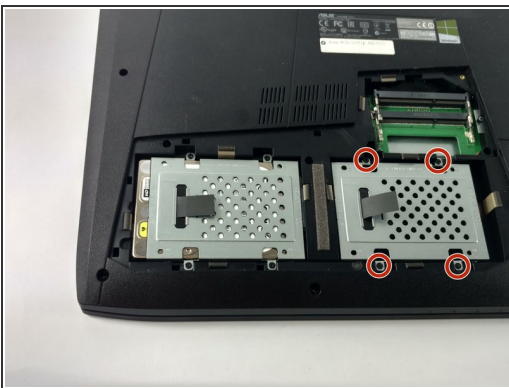
- Remove the RAM access door.

Step 6 — Hard Drive



- Remove the four 2.4 mm screws securing the left hard drive with a Phillips screwdriver.
- Use the pull-tab to lift the hard drive housing and pull the hard drive away from the connector.

Step 7



- Remove the four 2.4 mm screws securing the right hard drive housing with a Phillips screwdriver.
- Use the pull-tab to lift the hard drive housing and pull the hard drive away from the connector.

To reassemble your device, follow the above steps in reverse order.

Take your e-waste to an [R2 or e-Stewards certified recycler](#).

Repair didn't go as planned? Check out our [Answers community](#) for troubleshooting help.