



Asus ROG G751JL-BSI7T28 SD Card Reader Replacement

How to replace an Asus ROG G751JL-BSI7T28 SD card reader.

Written By: Dylan Michael Leonard



INTRODUCTION

It is important to power down the Asus ROG G751JL-BSI7T28 prior to starting the repair as well as unplug the A/C adapter. While this covers most of the concern with electrical components, there still may be connectors with power going through them. There is no risk for a personal shock however no metal should be near the laptop during the repair. Necklaces, bracelets, rings, etc could potentially short out components on the motherboard of the laptop making your problem bigger than when you started the repair!

When replacing the SD Card Reader, it is important to take care of the replacement prior to installation. This component has little receivers inside and if debris gets into this, there may be more problems down the line with the SD Card Reader. If the pins inside this are damaged, the component must be replaced so be careful.



TOOLS:

- [Spudger](#) (1)
- [Phillips #0 Screwdriver](#) (1)
- [iFixit Opening Tools](#) (1)



PARTS:

- <https://www.asus.com/support/> (1)

Step 1 — Back Panel



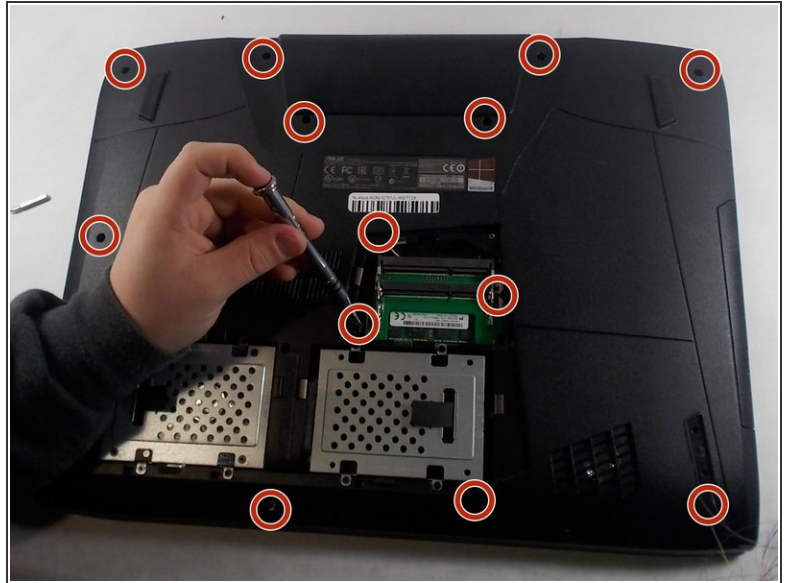
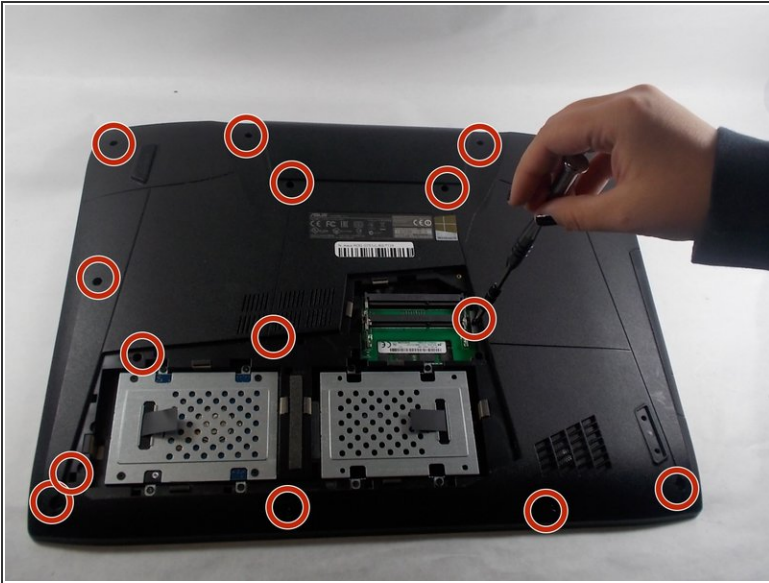
- With the laptop closed, turn it upside-down so the bottom is facing up toward you.

Step 2



- Place a spudger into the notch, and pry the small triangular piece away from the laptop.
- Remove the single 3mm Phillips #0 screw.
- Place a spudger beneath the back panel, and pry it away from the laptop.

Step 3 — Display Assembly



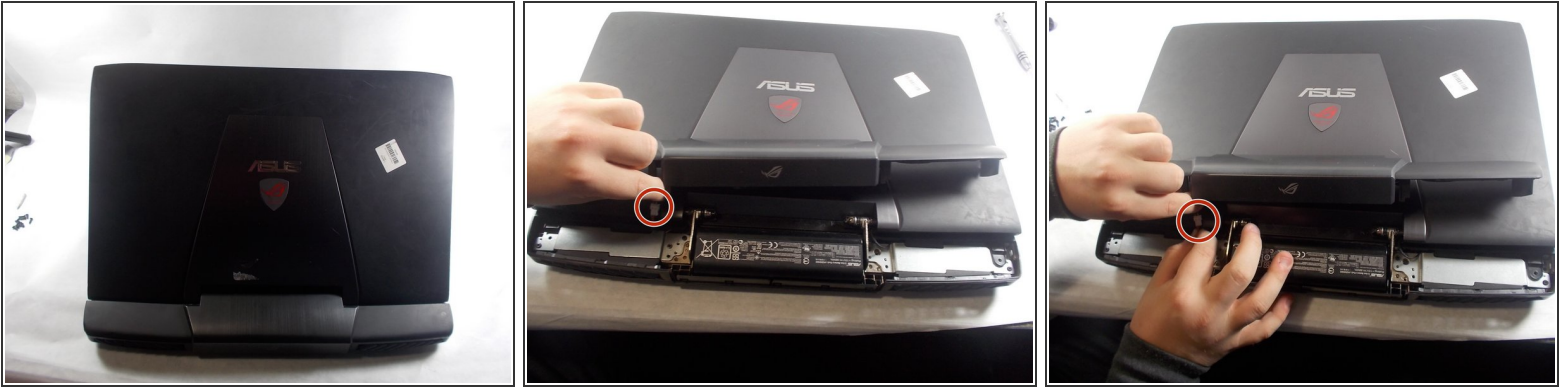
- Remove all 5mm Phillips #0 screws from the back cover.

Step 4



- Use a spudger to pry the disc drive out of the laptop.

Step 5



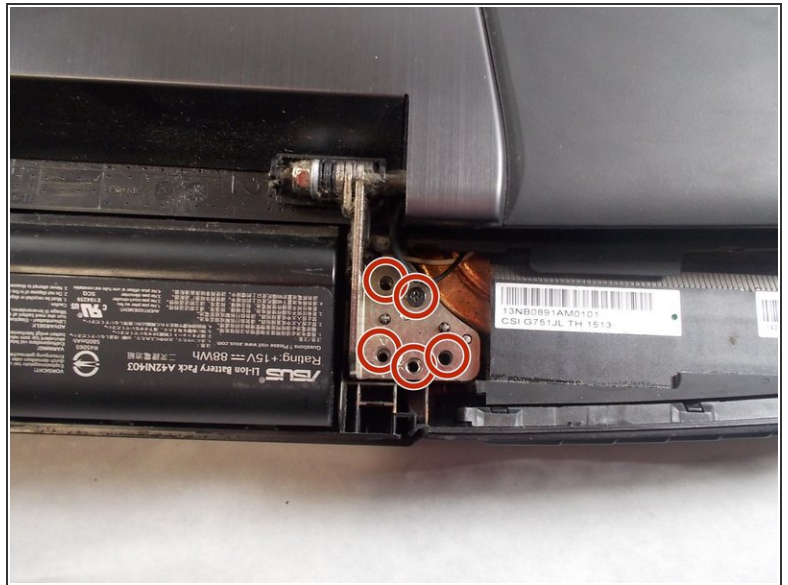
- Open the laptop and turn it so that the ASUS logo is facing you.
- Pull up on the display hinge housing shroud.
- Disconnect the RGB light power cable in the shroud before fully removing it.

Step 6



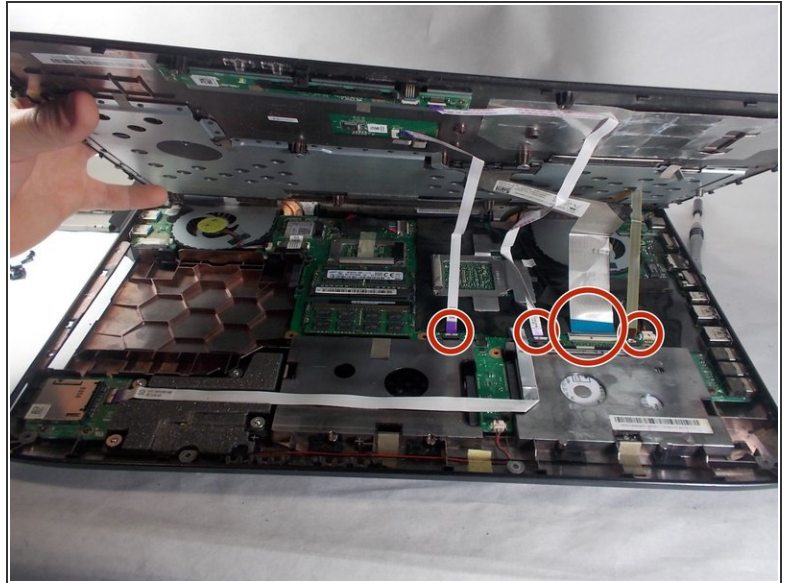
- Remove the 5mm Phillips #0 screws.
- Lift up the silver brackets on each side of the laptop.

Step 7



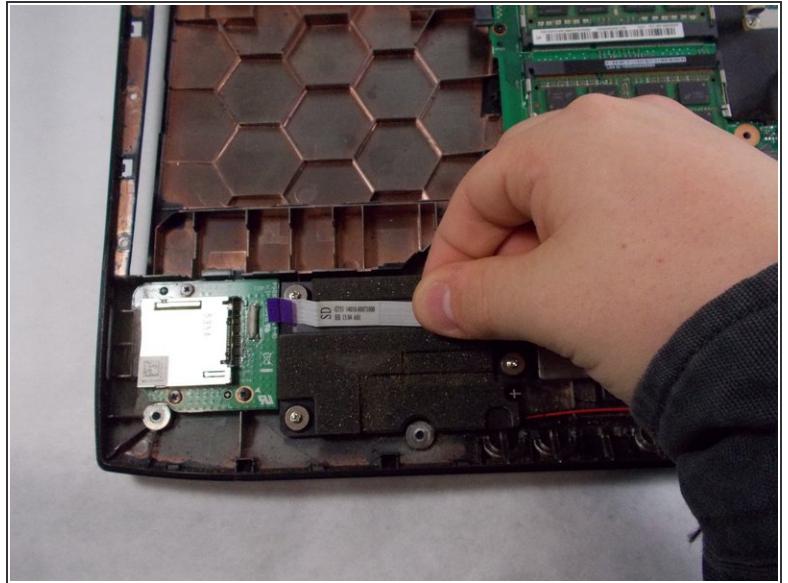
- Remove the 5mm Phillips #0 screws from the hinges.
- Detach the ribbon cable, and remove the display assembly from the laptop.

Step 8 — Keyboard



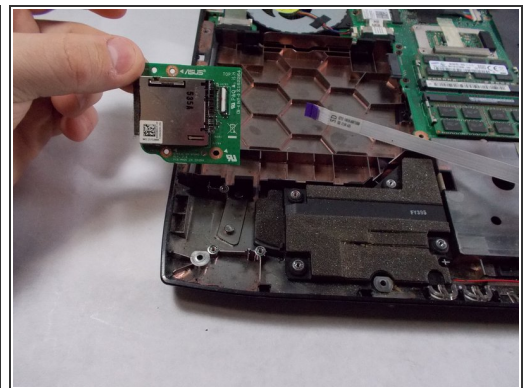
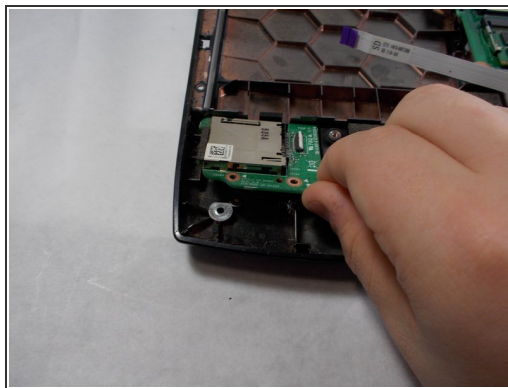
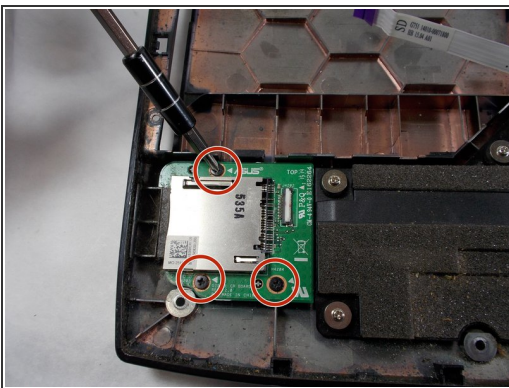
- Lift the keyboard up.
- Use an opening tool to detach the ribbon cables connecting the keyboard to the rest of the laptop.
- Remove the keyboard from the laptop.

Step 9 — SD Card Reader



- Flip the SD card reader's retaining arm up.
- Remove the SD card reader's power/data ribbon cable.

Step 10



- Remove three 3mm Phillips #0 screws from the SD card reader.
- Remove the SD card reader.

To reassemble your device, follow these instructions in reverse order.