



# Asus ROG G751JL-BSI7T28 USB Port Board Replacement

How to replace the USB port board in an Asus ROG G751JL-BSI7T28.

Written By: Dylan Michael Leonard



## INTRODUCTION

It is important to power down the Asus ROG G751JL-BSI7T28 prior to starting the repair as well as unplug the A/C adapter. While this covers most of the concern with electrical components, there still may be connectors with power going through them. There is no risk for a personal shock however no metal should be near the laptop during the repair. Necklaces, bracelets, rings, etc could potentially short out components on the motherboard of the laptop making your problem bigger than when you started the repair!

When replacing the USB port board, it is important to be delicate with taking the old hardware out as well as putting the new in. The USB port board is connected to the motherboard which is also home to all the other components in the computer. Breaking this will complicate the repair so it is important to take it slow and be gentle.



### TOOLS:

- [Spudger](#) (1)
- [Phillips #0 Screwdriver](#) (1)
- [iFixit Opening Tools](#) (1)



### PARTS:

- <https://www.asus.com/support/> (1)

## Step 1 — Back Panel



- With the laptop closed, turn it upside-down so the bottom is facing up toward you.

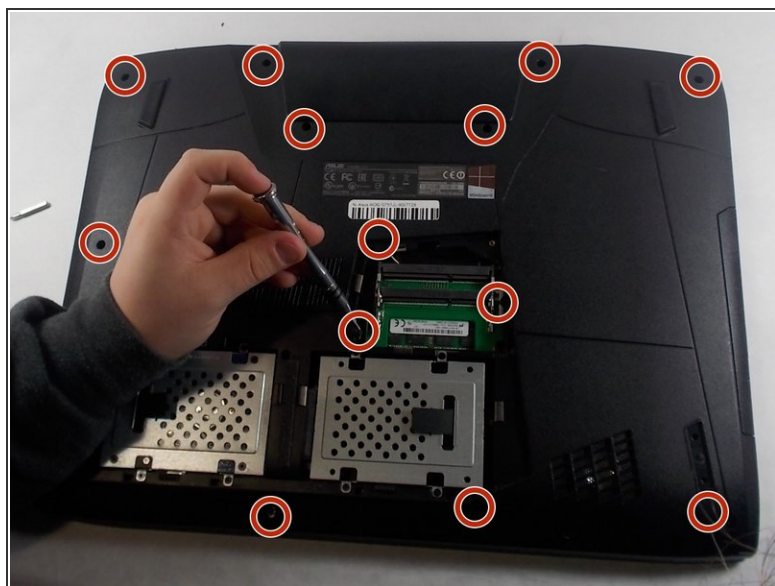
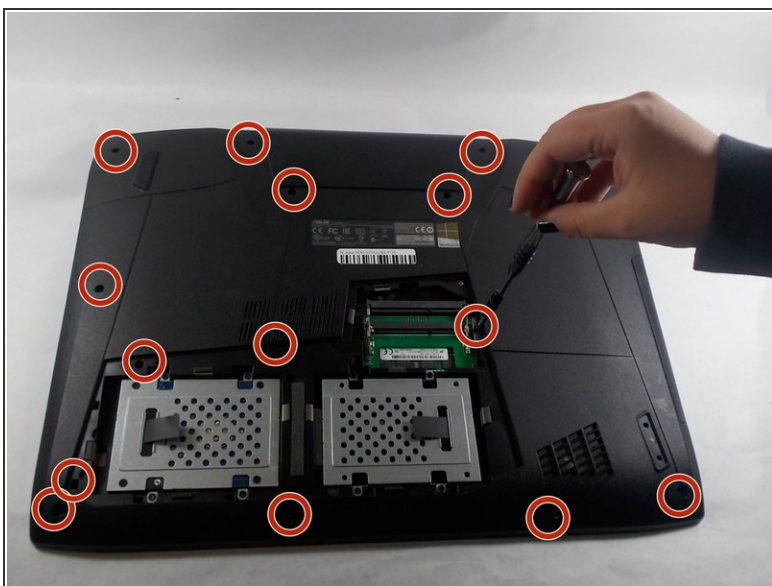
## Step 2



- Place a spudger into the notch, and pry the small triangular piece away from the laptop.
- Remove the single 3mm Phillips #0 screw.
- Place a spudger beneath the back panel, and pry it away from the laptop.



### Step 3 — Display Assembly



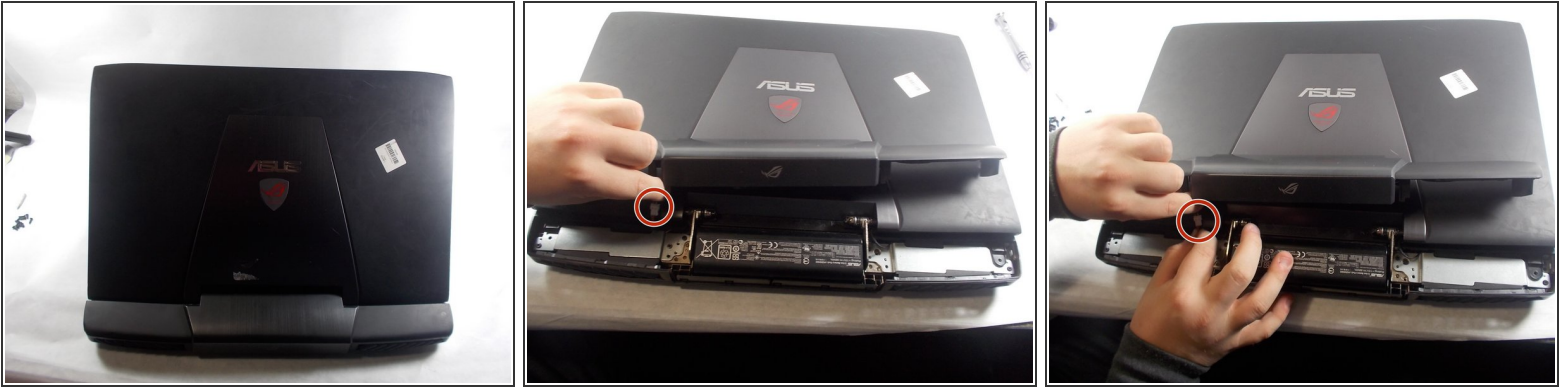
- Remove all 5mm Phillips #0 screws from the back cover.

### Step 4



- Use a spudger to pry the disc drive out of the laptop.

## Step 5



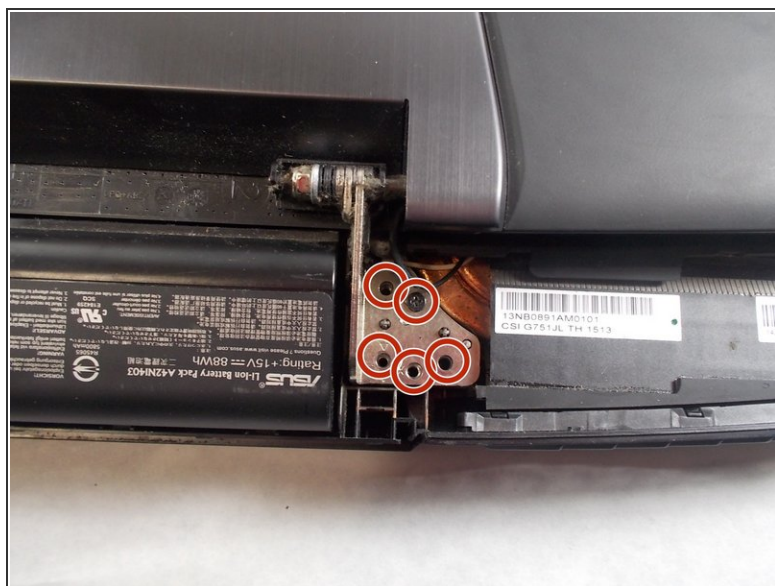
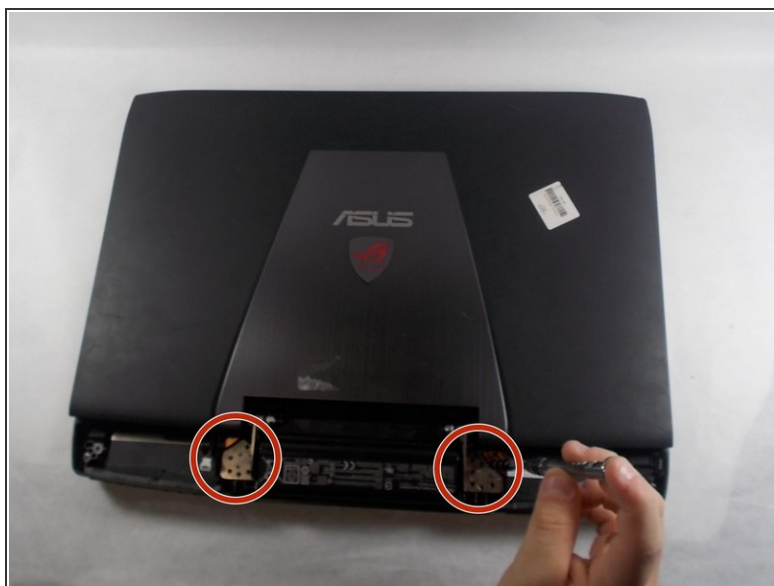
- Open the laptop and turn it so that the ASUS logo is facing you.
- Pull up on the display hinge housing shroud.
- Disconnect the RGB light power cable in the shroud before fully removing it.

## Step 6



- Remove the 5mm Phillips #0 screws.
- Lift up the silver brackets on each side of the laptop.

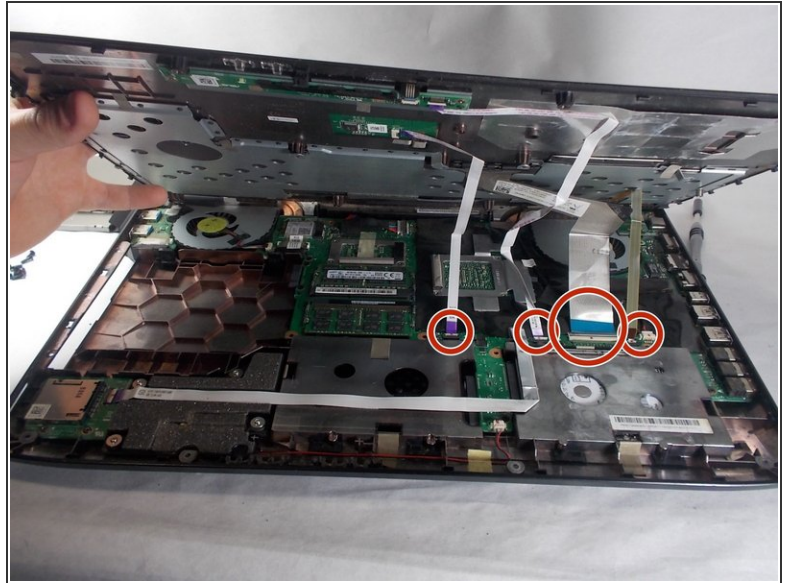
## Step 7



- Remove the 5mm Phillips #0 screws from the hinges.
- Detach the ribbon cable, and remove the display assembly from the laptop.

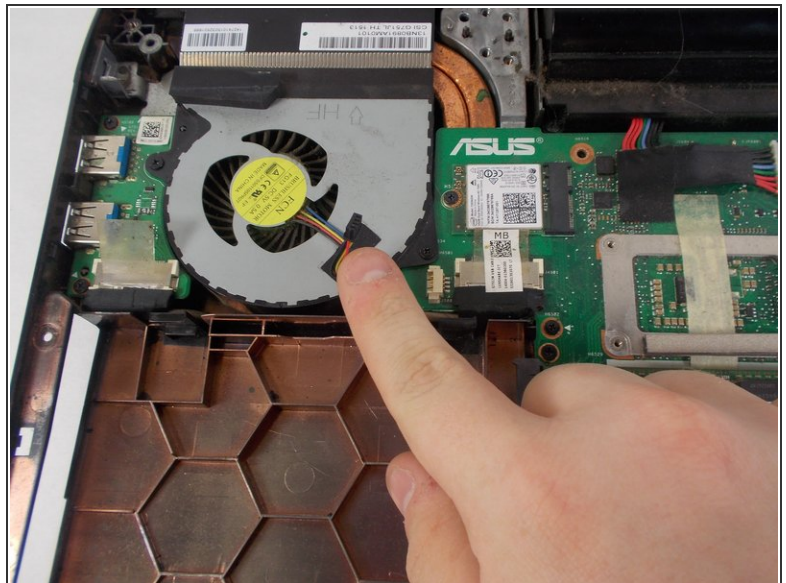
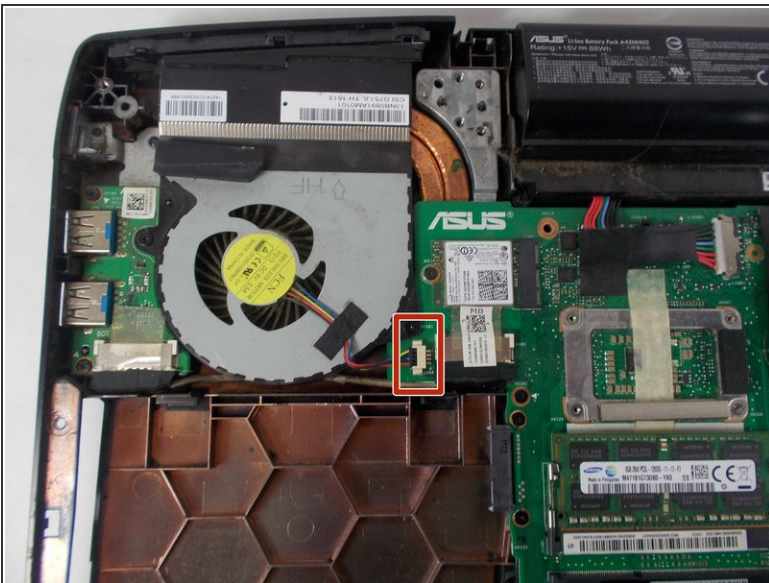


## Step 8 — Keyboard



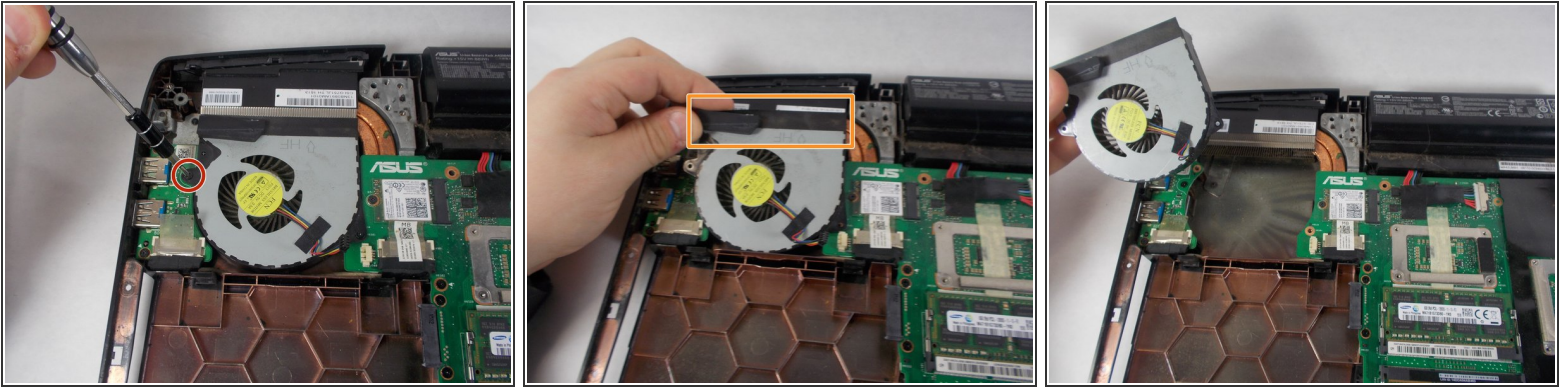
- Lift the keyboard up.
- Use an opening tool to detach the ribbon cables connecting the keyboard to the rest of the laptop.
- Remove the keyboard from the laptop.

## Step 9 — Fan



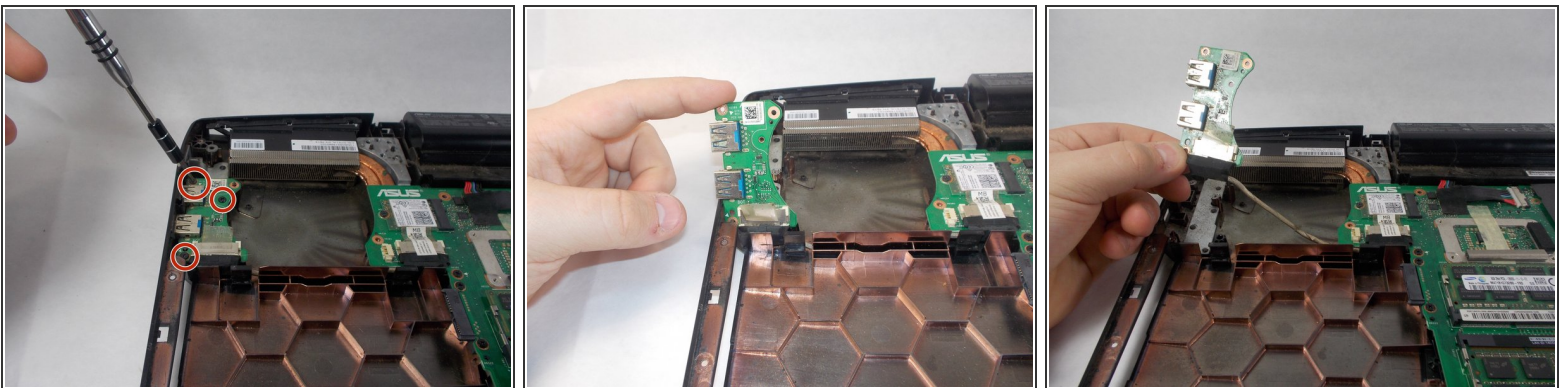
- Remove the fan's power cable by pulling carefully outward towards the fan.

## Step 10



- Remove the 5mm Phillips #0 screws.
- Pull up on the black tab connected to the fan. This will lodge the fan completely making it able to be removed.
- Remove the fan from the laptop.

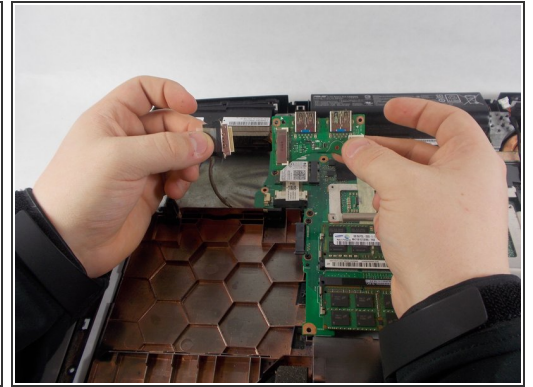
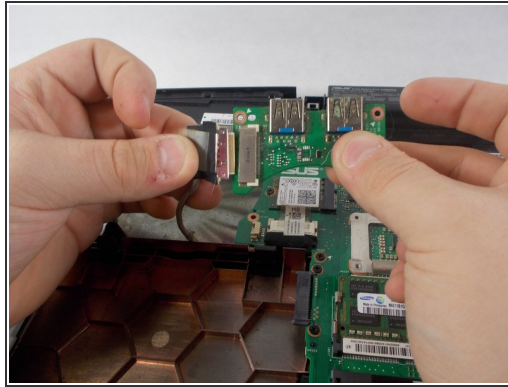
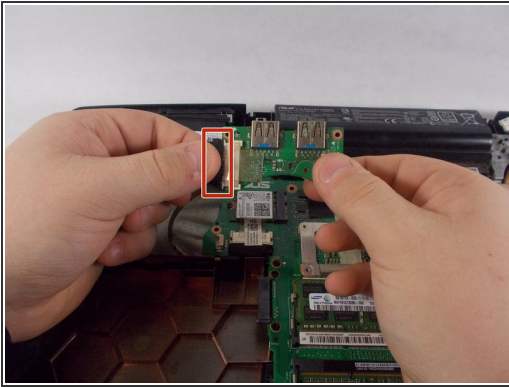
## Step 11 — USB Port Board



- Remove the three 5mm Phillips #0 screws from the USB port board.
- Lift the USB port board out of the laptop.



## Step 12



- Pull the data cable out of the USB port board.

To reassemble your device, follow these instructions in reverse order.