



# Asus ROG G751JL-DS71 Central Processing Unit Replacement

This guide will teach you how to replace the Central Processing Unit in your device. This is important for the usability of the device.

Written By: Justin Keathley



---

## INTRODUCTION

This guide will teach you how to replace the Central Processing Unit in your device. This is important for the usability of the device.

---

### **TOOLS:**

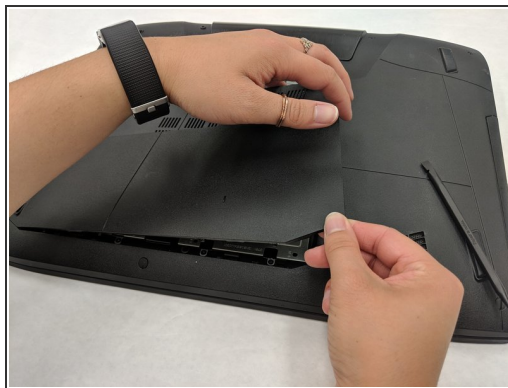
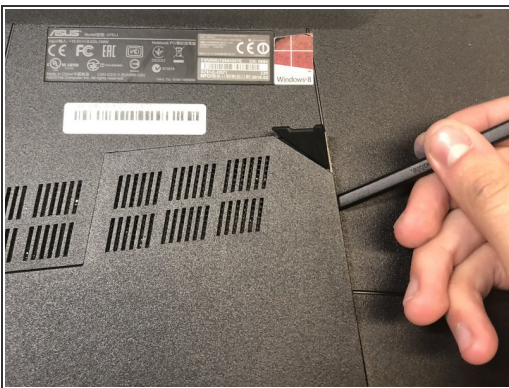
- [Spudger](#) (1)
  - [Metal Spudger](#) (1)
  - [Phillips #0 Screwdriver](#) (1)
  - [Phillips #1 Screwdriver](#) (1)
-

## Step 1 — Central Processing Unit



- Lift the rubber cover found on the bottom of the laptop.
- Remove the 5.2 mm screw with a Phillips 1 Screwdriver

## Step 2



- Use the standard spudger to remove the back center panel.



## Step 3



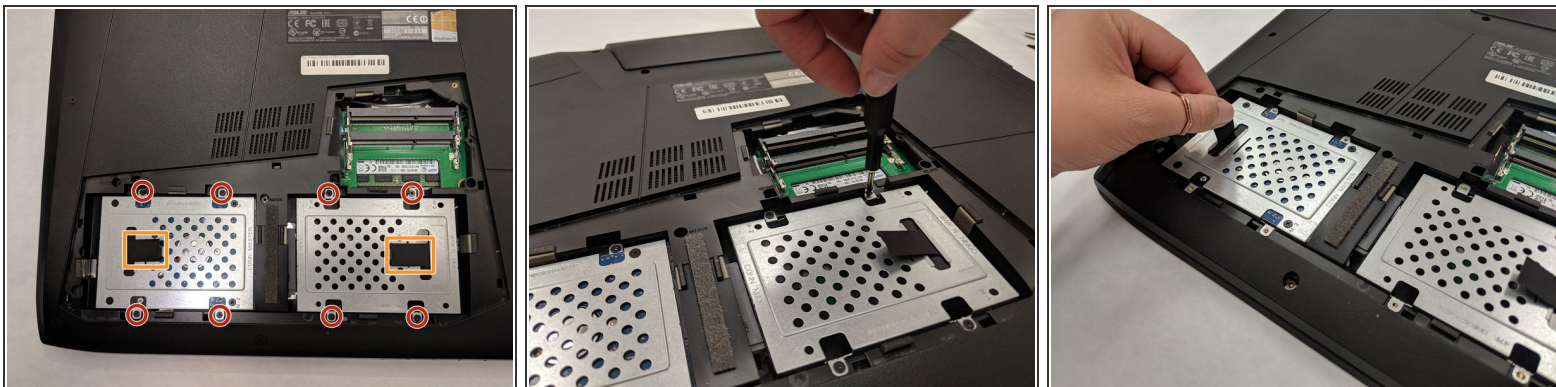
- Use a Phillips 1 Screwdriver to remove the 5 mm screw that is located underneath the back panel.

## Step 4



- Pull out the optical drive found on the side of the laptop.

## Step 5



- Remove the screws holding the hard drives in place using a phillips #1 screwdriver.
- Using the small flaps, remove the hard drives by hand.

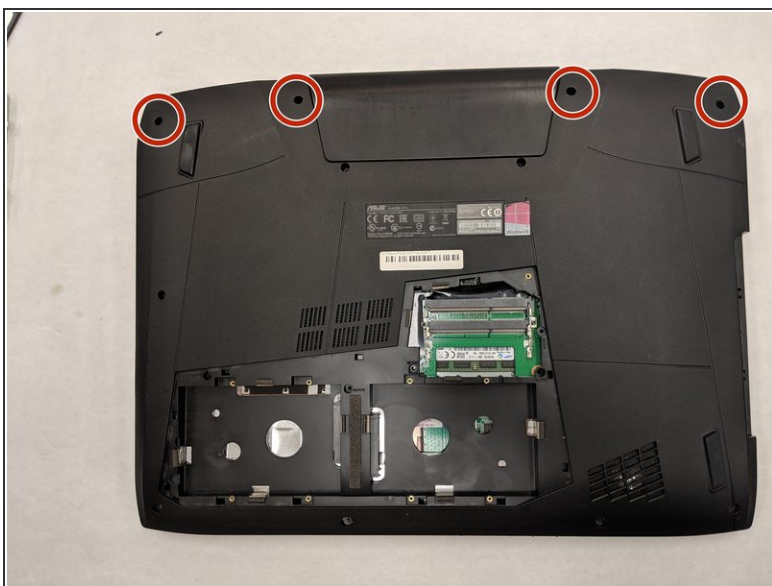
## Step 6



- Use a pair of tweezers to remove the top four rubber stoppers found on the bottom of the laptop.



## Step 7



- Use a Phillips 1 Screwdriver to remove the top four 8.5 mm screws.

## Step 8



- Use a metal spudger to carefully pry the top back panel off.
- ⚠ While removing the top back panel, be careful not to break the four pin connector located underneath.
- Disconnect the four-pin connector and remove the top back panel from the computer.

## Step 9



- Use a Phillips 1 Screwdriver to remove the four 6.8 mm screws underneath the back panel.

## Step 10



- Use a Phillips 1 Screwdriver to remove the ten 5.2 mm screws holding the main panel in place.



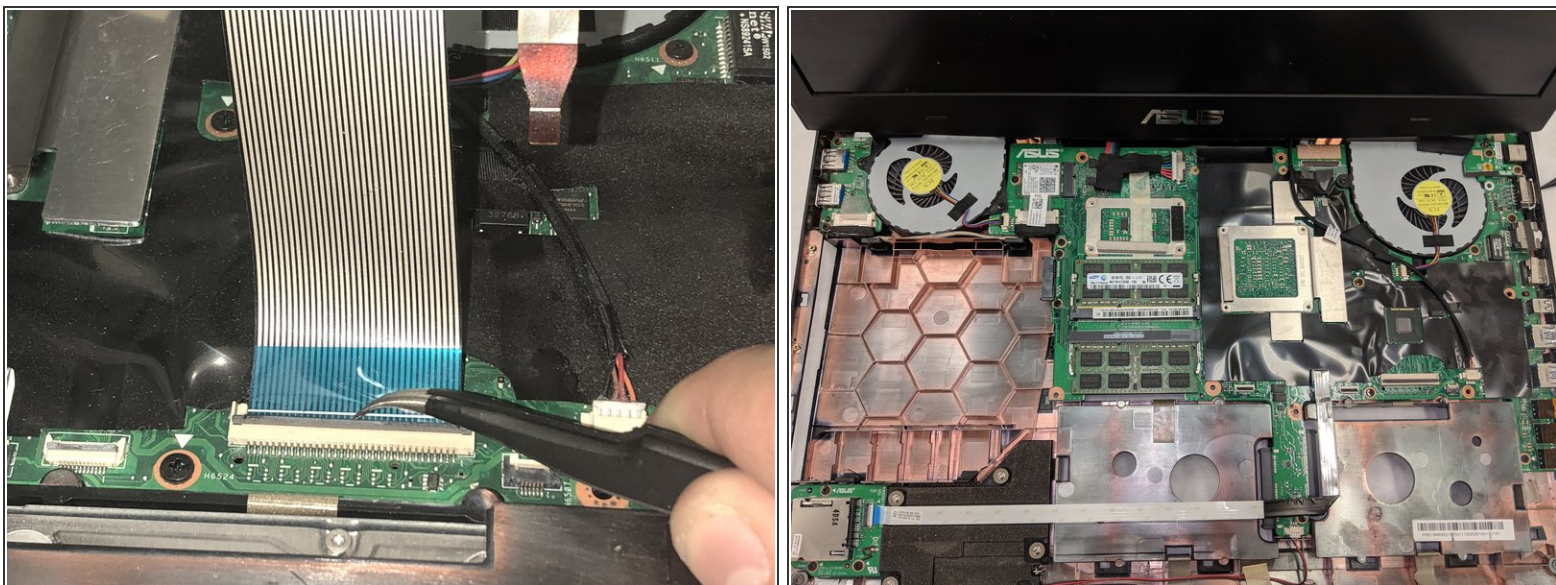
## Step 11



- Use a metal opening tool to pry the keyboard from the base of the laptop.

⚠ Lift the keyboard carefully so as to not tear or break the four ribbon connectors underneath the keyboard.

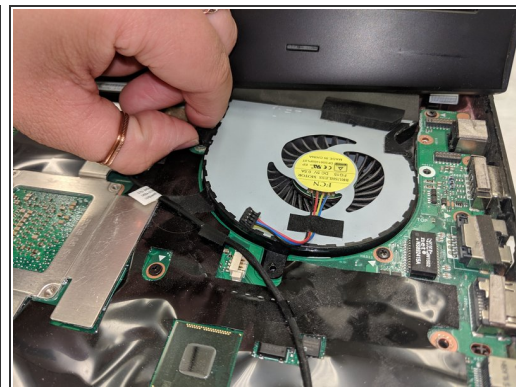
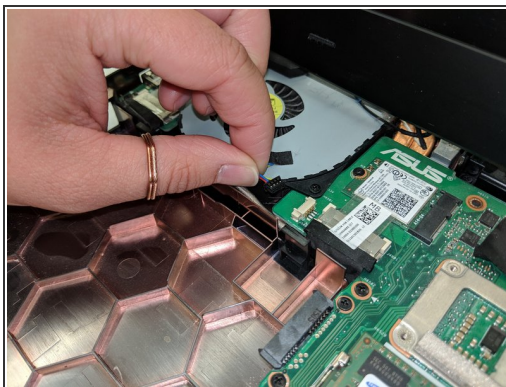
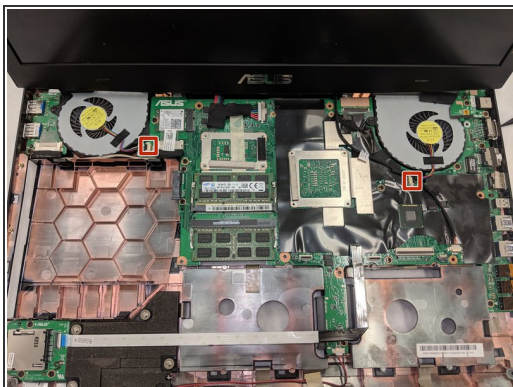
## Step 12



- Use a pair of tweezers to undo each of the four ribbon connectors.
- The keyboard is now completely disconnected from the laptop and you can remove it.

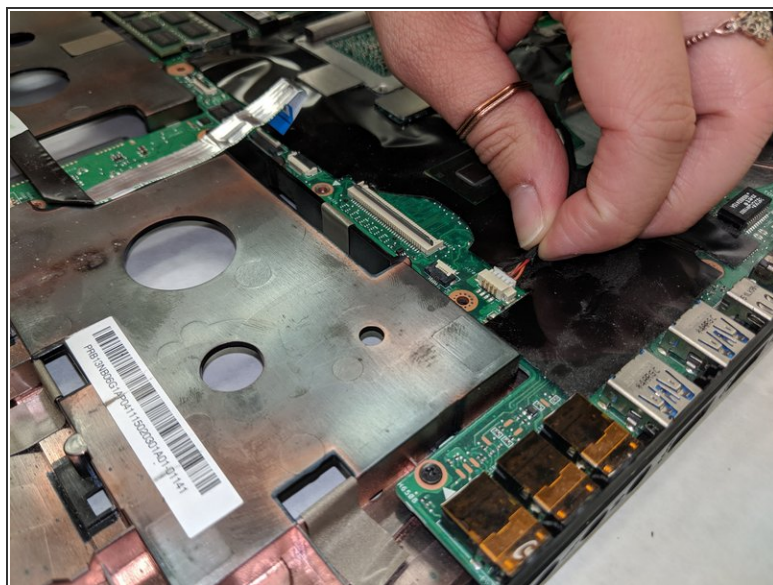
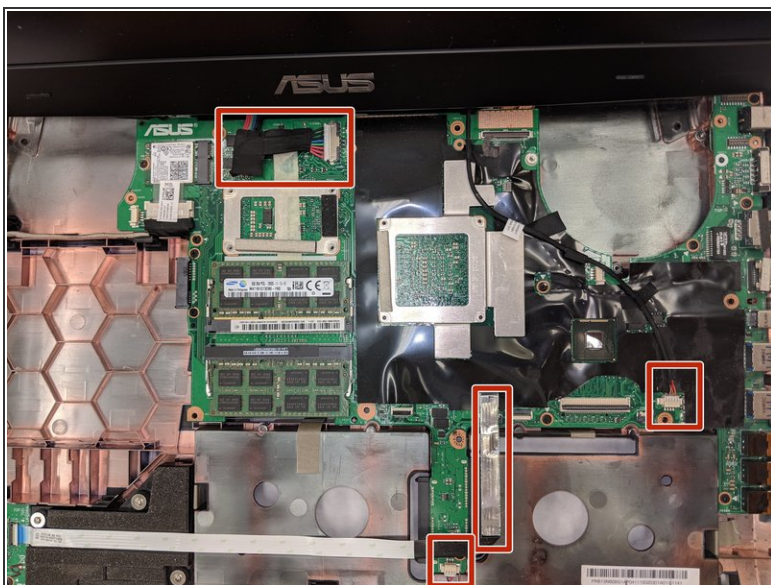


## Step 13



- Remove the ribbon that connect the fans.

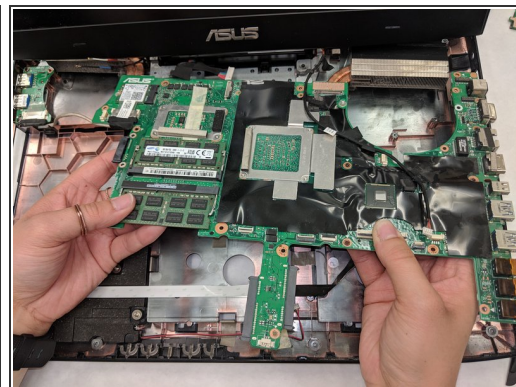
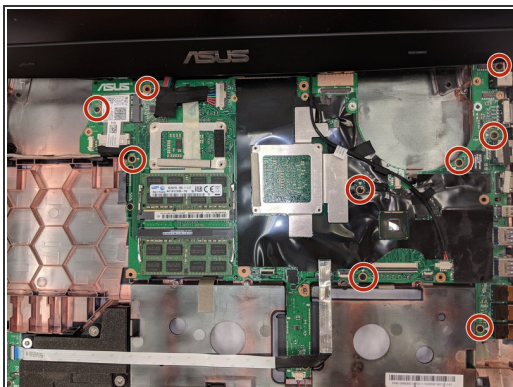
## Step 14



- Remove the ribbon cables connected to the motherboard.

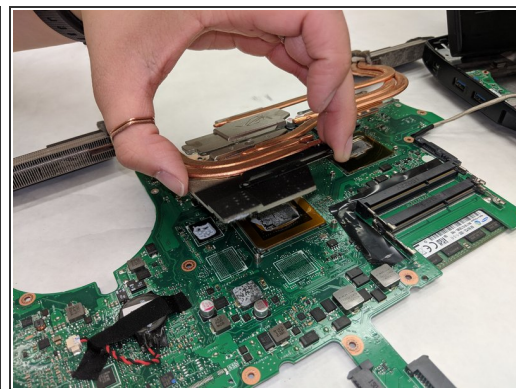
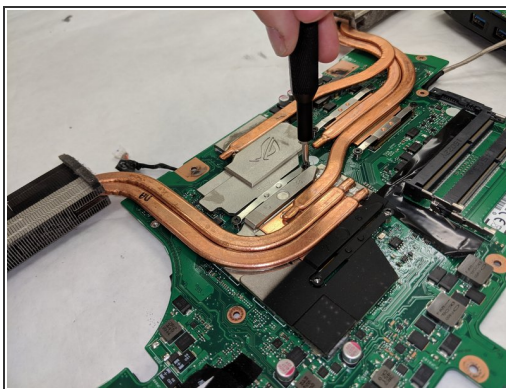
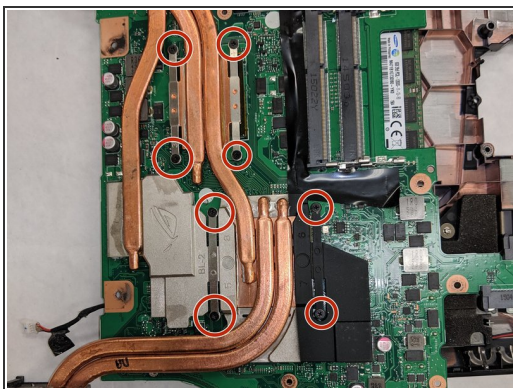


## Step 15



- Remove the screws holding in the motherboard using a Phillips 0 screwdriver.
- ⚠ Remove the motherboard by hand. Be careful as the radiators for the fans are connected underneath the screen.

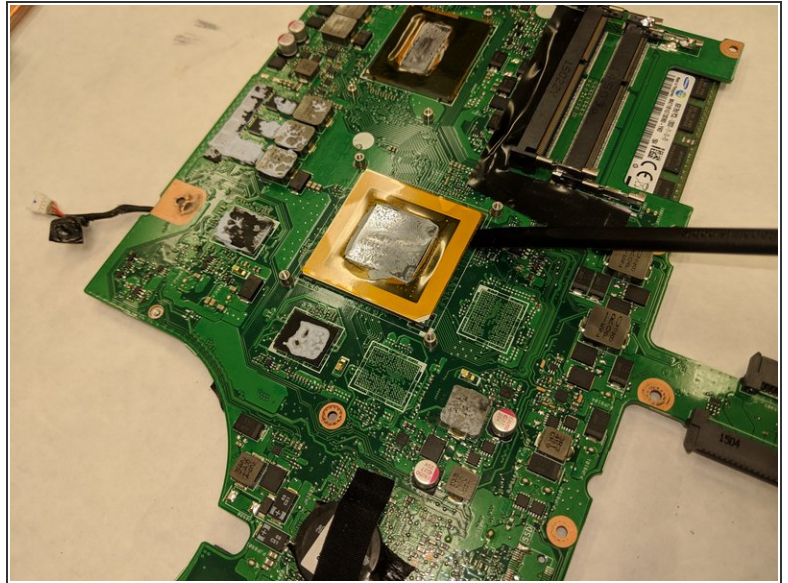
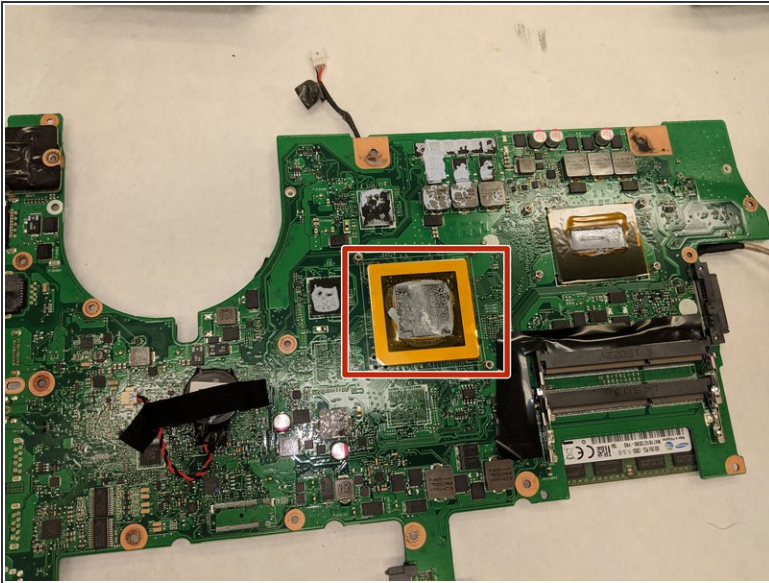
## Step 16



- Remove the screws holding in the motherboard using a Phillips 0 screwdriver.
- ⚠ Remove the heat sink by hand. Be careful not to get thermal paste on your hand



## Step 17



- The CPU can then be removed with a regular spudger.
- The CPU is now completely disconnected from the laptop and you can remove it.

To reassemble your device, follow these instructions in reverse order.