



Asus ROG G751JL-DS71 Keyboard Replacement

This guide will show the user how to safely remove and replace the keyboard.

Written By: Aurora Rios



INTRODUCTION

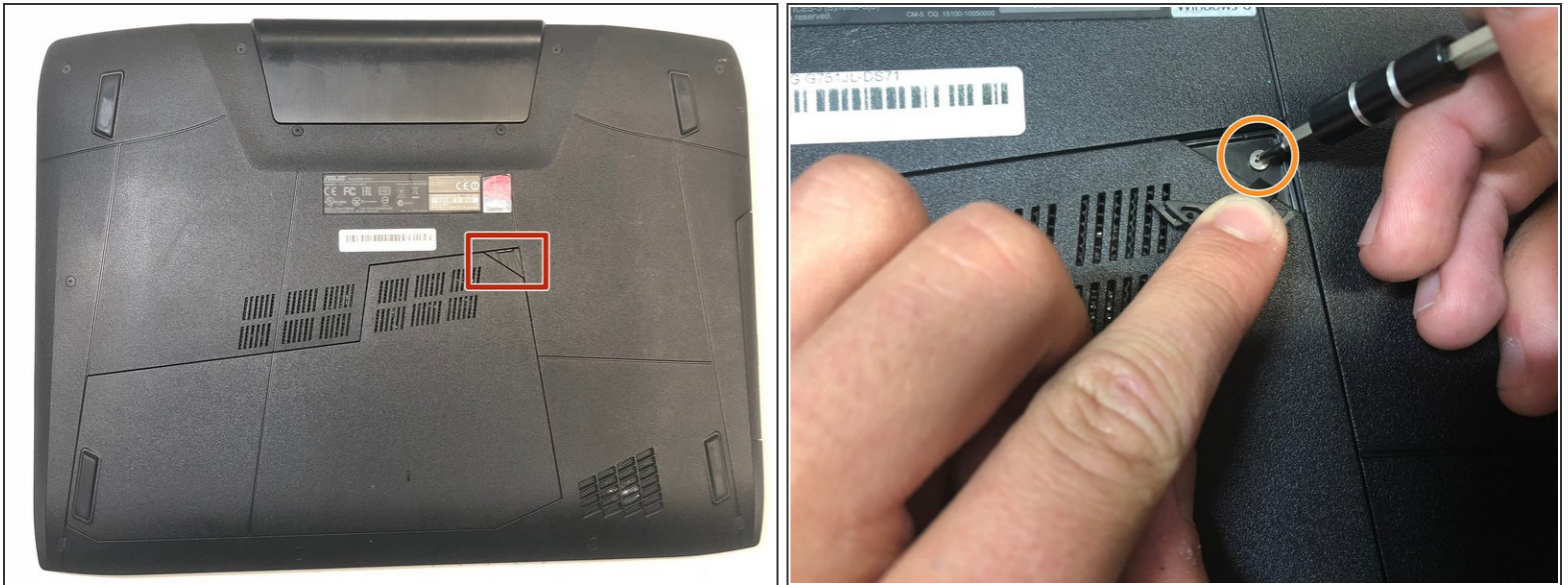
This guide will show the user how to safely remove and replace the keyboard.



TOOLS:

- [iFixit Opening Tools](#) (1)
 - [Phillips #1 Screwdriver](#) (1)
 - [Spudger](#) (1)
 - [Tweezers](#) (1)
-

Step 1 — CD-ROM Player



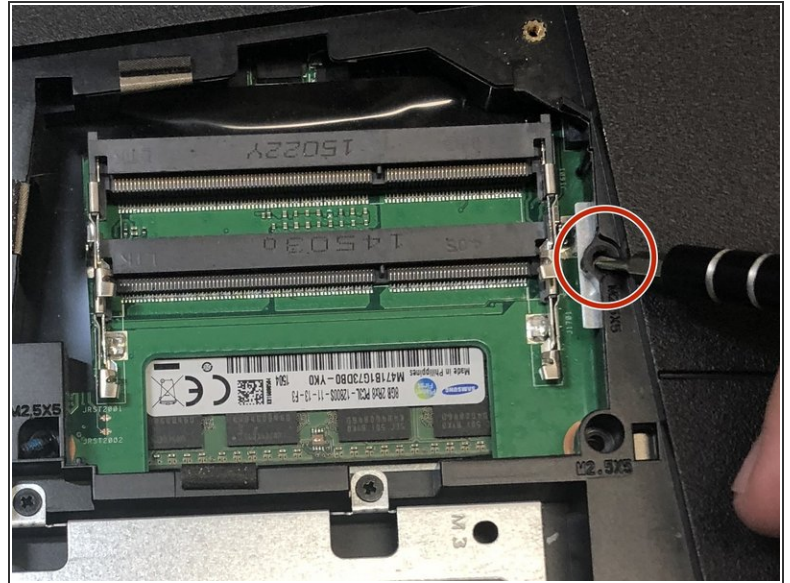
- Lift the rubber cover found on the bottom of the laptop.
- Remove the 5.2 mm screw with a Phillips 1 Screwdriver.

Step 2



- Use the nylon spudger to remove the back center panel.

Step 3



- Use a Phillips 1 Screwdriver to remove the 5 mm screw that is located underneath the back panel.

Step 4



- Pull out the optical drive found on the side of the laptop.

Step 5 — Top Rear Panel



- Use a pair of tweezers to remove the top four rubber stoppers found on the bottom of the laptop.

Step 6



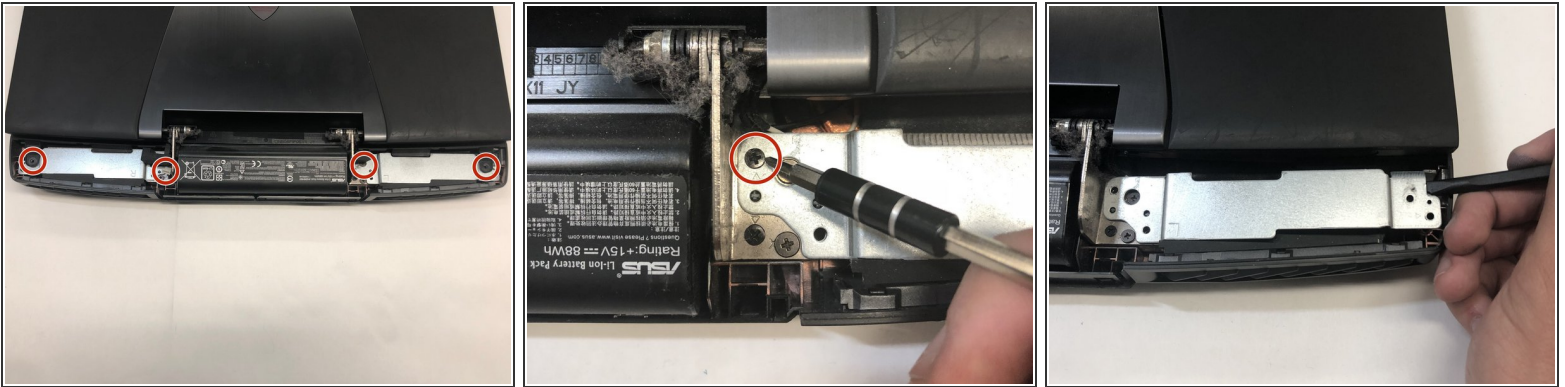
- Use a Phillips 1 Screwdriver to remove the top four 8.5 mm screws.

Step 7



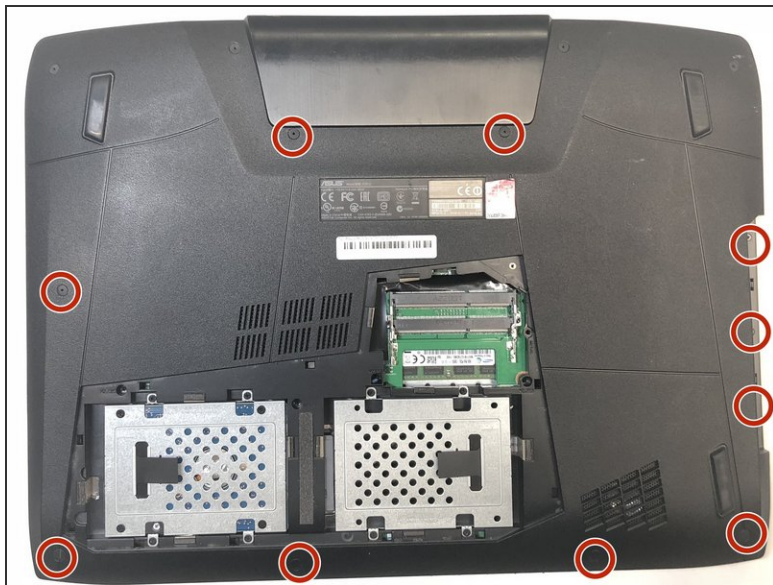
- Use a nylon spudger to carefully pry the top back panel off.
- ⚠ While removing the top back panel, be careful not to break the four pin connector located underneath.
- Disconnect the four-pin connector and remove the top back panel from the computer.

Step 8 — Keyboard



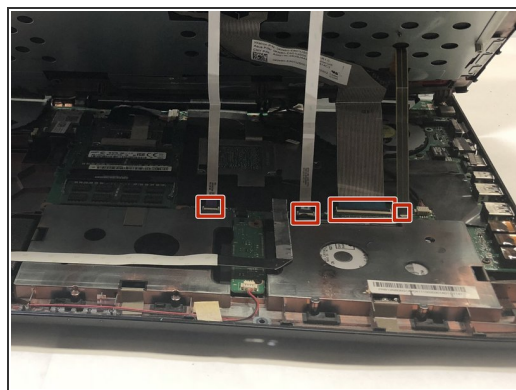
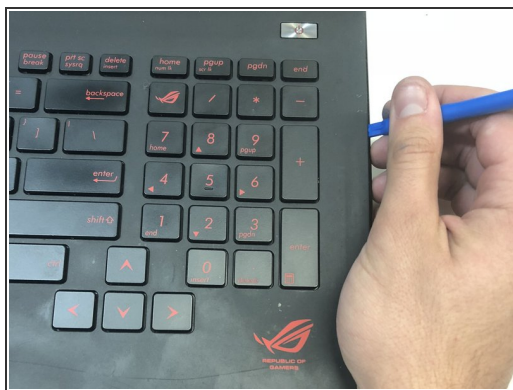
- Use a Phillips 1 Screwdriver to remove the four 6.8 mm screws underneath the back panel.
- Lift away the metal housings from each side of the laptop.

Step 9



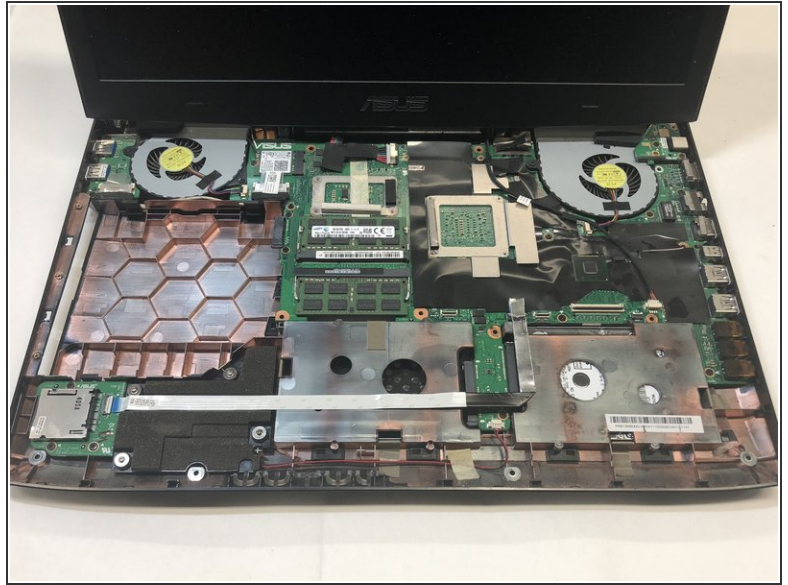
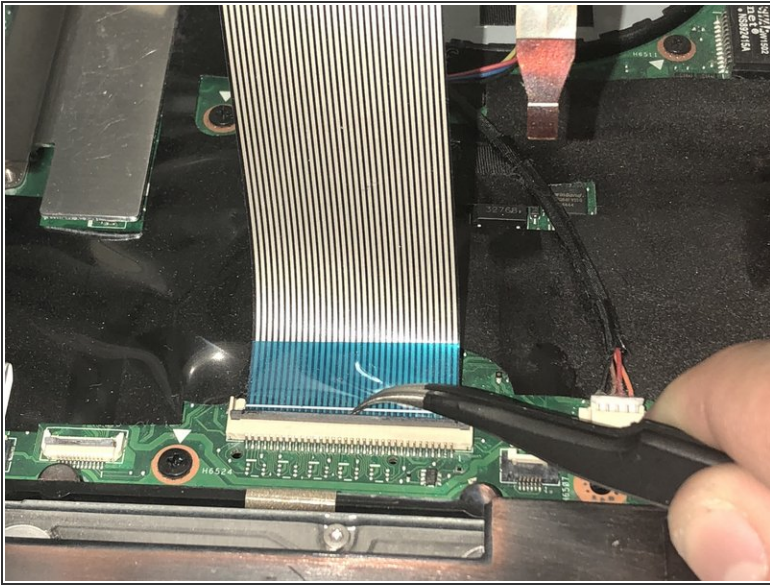
- Use a Phillips 1 Screwdriver to remove the ten 5.2 mm screws holding the main panel in place.
- Use a Phillips 1 Screwdriver to remove the four 5.2 mm screws underneath the center panel.

Step 10



- Use a plastic opening tool to pry the keyboard from the base of the laptop.
- ⚠ Lift the keyboard carefully so as to not tear or break the four ribbon connectors underneath the keyboard.

Step 11



- Use a pair of tweezers to undo each of the four ribbon connectors.
- The keyboard is now completely disconnected from the laptop and you can remove it.

To reassemble your device, follow these instructions in reverse order.