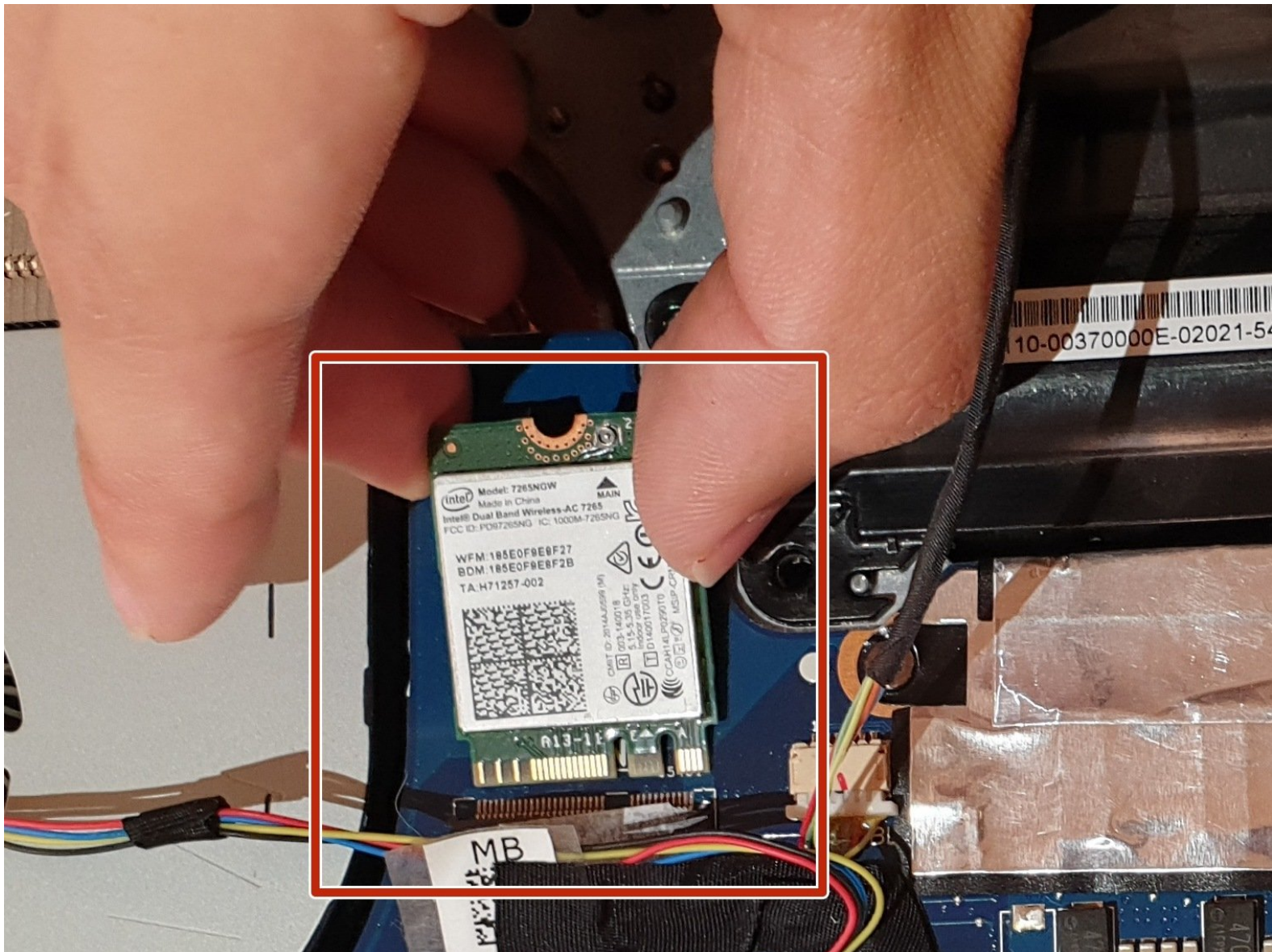




Asus ROG G752V Wireless Card Replacement

This guide will help you take out and replace the wireless card.

Written By: Jeong



INTRODUCTION

If your wireless card is damaged or needs to be replaced due to [blue screen](#) this guide will help you replace your old hardware.



TOOLS:

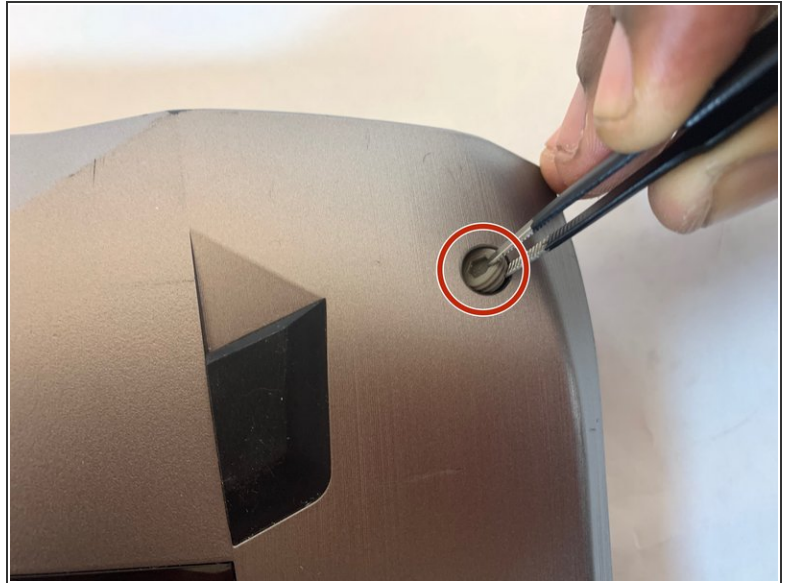
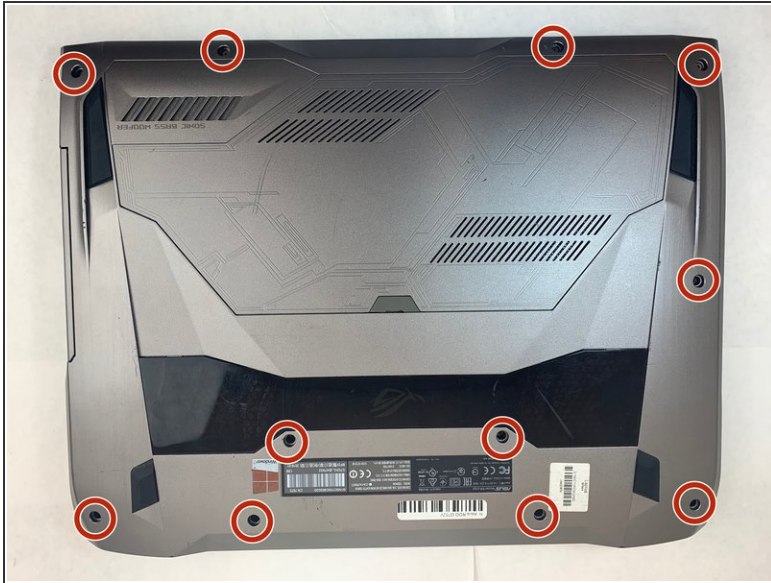
- [Phillips #00 Screwdriver](#) (1)
- [iFixit Opening Tools](#) (1)
- [Phillips #0 Screwdriver](#) (1)
- [Tweezers](#) (1)



PARTS:

- [Asus ROG G752V Wireless Card](#) (1)

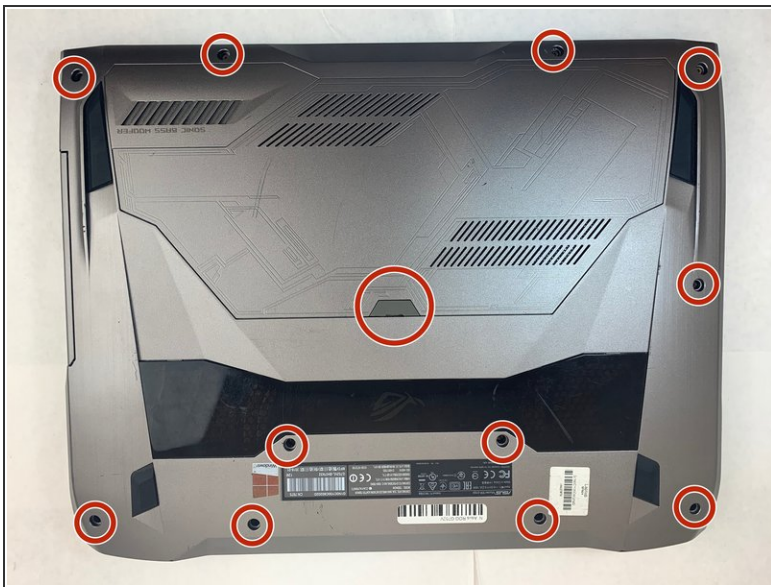
Step 1 — Keyboard



⚠ Make sure you disconnect the charger before starting this guide.

- Using a pair of tweezers, remove all 11 rubber plugs off of the back cover.

Step 2



- Using a Phillips #0 screwdriver, remove all twelve 5.2mm screws on the back of the laptop.

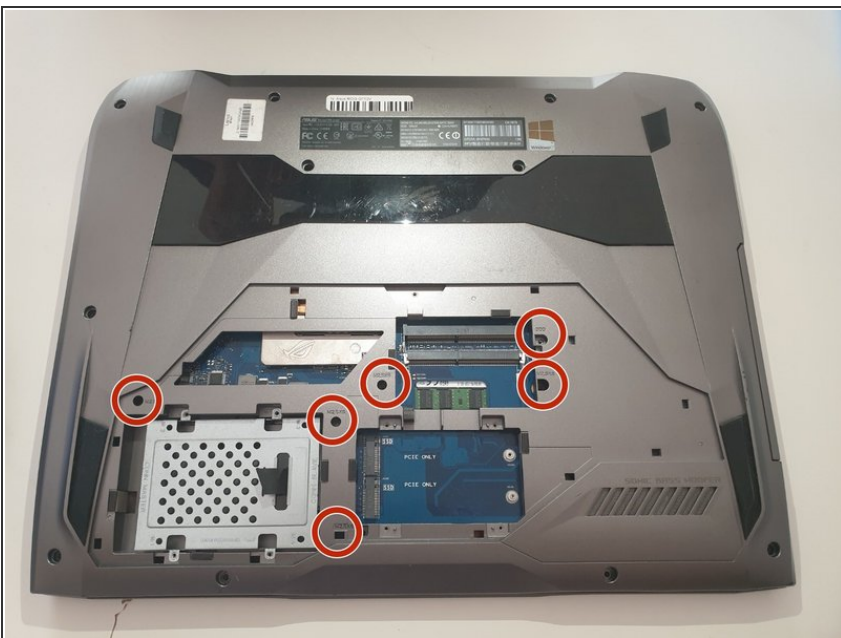
i There is one 5.2 mm screw under the rubber plug in the middle.

Step 3



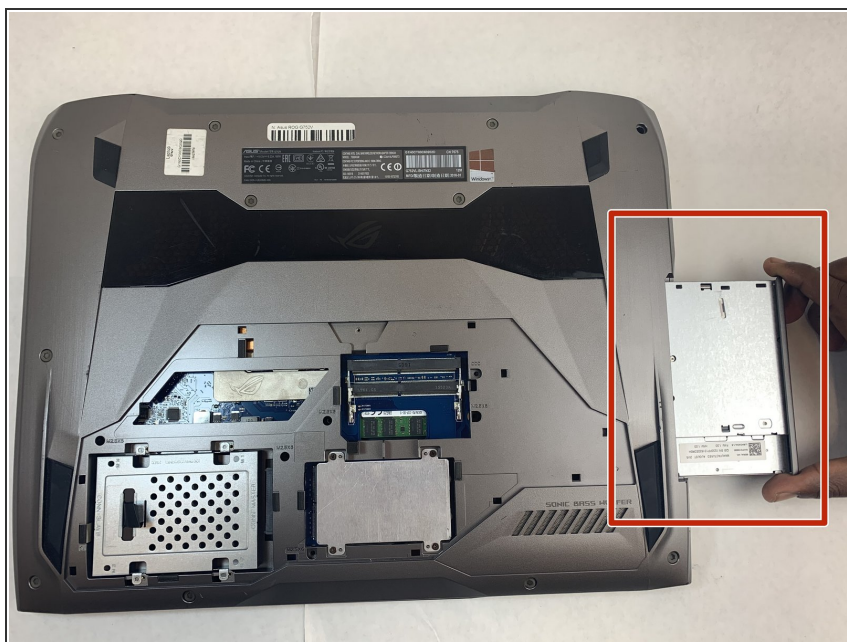
- Pull up the rubber seal and the service cover will come off.

Step 4



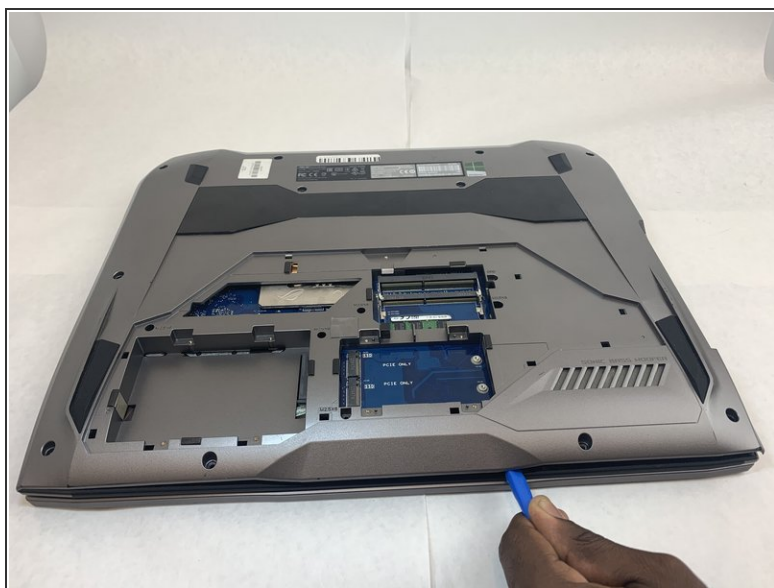
- Using the Phillips #00 screwdriver, remove the six 5.2 mm screws under the service cover.

Step 5



- Using your hands, pull the optical drive out.

Step 6



- Use the iFixit opening tool to pry apart the back panel from the main body of the laptop.
- ⓘ Start from the front side of the laptop and then continue to the side for easier access.

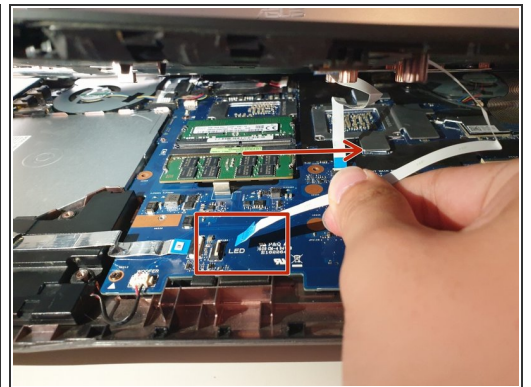
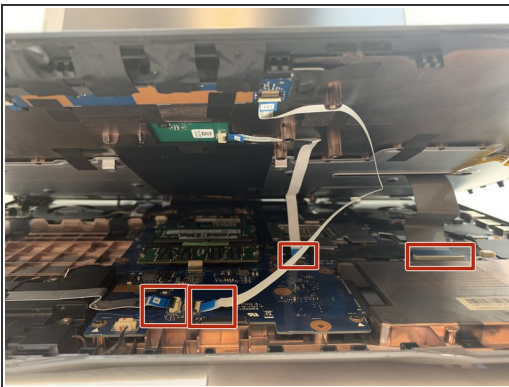
Step 7



- Slowly pull out the keyboard while lifting it about an inch.

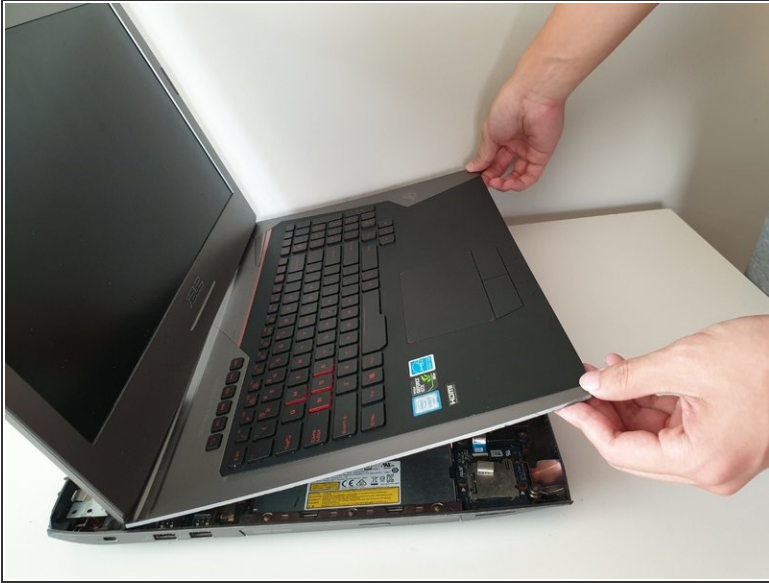
⚠ There are cables attached to the keyboard and motherboard. DO NOT lift it more than 2 inches above the laptop.

Step 8



- Using an ESD safe tool, detach all 3 ribbon cables. To do so, lift up the cable up and out.

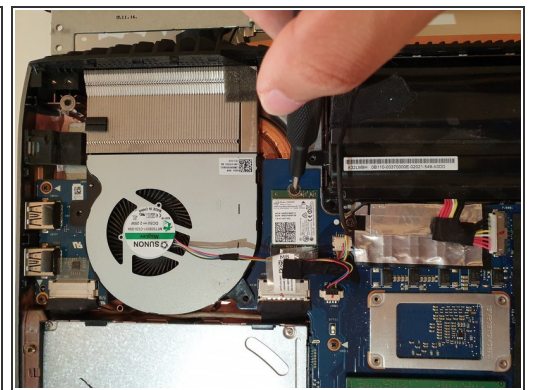
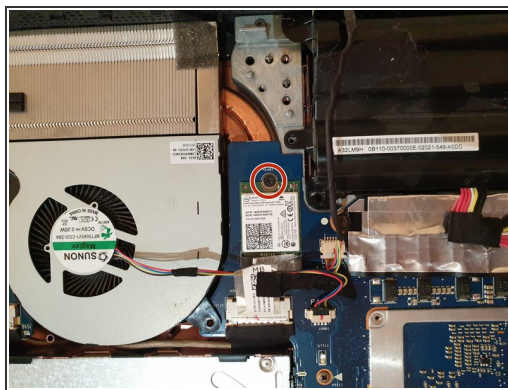
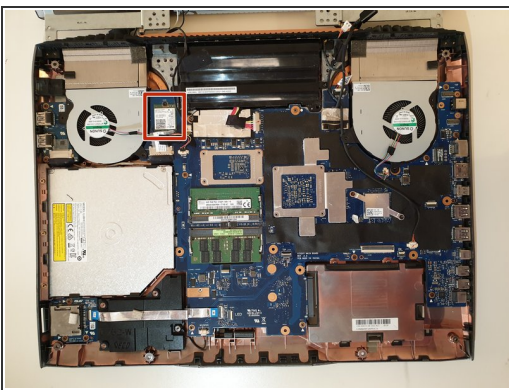
Step 9



- Once the cables are detached, lift the keyboard about 2 inches up and remove it from the rest of the body.

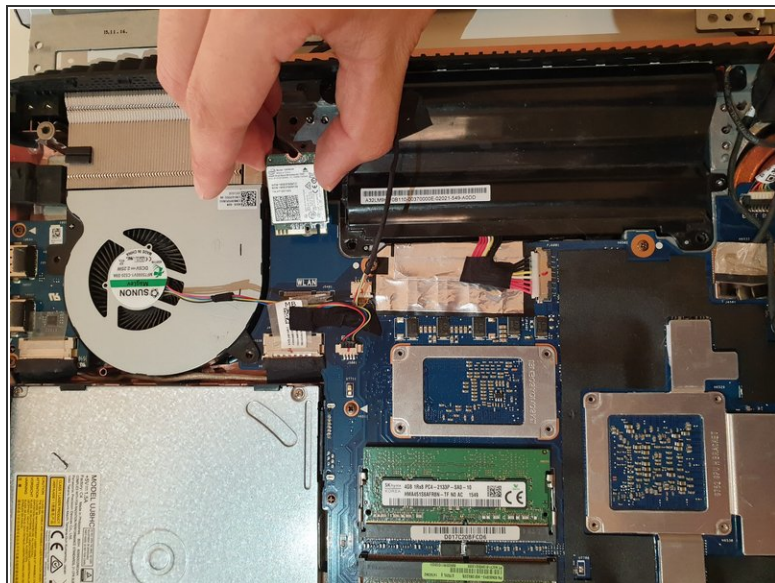
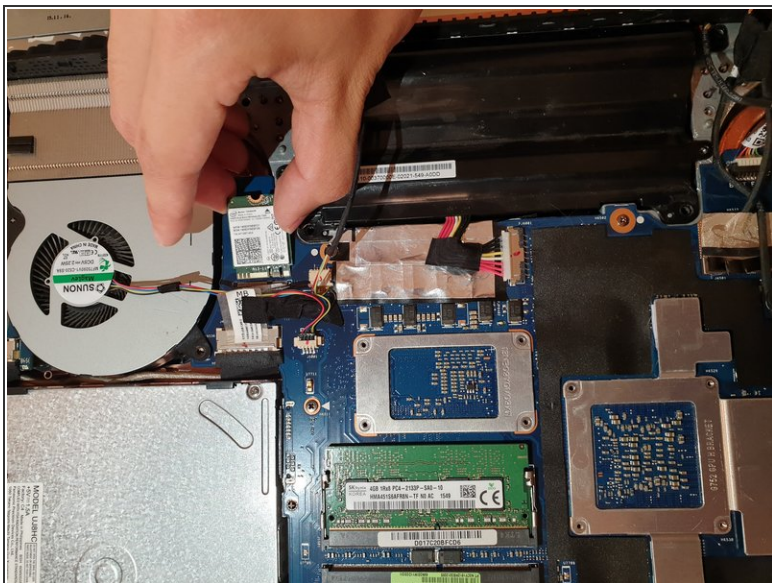
⚠ Make sure that the screen is open like the photo. This will ensure that none your laptop components will not be bent.

Step 10 — Wireless Card



- Unscrew one 3mm Philips #00 screw on the wireless card.

Step 11



- Using your hands, unlatch the wireless card by pulling it out toward the screen.

⚠ Gently wiggle the card and pull it out of the motherboard.

To reassemble your device, follow these instructions in reverse order.