



Asus ROG GL551J Optical Drive Replacement

An optical drive replacement guide for the Asus ROG GL551J

Written By: Philip Muino



INTRODUCTION

An optical drive replacement guide for the Asus ROG GL551J.



TOOLS:

- [Phillips #000 Screwdriver](#) (1)
-

Step 1 — Battery



- Lay device on a flat surface with battery facing up.

Step 2



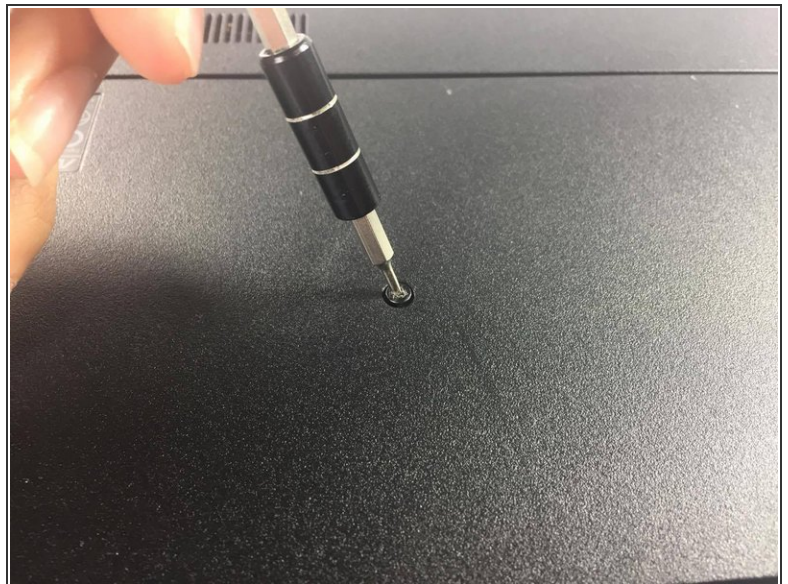
- Locate latch below battery and push right.

Step 3



- Battery should release upwards. Pull battery out.

Step 4 — Optical Drive



- Locate and unscrew the screw which connects the optical drive to the chassis

Step 5



- Grasp the edge of the optical drive

Step 6



- Pull on the optical drive gently. With little resistance, the optical drive should just slide out

To reassemble your device, follow these instructions in reverse order.