

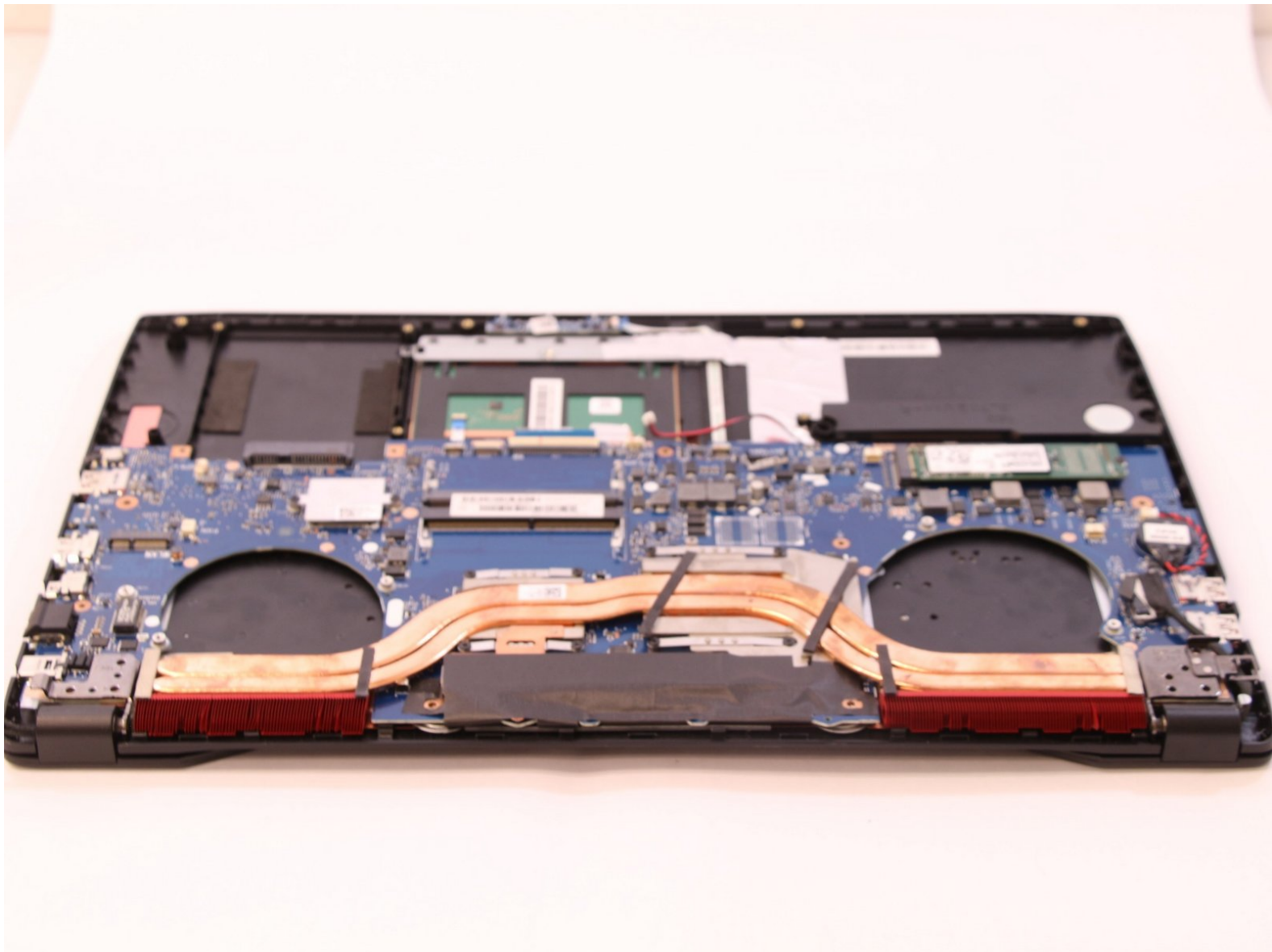


Asus ROG Strix GL702VM-BHI7N09

Motherboard Replacement

This guide details how to replace the motherboard on an Asus ROG Strix GL702VM-BHI7N09 gaming laptop.

Written By: Gunnar Hudson



INTRODUCTION

The motherboard is a critical part of any computer, housing the central processor unit that data flows through. The Asus ROG Strix GL702VM-BHI7N09 gaming laptop is no exception and cannot function without a working motherboard. This guide shows how to replace this vital component.

This process does not require advanced skills such as soldering.



TOOLS:

- [iFixit Opening Tools](#) (1)
 - [Phillips #1 Screwdriver](#) (1)
 - [Small Chain Nose Pliers](#) (1)
-


Step 1 — Back Panel




- Flip the laptop over to the back panel, with the serial numbers facing up.
- Using a Phillips #1 screwdriver, remove the ten 12 mm screws from the back panel.

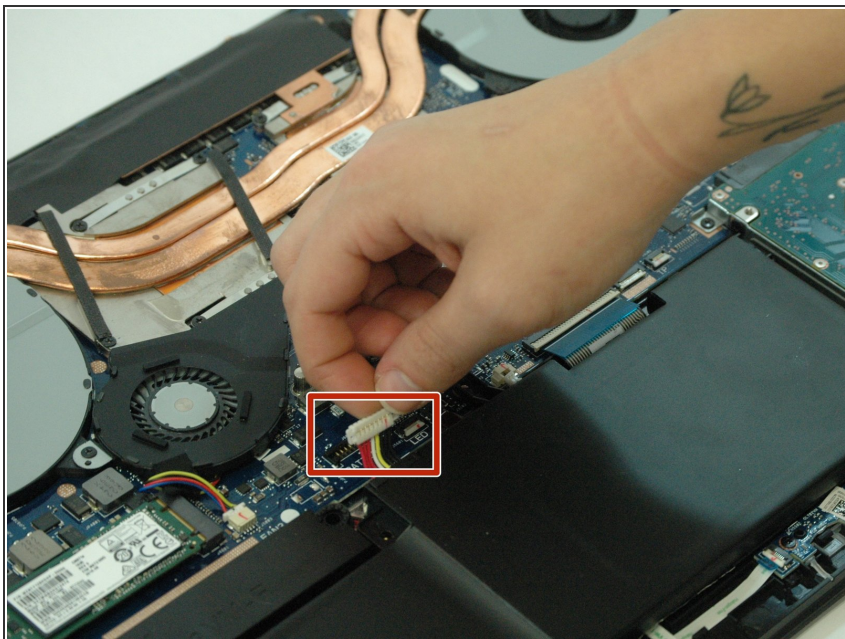
Step 2



 The snap seals don't need a lot of pressure to open, and may break if forced. Be gentle with the opening tool.

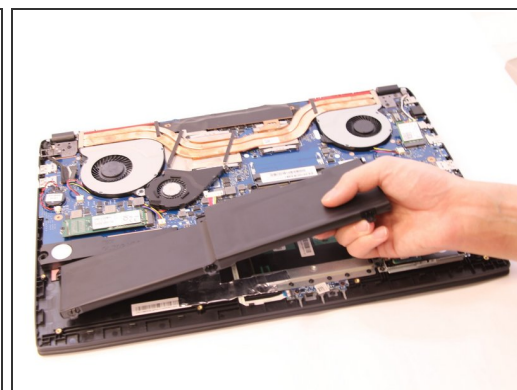
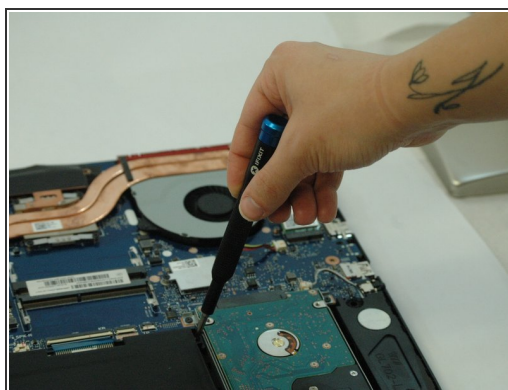
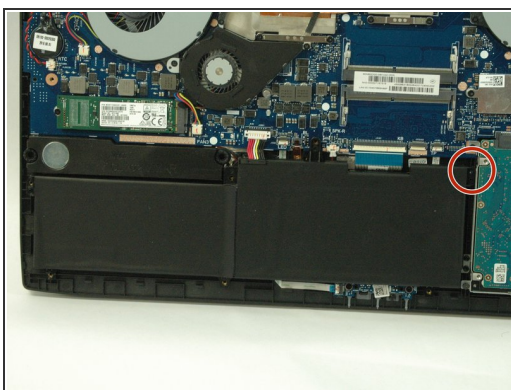
- Wedge the sharp edge of the plastic opening tool into the seam between the back panel and the rest of the laptop, then gently pry the panel up.
 -  There will be a snapping sound as you remove the back panel, but that is just the seal loosening.
- Continue breaking the seals by sliding the plastic opening tool around the entire laptop under the seam until the back panel is free.
- Once you have broken all the seals, carefully lift the panel off.

Step 3 — Battery



- Unplug the battery from the motherboard.

Step 4



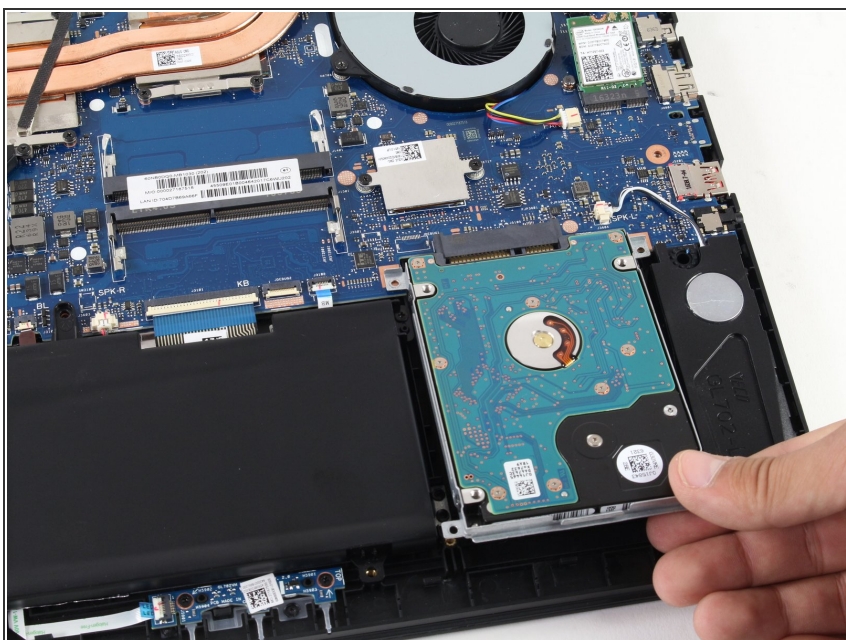
- Unscrew the 3.8 mm Phillips #01 head screw on the top right hand corner of the battery.
- Lift battery from laptop frame.

Step 5 — Hard Drive



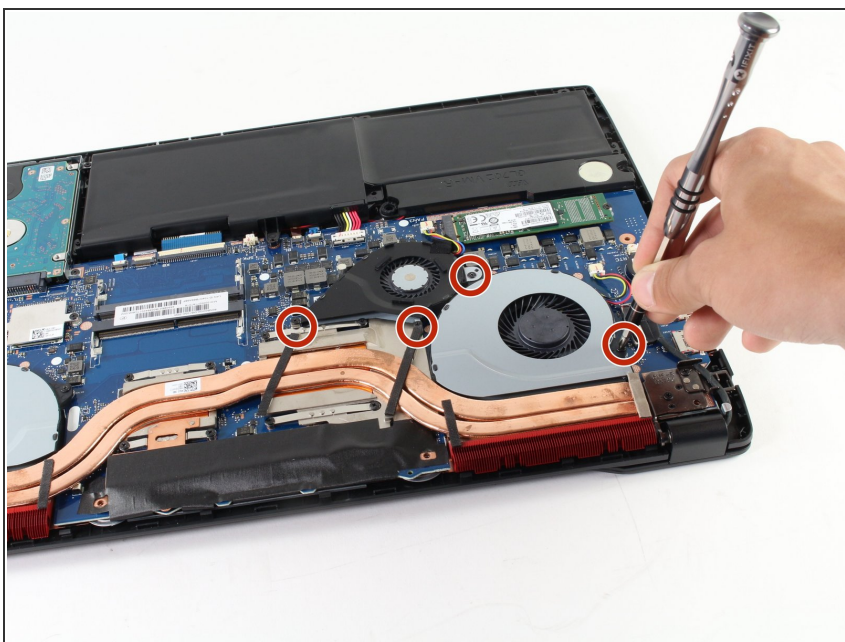
- Using a Phillips #1 screwdriver, remove the four 4 mm screws holding the hard drive.

Step 6



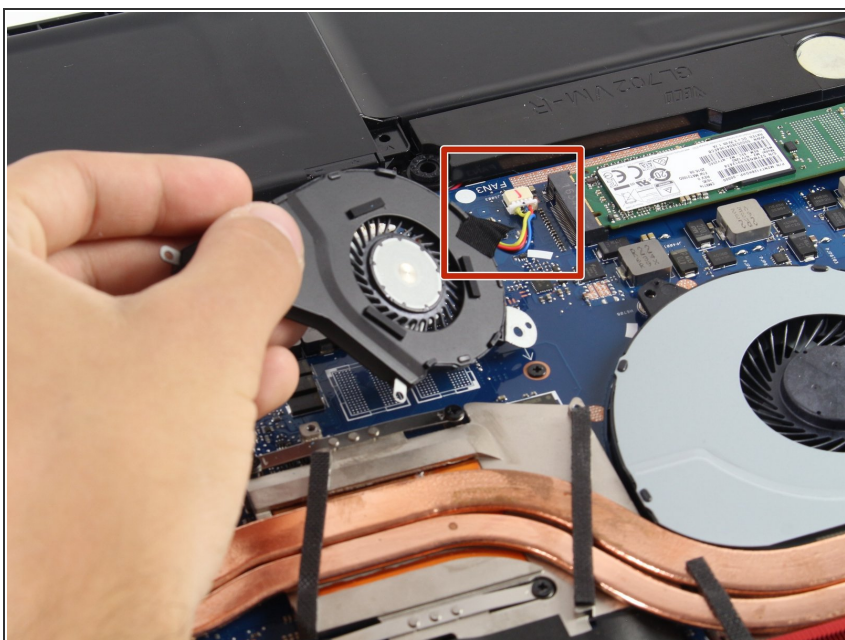
- Pull the hard drive directly away from the fan just above it.
- ⓘ The connecting pins should slide out easily, but you might have to move the hard drive around a bit to loosen the pins.

Step 7 — Fan



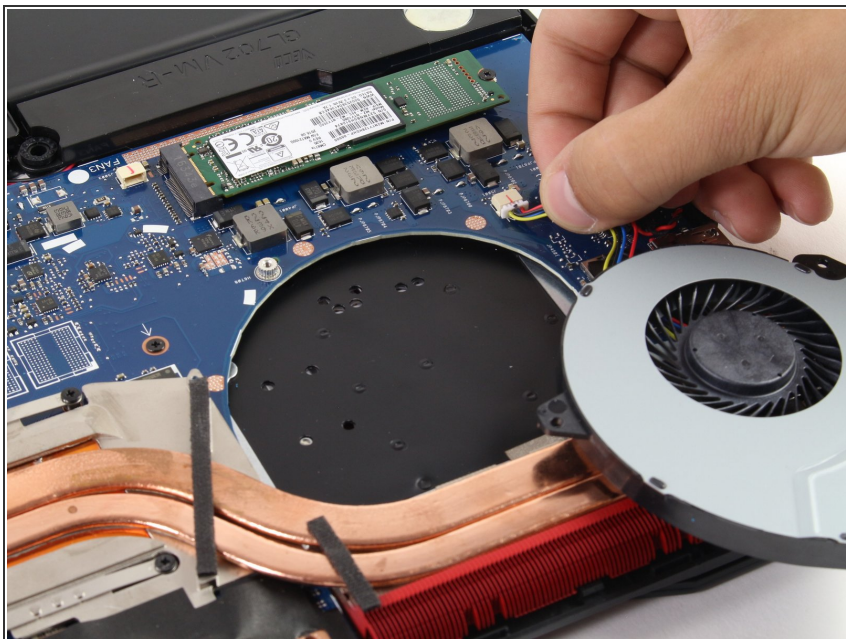
- Using a Phillips #1 screwdriver, remove the four indicated 4 mm screws that hold the black fan and the silver one adjacent to it.

Step 8



- ⓘ The smaller black fan must be removed before the larger gray fan on the right can be taken out.
- To remove the black fan, pull gently on the connecting cables outlined.

Step 9



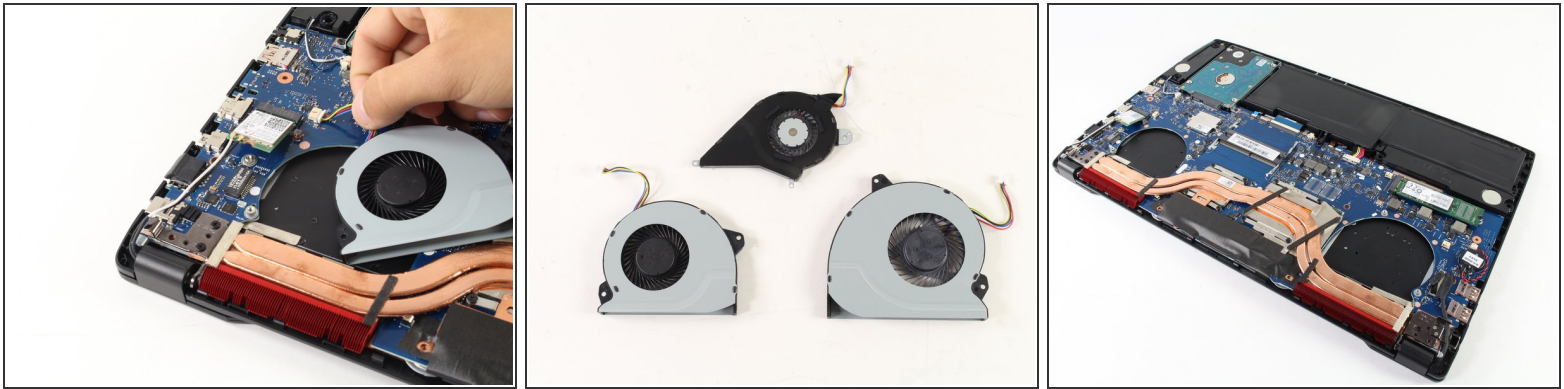
- Unplug the white connector by gently pulling the cables.
- Lift off the gray fan.

Step 10



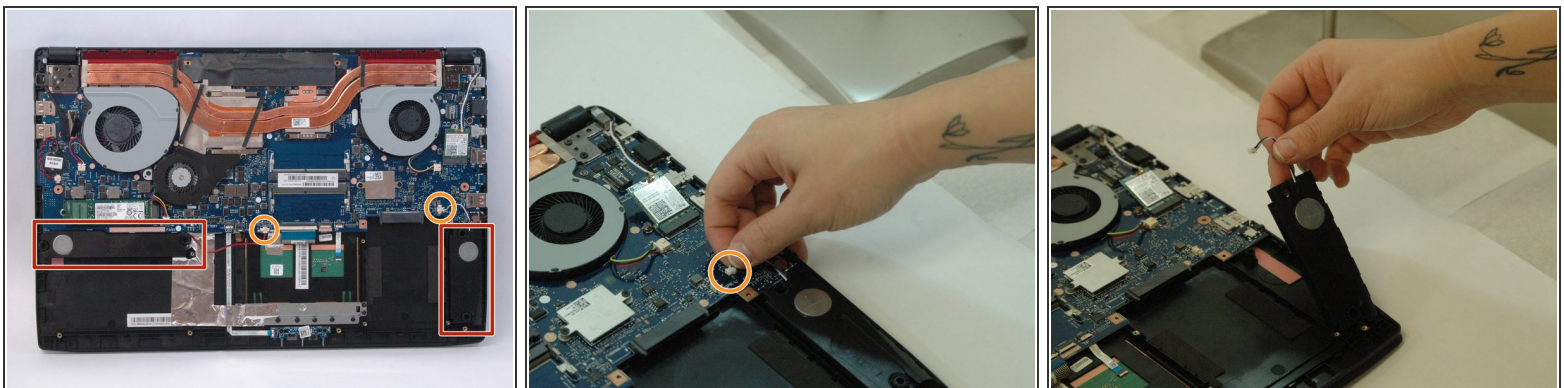
- Using a Phillips #1 screwdriver, remove the two indicated 4 mm screws from the other gray fan.

Step 11



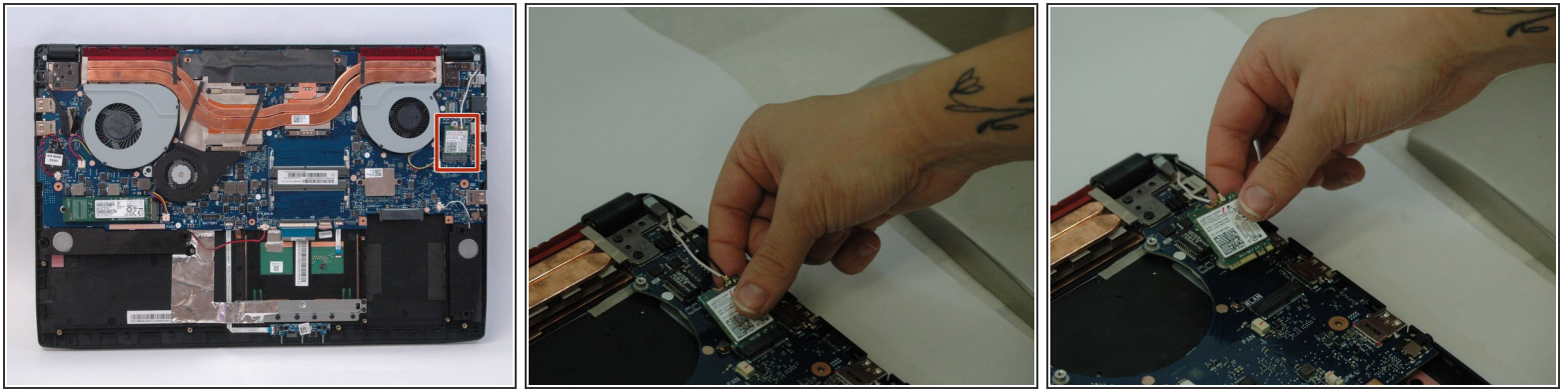
- Unplug the white connector by gently pulling it towards the center of the computer.
- Lift the fan out of the body of the laptop to remove it.

Step 12 — Motherboard



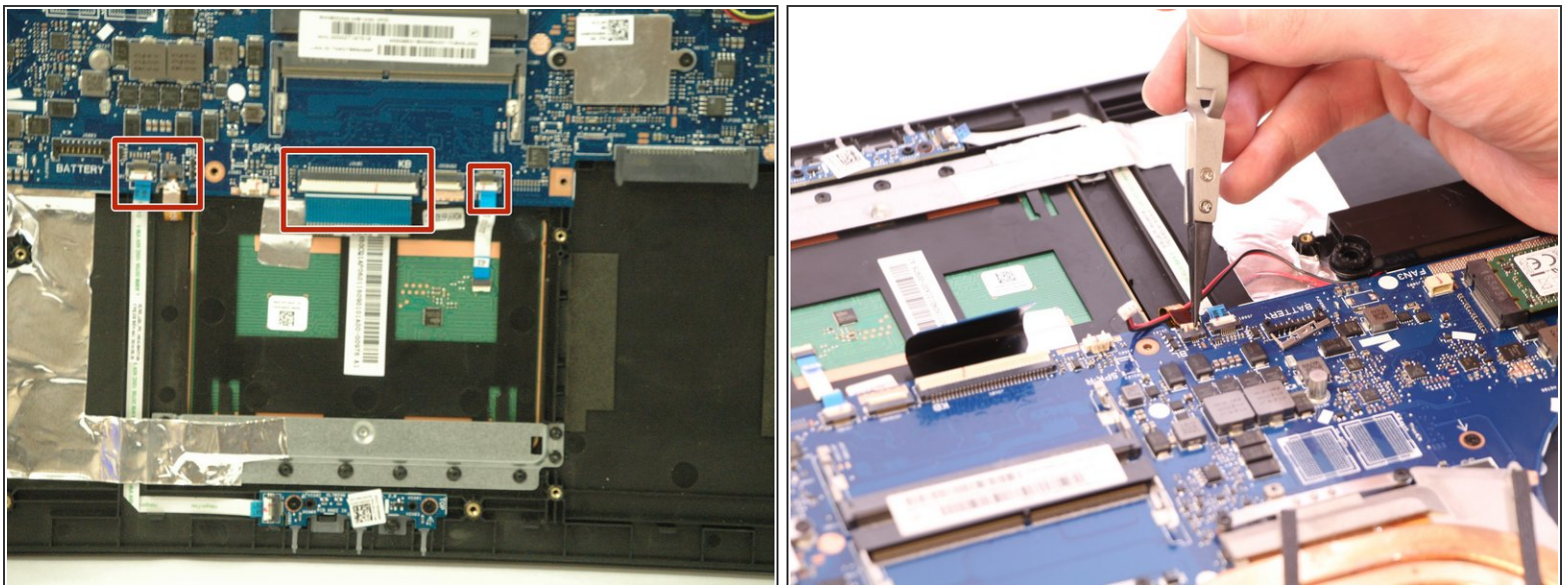
- Disconnect the speakers connectors located in each of the bottom corners.
- Gently pull the wire up from the motherboard.
- Once the wire is disconnected, pull the speaker out.

Step 13



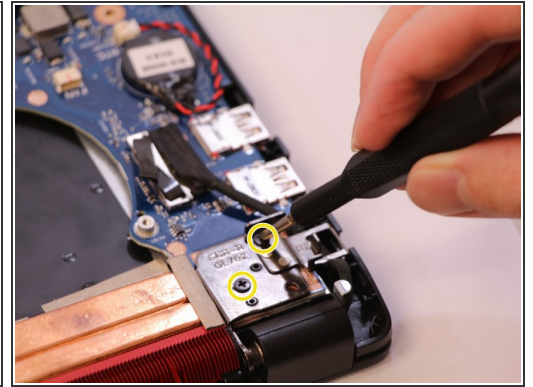
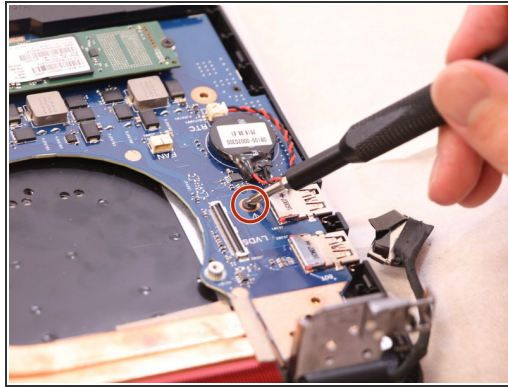
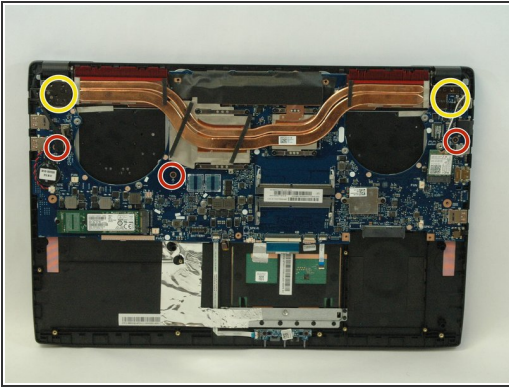
- Gently lift the graphics card from the motherboard.

Step 14



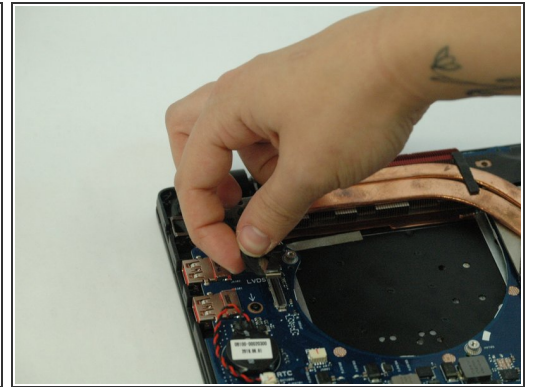
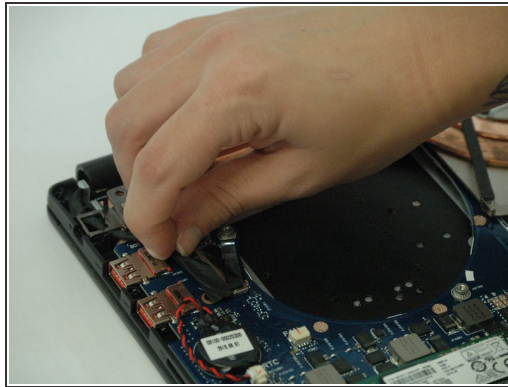
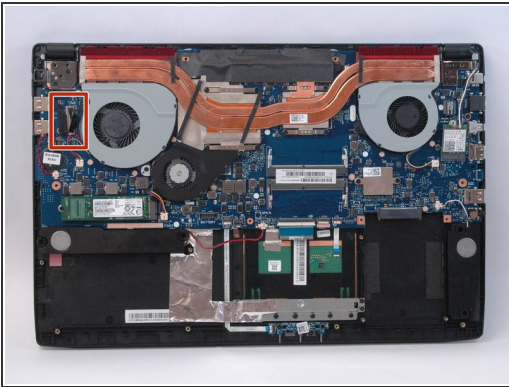
- Use reverse pliers to detach ribbon connectors from the motherboard.

Step 15



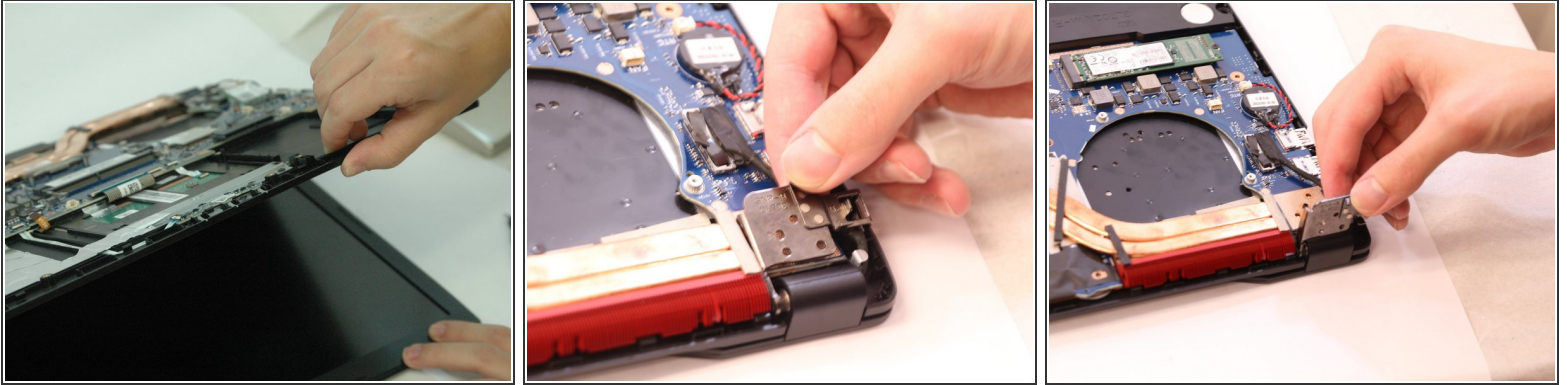
- Remove each of the 4.7 mm Phillips #1 screws marked by a white arrow on the motherboard.
- Remove the 6.7 mm Phillips #1 screws from the metal latches on the hinge-side corners.
- ⓘ The 4.7 mm Phillips #1 screw on the far left of the motherboard is covered by the black connecting wire in Step 5.

Step 16



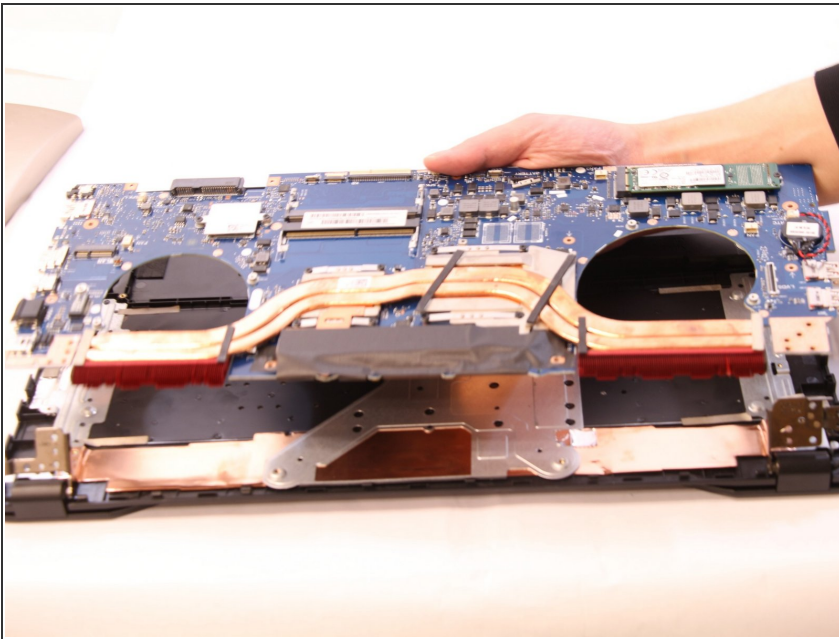
- Gently pull on black connecting wire to disconnect the monitor screen from the motherboard.
- ⓘ This will uncover the far left 4.7 mm Phillips #1 screw.

Step 17



- Lift the metal latches on both sides.
- This can be easily done by opening the laptop after the metal latch screws have been removed.

Step 18



- Remove the motherboard from the laptop frame.
- ⓘ You will need to pull the motherboard to the side as well as lifting it to free its various ports from the sides of the laptop case.
- ⚠ There is adhesive attaching the final ribbon connector to the bottom of the motherboard. This will need to be removed.

To reassemble your device, follow these instructions in reverse order.