



# Asus ROG ZX50VW-BH17N10 CD Drive Replacement

Use this guide to remove the CD Drive/Optical drive in your Asus ROG ZX50VW-BH17N10.

Written By: Naomi Rodriguez



---

## INTRODUCTION

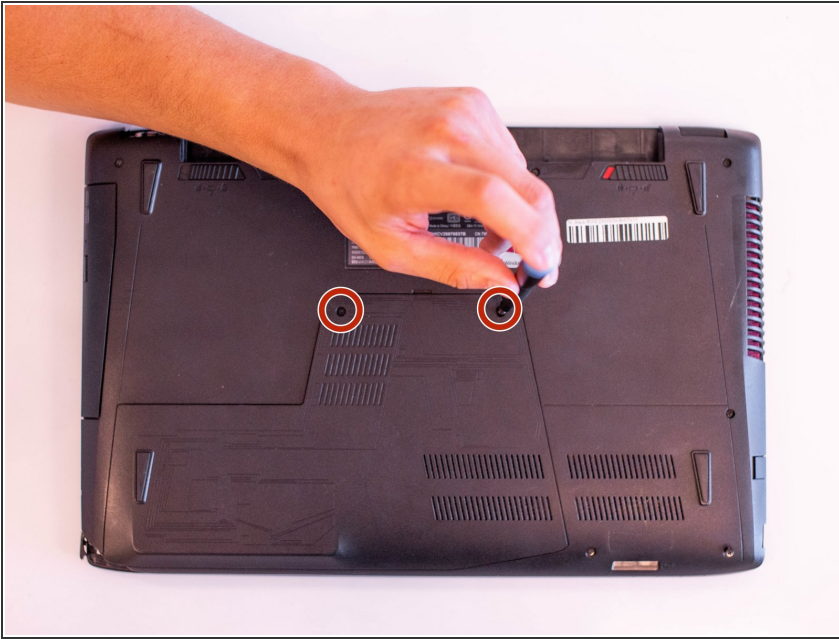
The CD drive is a component that is susceptible to fail overtime. Generally, a failing CD drive makes clicking sounds, and the disks inserted cannot be read by the computer. If your CD drive is no longer reading the CD disk or making clicking sounds, it might be time to replace the CD drive. This guide will walk you through the steps needed to remove the CD drive from your device.



### TOOLS:

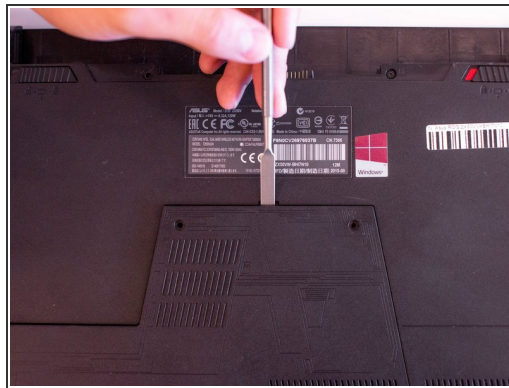
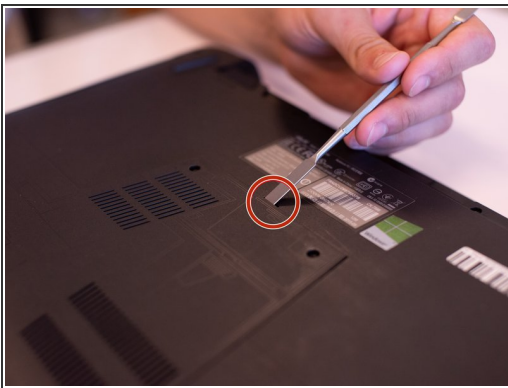
- [Phillips #1 Screwdriver](#) (1)
  - [Metal Spudger](#) (1)
-

## Step 1 — CD Drive



- Remove the 9 mm and 16 mm screws on the back panel using the Philips #1 screw driver.

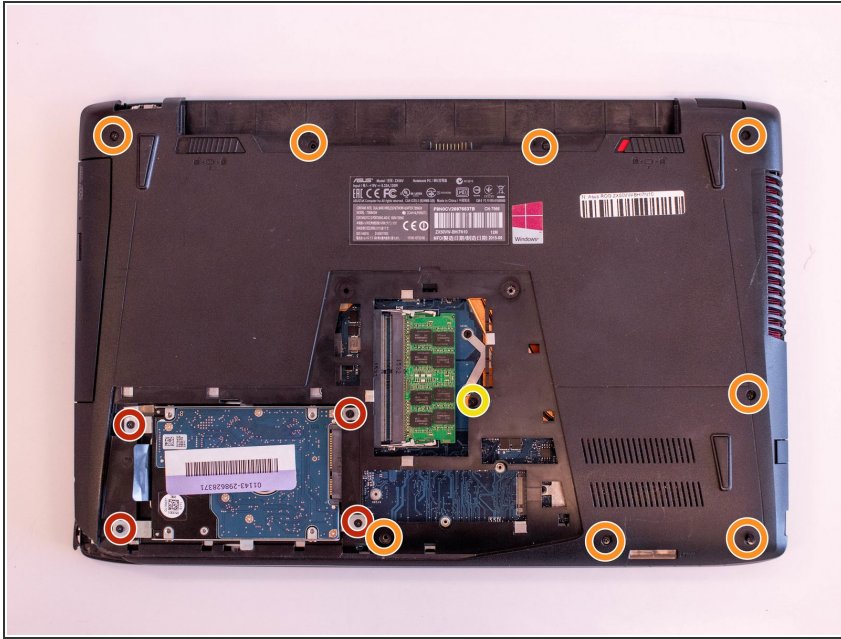
## Step 2



- Use the metal spudger to pry the back panel off.

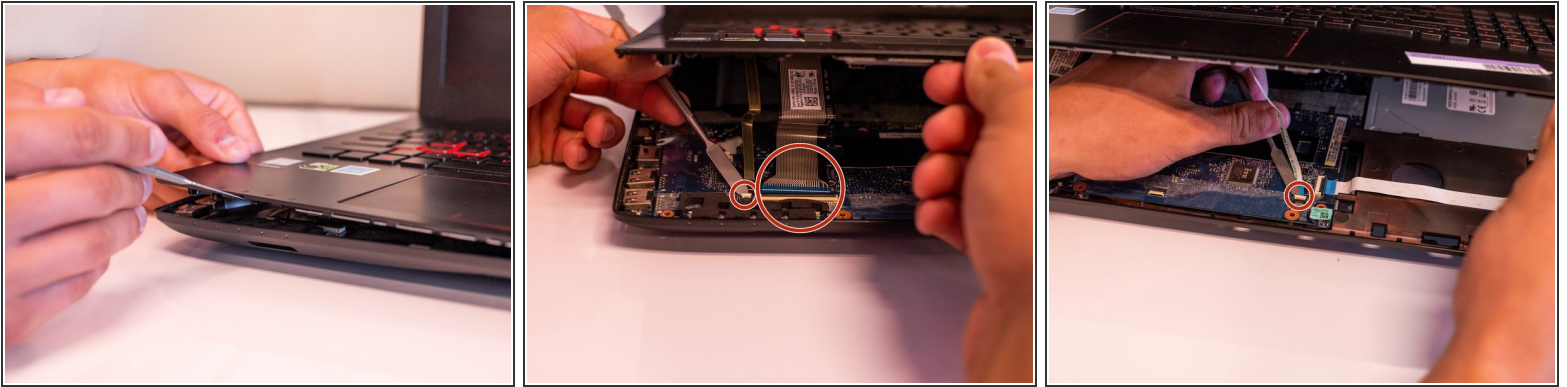


## Step 3




- i** The following screws are removed using the Phillips #1 screwdriver.
- Remove the four 9 mm screws from the hard drive and use the black pull tab to remove it.
  - Remove the five 1.6 mm screws and three 9 mm screws from perimeter of the laptop's base.
  - Remove the 9 mm screw next to the RAM.
  - Flip the computer right-side up.
- !** Caution when flipping the computer. Components may shift around and the hard drive will fall out if not removed prior to flipping.

## Step 4



- Gently pry the keyboard off being careful not to tug at any of the inner ribbons.


 Using a metal spudger may cause damage to the internal components to the device. The ribbons are very fragile and can be severed easily.

- Detach the three ribbons connecting the motherboard and the keyboard. Do this by flipping up the white latch and pulling the ribbon out. There should be one latch per ribbon.

## Step 5



- Gently remove the the keyboard.

 Caution. There should be nothing attached to the keyboard at this point.

## Step 6



- Use the metal spudger to push out the CD drive in the same direction it ejects.

To reassemble your device, follow these instructions in reverse order.