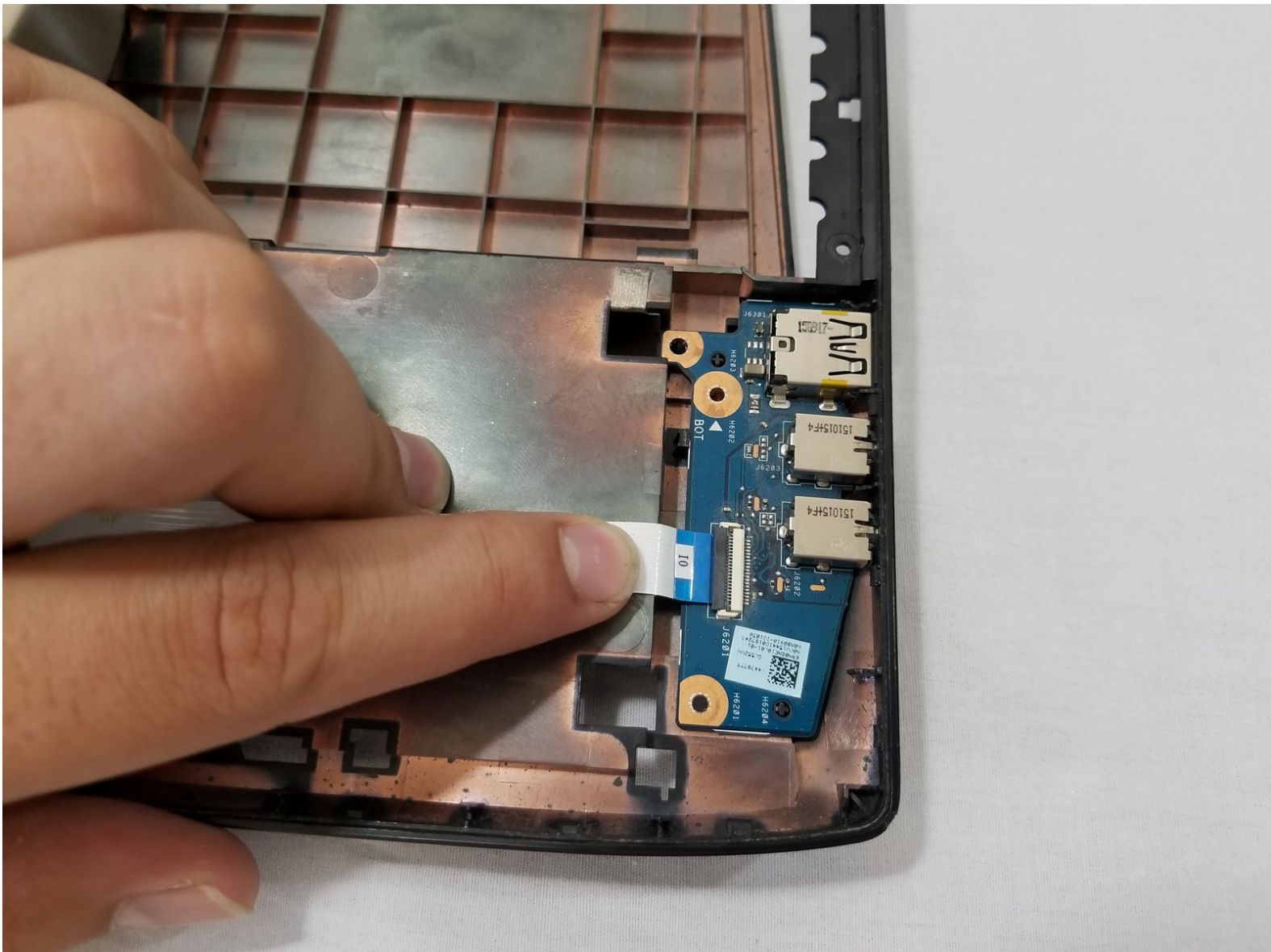




Asus Rog GL55VW-DH71 USB port Replacement

This guide will show how to replace the USB module, in the event that you have a port that is inoperable.

Written By: Addison Thomas



INTRODUCTION

This guide will teach you how to remove and replace the USB module in the event that it doesn't work properly. Special care must be taken, due to the delicate parts and ribbon cables needed to be removed during the repair.



TOOLS:

- [iFixit Opening Tools](#) (1)
 - [Phillips #00 Screwdriver](#) (1)
-

Step 1 — Battery



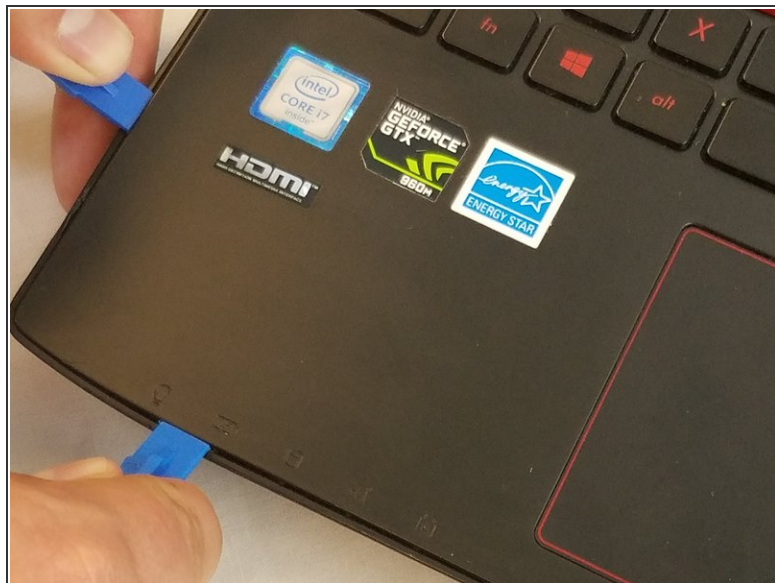
- Flip the laptop over so the backside is facing upwards.
- Using both hands, slide the lock mechanisms outwards and pull up to remove the battery.

Step 2 — Keyboard



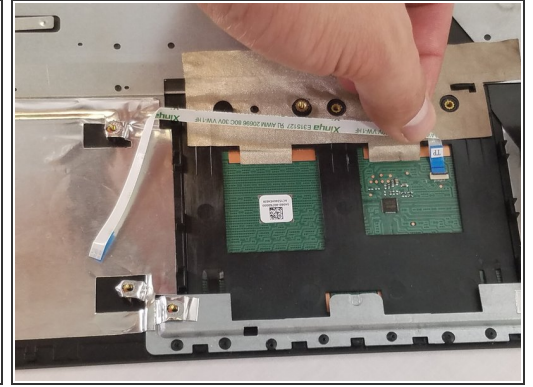
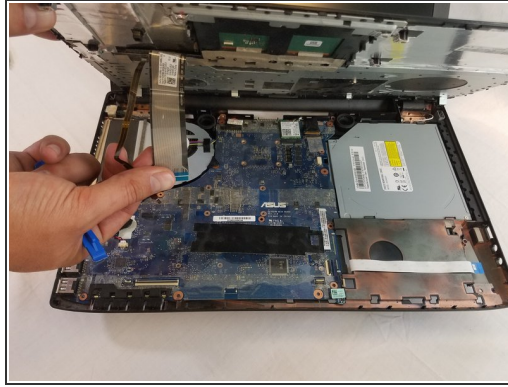
- Remove the nine 15.4mm Phillips #00 screws.
- Remove the four 8.7mm Phillips #00 screws from the hard drive mounting bracket.
- Remove the hard drive bracket.

Step 3



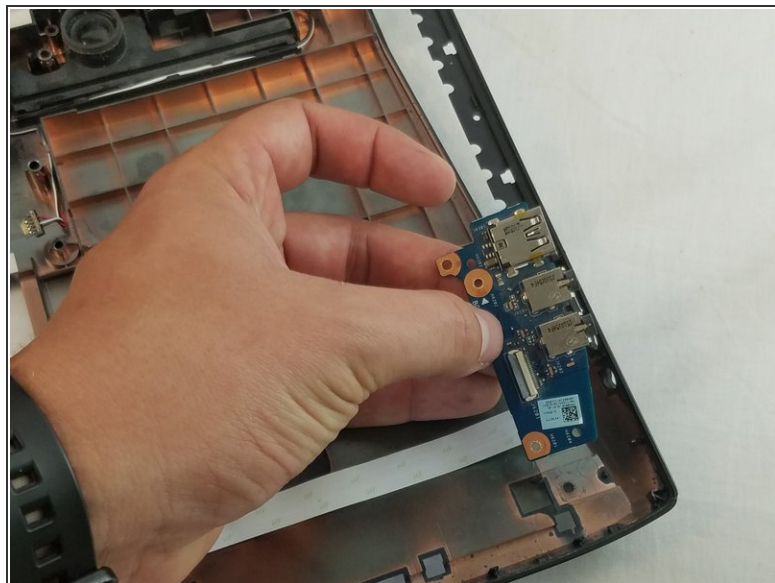
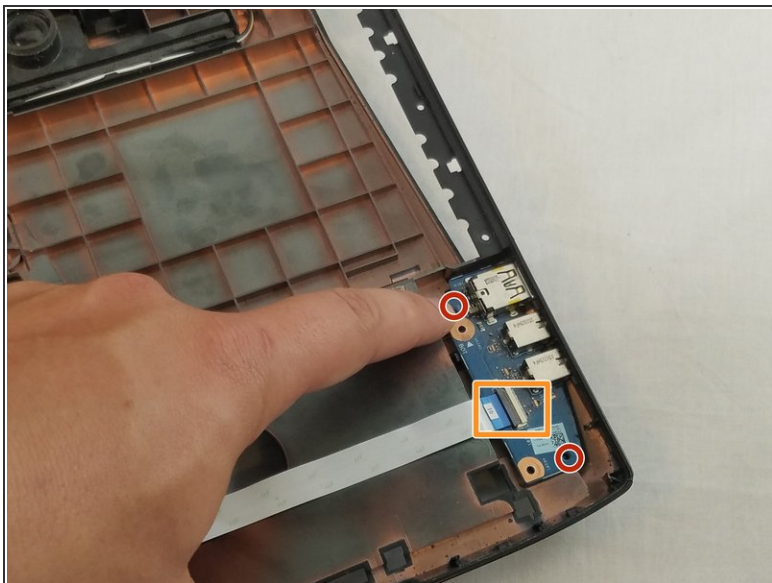
- Flip laptop over and open the screen.
 - Wedge some plastic opening tools between the keyboard and case.
 - Work your way around with the plastic opening tools until the keyboard is separate from the case.
- ⚠ Do not try to lift the keyboard straight off at this time. There are some ribbon cables that attach the motherboard to the keyboard that need to be removed first.


Step 4



- Remove the ZIF connected ribbon cables for the touchpad and keyboard by gently lifting the latch on the connector point, then slide the ribbon cable out. Repeat for each cable.
- Verify all ribbon cables are disconnected and out of the way, and lift the keyboard out of the assembly.

Step 5 — USB port



 The pictures shown are taken with the motherboard removed. This is not required for the replacement of the USB module.

- Remove the two 2.8mm Phillips #00 screws.
- Carefully remove the ZIF connector ribbon cable from the module by lifting up on the latch and pulling the cable out.

To reassemble your device, follow these instructions in reverse order.