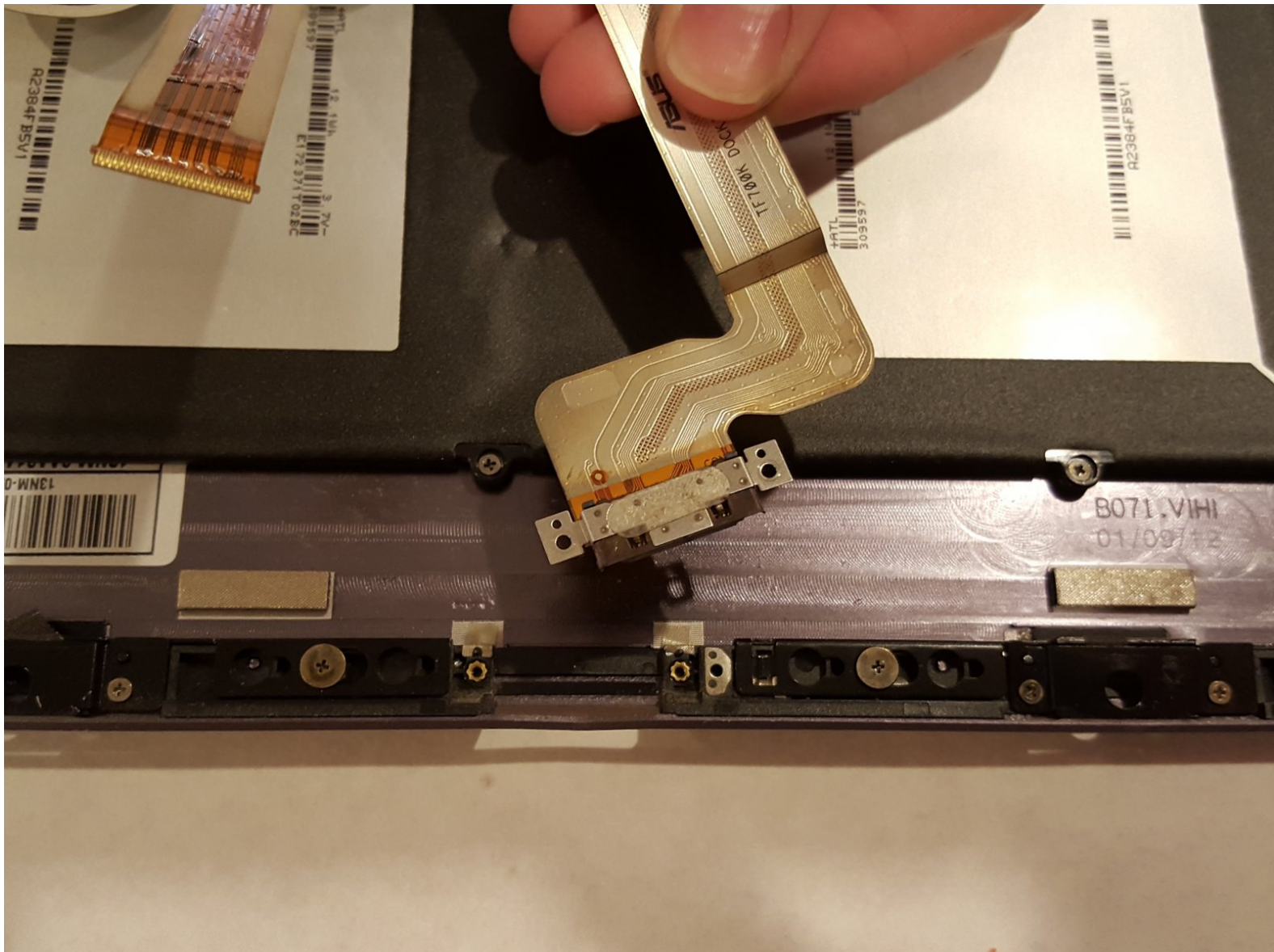




# Asus Transformer Pad Infinity Charging Port Replacement

This guide will demonstrate how to replace the charger port.

Written By: Allison Poh



## INTRODUCTION

Replacing the charging port involves opening up the device. Prerequisites; follow the [Asus Transformer Pad Infinity Teardown](#) link up to step 6 to remove the charging port.



### TOOLS:

- [Phillips #000 Screwdriver](#) (1)
- [Tweezers - Pro/ESD/Angled](#) (1)
- [Spudger Plastic opening tool screwdriver](#) (1)
- [Anti-Static Wrist Strap](#) (1)

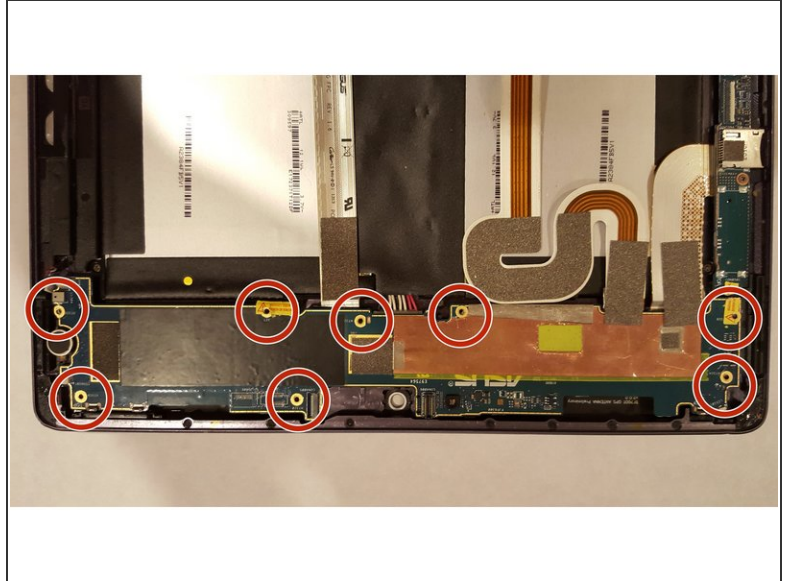
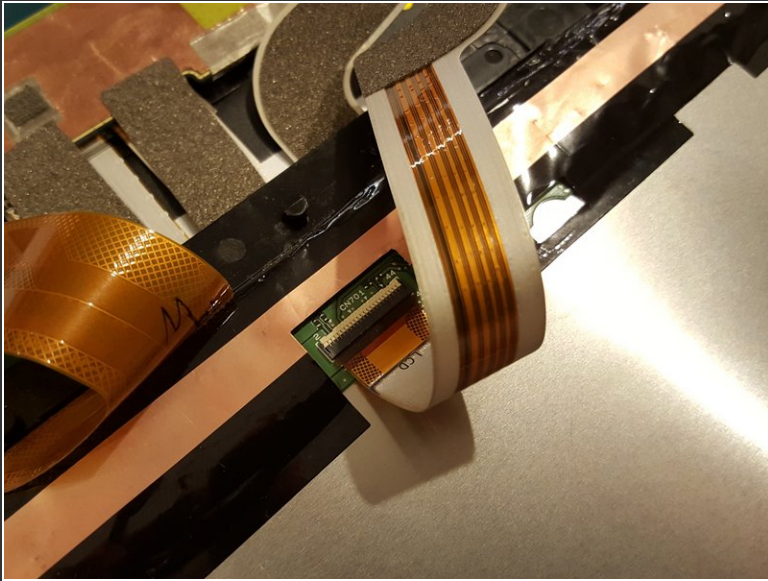
*optional*



### PARTS:

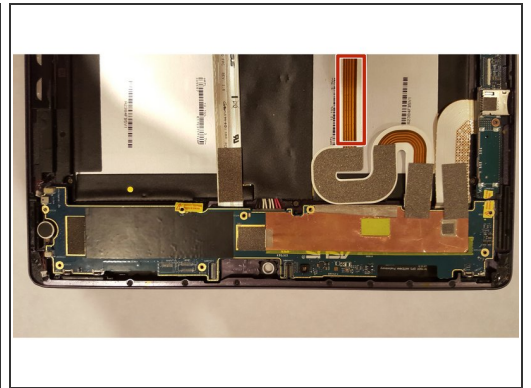
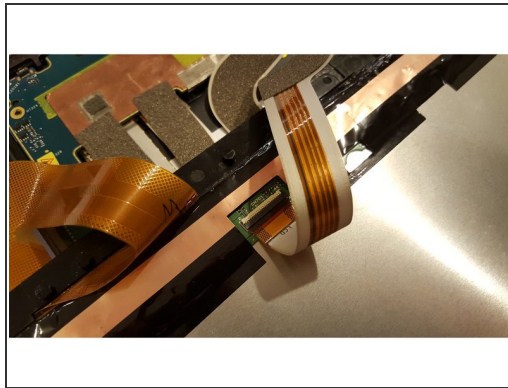
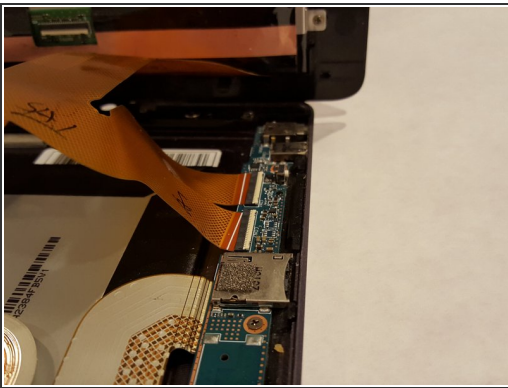
- [ASUS Transformer Pad Infinity Charging Port](#) (1)

## Step 1 — Charging Port



- Take off the screen and the big motherboard.

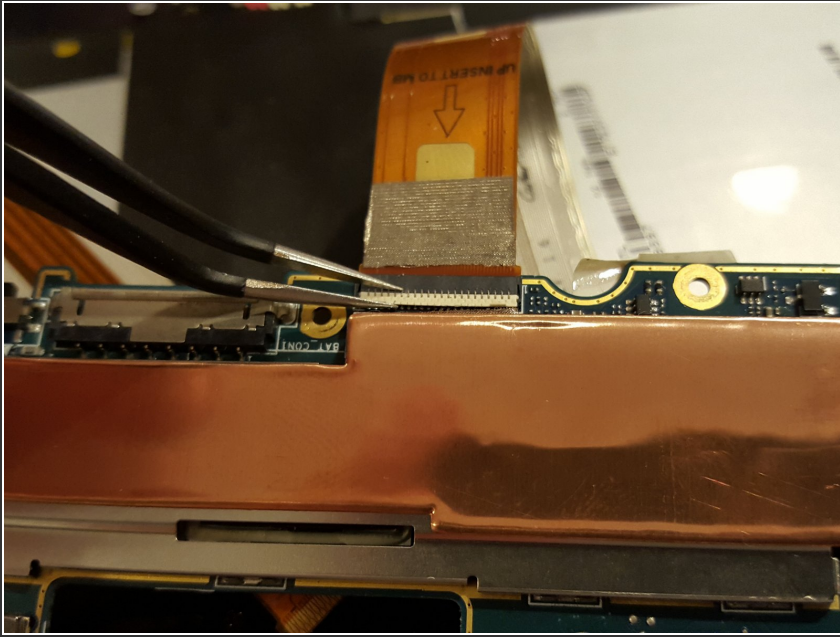
## Step 2



- Disconnect the long silver ribbon connector from the screen.
- Remove the orange ribbon connector with the two connections.

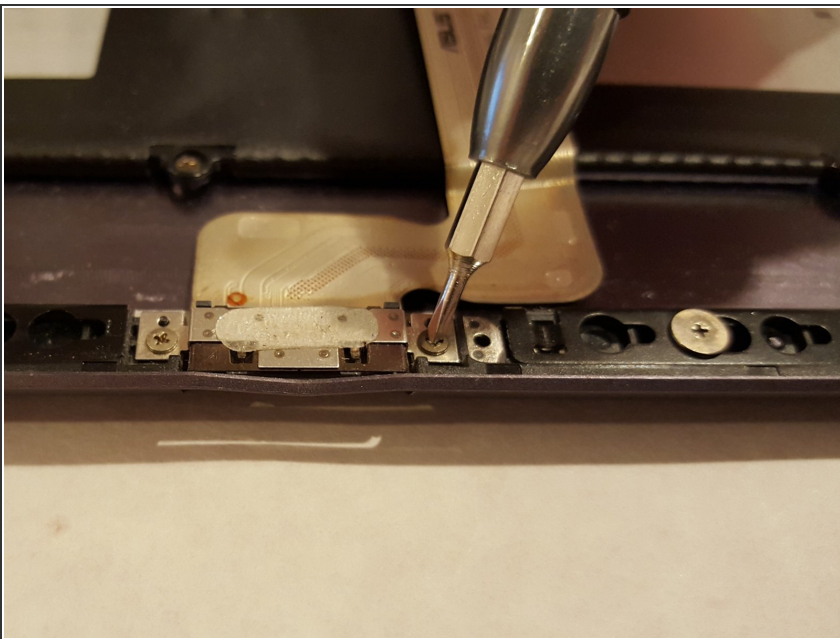


### Step 3



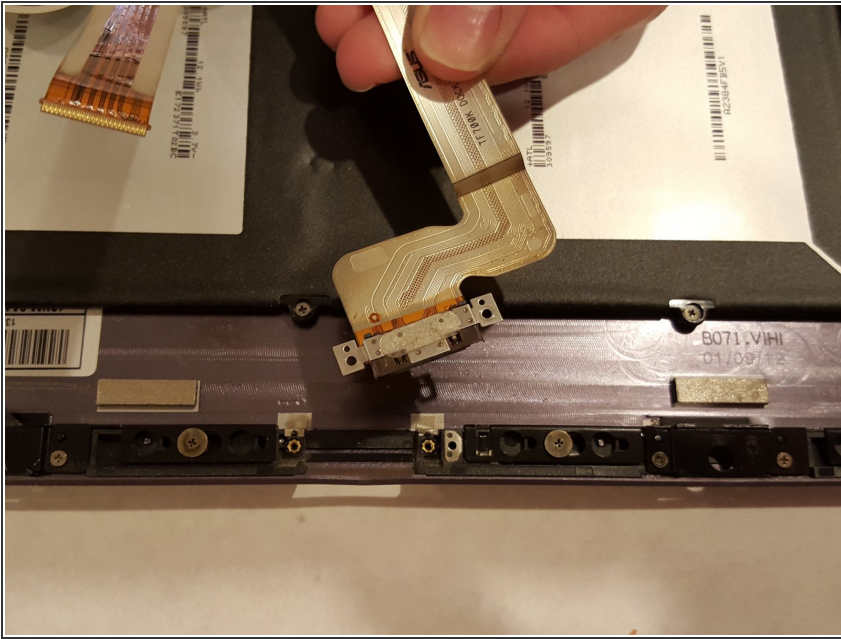
- Flip up the piece securing the ribbon to the big motherboard and remove the ribbon from the motherboard.
- Note: This will have tape covering it, make sure not to cut the ribbon or scratch any other parts if you are looking to preserve these things.

### Step 4



- Remove the two screws holding the actual port, that goes to the outside of the device, in. This piece will be connected to the case.

## Step 5



- Once removing the damaged charging port, put in your new part and reassemble the device and check if the new charging port works.

To reassemble your device, follow these instructions in reverse order.