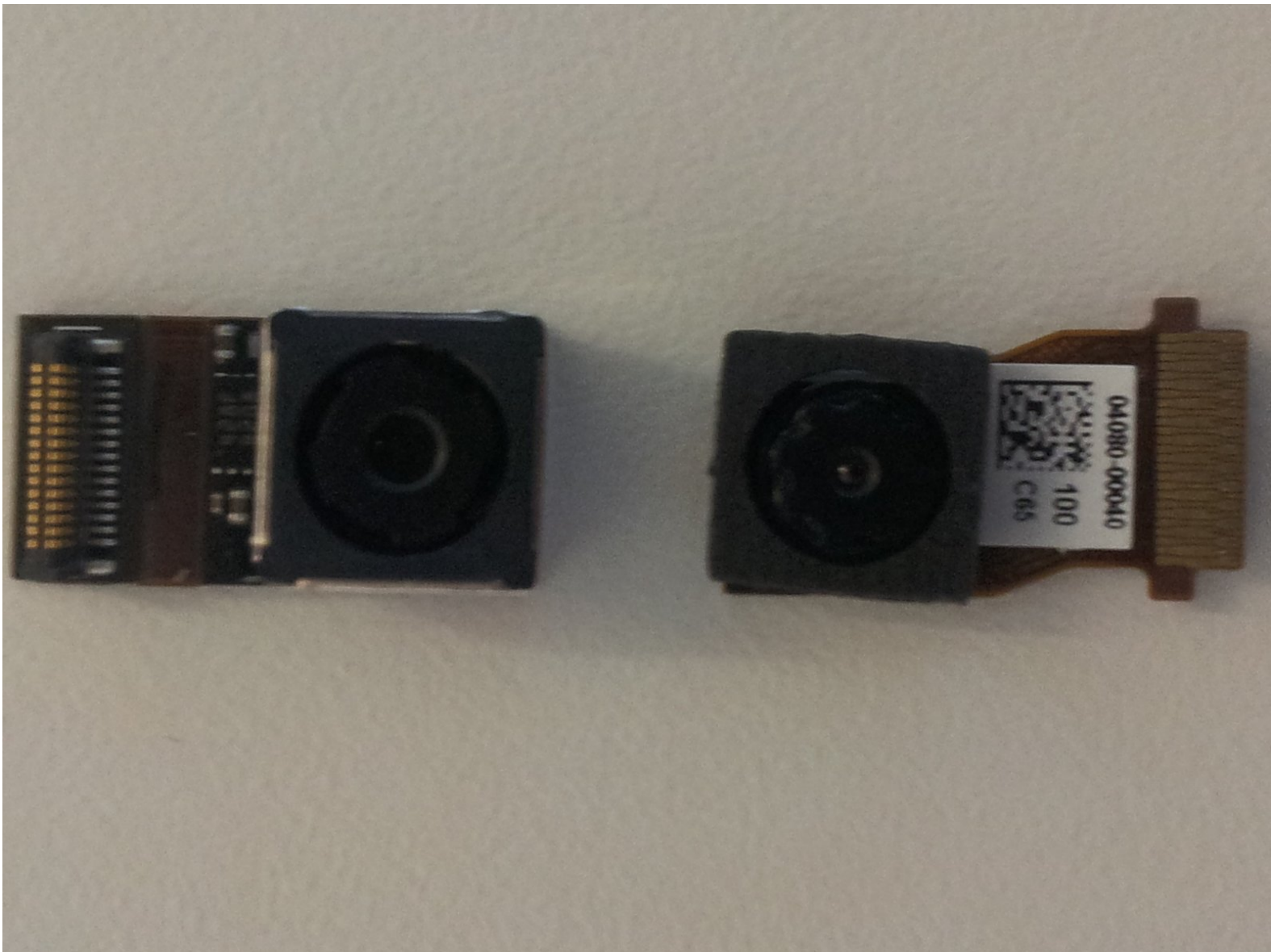




Asus Transformer Pad Infinity Rear/Front Facing Camera Replacement

This guide will demonstrate how to replace the rear facing camera and the front facing camera of the device.

Written By: Allison Poh



INTRODUCTION

Replacing the cameras involves opening up the device. Prerequisites; follow the [Asus Transformer Pad Infinity Teardown](#) link up to step 6 to remove the cameras.



TOOLS:

- [Phillips #000 Screwdriver](#) (1)
- [Tweezers - Pro/ESD/Angled](#) (1)
- [Spudger Plastic opening tool screwdriver](#) (1)
- [Anti-Static Wrist Strap](#) (1)

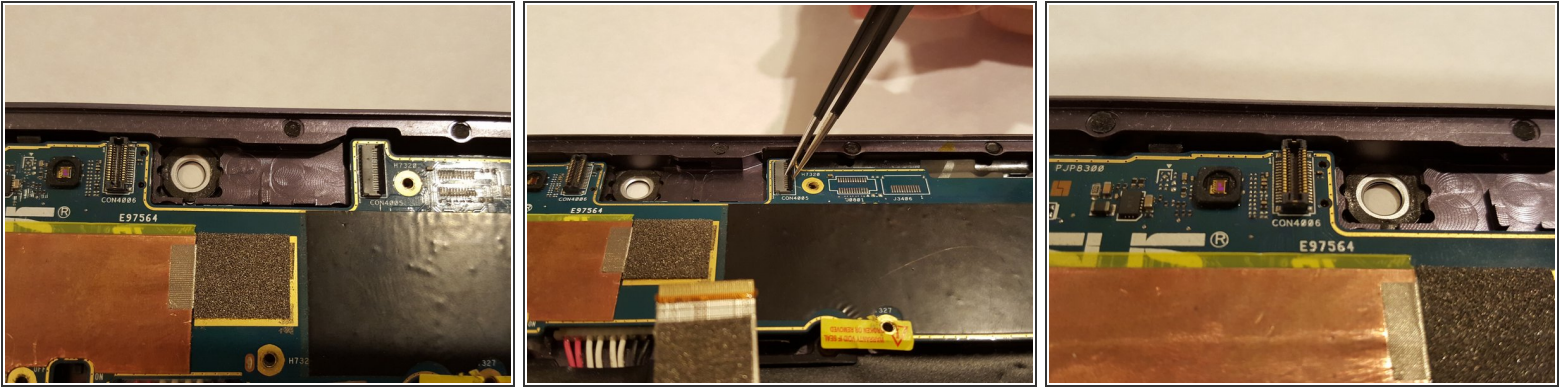
optional



PARTS:

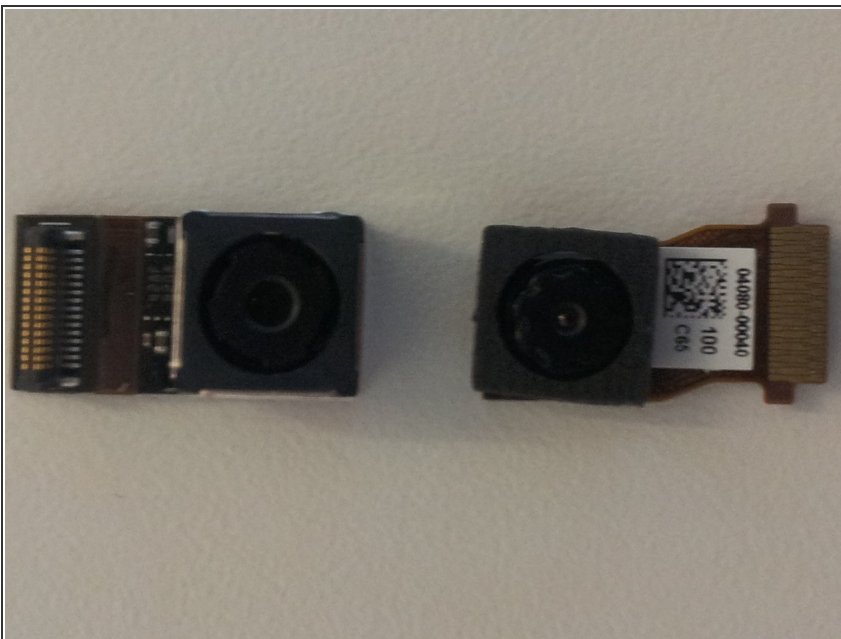
- [ASUS Transformer Pad Infinity Front Facing Camera](#) (1)
- [ASUS Transformer Pad Infinity Rear Facing Camera](#) (1)

Step 1 — Rear/Front Facing Camera



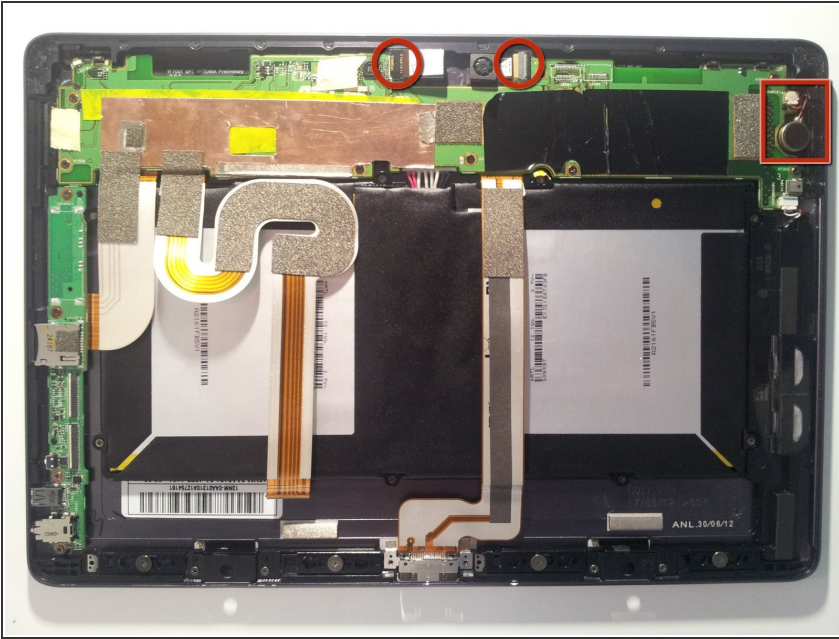
- Flip the pieces that secure the ribbons to the motherboard up. This is for the front facing camera.
- Take out the ribbon connected to the motherboard. This is for the rear camera.
- Note: Only follow what is needed for the camera you are replacing. If both cameras need replacement, do both steps. Otherwise, follow the one designated for the camera you need to replace.
- Note: The first photo shows the overall image. The second photo shows the step for the front facing camera. The third photo shows the step for the rear camera.

Step 2



- Take the cameras out.
- Note: They are stuck onto the case by little sticky pads.

Step 3



- Put the cameras back into their spot.
- Note: It's probably worth it here to make sure they are secure to the case so either re-use the old sticky pads or find some new ones.

To reassemble your device, follow these instructions in reverse order.