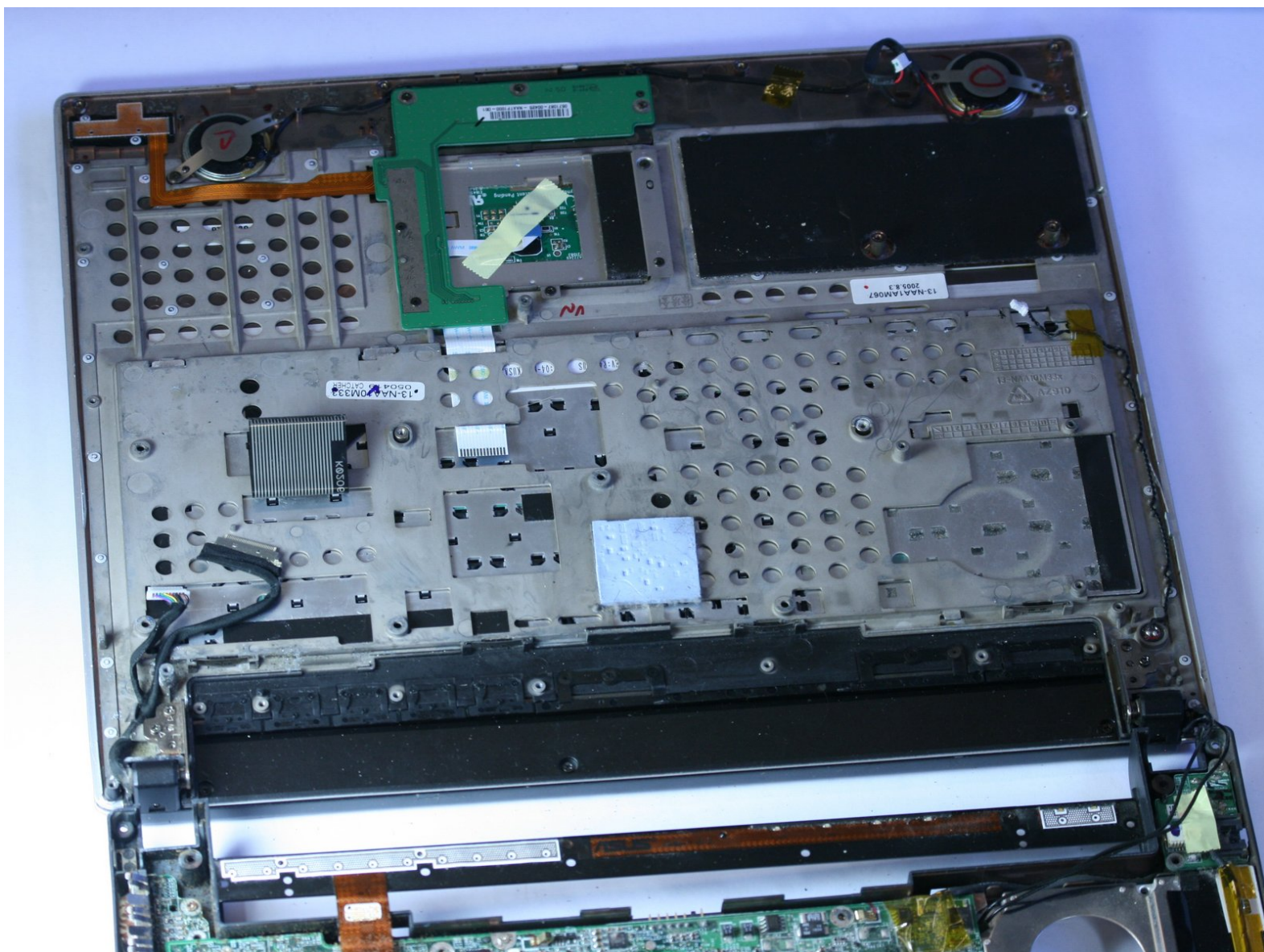




Asus V6800V Display Replacement

Replace the display of your Asus V6800V.

Written By: Brian Tubb



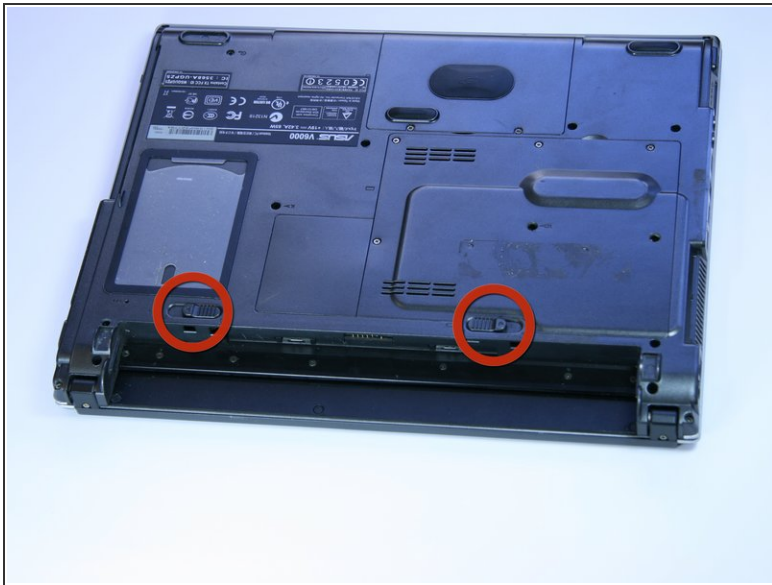
INTRODUCTION


Use this guide to replace the display of your Asus V6800V.

TOOLS:

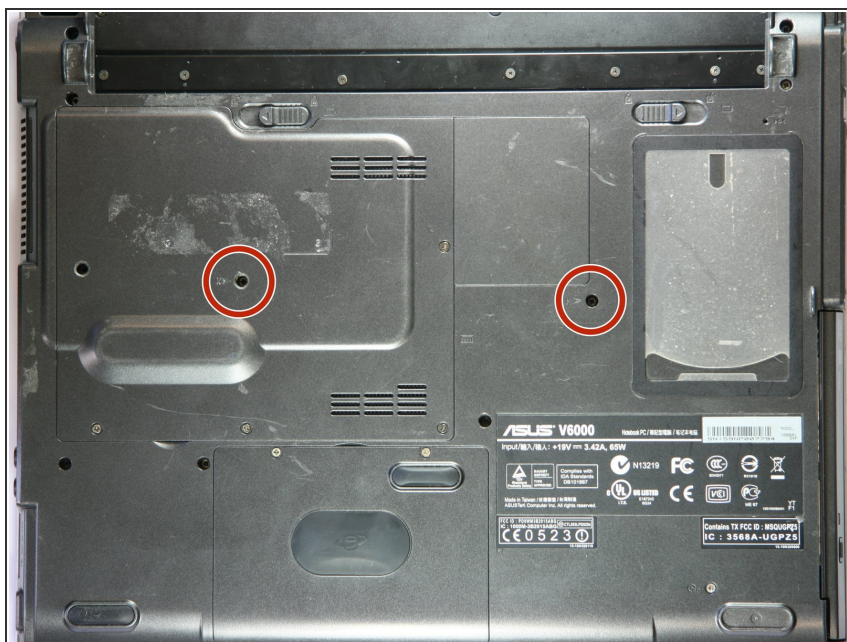
- [Phillips #0 Screwdriver](#) (1)
 - [iFixit Opening Tools](#) (1)
-

Step 1 — Battery



- Flip the computer over so that it is upside down.
 - Slide both latches away from each other (towards the outside).
 - Push the battery out with your fingers.
-  The actual battery is not shown in the photograph.

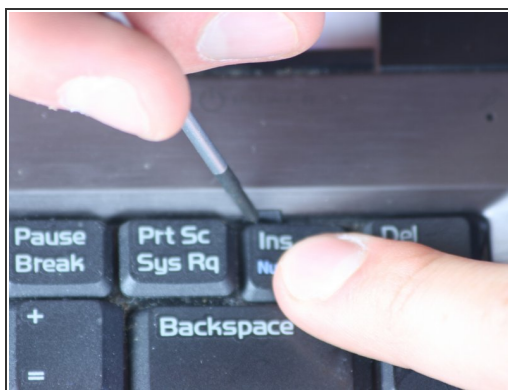
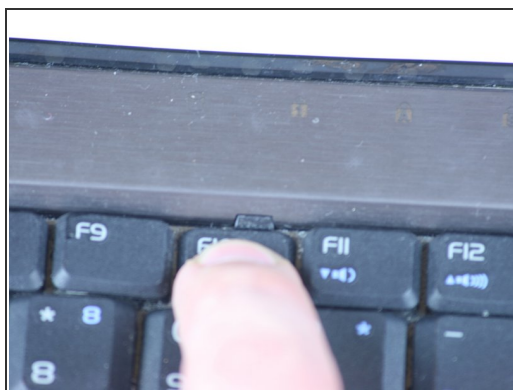
Step 2 — Keyboard



- Remove the two screws on the underside of the case.

ⓘ These screws should have a keyboard "K" symbol next to them.

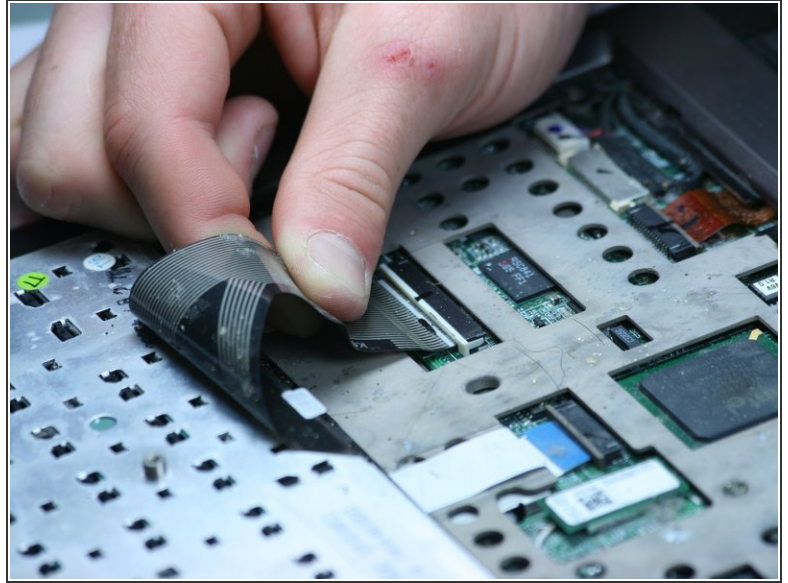
Step 3



- Locate the little tabs above the INSERT, F10 and F1 keys, and between the F5 and F6 keys.
- Starting with the tab above the F1 key, press the tabs inward using your fingernail or spudger. Continue this process for the rest of the tabs.

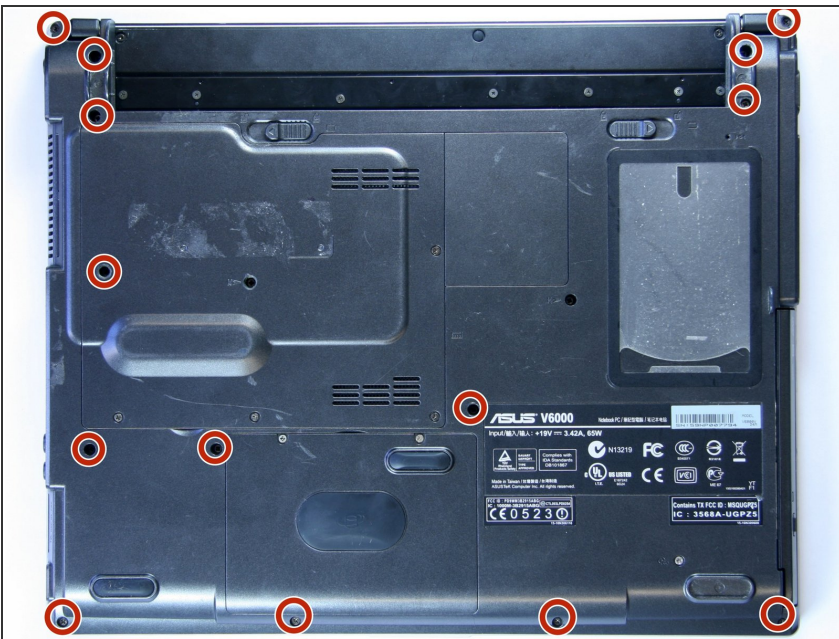
ⓘ Once all four tabs have been released, the top half of the keyboard should be free.

Step 4



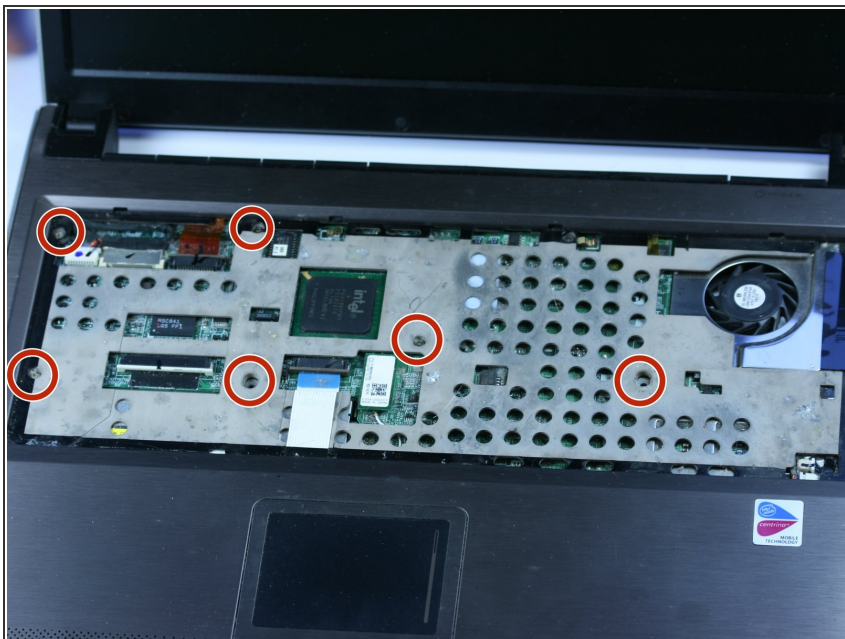
- Pull the keyboard out at a 45 degree angle and place it upside down on the scroll pad.
- Pull the wide ribbon cable laterally from its socket on the motherboard.

Step 5 — Asus V6800V Lower Case Disassembly



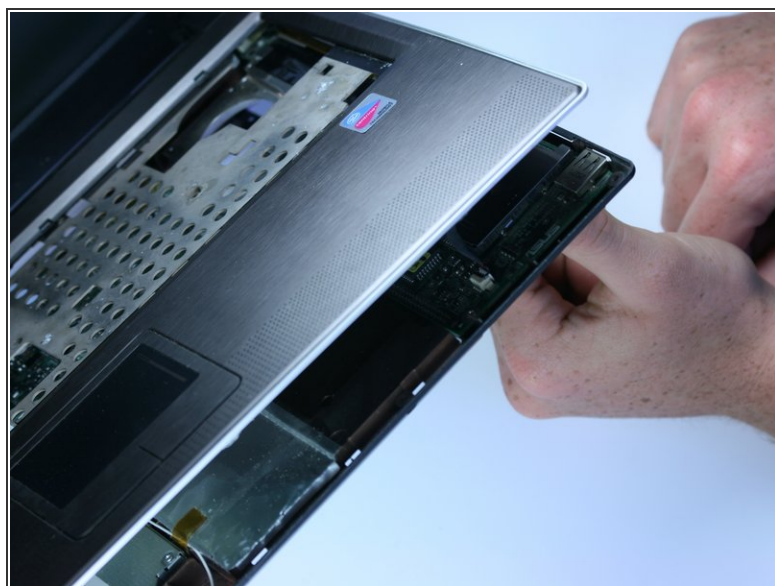
- Unscrew the screws at the bottom of the chassis to remove the top panel.
- ⓘ This will allow for the removal of the display from the rest of the computer.

Step 6



- Under the keyboard, remove the six screws that are highlighted.

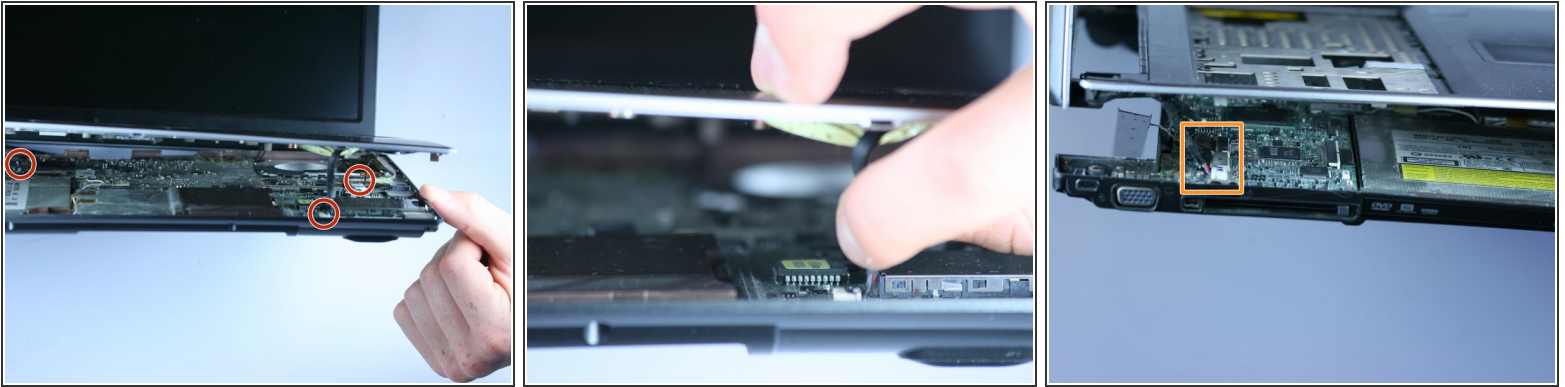
Step 7



- The case needs to be separated. Use your fingers or a pry tool to gently start at the front and work around the entire case.

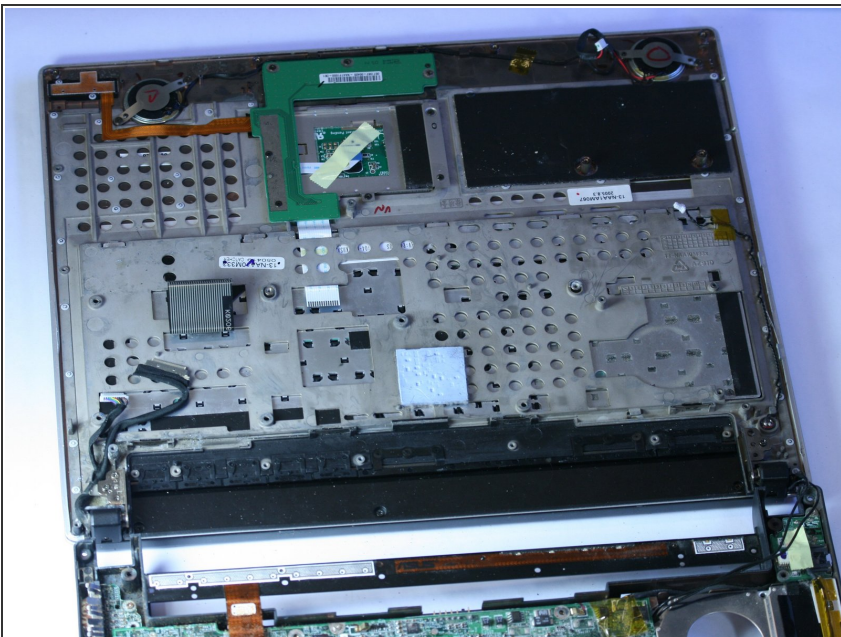
⚠ There are several cables connecting both sides of the case internally, so be gentle. The cables will be removed in the next step.

Step 8



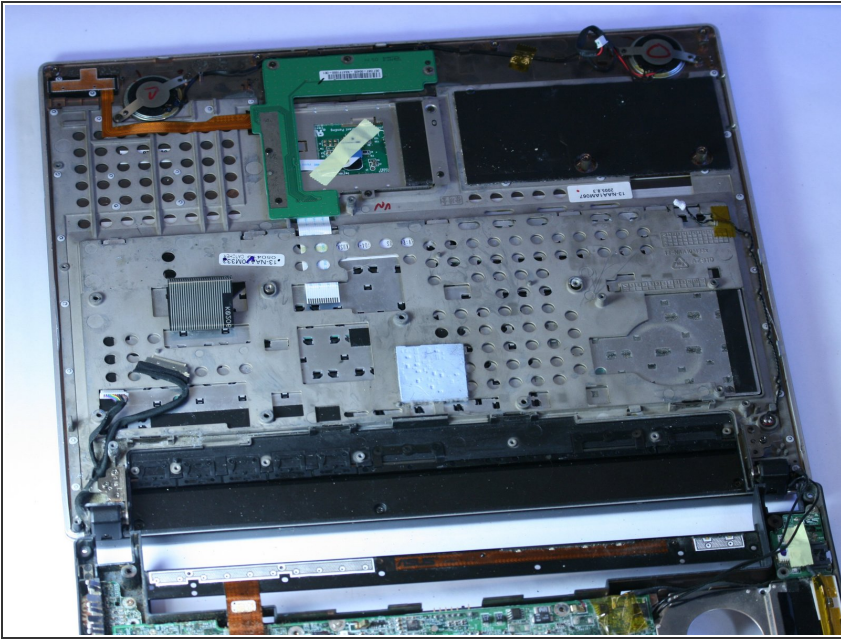
- Remove the internal cables by starting with those in the front and working towards the back.
- Use your fingers to gently remove the cables from their sockets.
- ⓘ The cables connecting the display to the main chassis are difficult to pull out using your fingers. A tool of some sort (tweezers in this case) may need to be used.
- ⓘ There is one cable that connects the display to the chassis. Don't pull on it. It has no impact on the display. It is highlighted in step 9.

Step 9



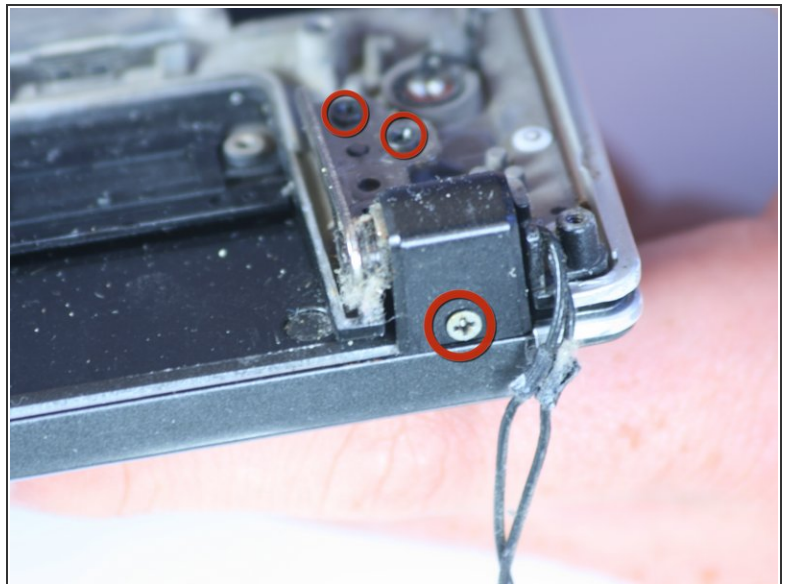
- Once you can separate the screen and top case from the bottom case, lay them flat so you can work on the computer more easily.

Step 10 — Display



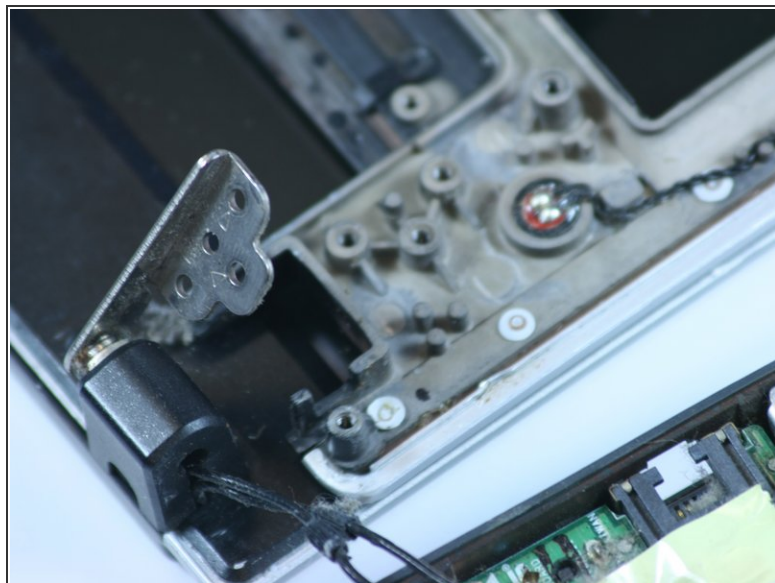
- Once the case is separated, it is relatively easy to replace the display. Just be very careful; new displays can cost several hundred dollars.
- First, we need to get the display by itself.

Step 11



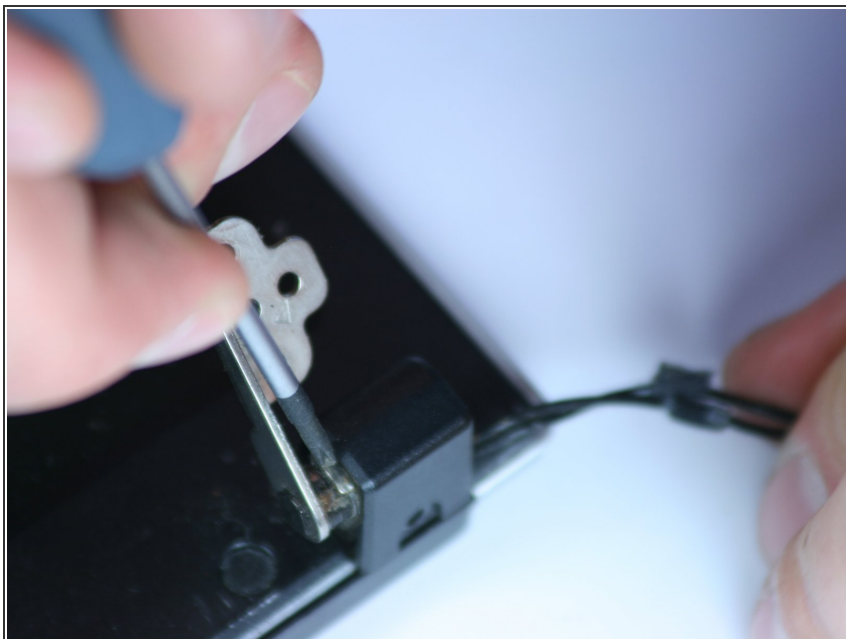
- Unscrew the 6 screws (3 each side) holding the top panel of the chassis to the display.

Step 12



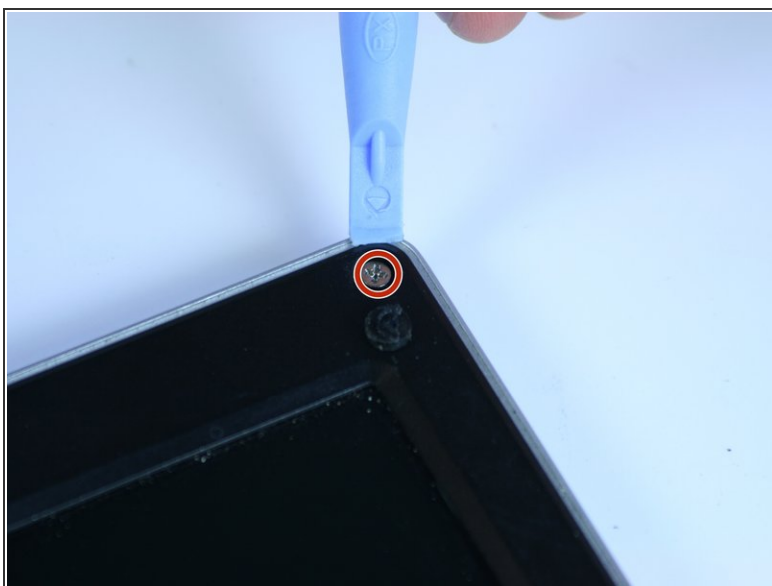
- Once the screws are removed, you can separate the display by itself.
- ⓘ The easiest way to accomplish this is by leaving the display flat on the table and tilting the panel up (as if opening a laptop). This will shift the hinges to allow easy removal.
- Separate the chassis from the display. If the screws were removed properly, nothing should hold them together.

Step 13




- The display is now separated from the case.
- We now need to pull off the panels around the display. Start by removing the small enclosures around the hinges.

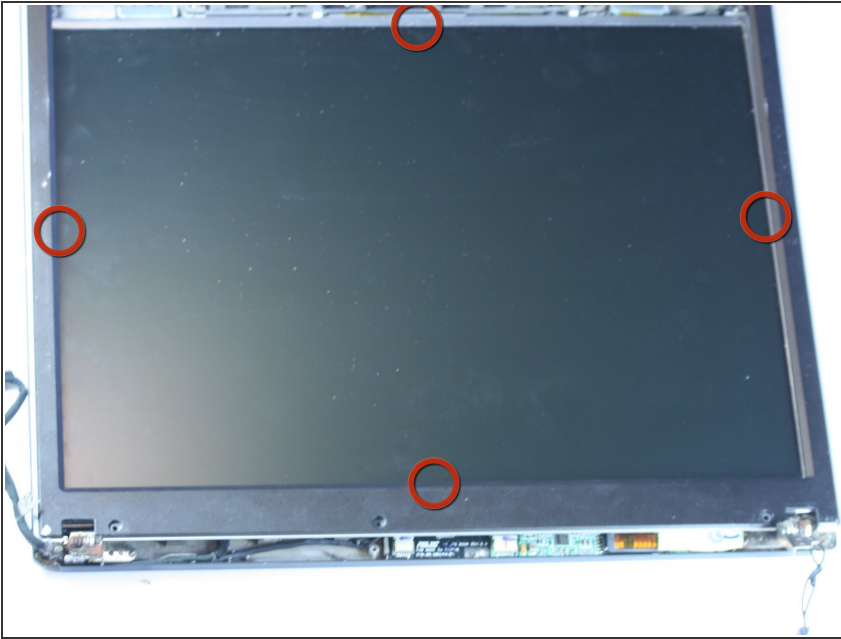
Step 14



- Remove seven Phillips screws from the bezel. They are all hidden under small circular rubber covers.

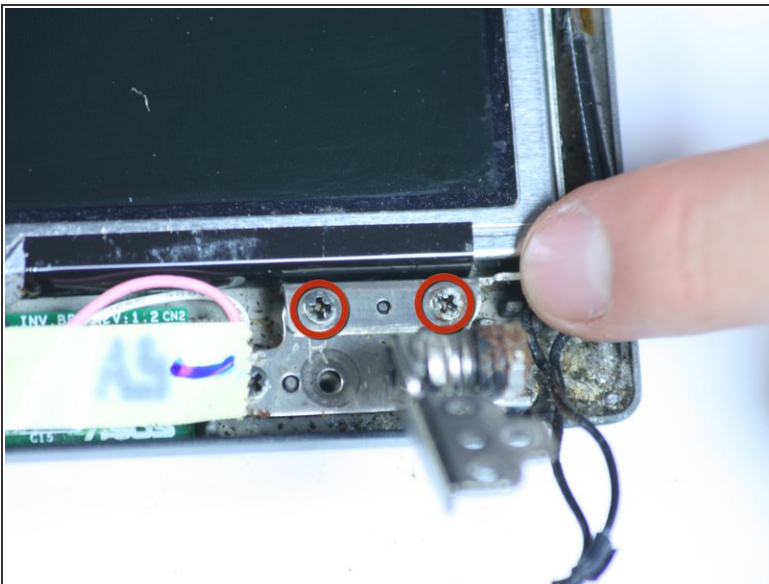
 The seven screws are hidden under small circular rubber covers.

Step 15



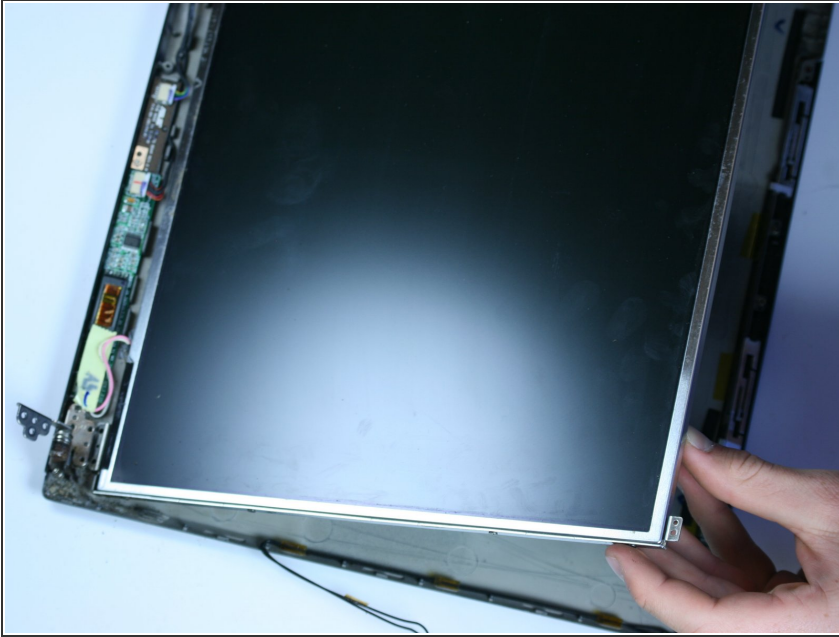
- Using a finger or plastic opening tool, gently pry the bezel up from the screen.

Step 16



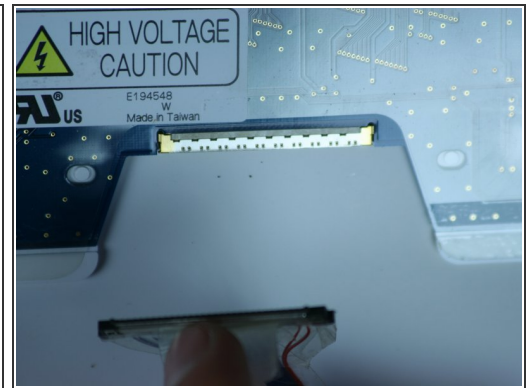
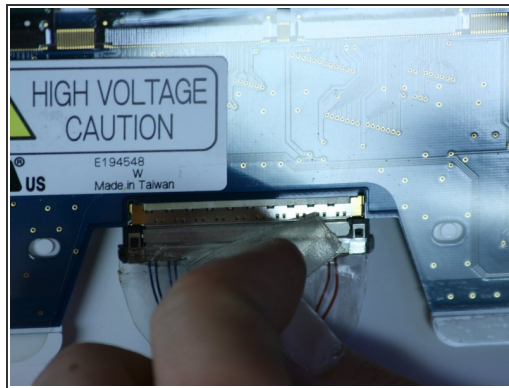
- Remove six screws from underneath the bezel: two next to each hinge and one at each top corner.
- ⓘ Beware of the magnets. These are used instead of latches so the computer stays closed during travel. If they attach to the display on removal, gently put them back in their original positions. (These are highlighted in orange)

Step 17



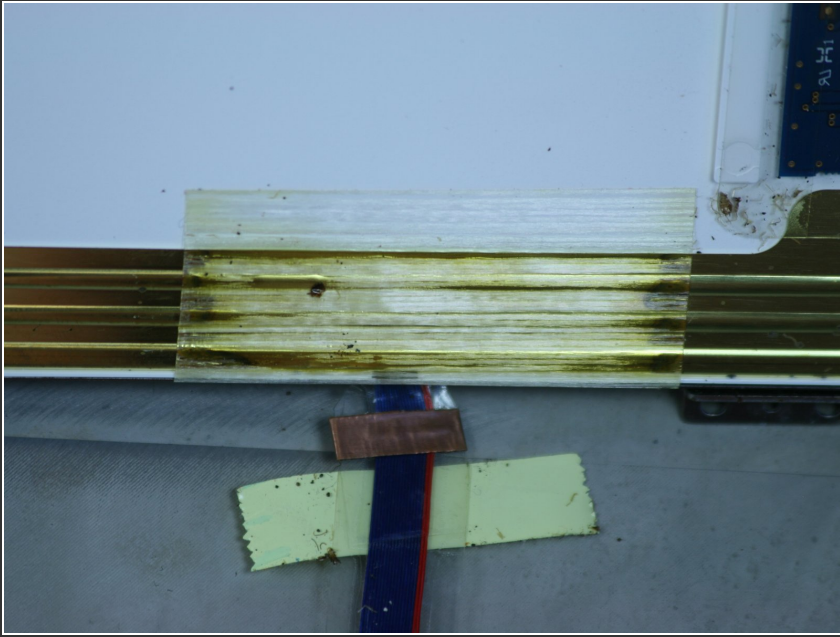
- Lift the panel away from the top of the casing. There is a connector holding the display down near the hinges, so be gentle at the bottom.

Step 18



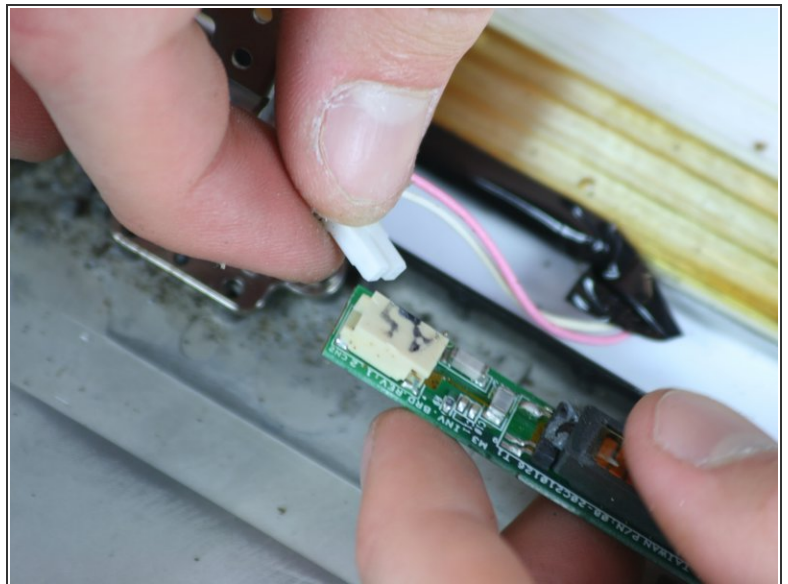
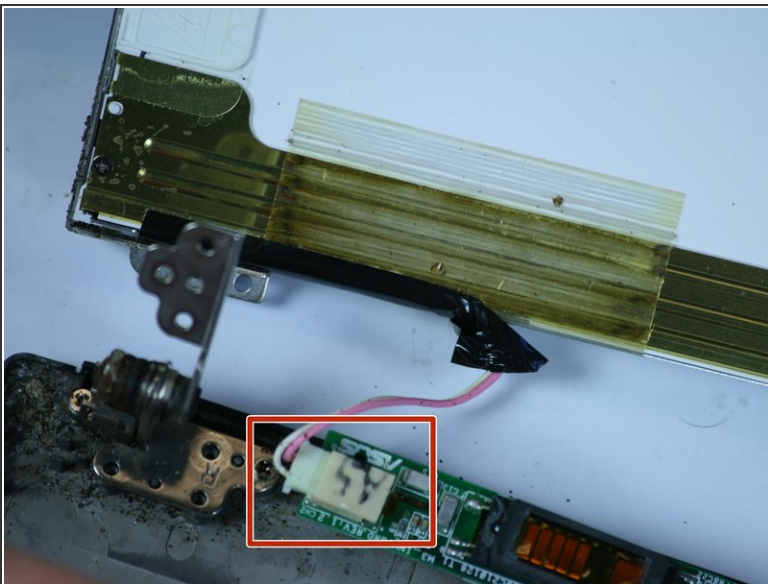
- The connector to the display on the back should be removed. Be gentle because these are not replaceable.
- There is tape holding the cable to the display. The best method of removing the cable is by gently pulling tape off of the part connected to the display and using that leverage to gently pull down.

Step 19



- Remove the tape holding the cable to the screen.

Step 20



- Remove the small connector located near the right hinge.

⚠ Be aware of the direction the cables are removed. They need to be replaced exactly the same later.

Step 21



- The display is totally separated now. You can either replace or repair it.

To reassemble your device, follow these instructions in reverse order. The display is very sensitive, so do not apply any pressure to the front or back of the display.