



Asus V6800V Wireless Card Replacement

How to get to, examine, and replace the wireless adapter card.

Written By: Steven

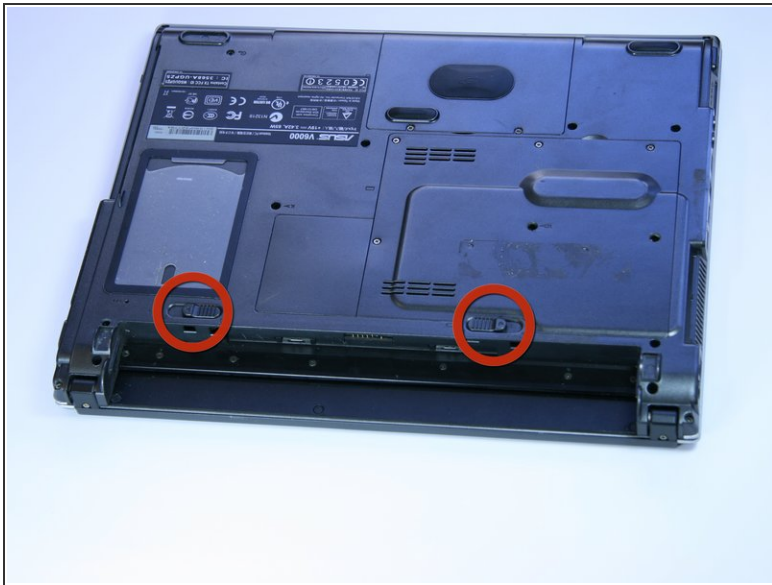





TOOLS:

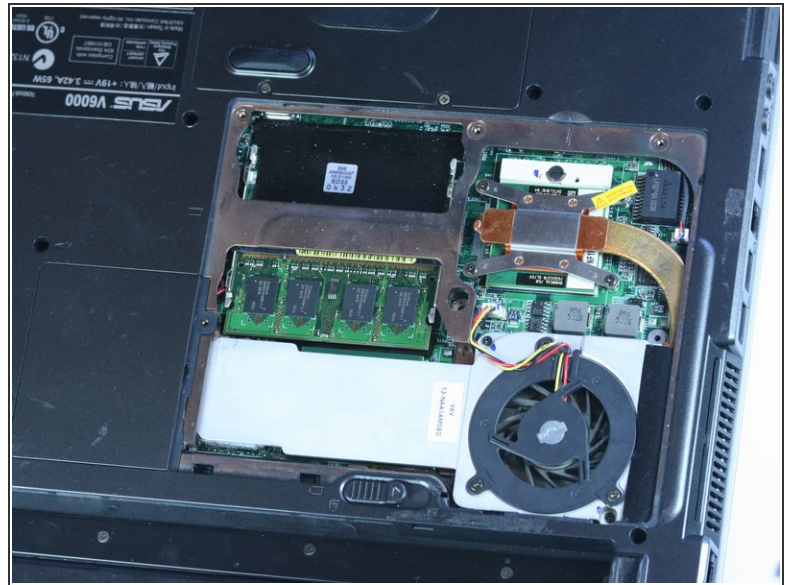
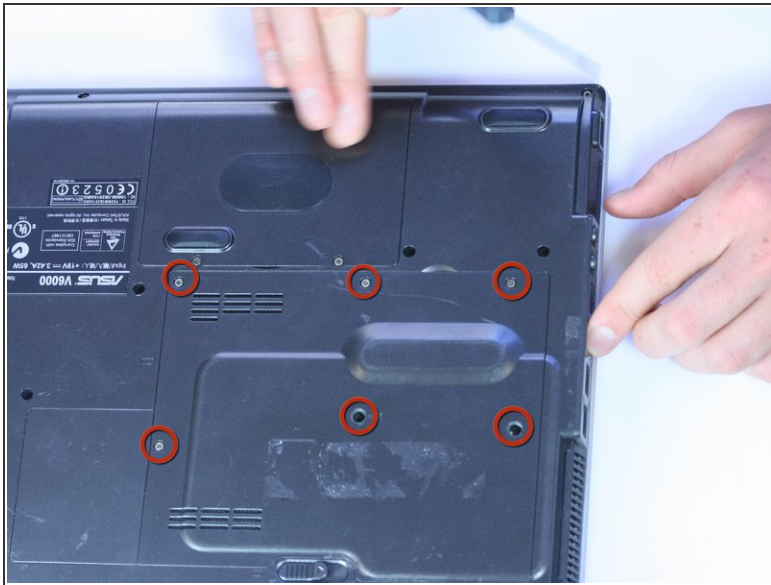
- [Phillips #0 Screwdriver](#) (1)
 - [iFixit Opening Tools](#) (1)
-

Step 1 — Battery



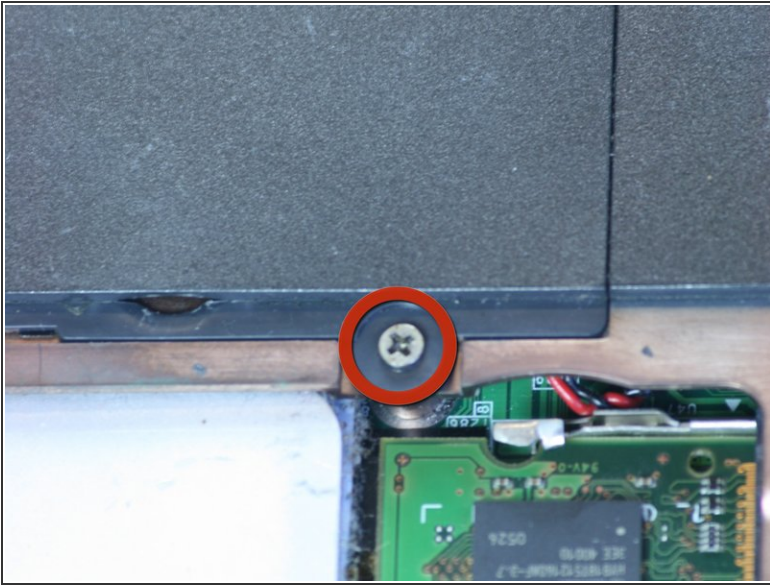
- Flip the computer over so that it is upside down.
 - Slide both latches away from each other (towards the outside).
 - Push the battery out with your fingers.
-  The actual battery is not shown in the photograph.

Step 2 — Wireless Card



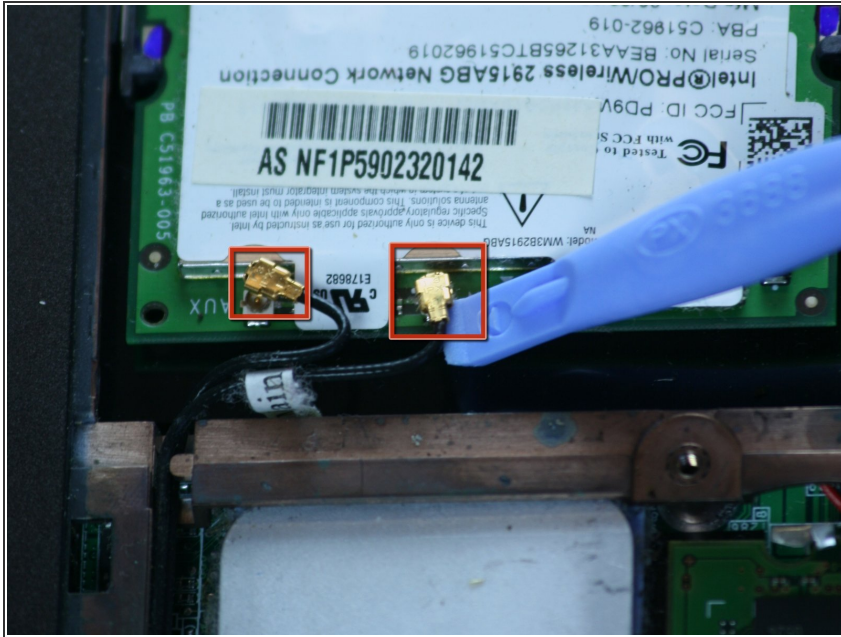
- Remove the six screws highlighted on the picture.
- Once the screws are removed, pry open the panel with the pry tool.
- It should now look like this.

Step 3



- After removing that panel, locate the screw on the right as highlighted.
- Remove that screw.
- Pry open the side panel with the small prying tool as shown.
- That panel should pop off and the wireless card will now be easily visible.

Step 4



- Place the small prying tool underneath the gold connector, apply pressure straight up, gently until it pops off.
- Repeat for the other one.
- Push them aside.

Step 5



- Locate tabs that are holding the wireless card in place. Highlighted in picture.
- Place one finger on each tab and press each to the side away from the wireless card as shown.
- The wireless card should pop up as shown. Pull up more with fingers to get more clearance.

Step 6



- To remove the wireless card, pull the card directly out.
- It should come out with just a little bit of pressure.
- Should look as shown when removed.

To reassemble your device, follow these instructions in reverse order.