



Asus VivoBook E203MA-TBCL432B Display Assembly Replacement

How to replace the display assembly and top panel of the Asus VivoBook E203MA-TBCL432B.

Written By: Jacob Aubertine



INTRODUCTION

The LCD on the Asus VivoBook E203MA-TBCL432B comes inside the entire top half of the laptop. If you have followed a troubleshooting guide and determined that the LCD on your Asus VivoBook needs to be replaced, this guide will help you remove and replace the display assembly.



TOOLS:

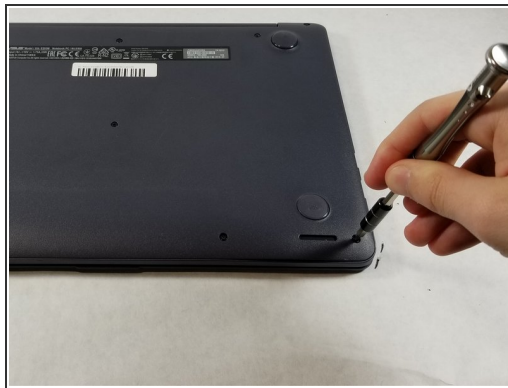
- [Phillips #0 Screwdriver](#) (1)
 - [iFixit Opening Tools](#) (1)
-

Step 1 — Back Panel



- Position the laptop so that the bottom panel is facing upwards, the hinge is away from you, and the ASUS logo is against the table.
- ⓘ It will be easier to replace the battery if the laptop is closed.


Step 2



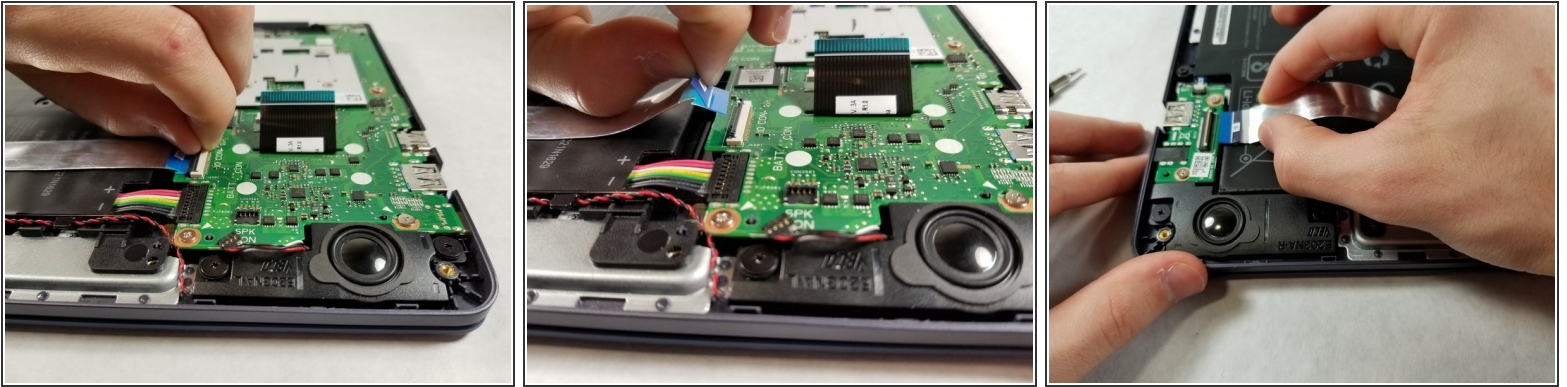
- Use a Phillips #0 screwdriver to remove the eight 5 mm screws on the back panel.
- Remove the two 7 mm Phillips #0 screws.
- ⓘ The 8 screws marked in red are all of the same length, 5 mm, and should not be interchanged with the two longer 7 mm screws marked in orange.

Step 3



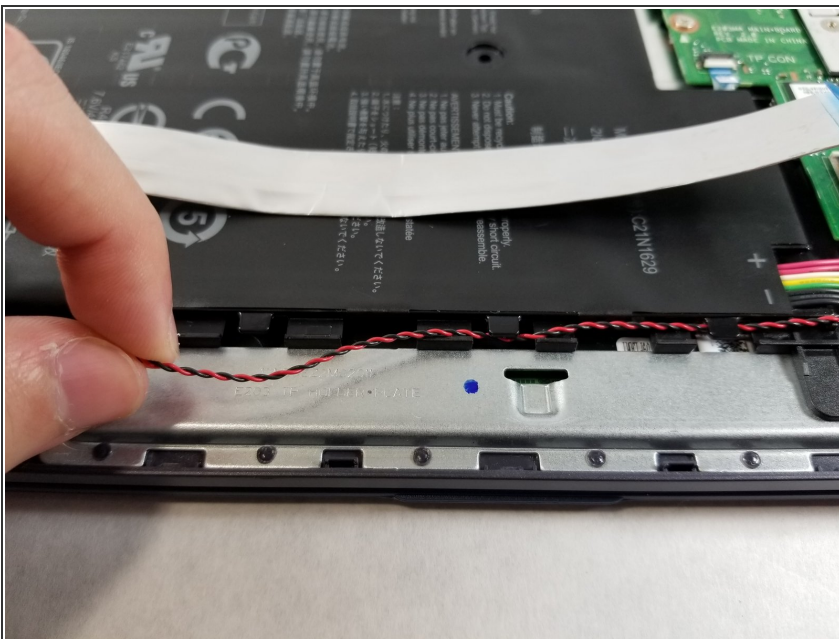
- Insert the iFixit opening tool in between the back panel and the rest of the laptop.
 - With the iFixit opening tool, lift the panel from the laptop body. Work your way around the device creating separation with the tool.
 - Once there is enough separation between the back panel and the device, gently pull off the back panel with your hands and completely remove it.
-  Make sure to use a plastic tool, not a metal one, so that you don't scratch the panel.

Step 4 — Battery



- Now that the back panel is removed you can clearly see the battery and all of its connectors.
- Begin by removing the silver ribbon cable along the back of the battery.
- To disconnect it from the motherboard, lift the black tab on the Zero Insertion Force (ZIF) connector up and pull the cable away using the blue tab.
- Disconnect the ribbon cable from the left side in the same way.

Step 5



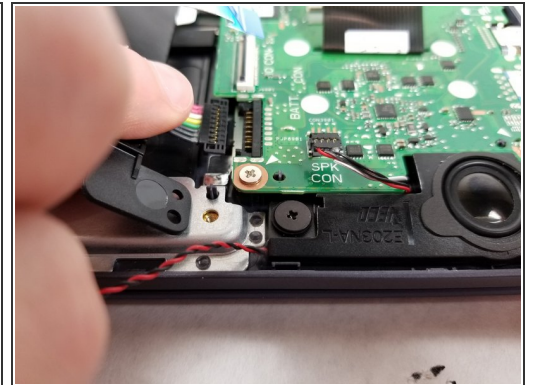
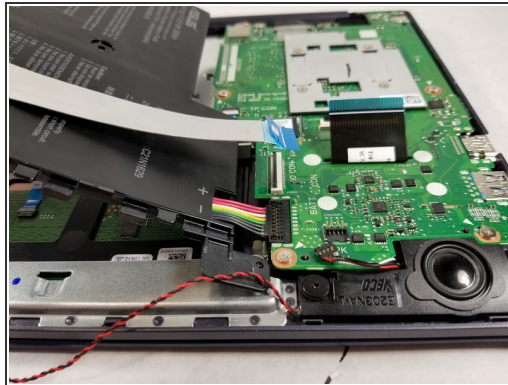
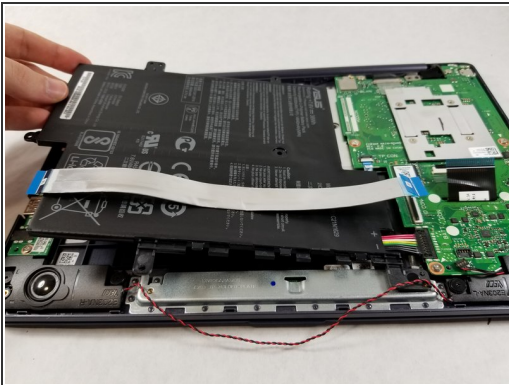
- Remove the red and black wire along the bottom of the battery.
- This does not need to be disconnected, only removed from the clamps along the bottom of the battery.

Step 6



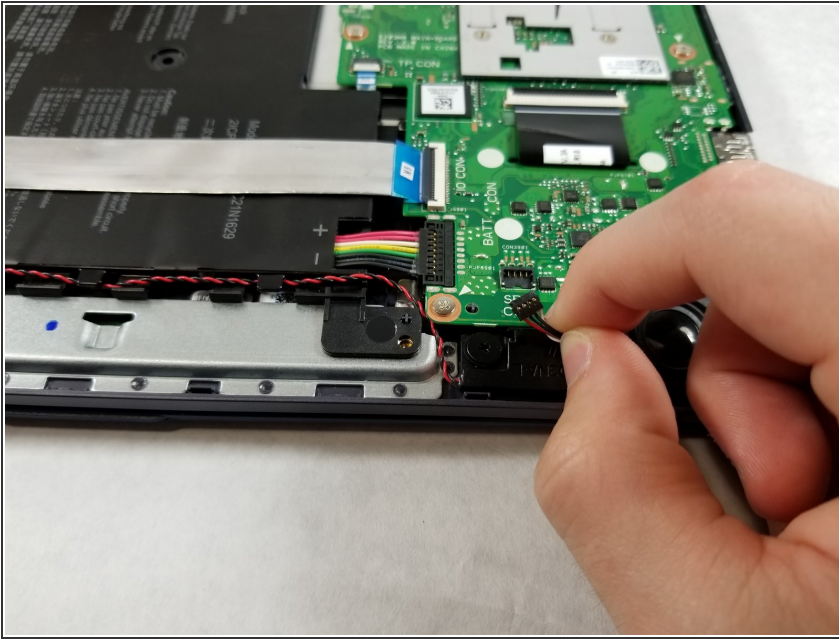
- Using the Phillips #0 screwdriver, remove the two 3 mm screws located at the top and left side of the battery.

Step 7



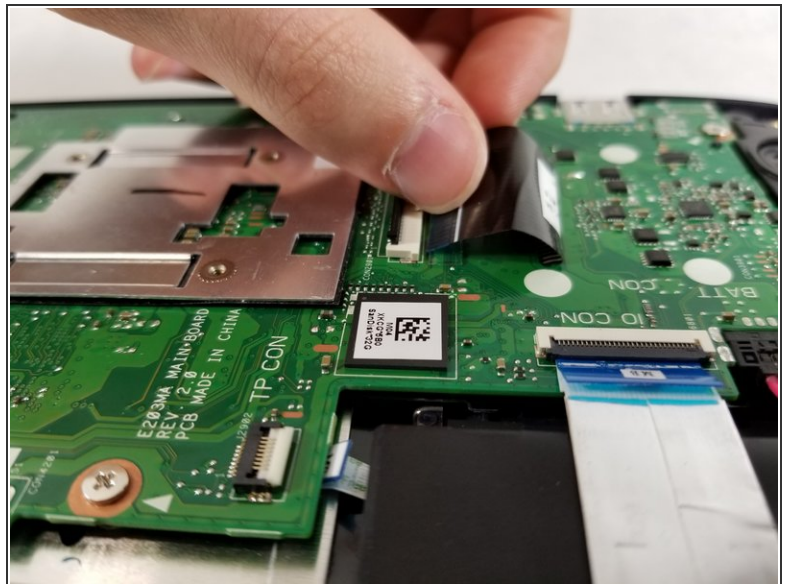
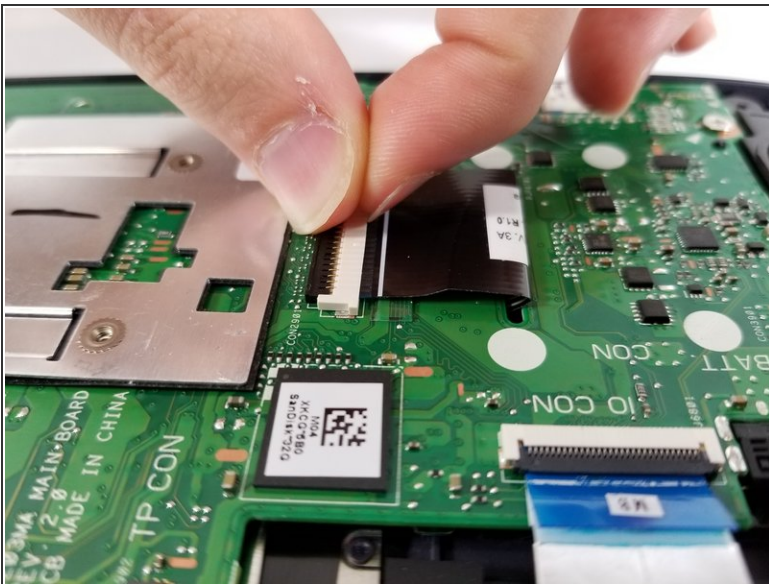
- Gently lift the battery being mindful of the one cable still connected to the motherboard.
- With the battery lifted, pull the remaining connector going to the motherboard up, it should come out with little force.

Step 8 — Motherboard



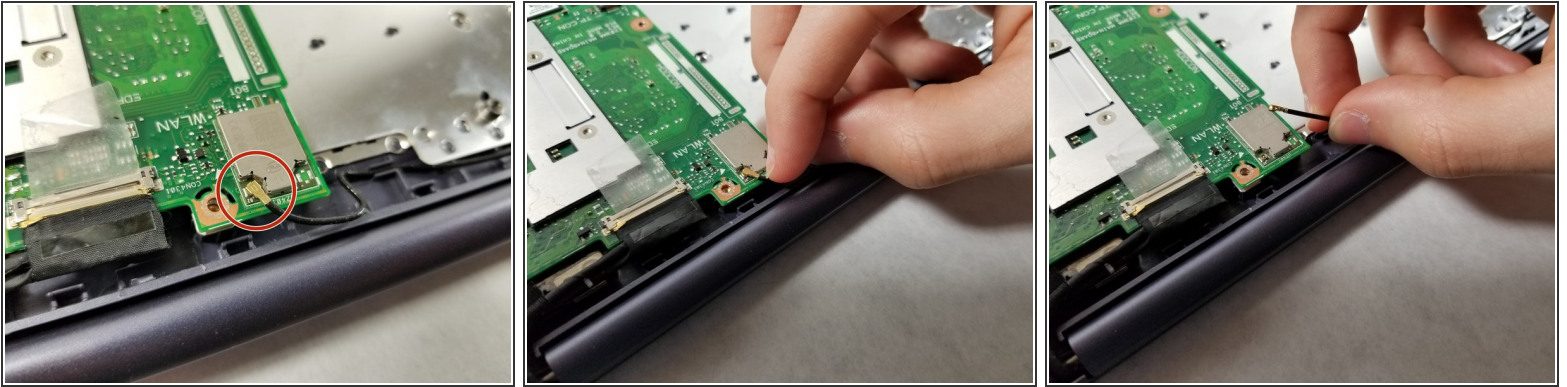
- Disconnect the small black and red bundled cable by lifting it directly up from the connector on the motherboard.

Step 9



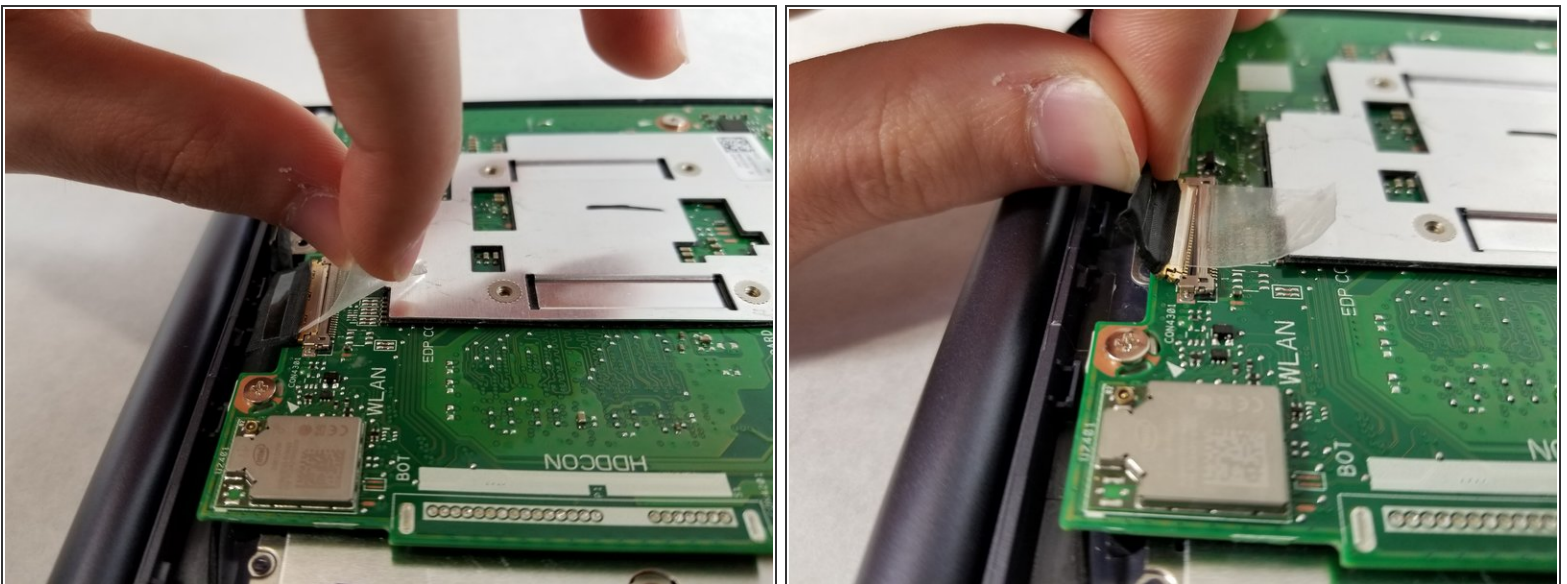
- Disconnect the black ribbon cable in the center of the motherboard by first lifting the black tab and then pulling the cable free.

Step 10



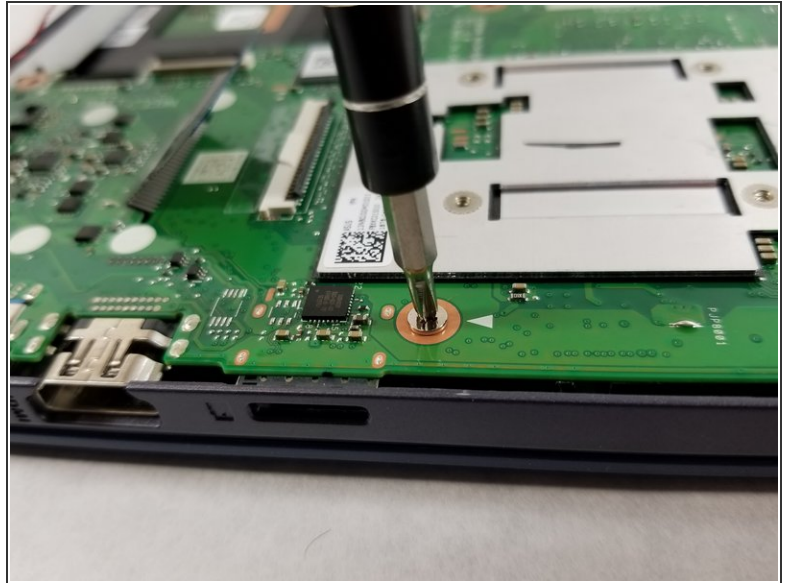
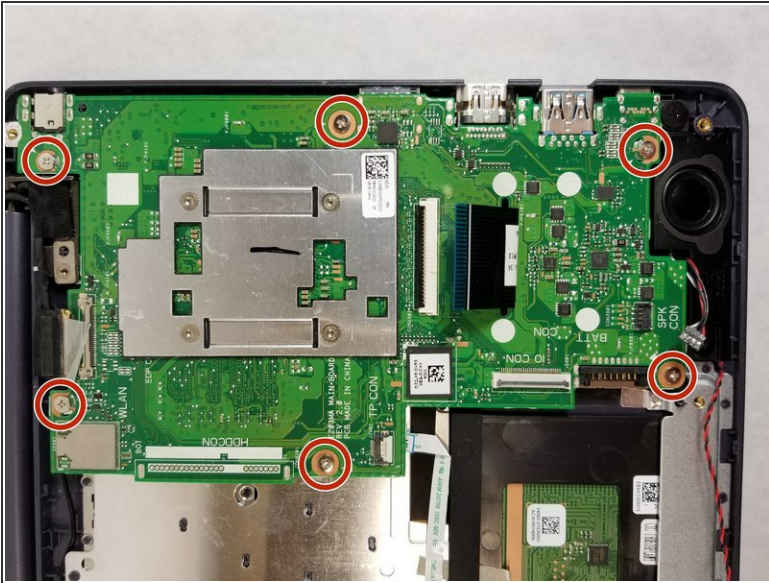
- Remove the coaxial connector from the motherboard.
- Grasp the wire close to where it connects to the motherboard.
- Pull up and away from the motherboard until the connector is no longer attached to the motherboard.

Step 11



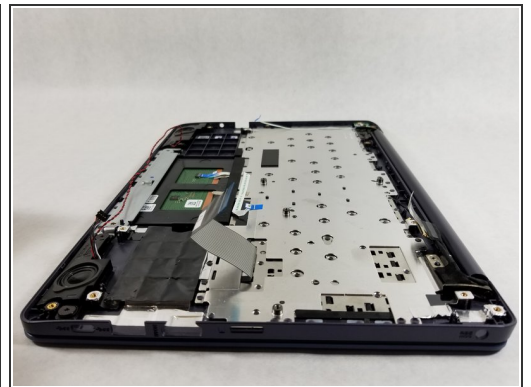
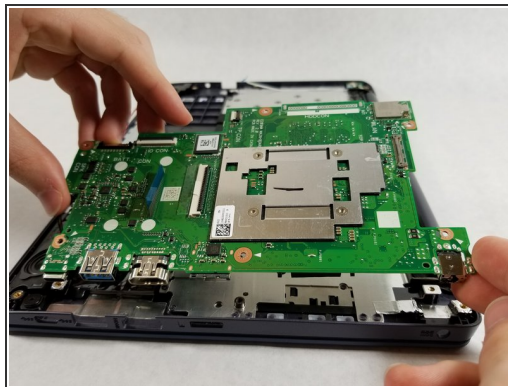
- At the top of the motherboard there is a connector that is taped in place.
- Peel back the tape so that it is no longer in contact with the motherboard.
- Gently pull the connector out from its socket.

Step 12



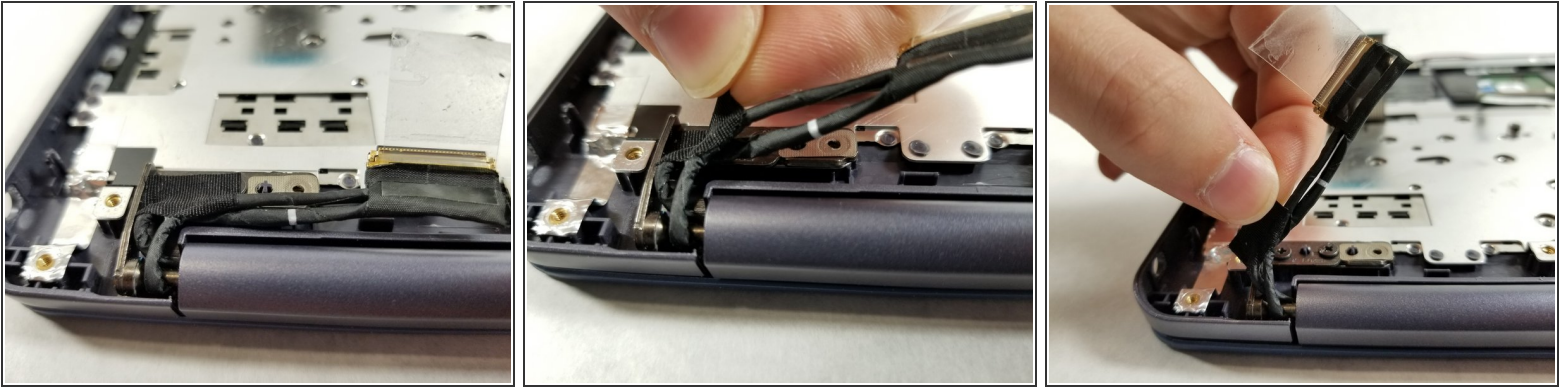
- Now that all the cables are disconnected from the motherboard, you can begin to remove the screws holding the motherboard in place.
- Use a Philips #0 screwdriver to remove the six 2 mm screws.

Step 13



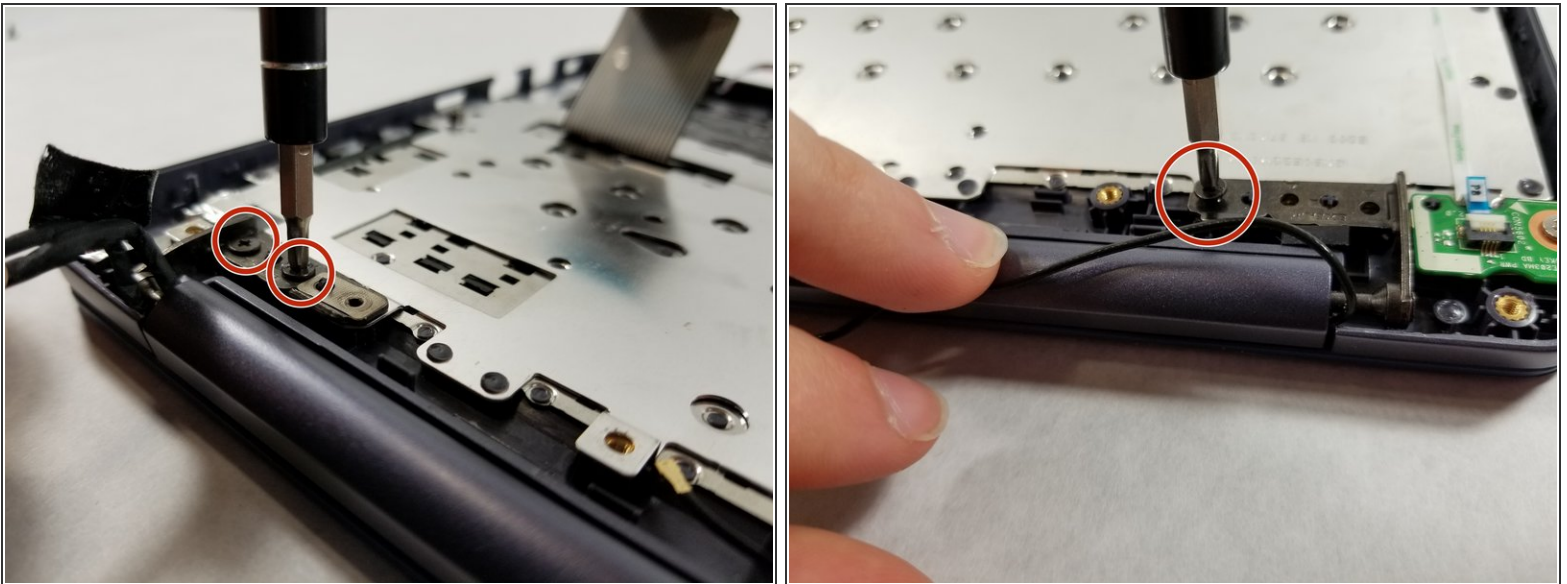
- Lift the motherboard away from the computer while allowing the ribbon cable in the middle to fall through its cutout.

Step 14 — Display Assembly



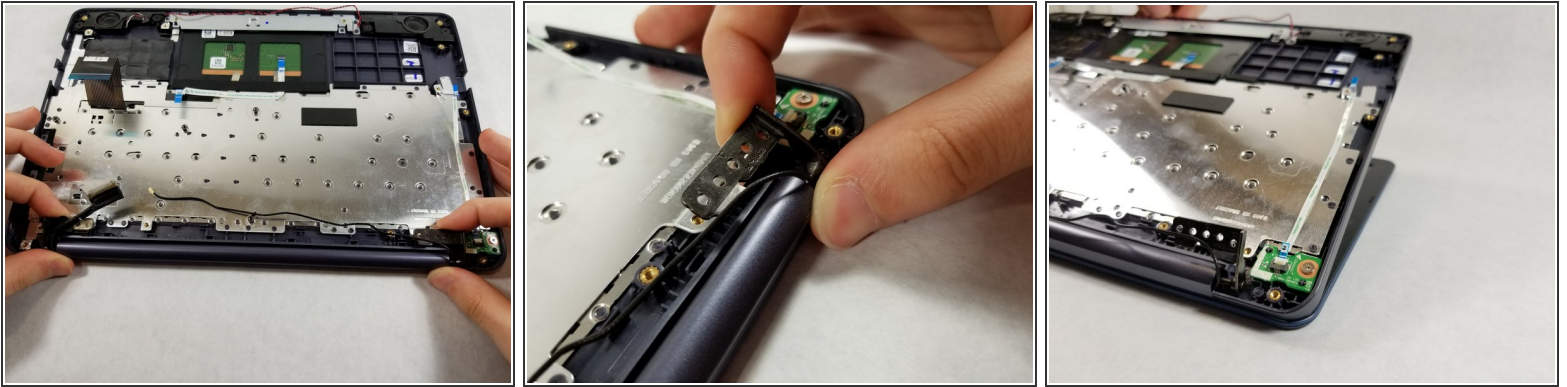
- Position the device so that the hinge is closest to you.
- Identify the connector with two thick wires that previously attached the LCD to the motherboard.
- Gently remove the tape on the wires that binds the connector to the metal hinge.

Step 15



- There are two hinges at the bottom of the laptop: one on the left side, and one on the right side.
- Using a Phillips #0 screwdriver, remove the three 3 mm screws that are through the hinges.

Step 16




- Lift each of the hinge tabs up from the device approximately 90 degrees.

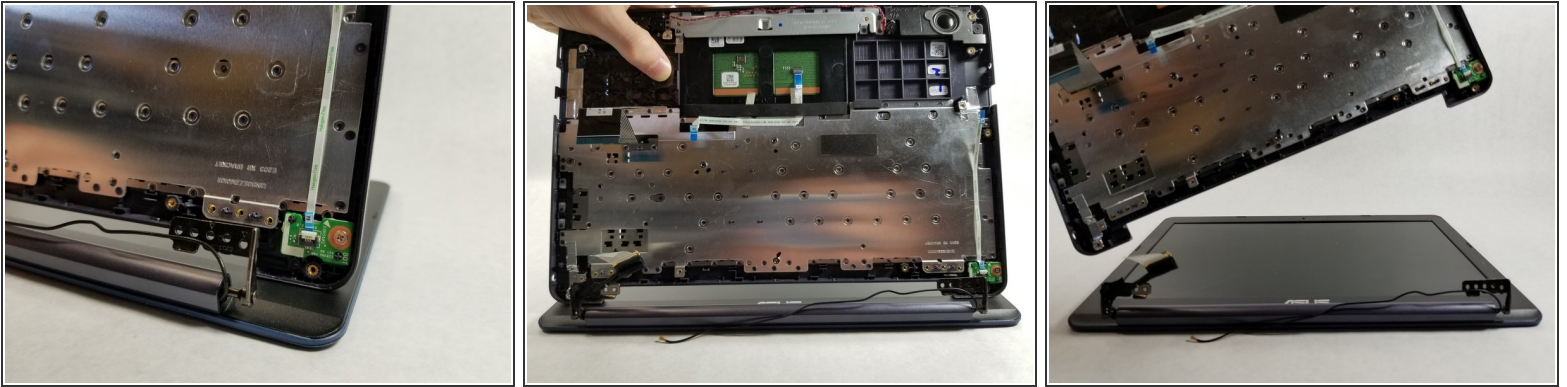
Step 17



- With the hinge facing towards you, open your device approximately 90 degrees.

 This should make it easier to separate the two components.

Step 18



- Push the bottom portion of your device away from you to separate it from the LCD
- The two components should separate with a little force.

To reassemble your device, follow these instructions in reverse order. Be mindful of the wire that connects the screen to the motherboard. If it is not properly tucked into the body of the laptop, the hinge may not close properly.