



Asus VivoBook Q200E-BSI3T08 Wireless Card Replacement

This guide will show you how to locate and remove the wireless card inside the back casing if you are experiencing wireless connectivity issues .

Written By: Mitchell Jackson



This document was generated on 2019-09-25 02:19:51 PM (MST).

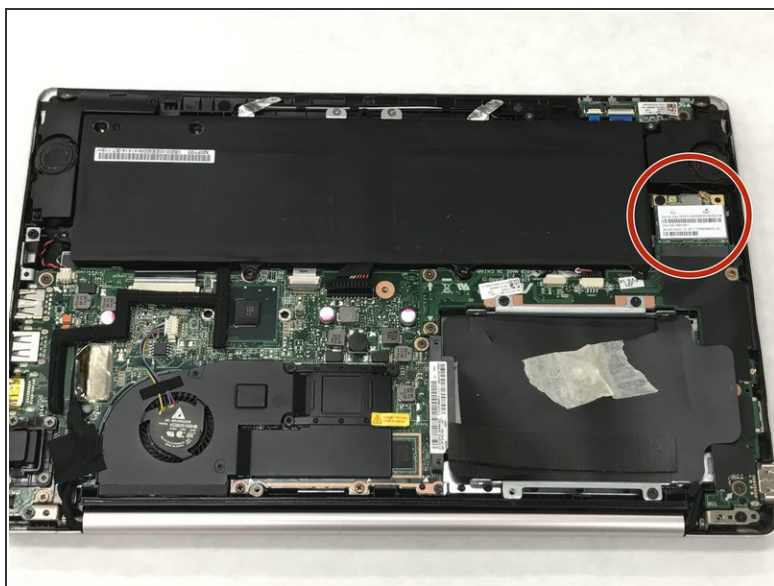
INTRODUCTION

This guide will show you how to locate and remove the wireless card inside the back casing if you are experiencing wireless connectivity issues .

TOOLS:

- [Phillips #0 Screwdriver](#) (1)
-

Step 1 — Wireless Card



- Locate wireless card next to battery.

Step 2



- Remove the one 4.9mm screw that holds the wireless card in place with a Phillips #00 screwdriver.

Step 3



- Unplug the black coaxial cable from the wireless card.

Step 4



- Pull the wireless card from connector slot.

To reassemble your device, follow these instructions in reverse order.