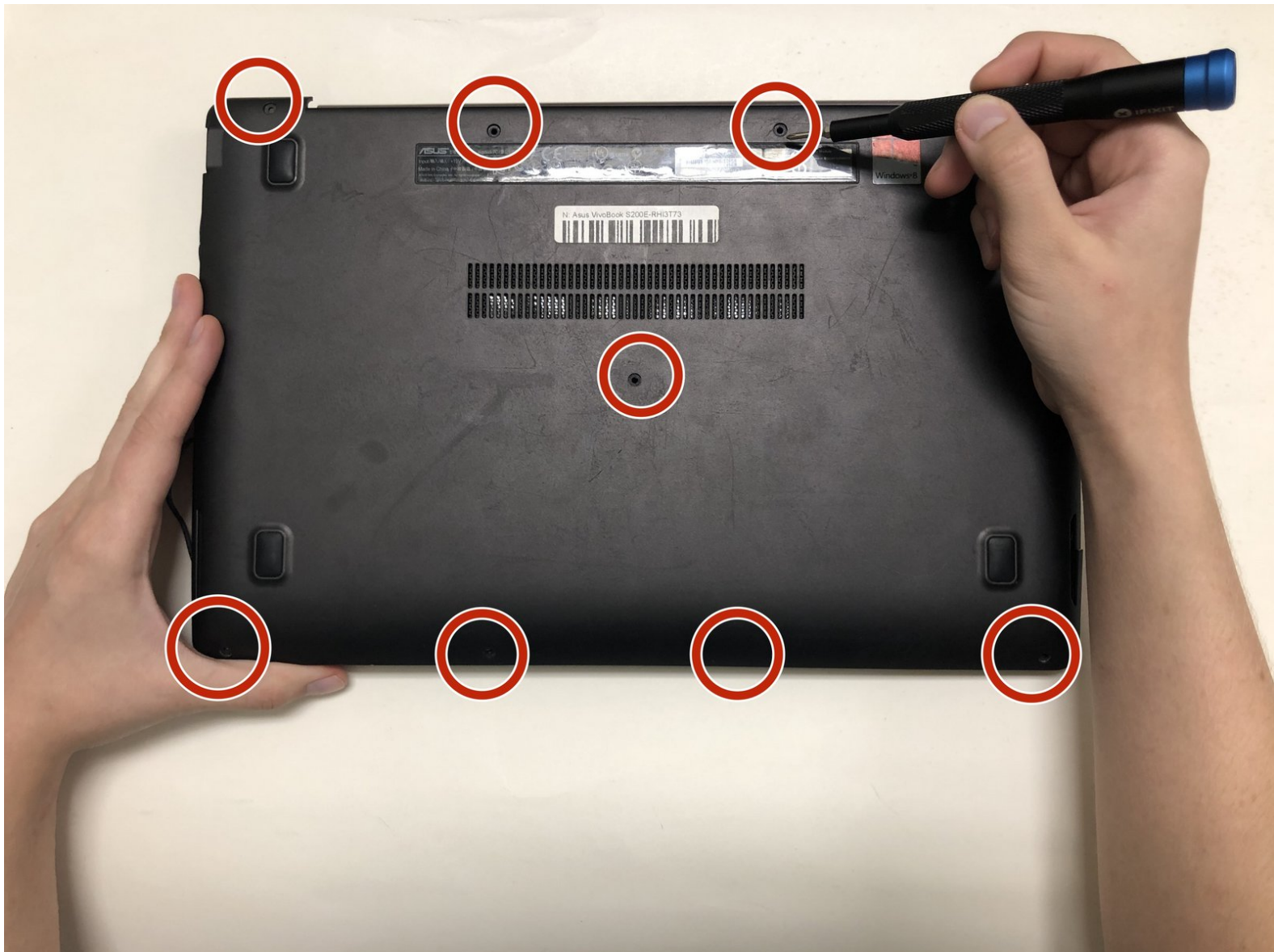




Asus VivoBook S200E-RH13T73 Keyboard Replacement

This guide will show you how to replace the keyboard in the ASUS VivoBook S200E-RH13t73.

Written By: Alyssa McFall



INTRODUCTION

As the primary component used to enter text on any computing device, the keyboard is one of the most important parts of your ASUS VivoBook S200e-RH13T73. If you notice any physical damage, excessive dust and debris, or unresponsiveness from your device's keyboard, it might be time to replace it.

Before using this guide, I suggest you inspect the keyboard of your ASUS VivoBook S200e-RH13T73 to acknowledge any easy-to-remove debris. If it seems like build up could be the problem, try blowing the keyboard out with compressed air. If that is not the solution, follow this guide to replace your ASUS VivoBook keyboard.

Be sure to unplug and power off your device completely before going on to complete this guide.

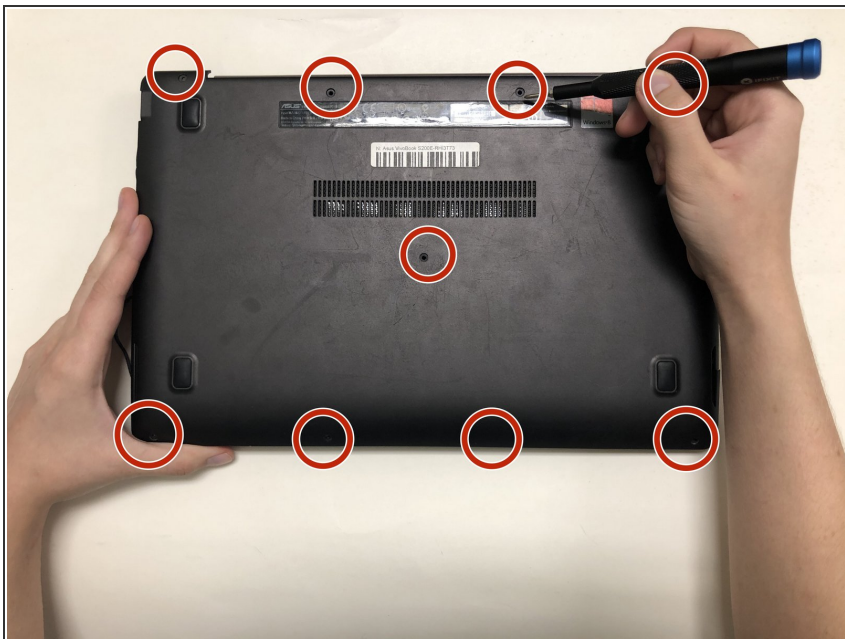
The metal panel as well as the actual keyboard, in steps 5 and 6 are extremely easy to bend! Be sure to use caution and gentle hands when removing these pieces as physical damage (like bending) can decrease the chances of your device returning to its original, functioning state.



TOOLS:

- [Phillips #0 Screwdriver](#) (1)
- [Tweezers](#) (1)
- [Spudger](#) (1)

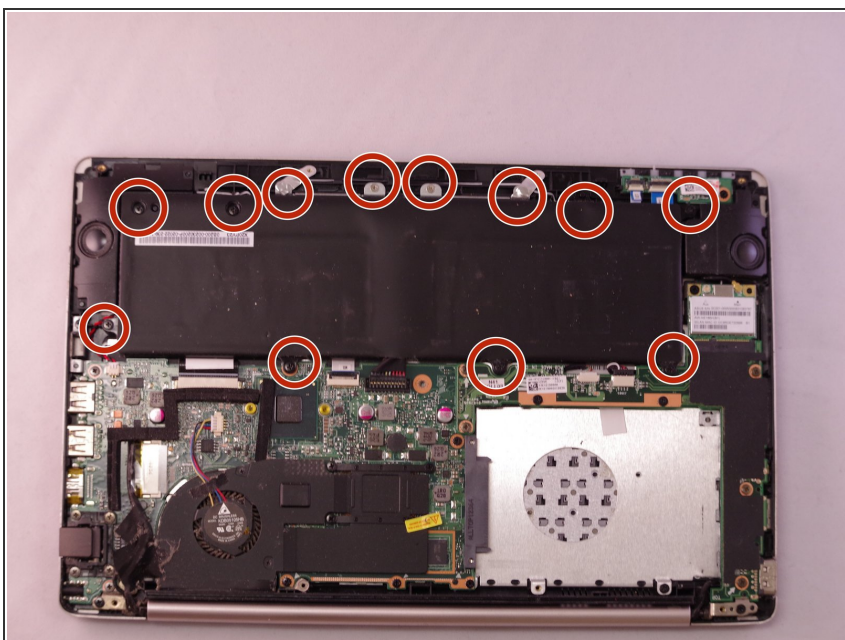
Step 1 — Keyboard



- Use a Phillips #0 screwdriver to remove the nine 50mm screws and lift the panel.

⚠ Be aware of sharp metal edges once the panel is removed.

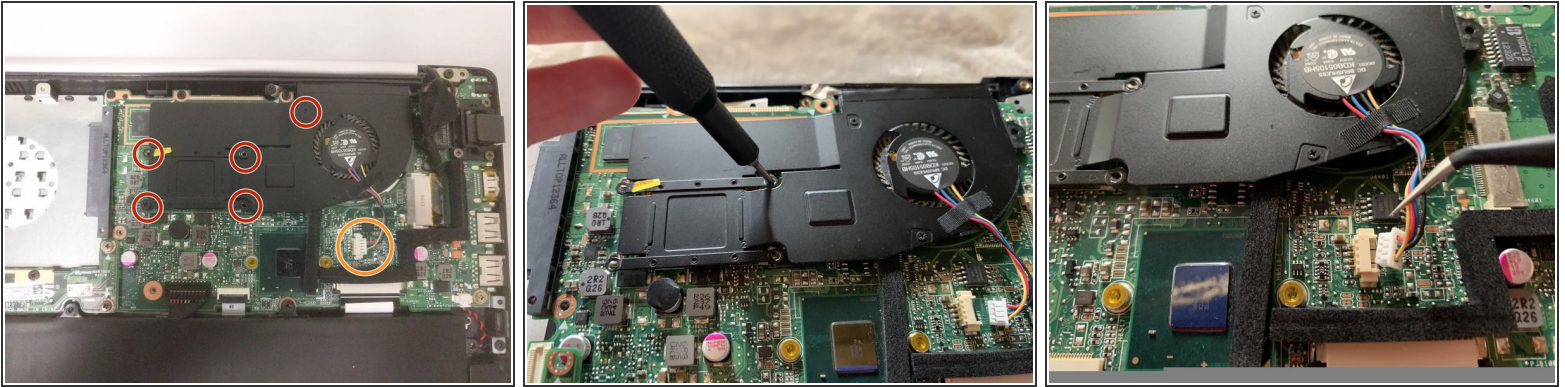
Step 2



- Use the Phillips #0 screwdriver to remove the twelve 50mm screws around the battery.

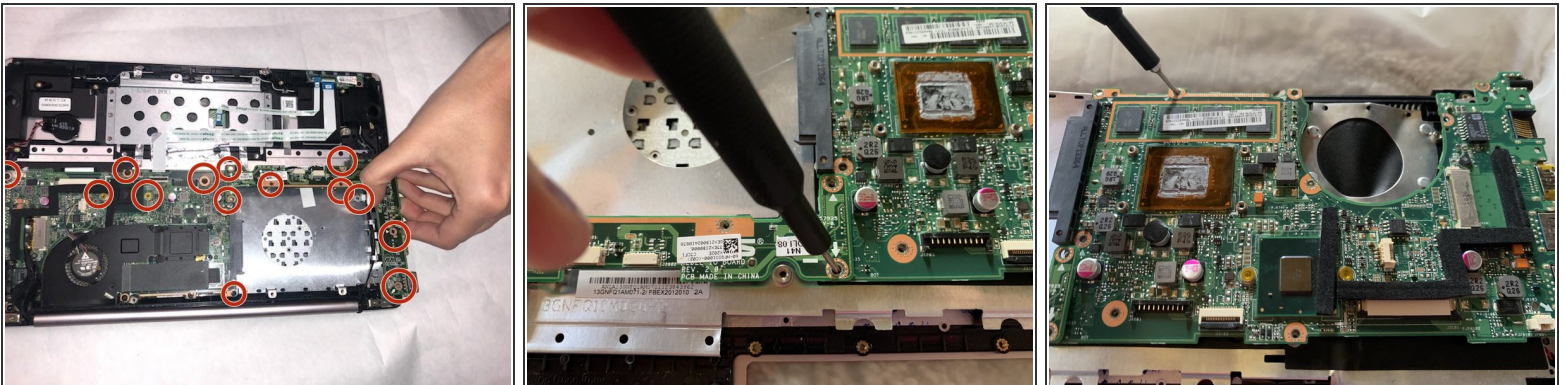
⚠ Gently remove the battery to avoid damage.

Step 3



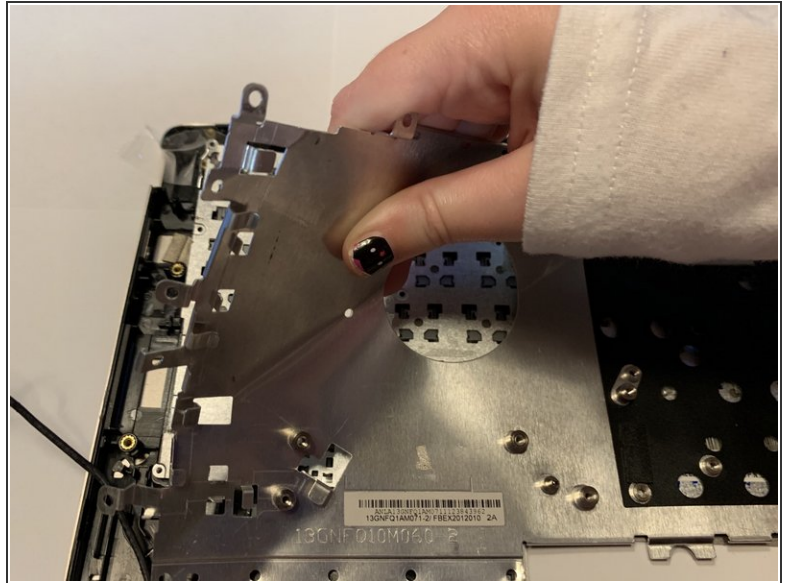
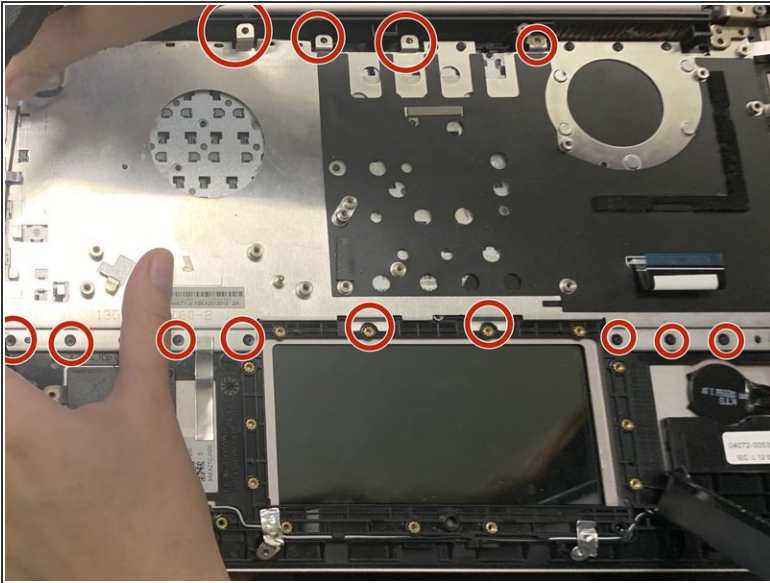
- Use the Phillips #0 screwdriver to remove the five 5mm screws around the fan.
 - Use the precision tweezers to unplug the fan cords.
- ⚠ Be cautious of pulling the cords.

Step 4



- Use the Phillips#0 screwdriver to unscrew the 3.5mm screws from around the motherboard and the 6mm screws from around the PCB.
- ⚠ Double check for unloosened screws. Bending the boards can damage the hardware.

Step 5



- Use the Phillips#0 screwdriver to remove the 50mm screws on the boarder of the metal panel.

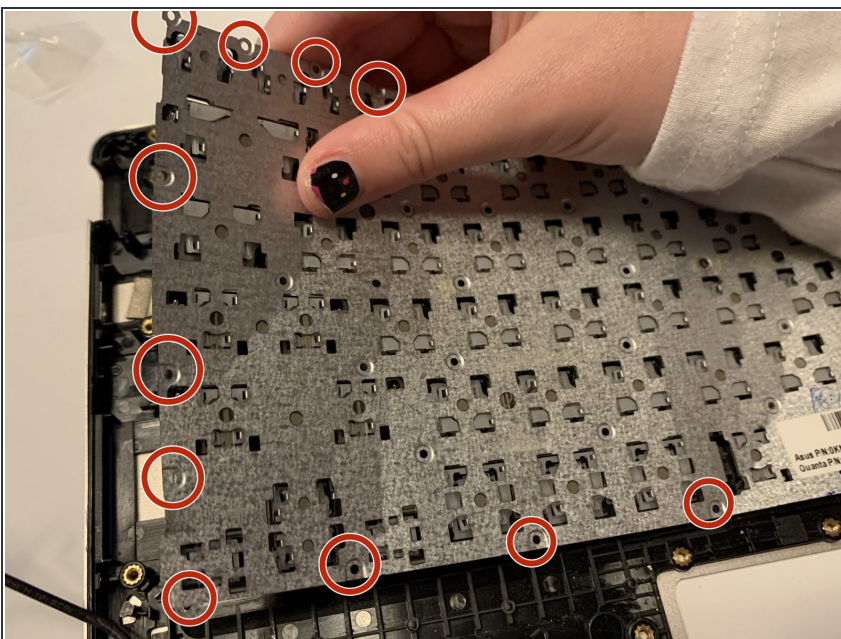


Be cautious of sharp metal edges.



Carefully remove the panel. Without care it will bend and be difficult to reassemble.

Step 6



- Using the Phillips#0 screwdriver, remove the 50mm screws surrounding the keyboard.



Be cautious of sharp metal edges.

- Gently remove the keyboard.

To reassemble your device, follow these instructions in reverse order.