



Asus VivoTab RT TF600T Screen charging port Replacement

This guide will provide the required information to replace the charging port on the Asus Vivo Tab RT TF600T detachable screen.

Written By: Joseph C Reneau



This document was generated on 2019-09-23 02:38:22 PM (MST).

INTRODUCTION

If your Asus Vivo Tab is not charging and you have ruled out the charger then this guide is for you. This guide will instruct you on how to remove and replace the charging port inside the tablet portion of your Asus Vivo tab.




TOOLS:


- [Phillips #00 Screwdriver](#) (1)
 - [iFixit Opening Tools](#) (1)
 - [Philips 000 Screwdriver](#) (1)
 - [Metal Spudger](#) (1)
-

Step 1 — Screen charging port



 Make sure the tablet is turned off.

- Remove the tablet from the attached keyboard.

 To remove the keyboard, simply depress the switch on the left side of the screen and pull the tablet portion off.

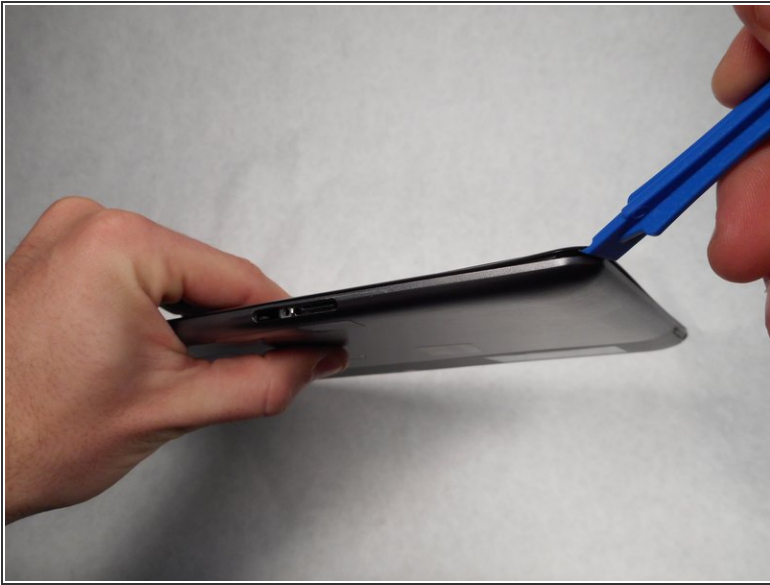
Step 2




- Rotate the device 180°, and remove the two 1.59 mm screws at the bottom of the device.

 Use the Phillips screwdriver size PH000 to remove the two 1.59 mm screws.

Step 3



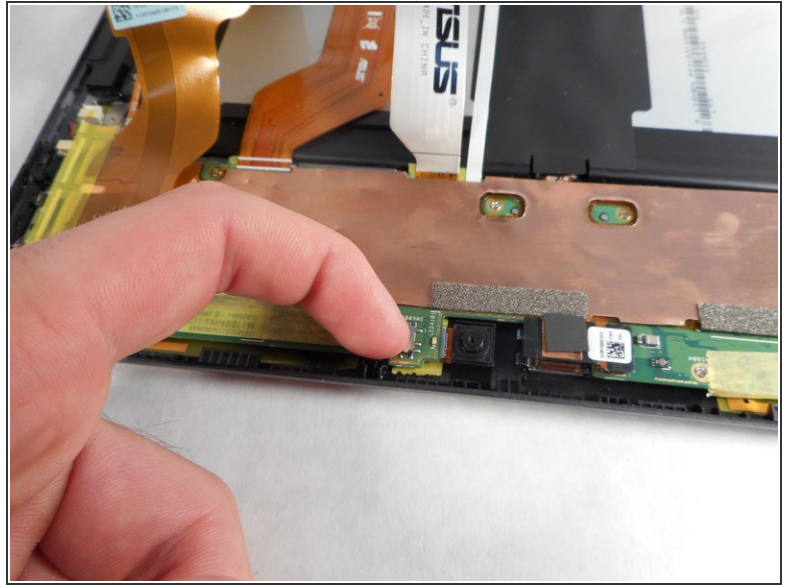
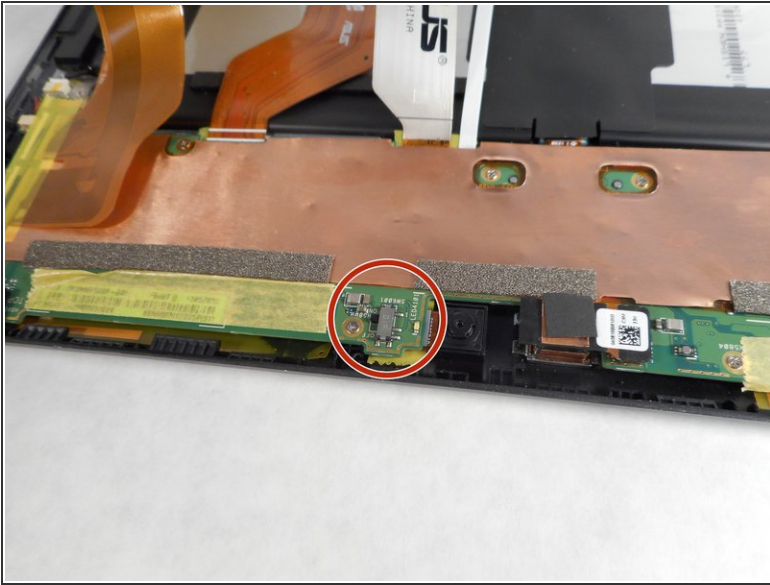
-  Use the plastic opening tool to help detach the screen from the back panel.
- Insert the plastic opening tool into the bottom right corner and gently start to pry off the screen.
 - Once the screen begins to separate from the body of the device, start working the tool around the outer edges until the entire screen becomes detached.

Step 4



- Now that the screen is completely detached, lay the back panel flat on a smooth surface.
- Lift the screen to view the inside of the tablet.

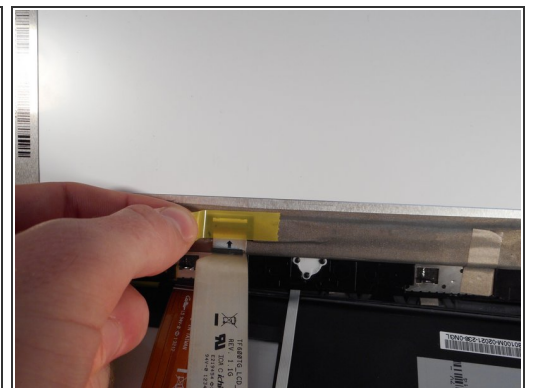
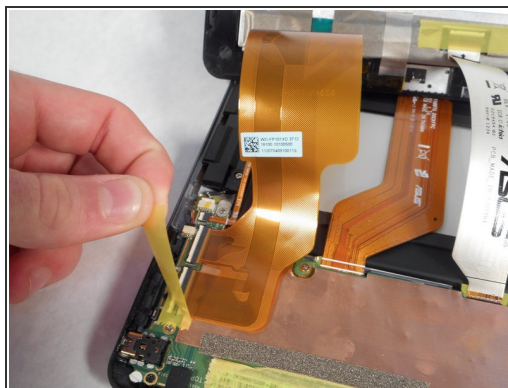
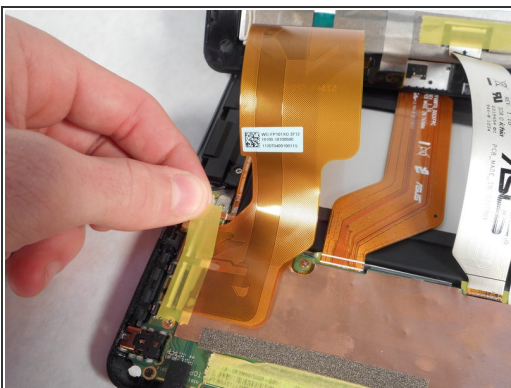
Step 5



- Before disconnecting the display cables, turn off the switch labeled DIP; this switch is used to de-energize the system.

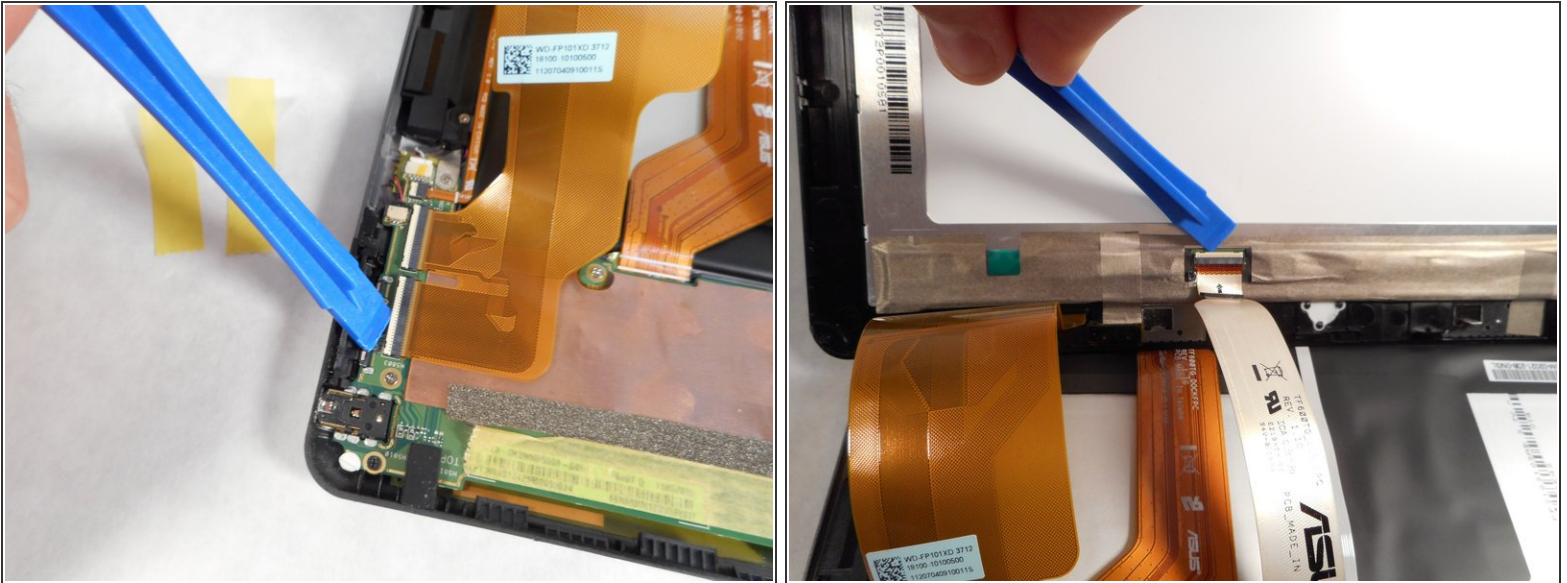
⚠ The battery is connected to the motherboard. To avoid any short circuiting of the device, you must place the switch labeled DIP to OFF.

Step 6



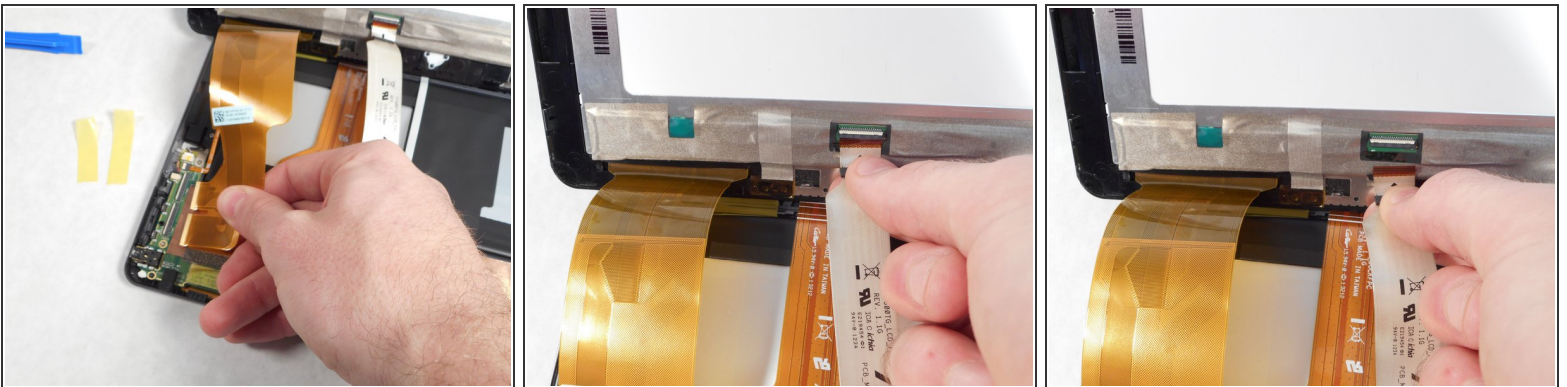
- Remove the yellow tape covering the end of the cables.

Step 7



- After lifting the yellow tape, you should be able to see a white strip. The white strip is actually a lever.
- ① Use the plastic opening tool to push in the levers.

Step 8



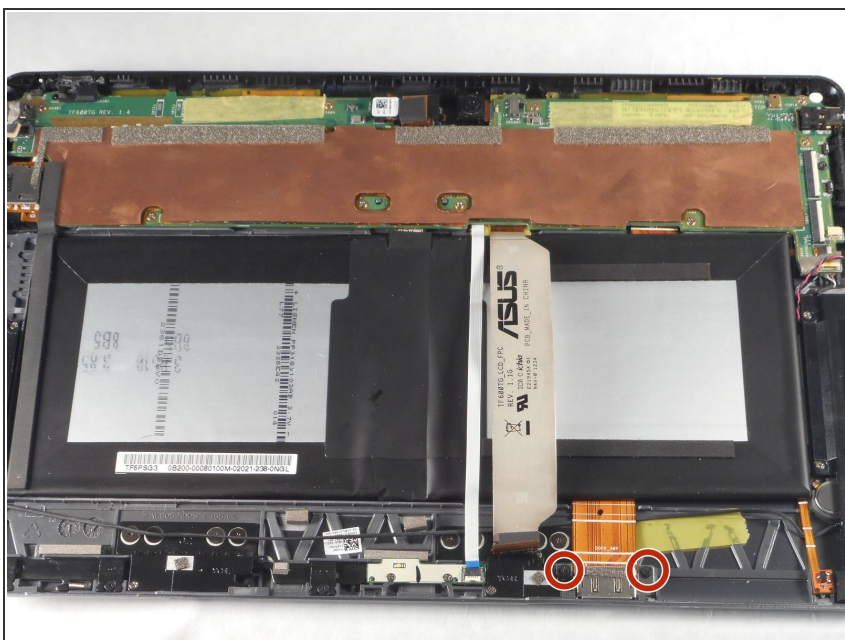
- With all three white levers pushed in, gently pull on each display cable until the cable disconnects.

Step 9



- Lift the screen upwards to remove.

Step 10



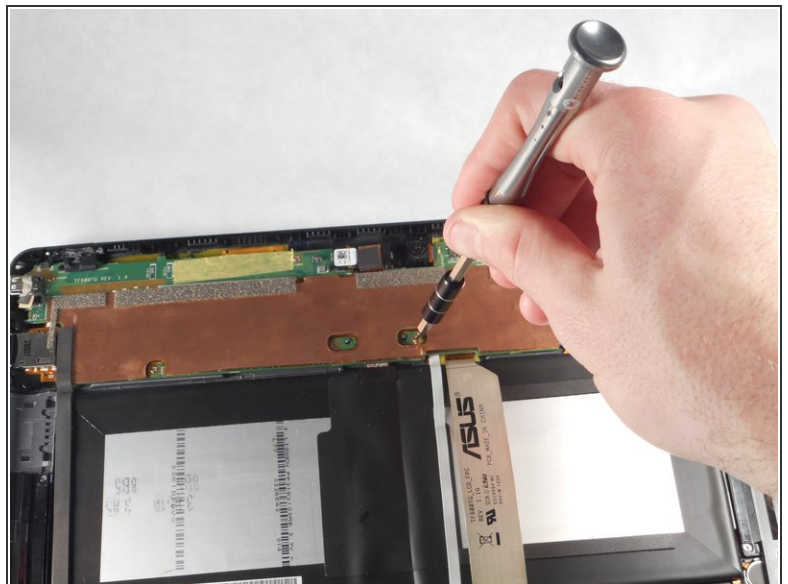
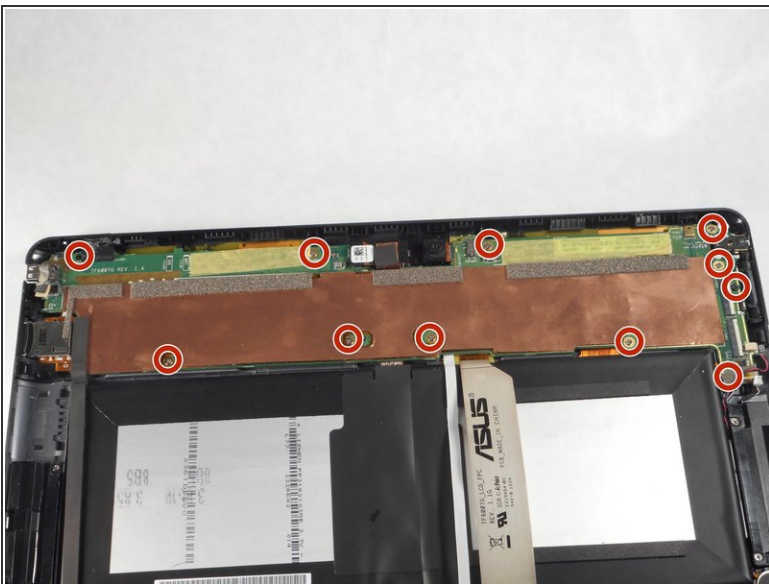
- Rotate the tablet clockwise, so the charging port is turned towards you.
- Remove the two 0.79 mm #00 screws from the charging port with the Philips #00 Screwdriver.

Step 11



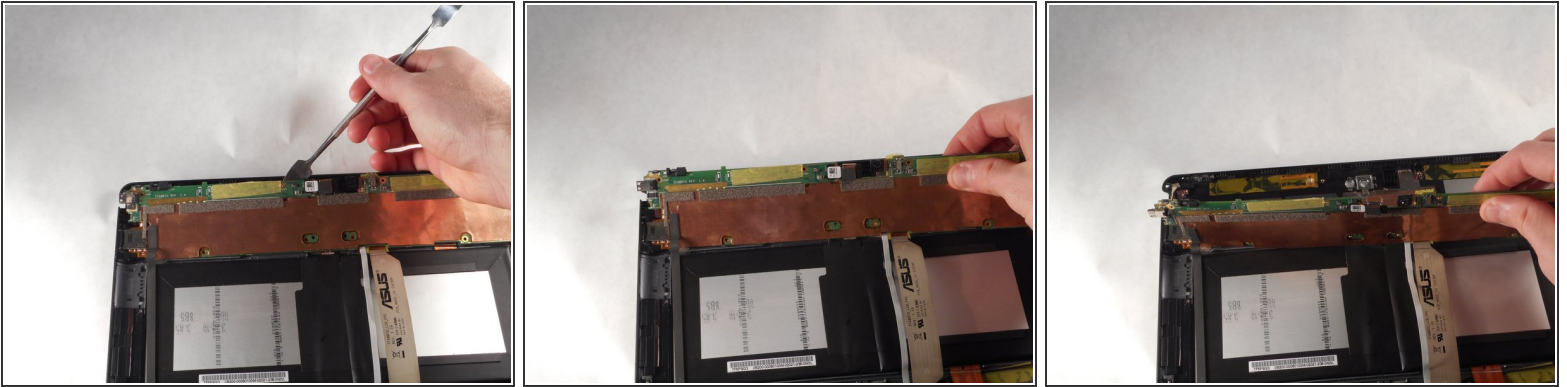
- Place the plastic opening tool behind the charging port, closest to the outer edge of the device.
- Gently pry the charging port away from the frame.

Step 12



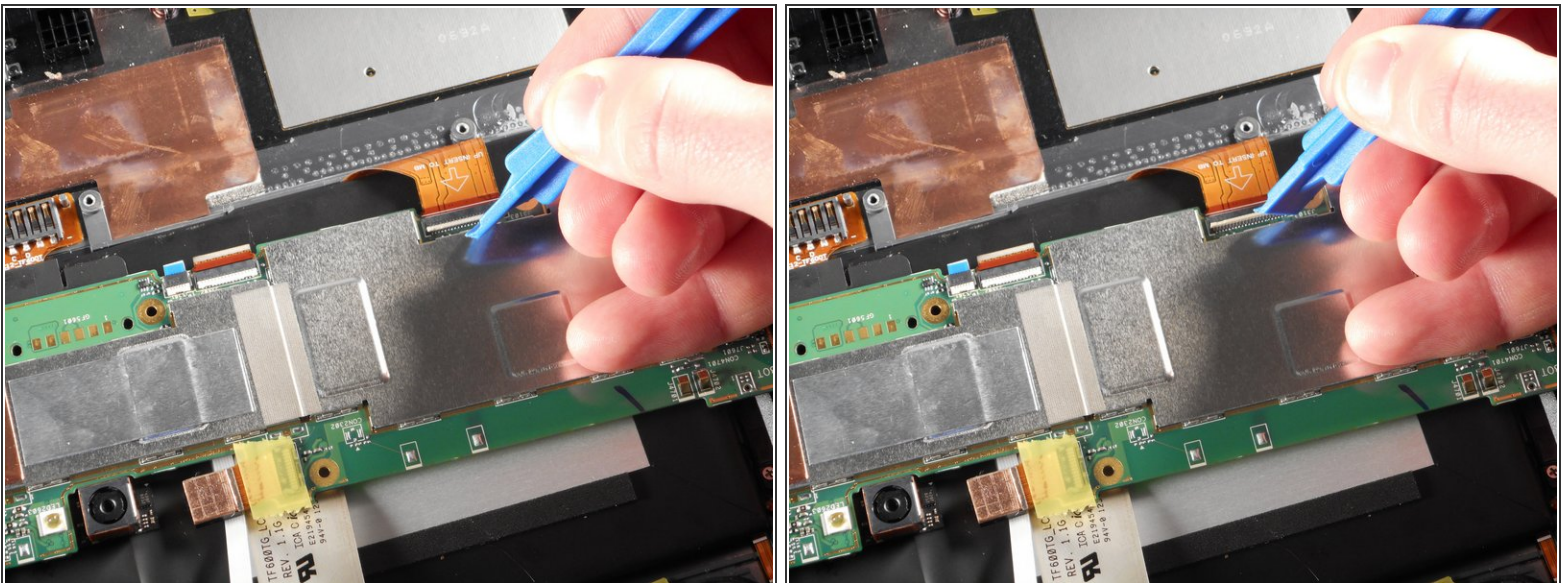
- Remove the eleven 0.79 mm #000 screws around the motherboard with the Phillips #000 screwdriver.

Step 13



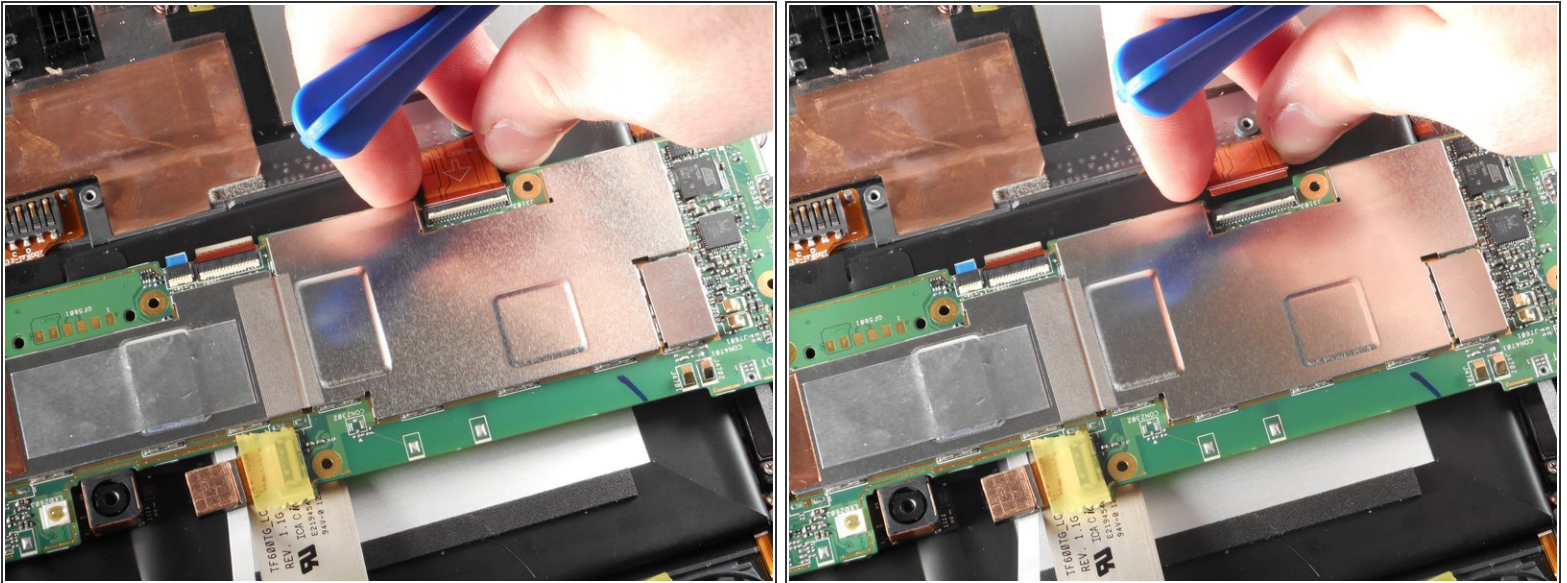
- Use the nylon or metal spudger to help pry the motherboard from the back panel.
- Once the mother board is relieved from the glue, use your hand to lift the motherboard up and to the opposite end of the back panel.

Step 14



- Flip up the white lever with the plastic opening tool to release the connection.

Step 15



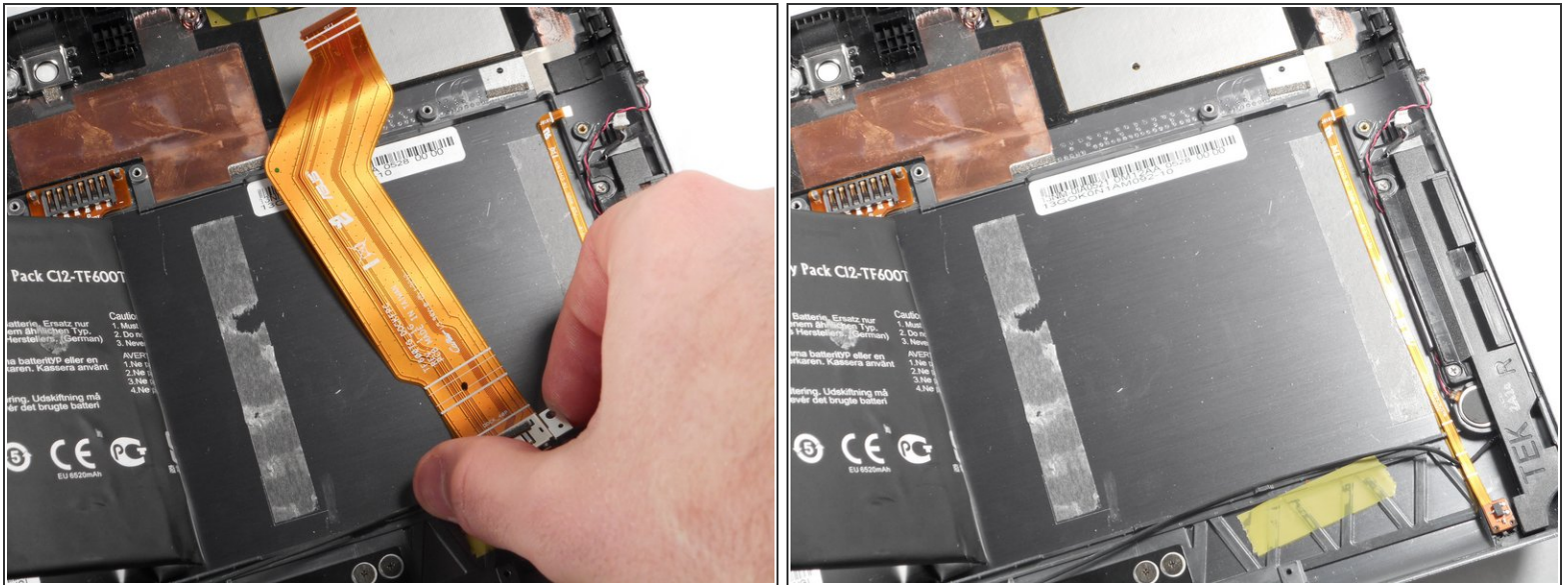
- Gently remove the charging port ribbon piece from the motherboard. It should come out easily using your fingers.

Step 16



- ① Use the nylon or metal spudger to pry the battery from the back panel.
- Flip the right side of the battery up to expose the charging port cable.

Step 17



- Remove the charging port and replace it.

To reassemble your device, follow these instructions in reverse order.