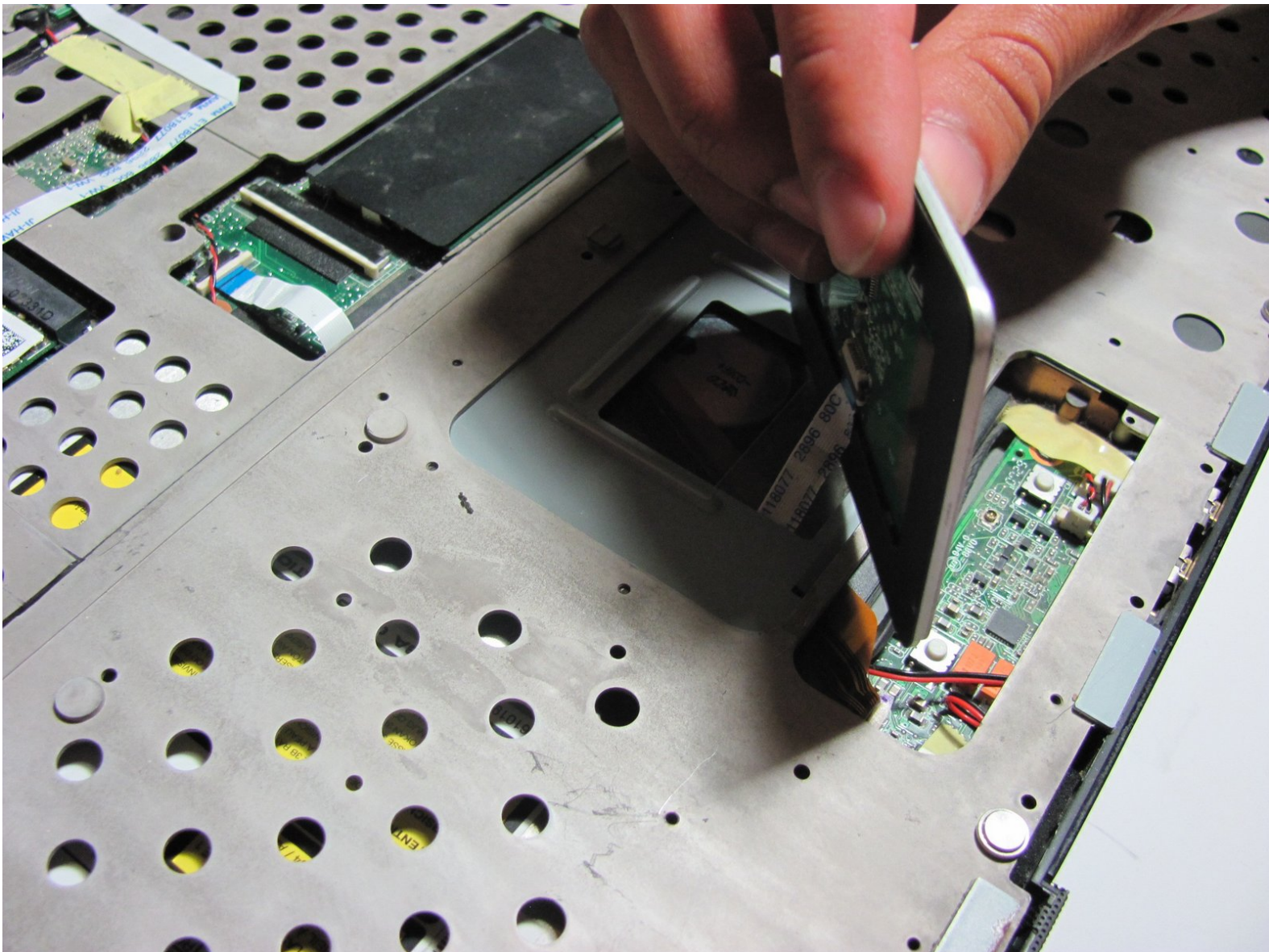




Asus W2W-A1 Touchpad Replacement

Remove your Asus W2W-A1 touchpad to replace it or access the components beneath it.

Written By: Nolan Schock





TOOLS:

- [Phillips #0 Screwdriver](#) (1)
 - [Spudger](#) (1)
-

Step 1 — Keyboard



- Remove the battery, then unscrew the 7 3 mm Phillips screws behind the battery. Make sure they go in separate, organized piles.
- Unscrew the 2 4 mm Phillips head screws by the battery.

Step 2



- Remove the panel above the keyboard with a plastic spudger.

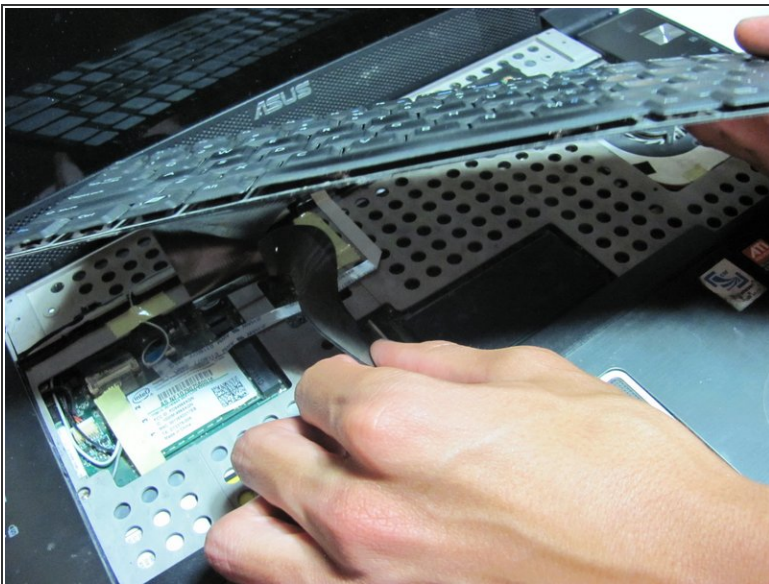
Step 3



- Once the panel is removed, use the spudger to pry out the keyboard.

⚠ Do not fully remove, for the keyboard is still attached to the ribbon cable.

Step 4



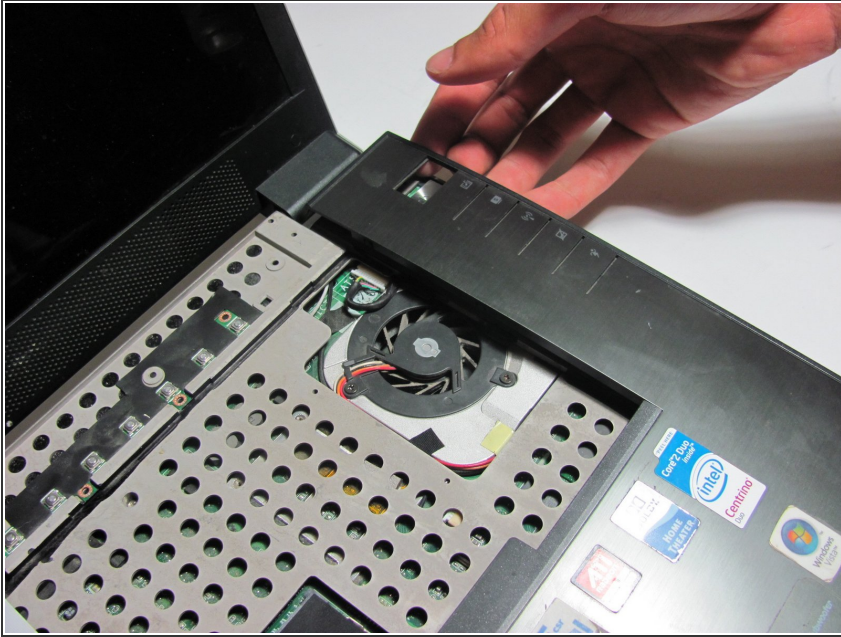
- Detach the ribbon cable from the keyboard by pulling the end of the ribbon cable that is attached inside of the laptop.

⚠ Be sure to detach from the root rather than from near the middle. It should slide out with ease.

- Now you can fully remove the keyboard from the laptop.

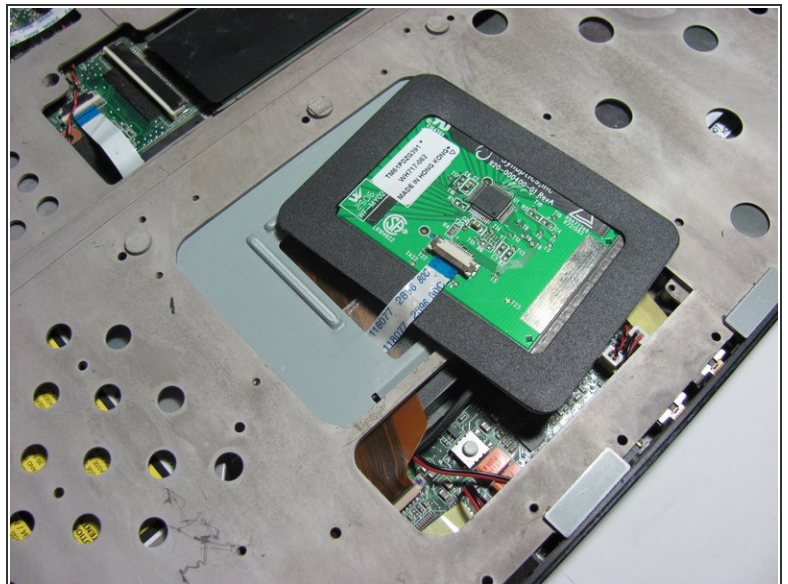
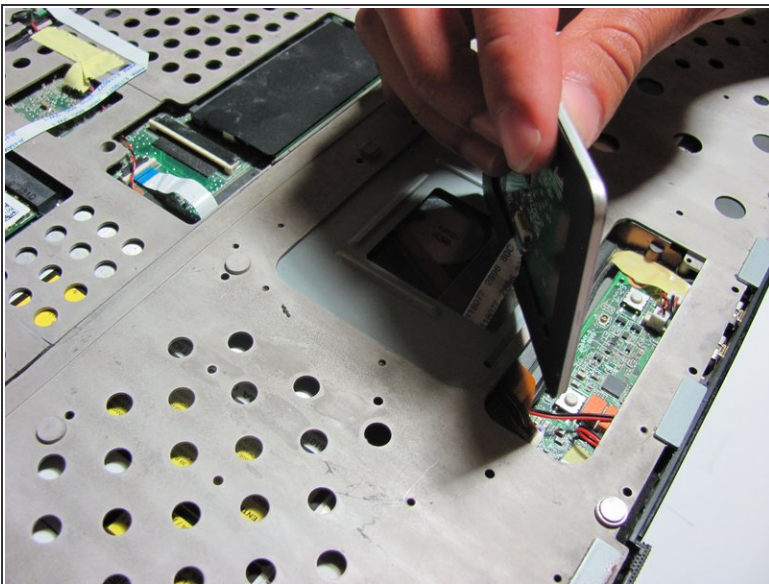
This document was generated on 2019-09-18 03:40:46 PM (MST).

Step 5 — Front Panel



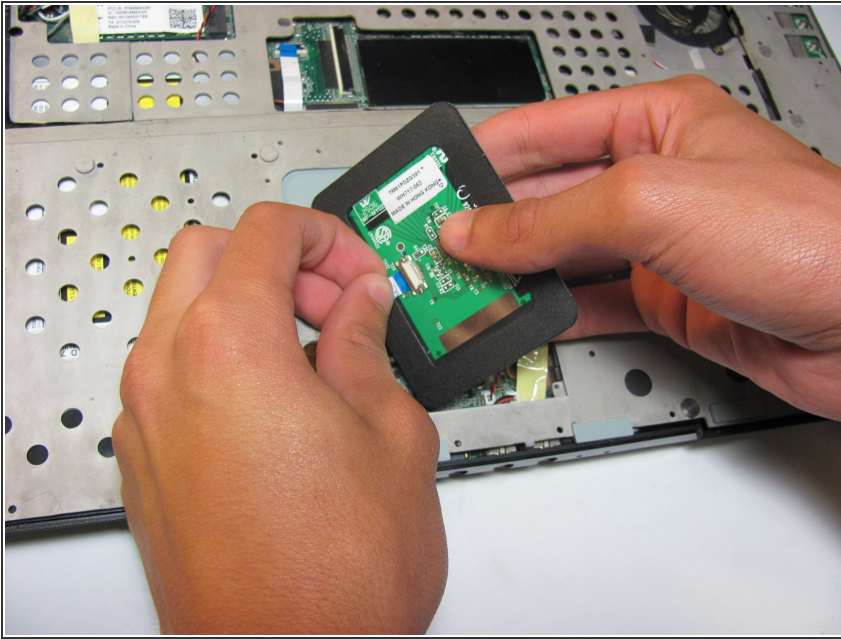
- Place your fingers or a spudger between the front panel and the rest of the laptop.
- Pull upwards gently to detach the side you are grabbing.
- Repeat on the other side until the panel easily peels off the laptop.

Step 6 — Touchpad



- The touchpad should be loosely attached to the rest of the laptop by a ribbon cable.

Step 7



- Gently pull the ribbon cable out of its socket attached to the touchpad.
- You are now able to remove the touchpad.

To reassemble your device, follow these instructions in reverse order.