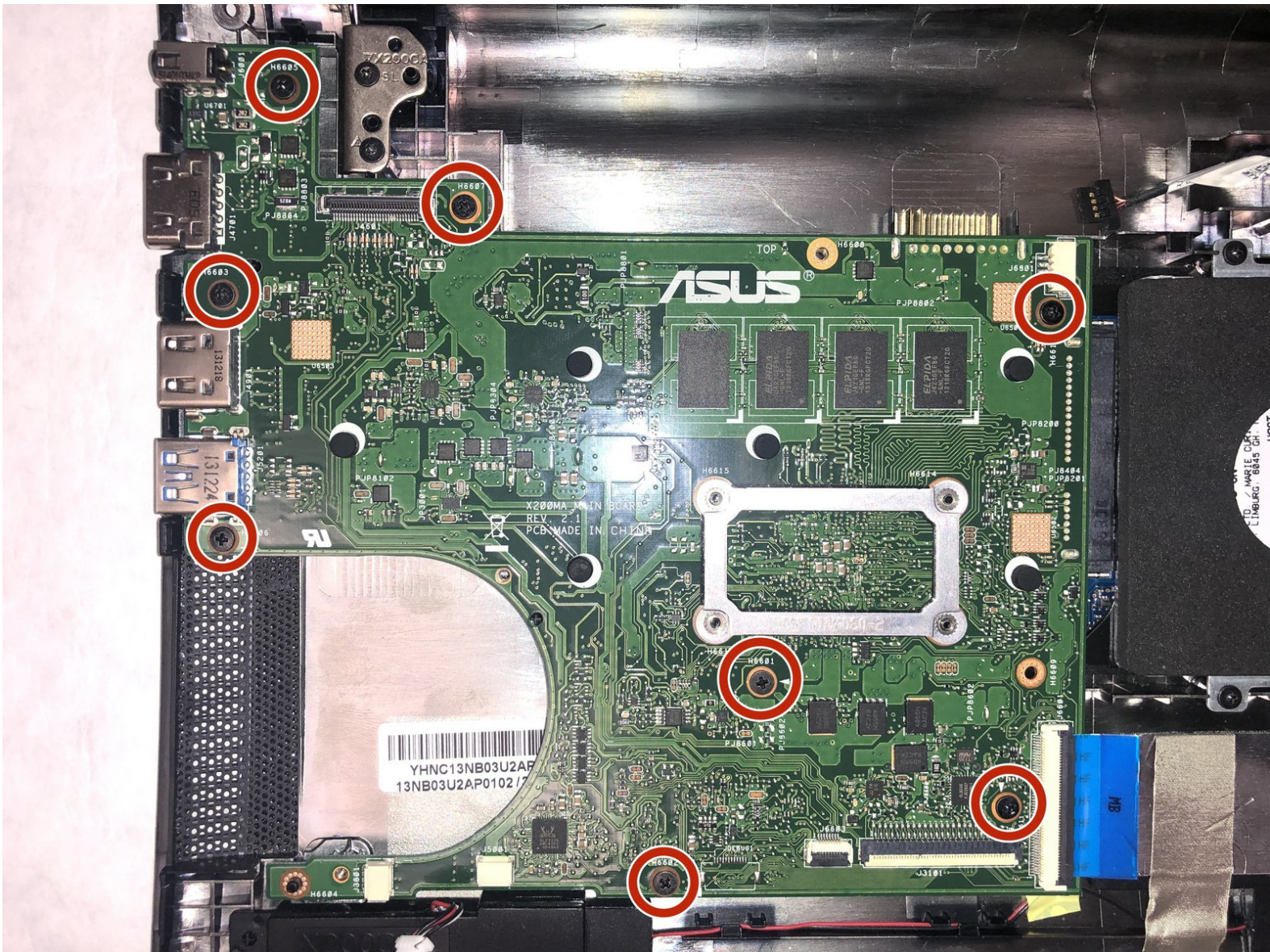




Asus X200MA Motherboard Replacement

This guide will show how to remove and replace the motherboard in your Asus X200MA laptop.

Written By: Alli Krininger



INTRODUCTION

This guide provides step-by-step instructions on the replacement of the motherboard of ASUS X200MA. This guide can be used to upgrade or replace an obsolete, malfunctioning, or a damaged motherboard. Use caution when removing and installing the motherboard as it is connected to the hard drive.



TOOLS:

- [Tweezers](#) (1)
 - [Spudger](#) (1)
 - [Phillips #0 Screwdriver](#) (1)
 - [Metal Spudger](#) (1)
-

Step 1 — Back Panel



- Remove the following six screws:
 - Six 4 mm screws using a Phillips #0 screwdriver.
 - Remove the following one screw:
 - One 14 mm screw using a Phillips #0 screwdriver.
- ☑ The 14mm screw goes in the center.

Step 2



- Use a plastic or metal spudger to separate the keyboard from the back panel and lift the keyboard out of place.

Step 3 — Battery



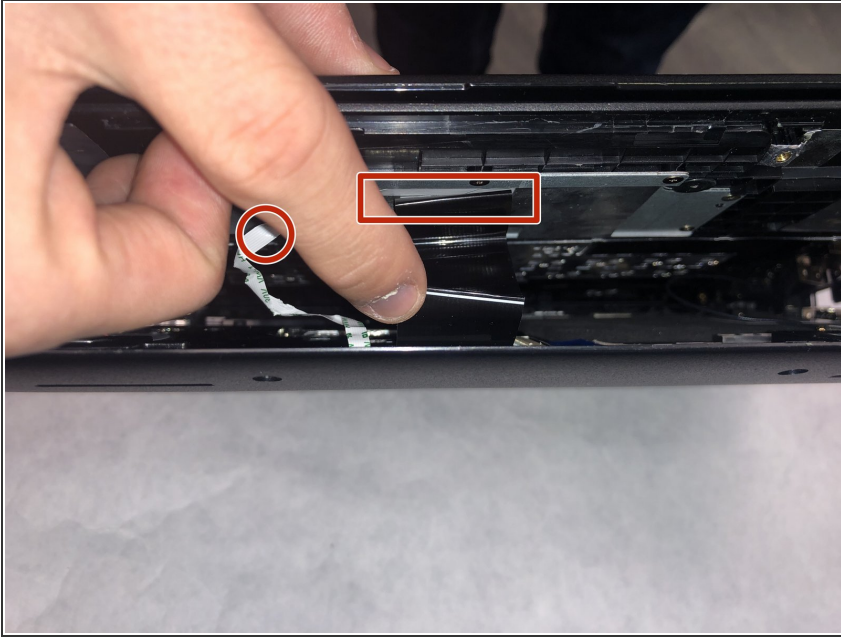
- Take two rubber caps off the back side of the laptop.

Step 4



- Remove the following two screws under the rubber caps.
- Two 14 mm screws using the Phillips #0 screw driver.

Step 5



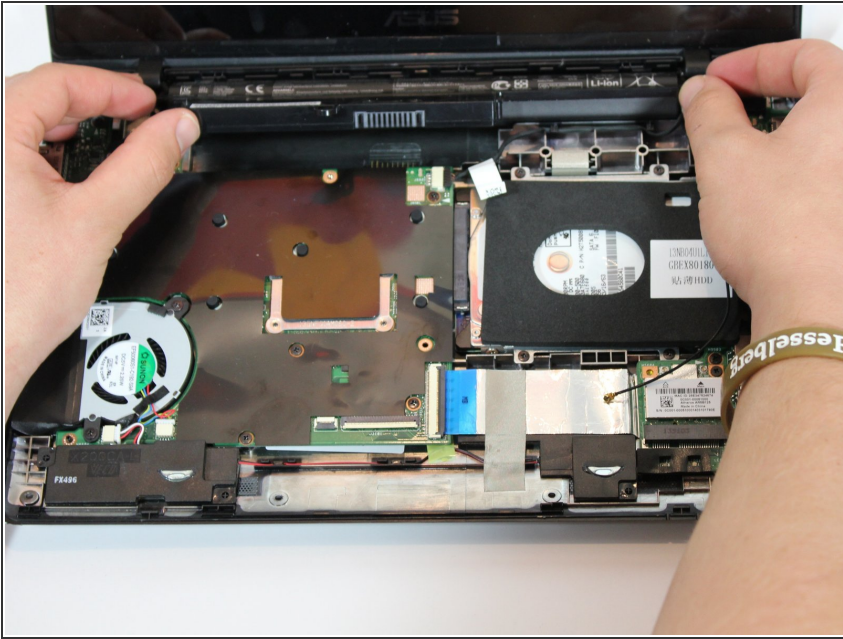
- Flip up the following:
 - The two latches holding the two cables shown(white and black)
- Pull the cables free from the latches
- Lift the keyboard from the computer

Step 6



- Remove the following screws from the inside of the laptop:
 - Two 4 mm screws using the Phillips #0 phillips screwdriver.
 - One 5 mm screw using the Phillips #0 Phillips screwdriver located in the center a little below the battery.

Step 7



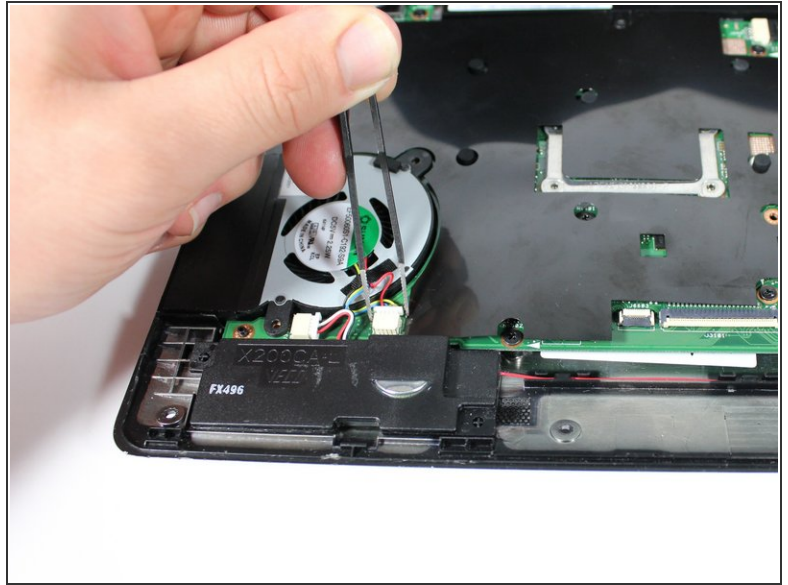
- Slide the battery up and out.

Step 8 — Fan



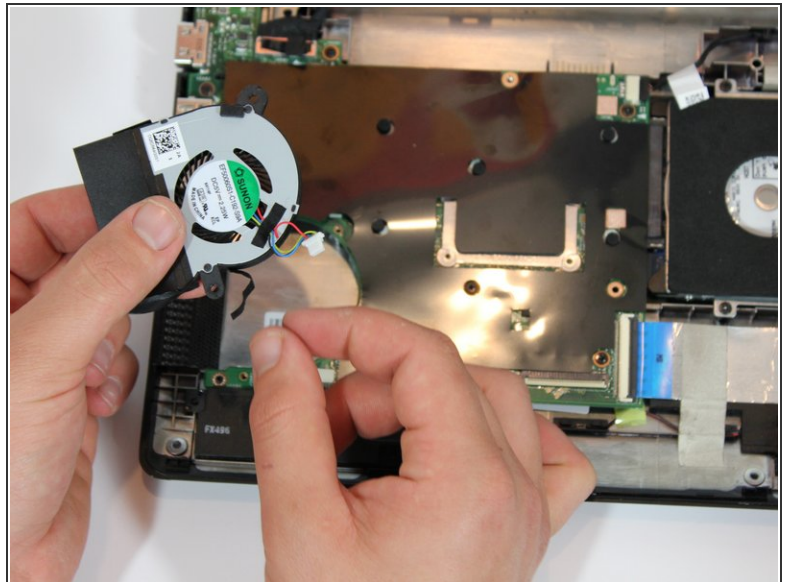
- Remove the Two 4 mm screws using Phillips #0 phillips screwdriver.

Step 9



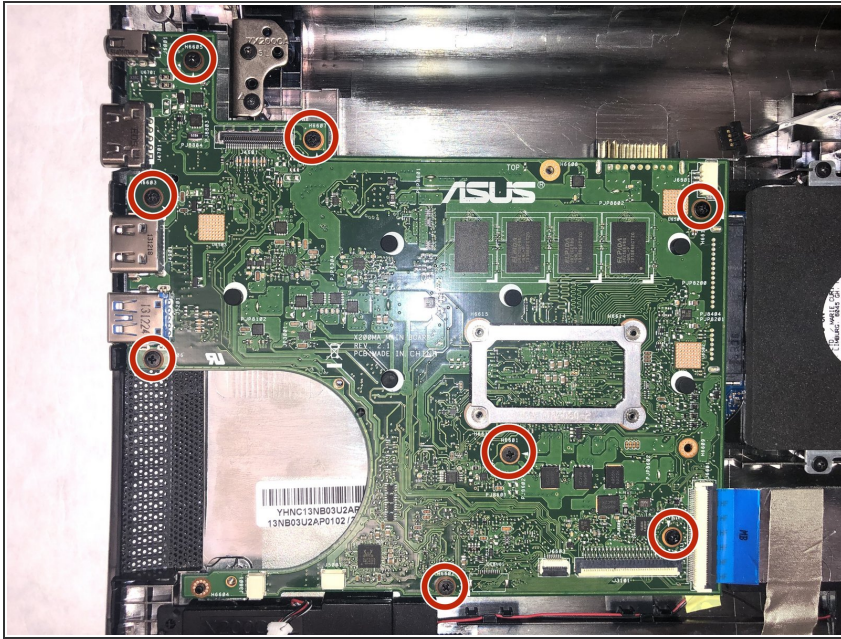
- Unplug the set of wires located at bottom corner on fan.

Step 10



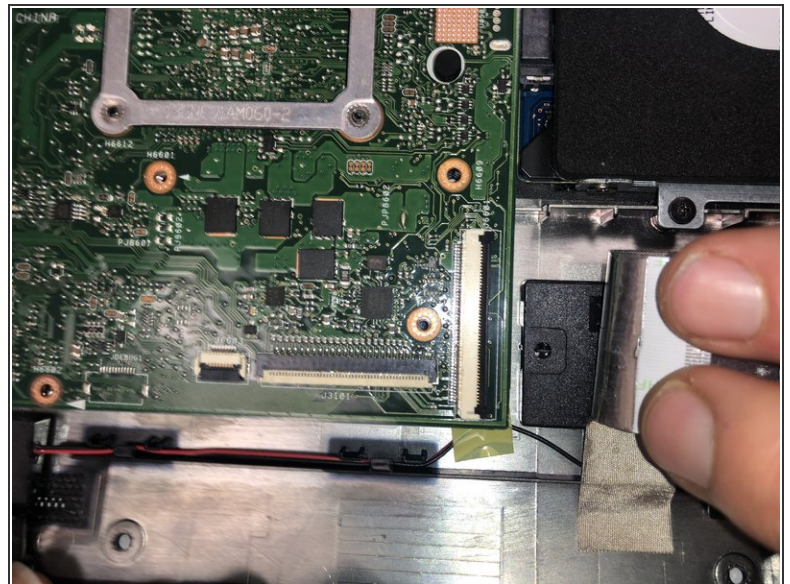
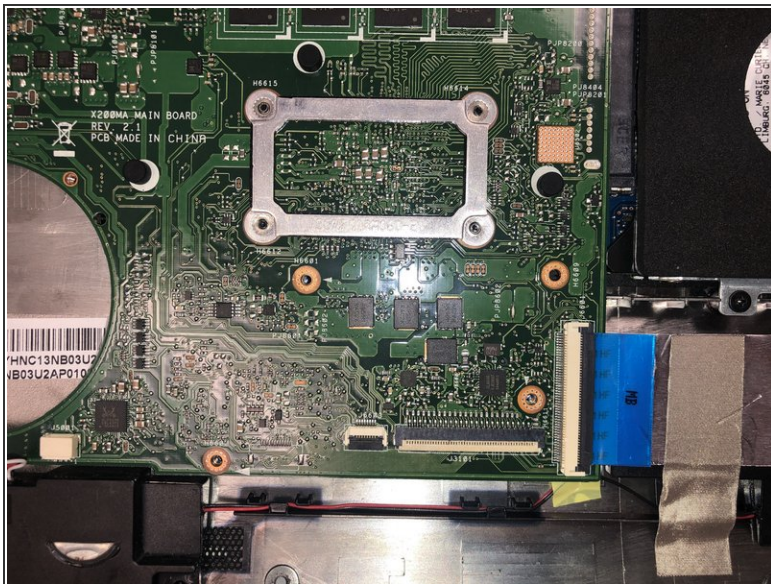
- Lift up and out to completely the remove fan component.

Step 11 — Motherboard



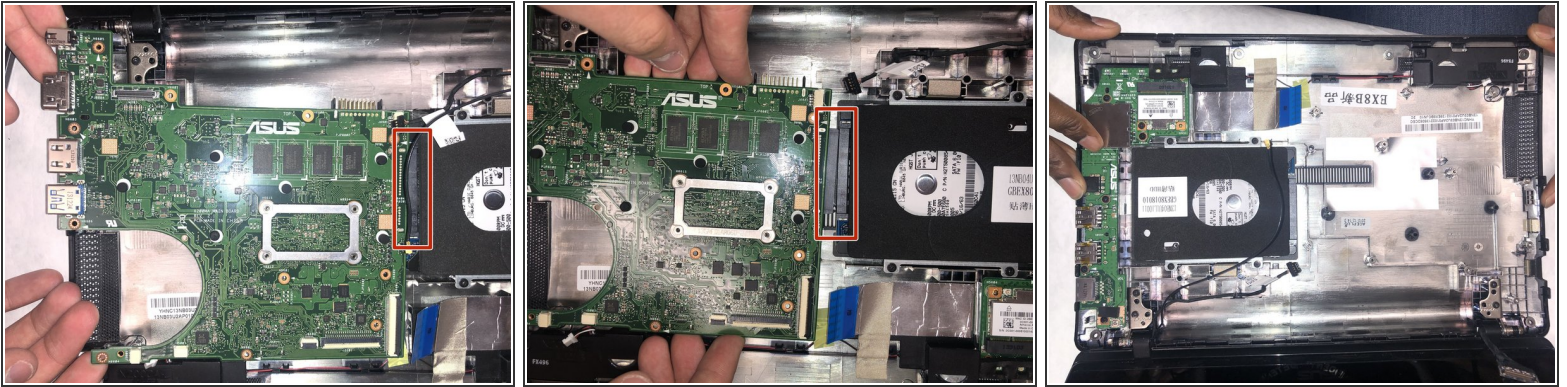
- Use Phillips #0 screwdriver to remove the eight 4.0 mm screws.

Step 12



- Pull back the blue ribbon, freeing it from the latch.

Step 13



- Lift and pull the motherboard out from the hard drive and remove it from the base plate.

To reassemble your device, follow these instructions in reverse order.