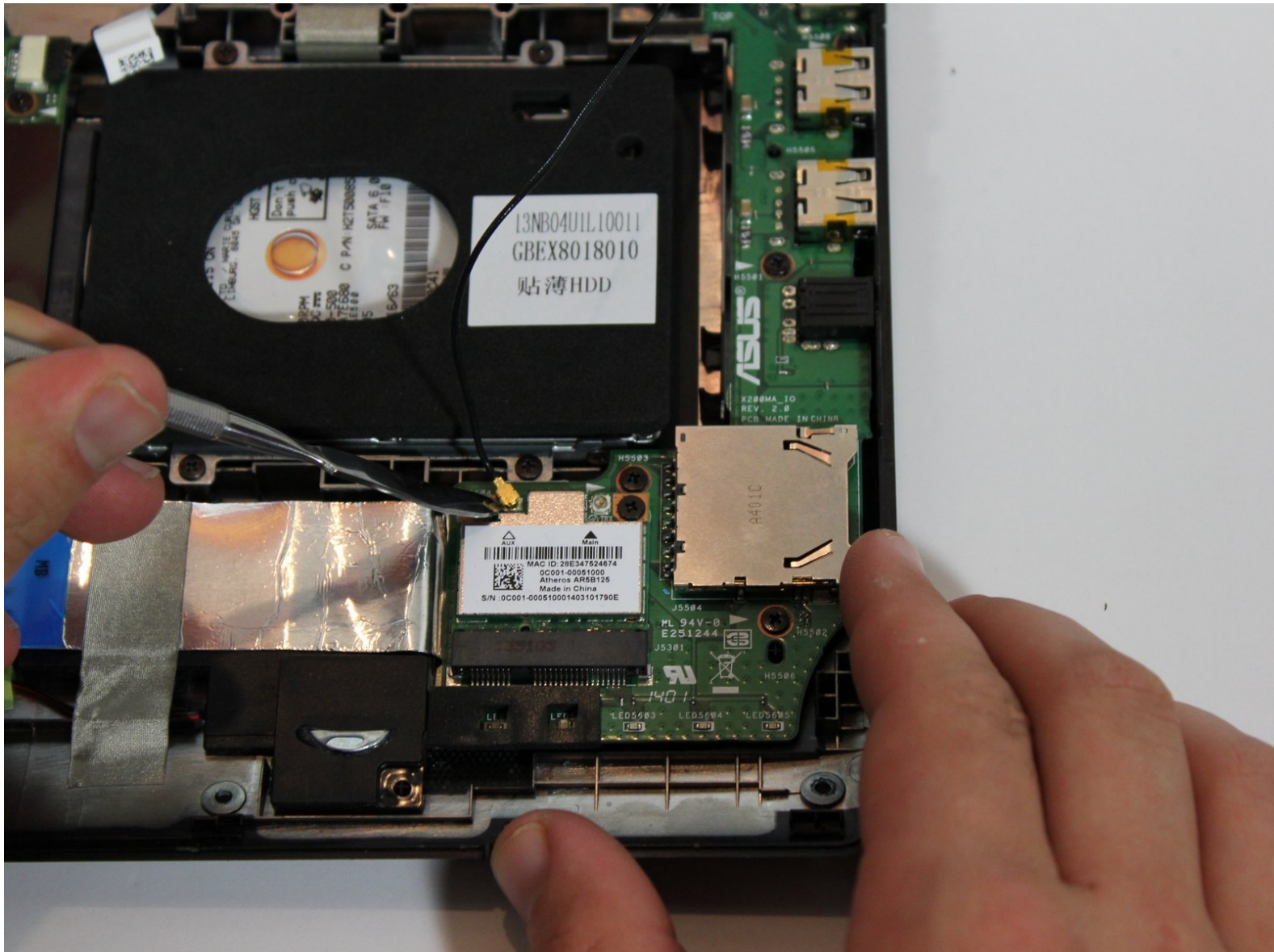




Asus X200MA Wireless Card Replacement

Written By: Vanessa Garcia





TOOLS:

- [Phillips #0 Screwdriver](#) (1)
 - [Spudger](#) (1)
-

Step 1 — Back Panel



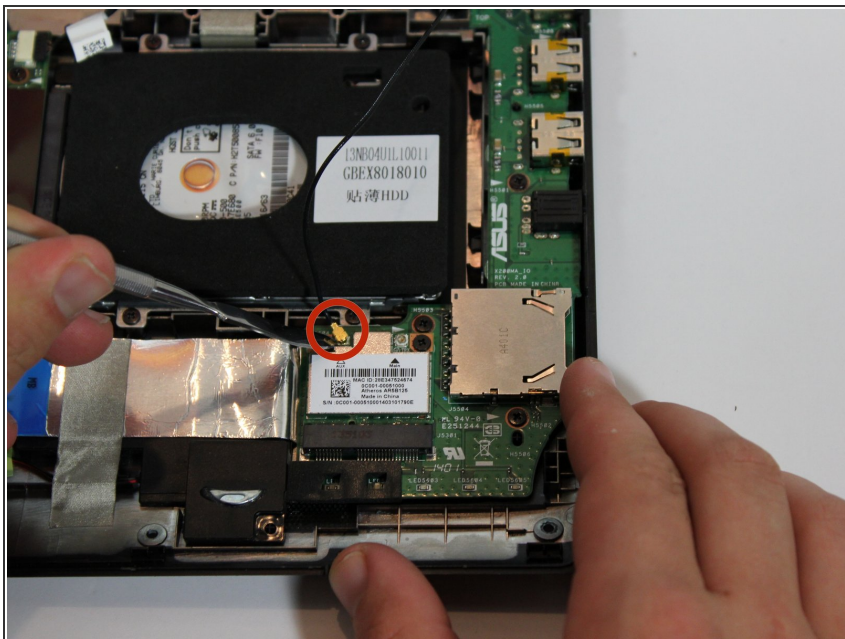
- Remove the following six screws:
 - Six 4 mm screws using a Phillips #0 screwdriver.
 - Remove the following one screw:
 - One 14 mm screw using a Phillips #0 screwdriver.
- ★ The 14mm screw goes in the center.

Step 2



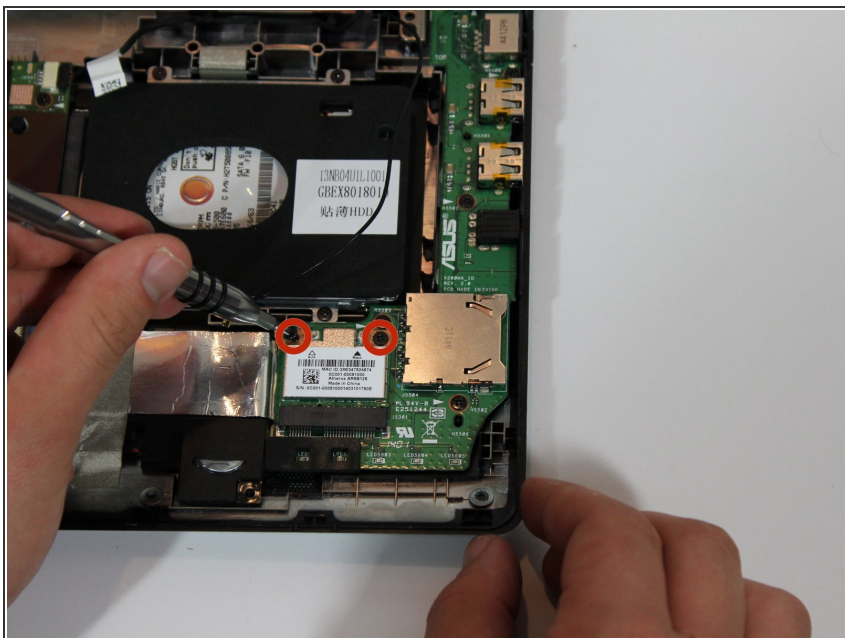
- Use a plastic or metal spudger to separate the keyboard from the back panel and lift the keyboard out of place.

Step 3 — Wireless Card



- Take gold cap that connects to a black wire off using the metal spudger.

Step 4



- Remove the following two screws:
 - Two 4 mm screws using Phillips #0 screwdriver.

Step 5



- Slide the component up and out.

To reassemble your device, follow these instructions in reverse order.