



Asus X401A Processor Replacement

Through this guide, you will be able to replace the processor in your Asus-X401A.

Written By: Tyler Stiles



INTRODUCTION

This guide will teach you how to take apart your laptop in order to get to the processor, fan, graphics card, and many other important components. Through the steps listed below, you will be able to identify and replace your laptop's processor!



TOOLS:

- [iFixit Opening Tools](#) (1)
 - [Magnetic Project Mat](#) (1)
 - [Phillips Head Screwdriver: Size PH1](#) (1)
 - [Flathead Screwdriver](#) (1)
-

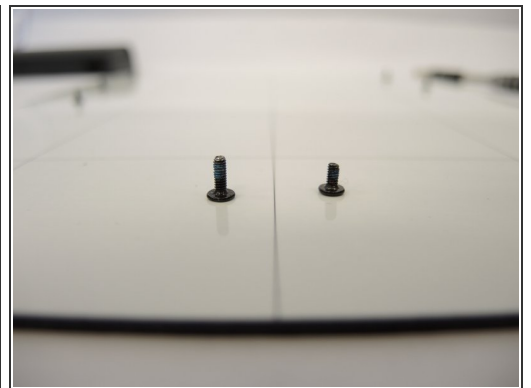
Step 1 — Processor



⚠ Turn your laptop off and unplug it from its charger prior to the repair to avoid electric shock.

- Turn your laptop over, and press on the latches to remove the battery.

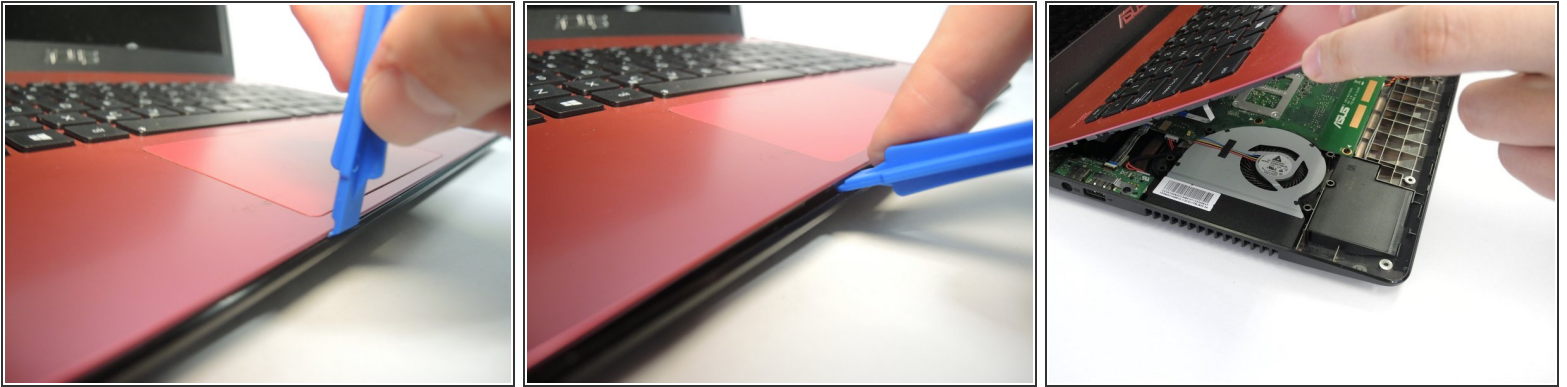
Step 2



- Unscrew the ten screws with a Phillips Head #1 screwdriver.
- Eight screws are 3mm.
- Two screws are 4mm.

ⓘ Place the screws on a magnetic mat.

Step 3

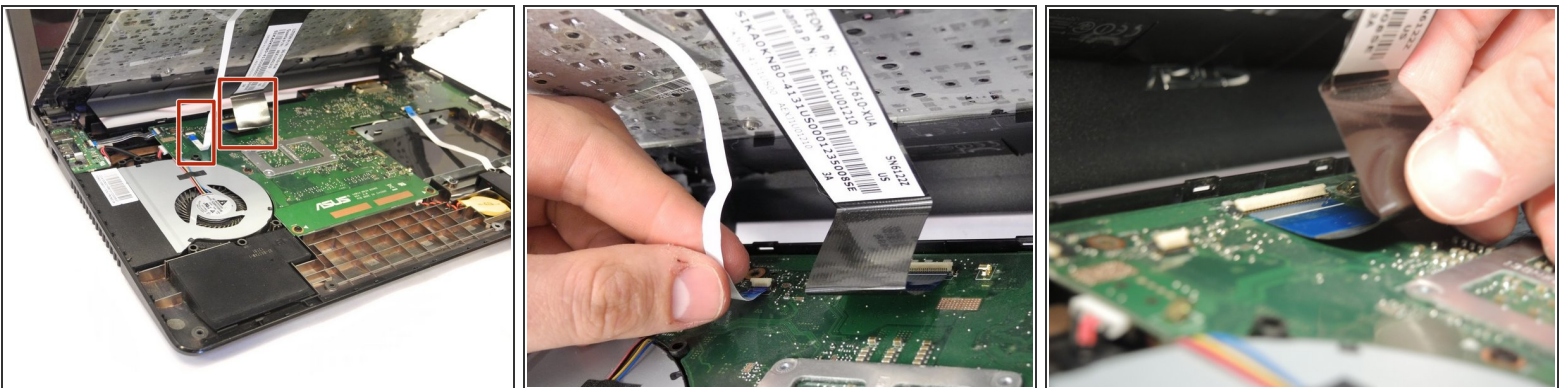


- Separate the keyboard from the back of the laptop with a plastic opening tool.

⚠ Do not completely separate the two pieces as there are ribbon cables that need to be disconnected.

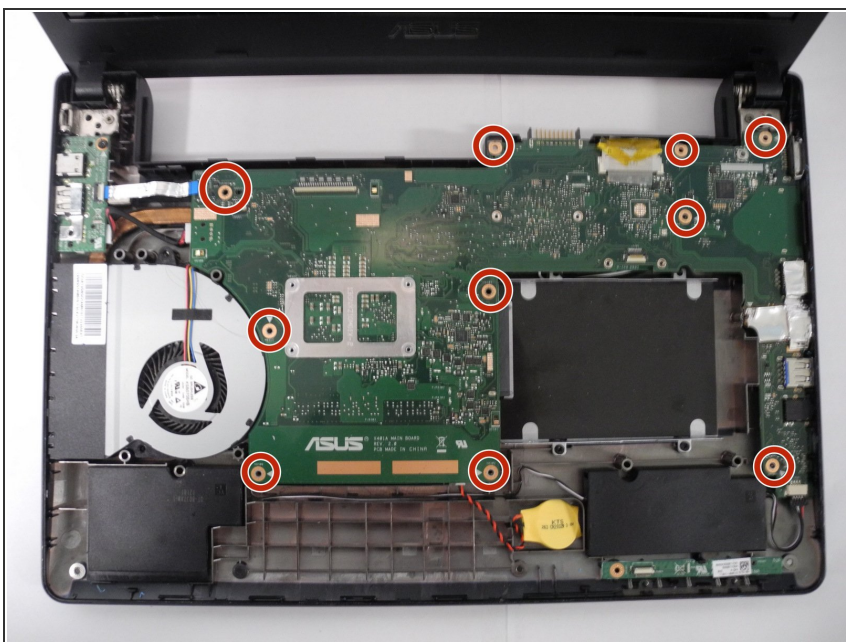
☑ When reassembling, you will hear snapping noises as the pieces connect together.

Step 4



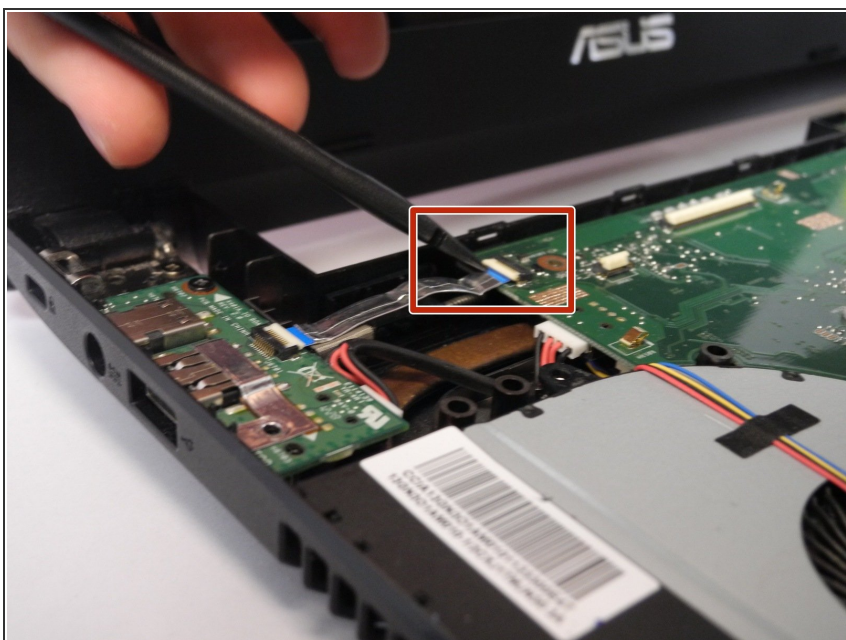
- Use a spudger to lift ZIF tabs up to disconnect the black and the white ribbon cable.

Step 5



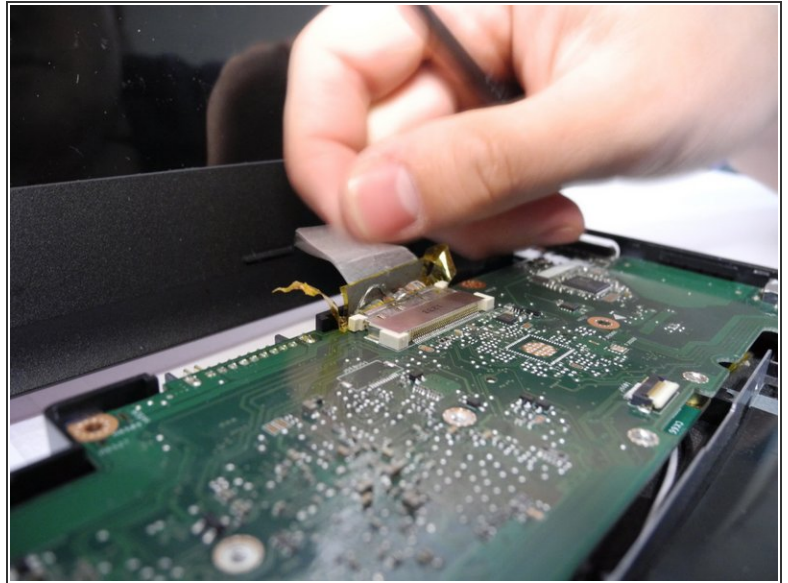
- Unscrew the ten 3mm screws with a Phillips Head #1 screwdriver,

Step 6



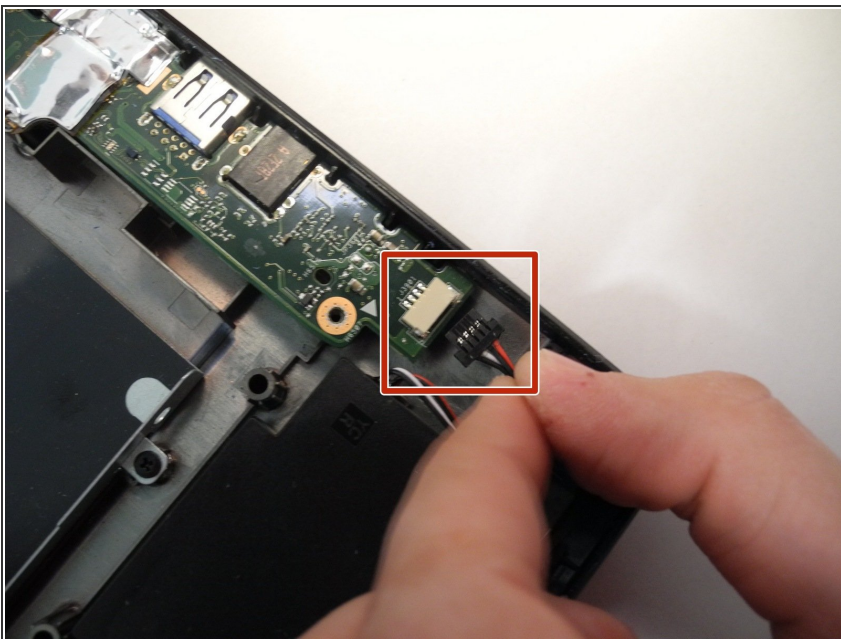
- Use a spudger to lift the ZIF connector up to release the ribbon cable.

Step 7



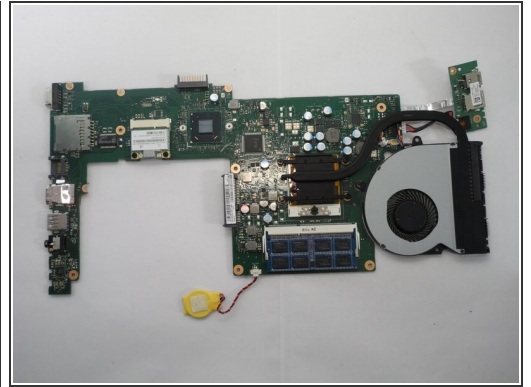
- Lift the connection between the screen and motherboard with a plastic spudger.
- Remove the yellow and the clear tape.

Step 8



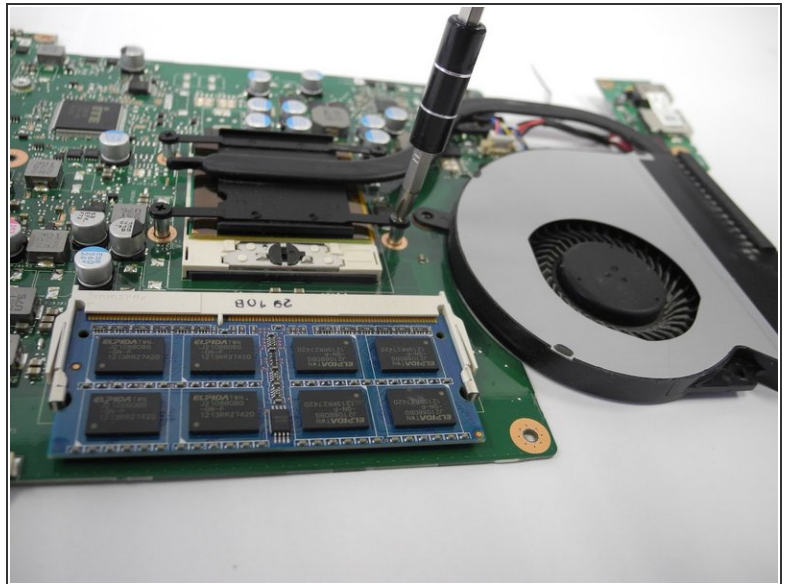
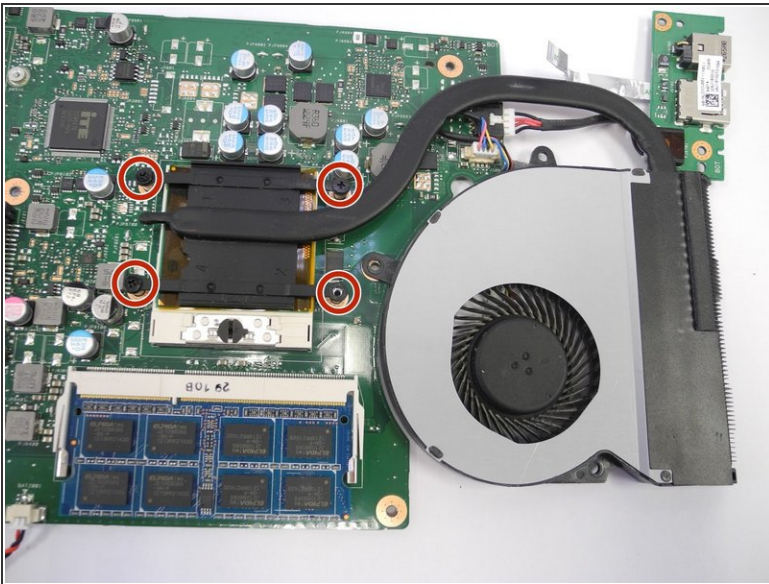
- Disconnect the wire connecting the speakers.

Step 9



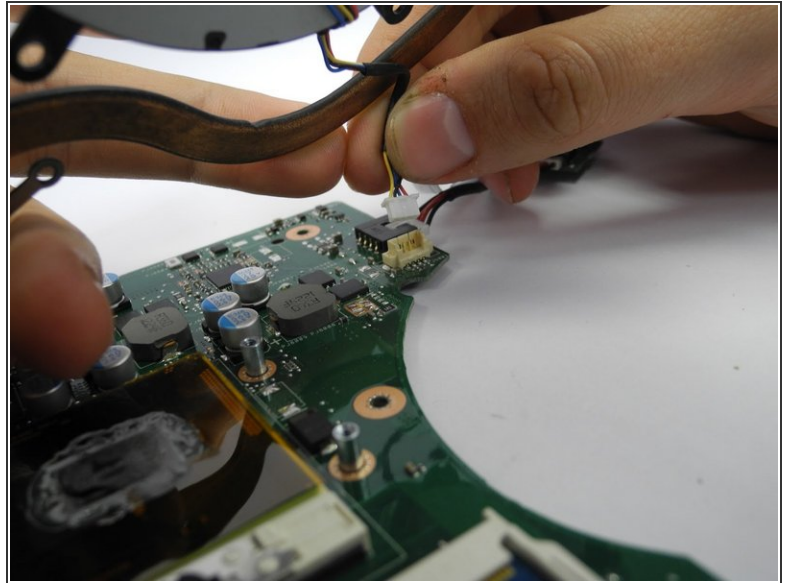
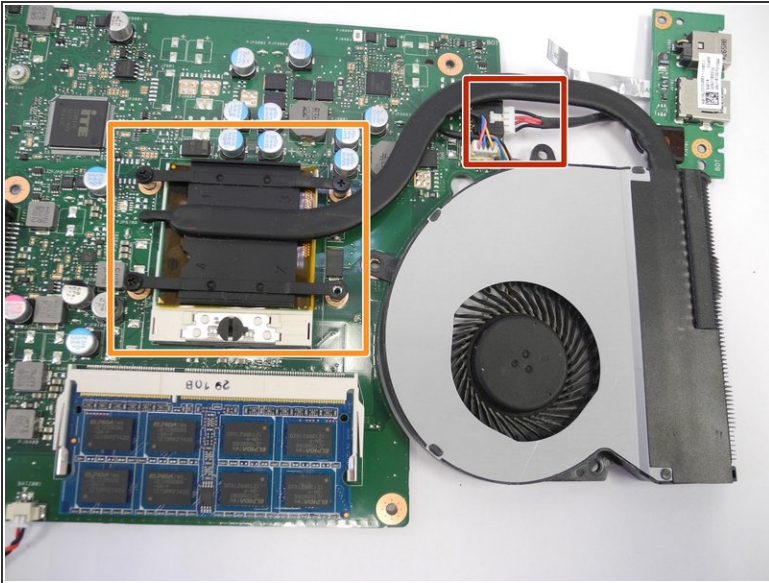
- Lift the motherboard from the frame with a plastic spudger.
- Set the frame of the laptop aside, and turn the motherboard over.

Step 10



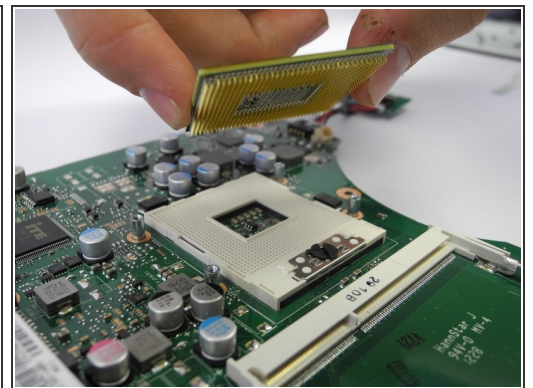
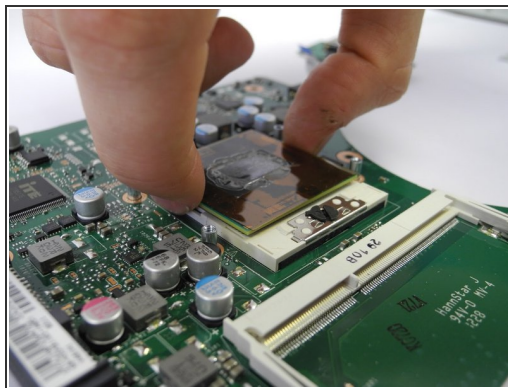
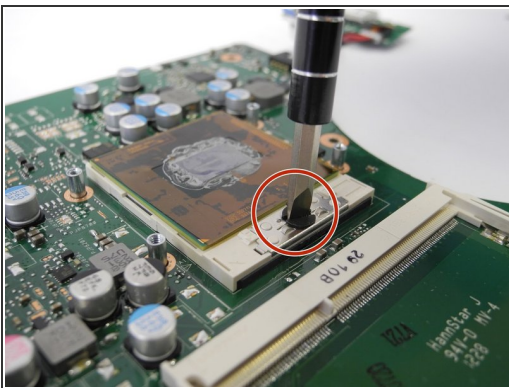
- Unscrew the four screws with a Phillips Head #1 screwdriver to disconnect the fan from the processor.

Step 11



- Disconnect the cable connecting the fan to the motherboard.
- Lift the fan part from the processor.

Step 12



- Unscrew the screw holding the processor to the motherboard with a flathead screwdriver.
- Lift the processor up away from the socket.

To reassemble your device, follow these instructions in reverse order.