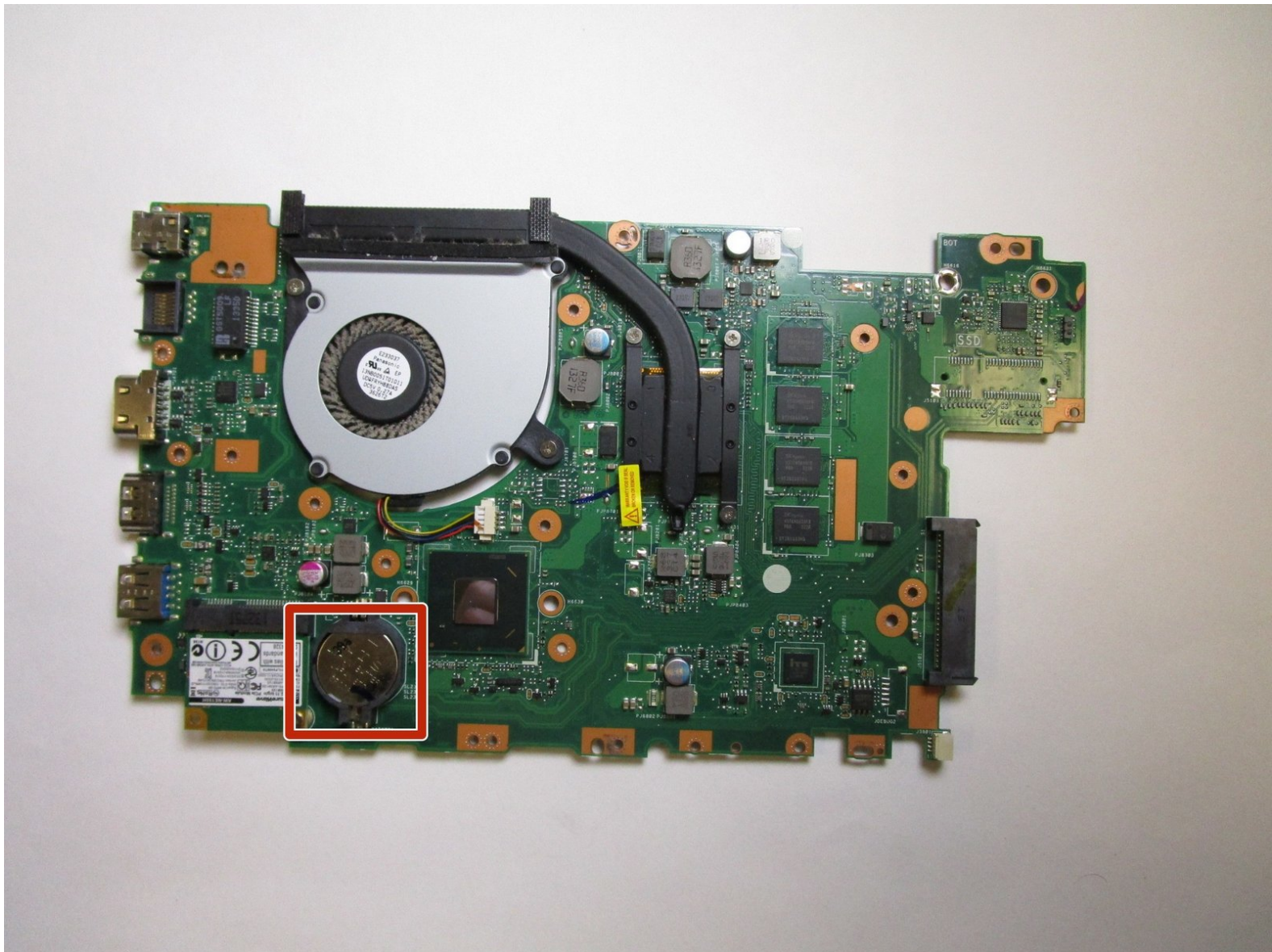




Asus X502C-RB01 CMOS Battery Replacement

This guide will detail how to replace the CMOS battery on the laptop's motherboard.

Written By: Jaspal Chauhan



INTRODUCTION

If your laptop displays errors about the clock or CMOS battery on startup, replacing the CMOS battery should help eliminate these errors.



TOOLS:

- [Phillips #0 Screwdriver](#) (1)
 - [iFixit Opening Tools](#) (1)
- Prying Tool
- [Spudger](#) (1)
-

Step 1 — Keyboard Panel



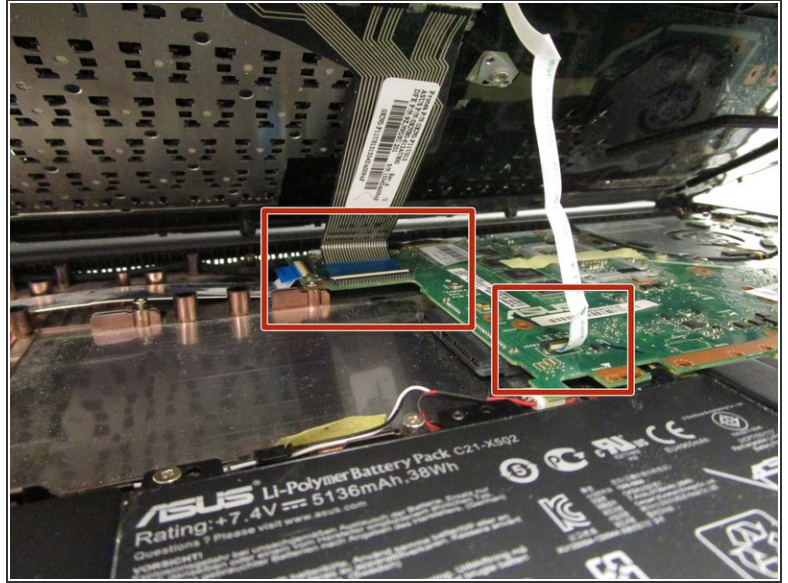
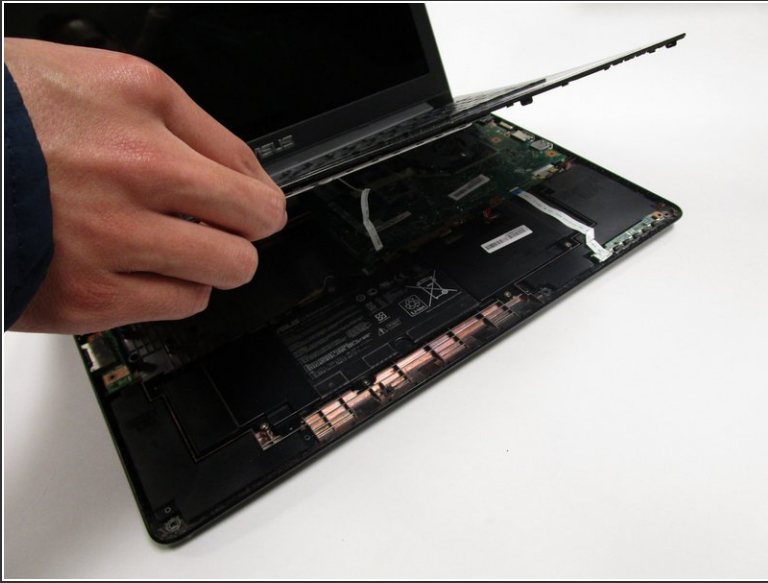
- Turn off the laptop and flip it face down.
- Using a Phillips #0 screwdriver, remove the seven 9mm screws circled in red.
- With the same screwdriver, remove the four 5mm screws circled in orange.

Step 2



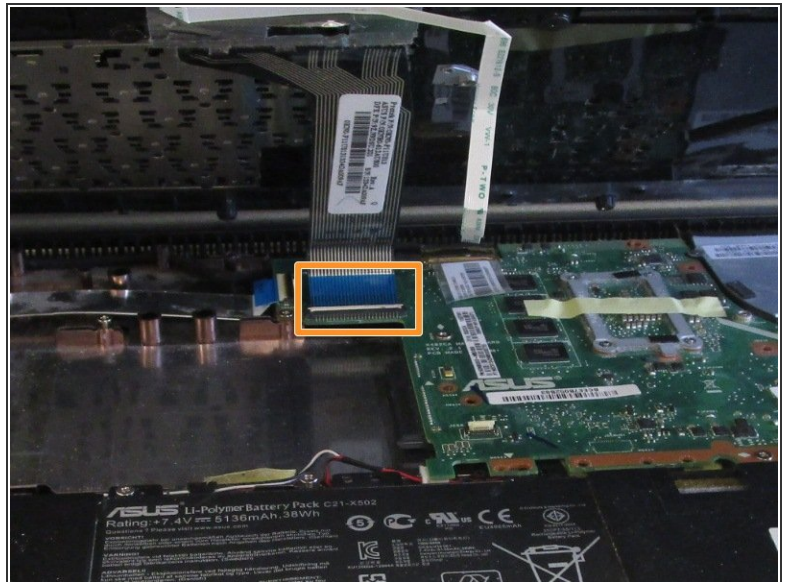
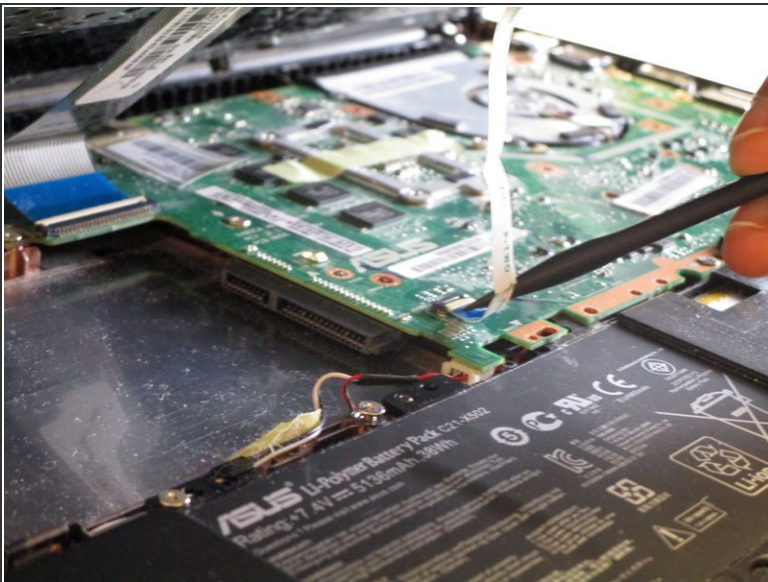
- Flip the laptop face up and open the lid.
 - Use the plastic opening tool to pry around the entire edge of the keyboard panel to loosen the panel from the base.
- ⚠ Be careful not to lift the panel just yet, as it is still connected to the motherboard.

Step 3



- Partially lift the panel up, revealing the two cables connected to the motherboard.

Step 4



- Disconnect the first ZIF cable by lifting the tab using the spudger tool or your fingernail and gently pull the cable out.
- Disconnect the second ZIF cable by lifting the tab using your fingernail and gently pull the cable out. This one is more difficult to reach with the spudger.

Step 5



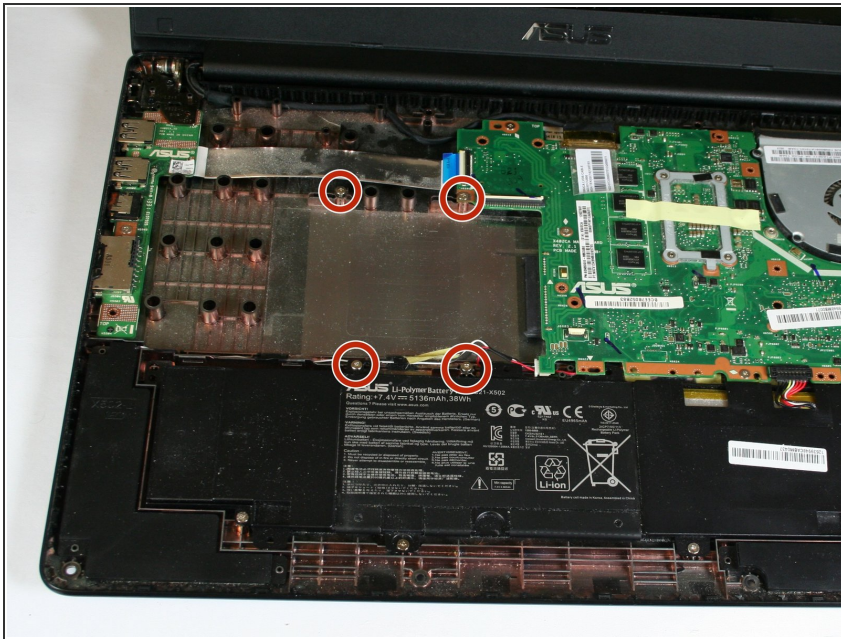
- Remove the keyboard panel completely and set it aside. The internal components of the laptop are now exposed.

Step 6 — Hard Drive



- Locate the hard drive in the area highlighted in red.
- ⓘ This demonstration model does not have a mounting bracket around the hard drive.

Step 7



- Remove the four 5mm screws from the hard drive mounting bracket using the Phillips #0 screwdriver.

Step 8



- Slide the hard drive in the direction away from the connector and lift it up to remove it.

Step 9 — Motherboard



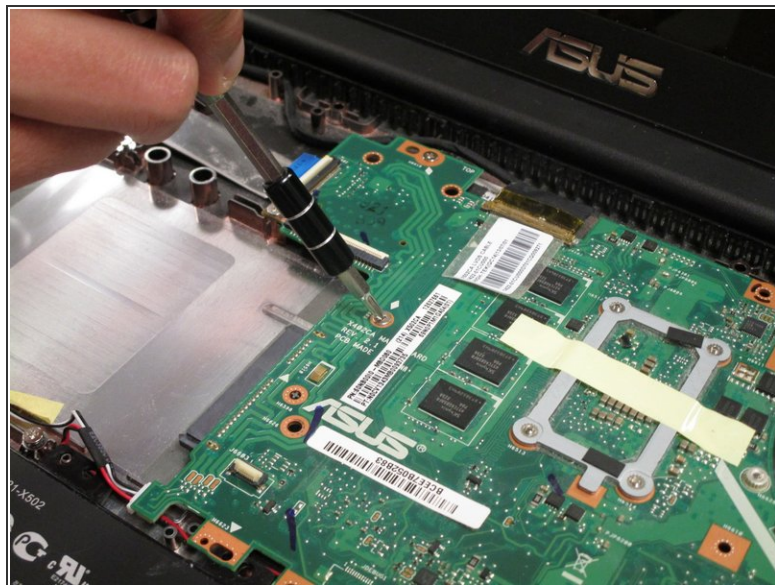
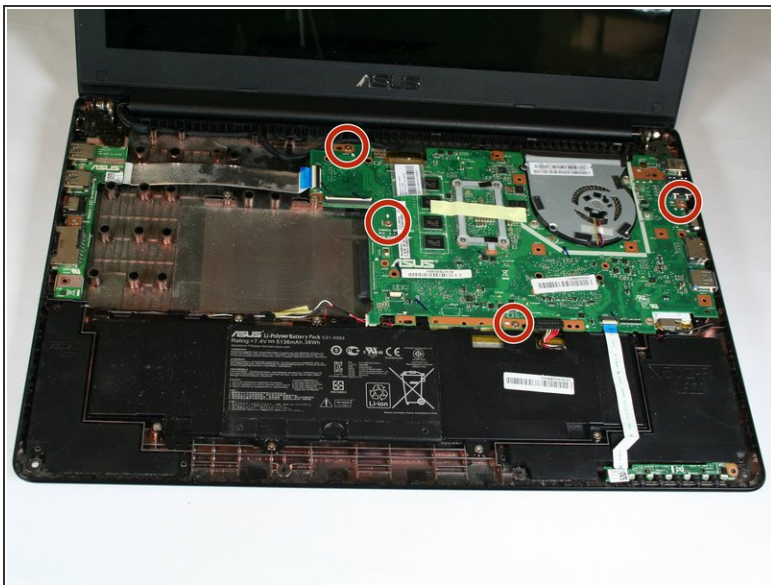
- Unplug the battery from the laptop by lifting the connector up with the flat end of the spudger.
- Unplug the two ZIF cables by lifting the tab using the spudger tool or your fingernail then pulling the cable out gently.

Step 10



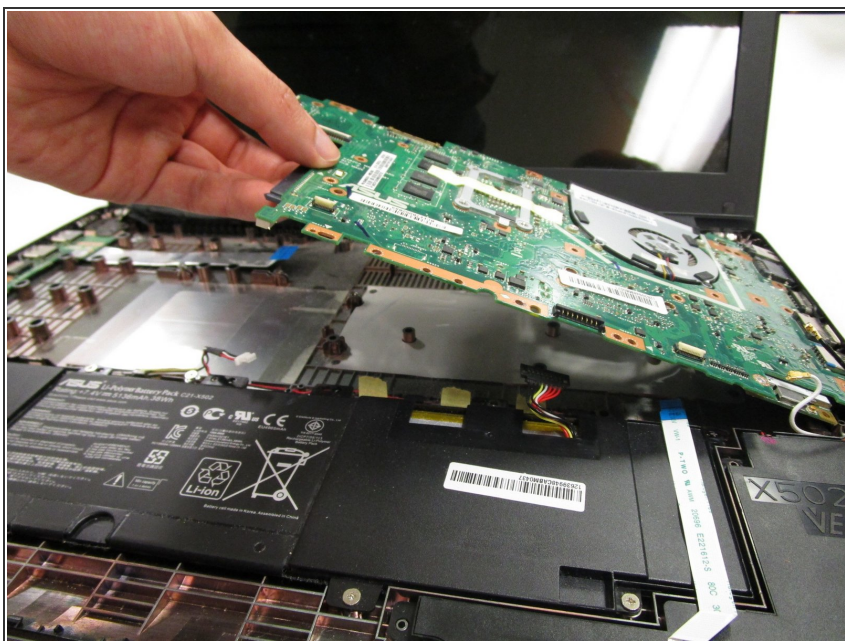
- Unplug the bundled cable by pulling it away from the connector with a bit of force.
- Unplug the display cable connector by lifting the tape and pulling it away from the connector.
- Unplug the two antenna cables connected to the network interface card by prying it off with the flat end of the spudger.

Step 11



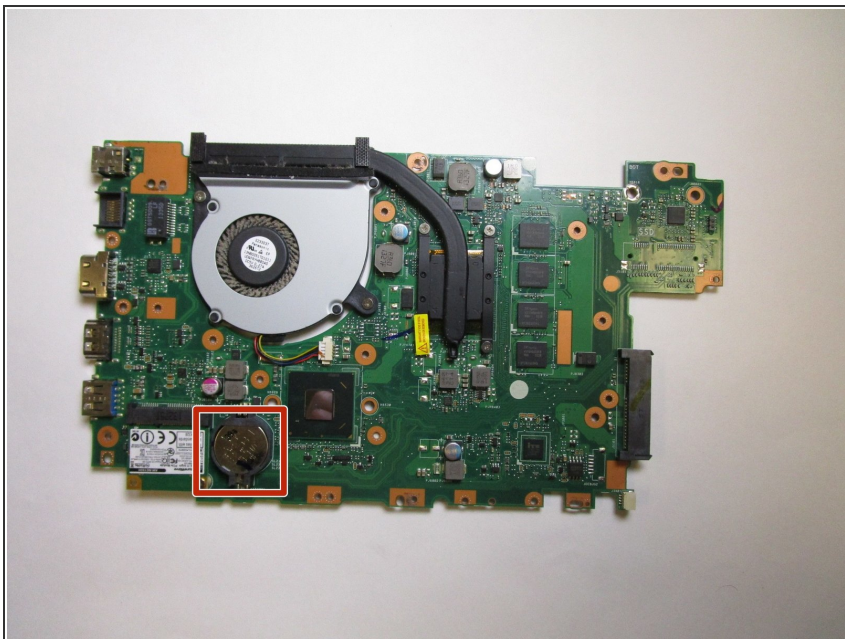
- Remove the four 5.5mm screws using the Phillips #0 screwdriver.

Step 12



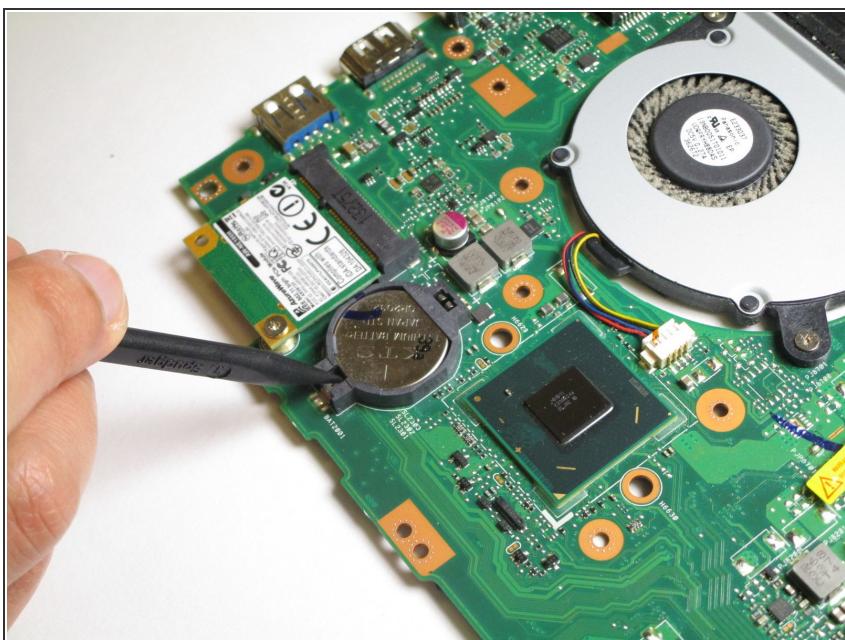
- Gently lift the motherboard out of the casing.

Step 13 — CMOS Battery



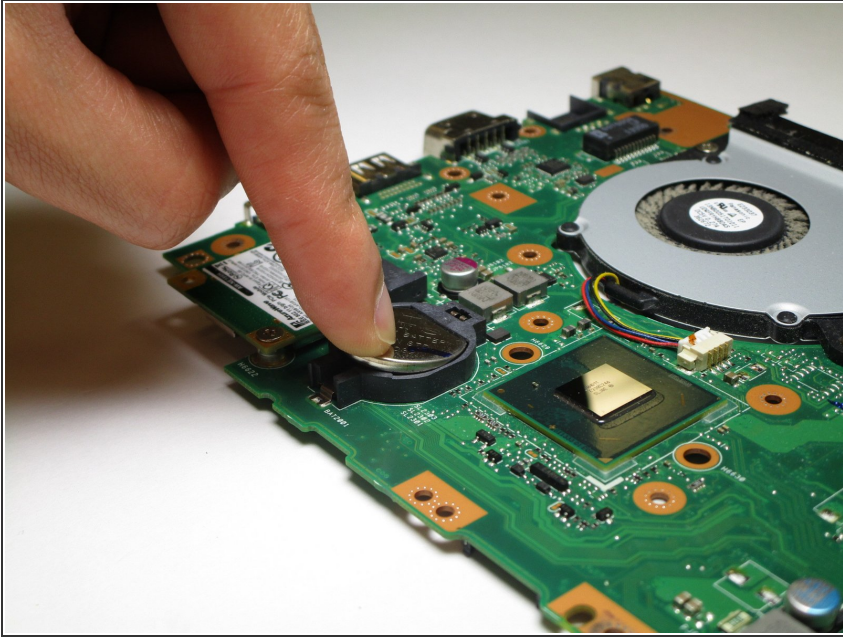
- Flip over the motherboard so that the CMOS battery is now visible.

Step 14



- Wedge the spudger tool under the CMOS battery as pictured.
- Lift up the CMOS battery. The battery should pop out easily.

Step 15



- Insert the new CMOS battery (positive side up) into the slot using your finger.

To reassemble your device, follow these instructions in reverse order.