



Asus X502C-RB01 Hard Drive Replacement

This guide will detail how to replace the internal hard drive.

Written By: Jaspal Chauhan



INTRODUCTION

If your hard drive has failed or needs to be replaced, this guide will show you how to get to the hard drive and remove it.

TOOLS:

- [Phillips #0 Screwdriver](#) (1)
- [iFixit Opening Tools](#) (1)

Prying Tool

- [Spudger](#) (1)
-

Step 1 — Keyboard Panel



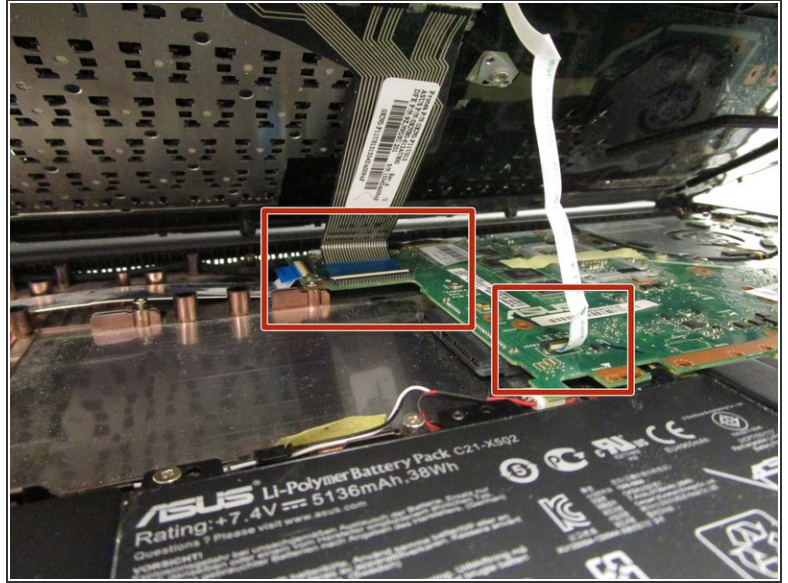
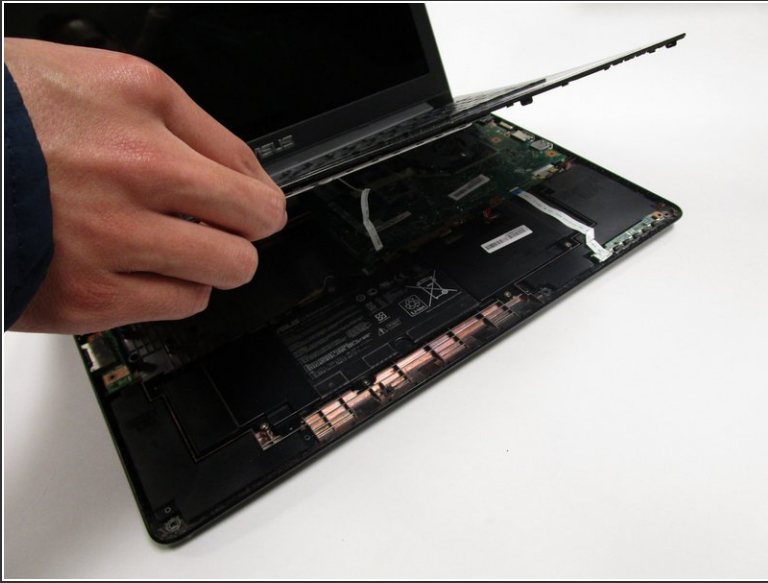
- Turn off the laptop and flip it face down.
- Using a Phillips #0 screwdriver, remove the seven 9mm screws circled in red.
- With the same screwdriver, remove the four 5mm screws circled in orange.

Step 2



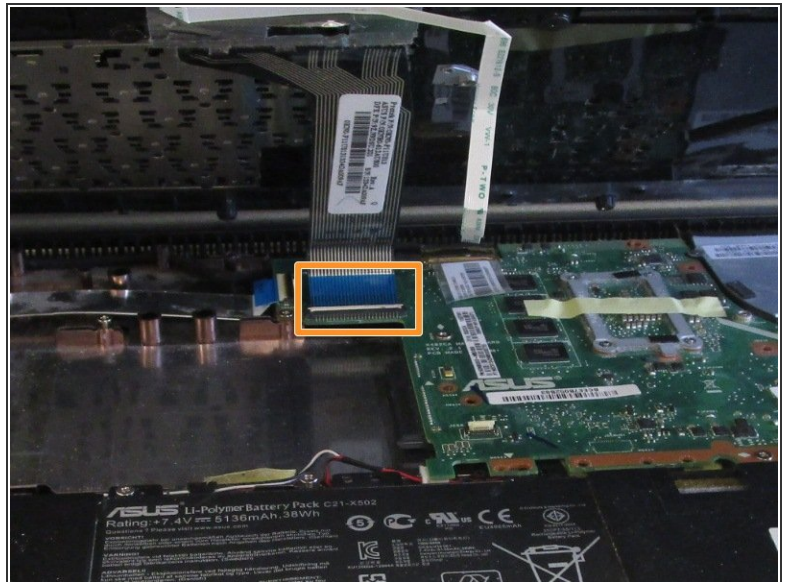
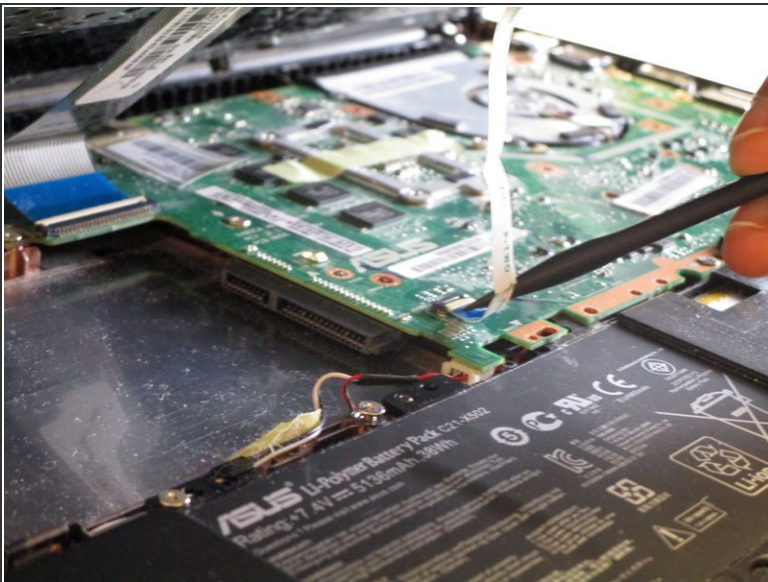
- Flip the laptop face up and open the lid.
 - Use the plastic opening tool to pry around the entire edge of the keyboard panel to loosen the panel from the base.
- ⚠ Be careful not to lift the panel just yet, as it is still connected to the motherboard.

Step 3



- Partially lift the panel up, revealing the two cables connected to the motherboard.

Step 4



- Disconnect the first ZIF cable by lifting the tab using the spudger tool or your fingernail and gently pull the cable out.
- Disconnect the second ZIF cable by lifting the tab using your fingernail and gently pull the cable out. This one is more difficult to reach with the spudger.

Step 5



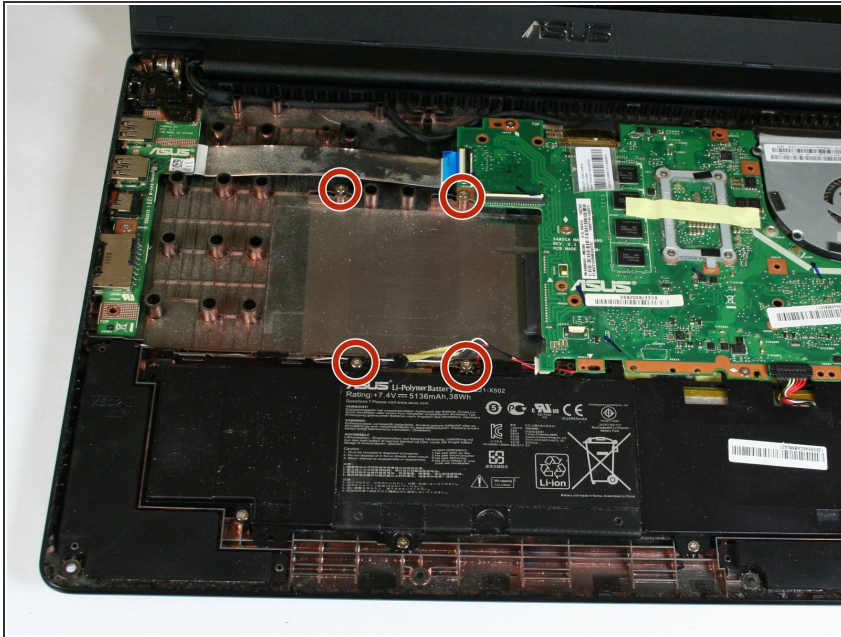
- Remove the keyboard panel completely and set it aside. The internal components of the laptop are now exposed.

Step 6 — Hard Drive



- Locate the hard drive in the area highlighted in red.
- ⓘ This demonstration model does not have a mounting bracket around the hard drive.

Step 7



- Remove the four 5mm screws from the hard drive mounting bracket using the Phillips #0 screwdriver.

Step 8



- Slide the hard drive in the direction away from the connector and lift it up to remove it.

To reassemble your device, follow these instructions in reverse order.