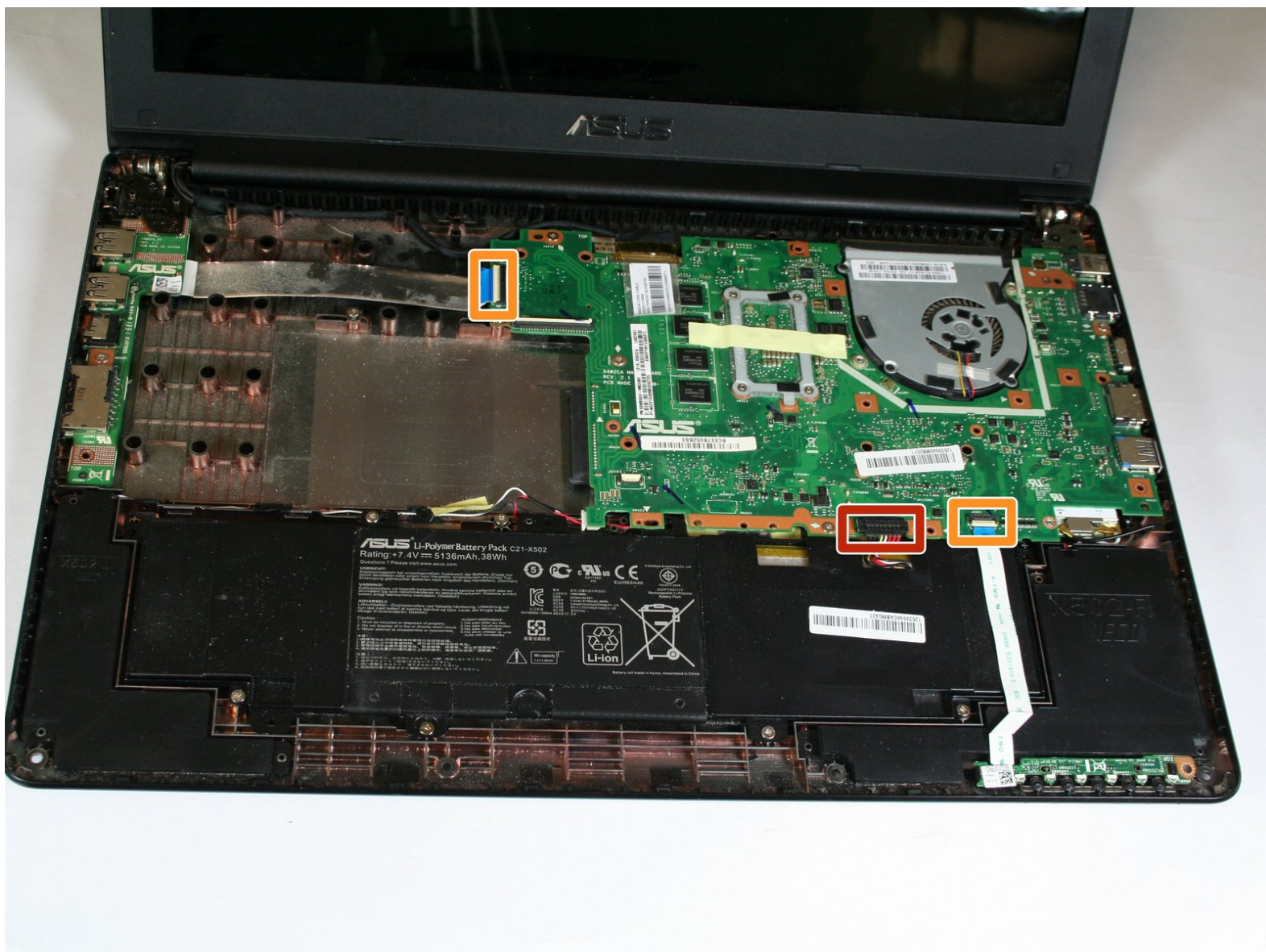




Asus X502C-RB01 Motherboard Replacement

This guide will detail how to replace the laptop's motherboard.

Written By: Jaspal Chauhan



INTRODUCTION

If your motherboard needs to be replaced or repaired, or need to get into other parts of the laptop, this guide will show you how to dismantle the motherboard.

TOOLS:

- [iFixit Opening Tools](#) (1)
 - [Phillips #0 Screwdriver](#) (1)
 - [Spudger](#) (1)
-

Step 1 — Keyboard Panel



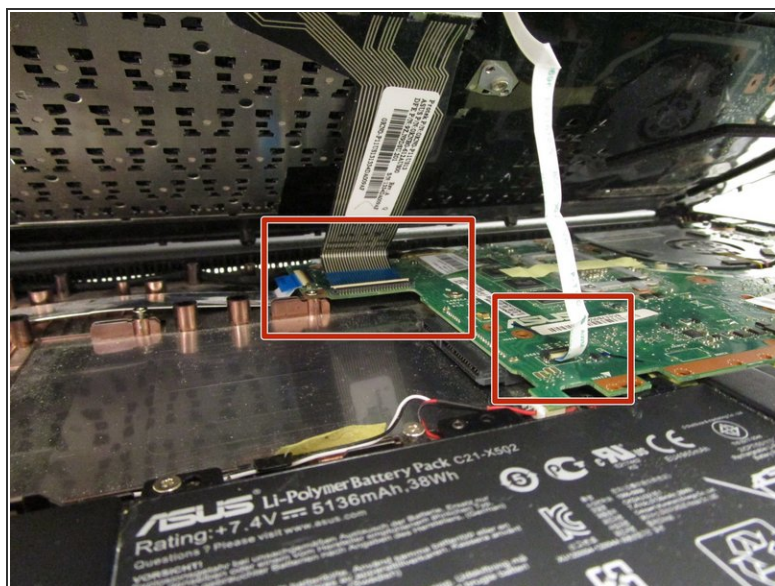
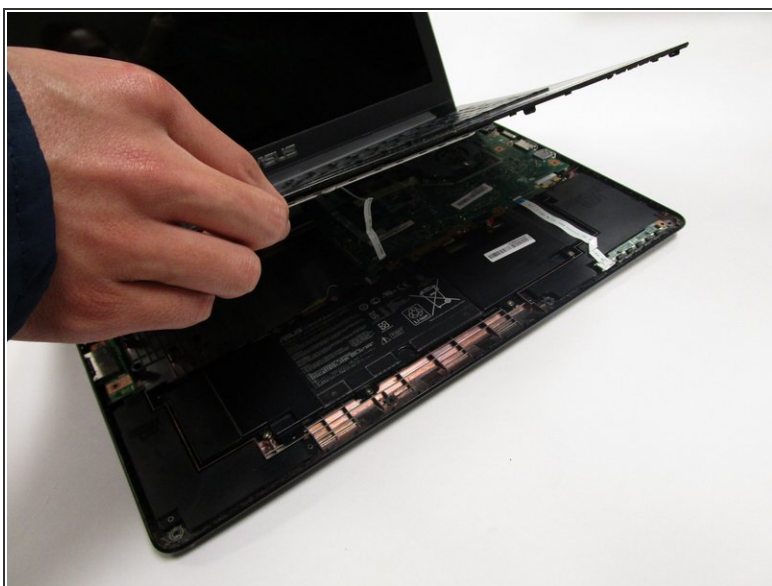
- Turn off the laptop and flip it face down.
- Using a Phillips #0 screwdriver, remove the seven 9mm screws circled in red.
- With the same screwdriver, remove the four 5mm screws circled in orange.

Step 2



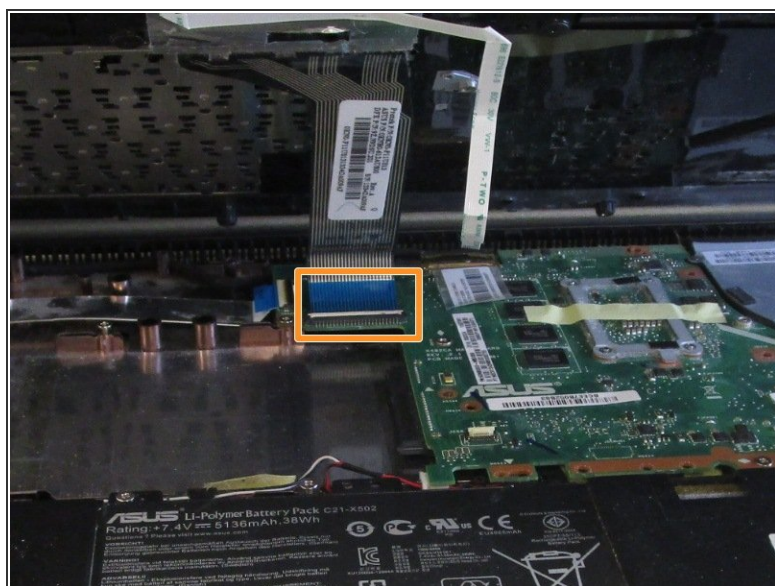
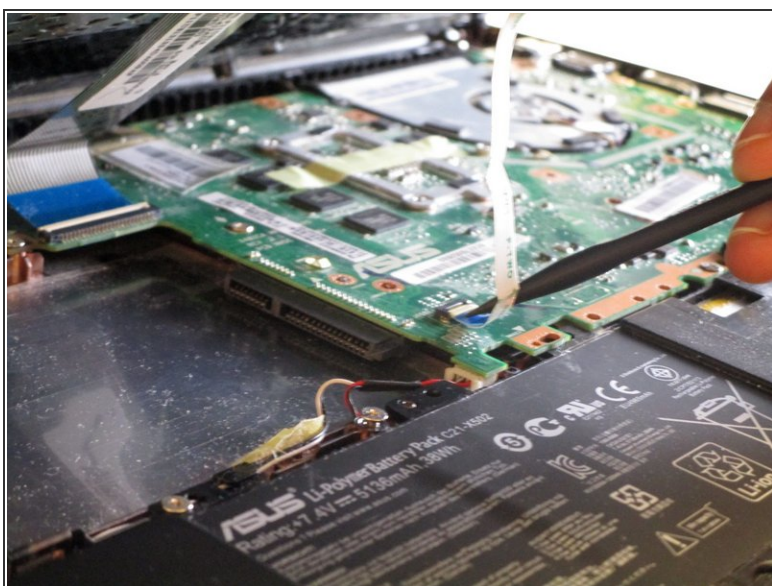
- Flip the laptop face up and open the lid.
 - Use the plastic opening tool to pry around the entire edge of the keyboard panel to loosen the panel from the base.
- ⚠ Be careful not to lift the panel just yet, as it is still connected to the motherboard.

Step 3



- Partially lift the panel up, revealing the two cables connected to the motherboard.

Step 4



- Disconnect the first ZIF cable by lifting the tab using the spudger tool or your fingernail and gently pull the cable out.
- Disconnect the second ZIF cable by lifting the tab using your fingernail and gently pull the cable out. This one is more difficult to reach with the spudger.

Step 5



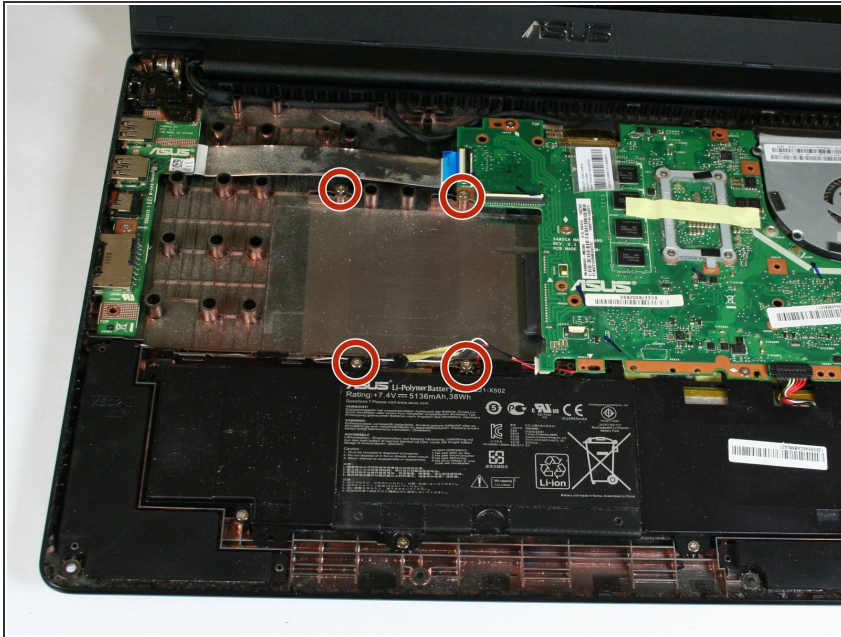
- Remove the keyboard panel completely and set it aside. The internal components of the laptop are now exposed.

Step 6 — Hard Drive



- Locate the hard drive in the area highlighted in red.
- ⓘ This demonstration model does not have a mounting bracket around the hard drive.

Step 7



- Remove the four 5mm screws from the hard drive mounting bracket using the Phillips #0 screwdriver.

Step 8



- Slide the hard drive in the direction away from the connector and lift it up to remove it.

Step 9 — Motherboard



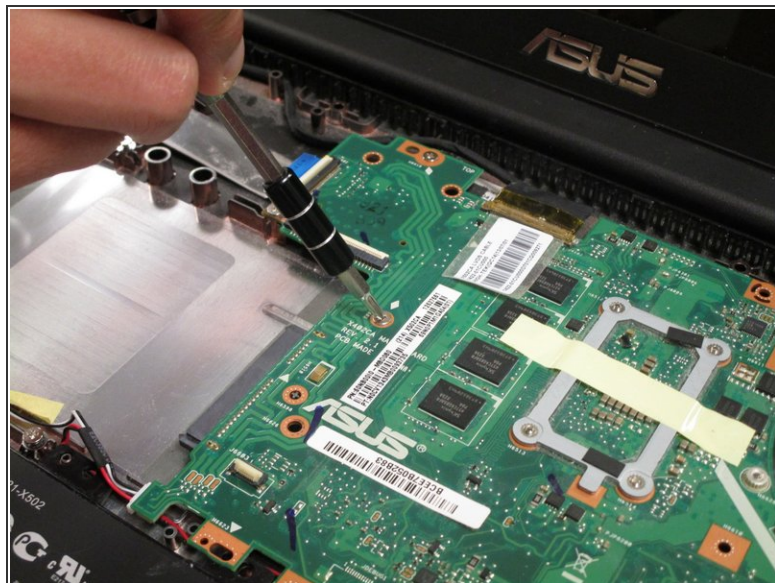
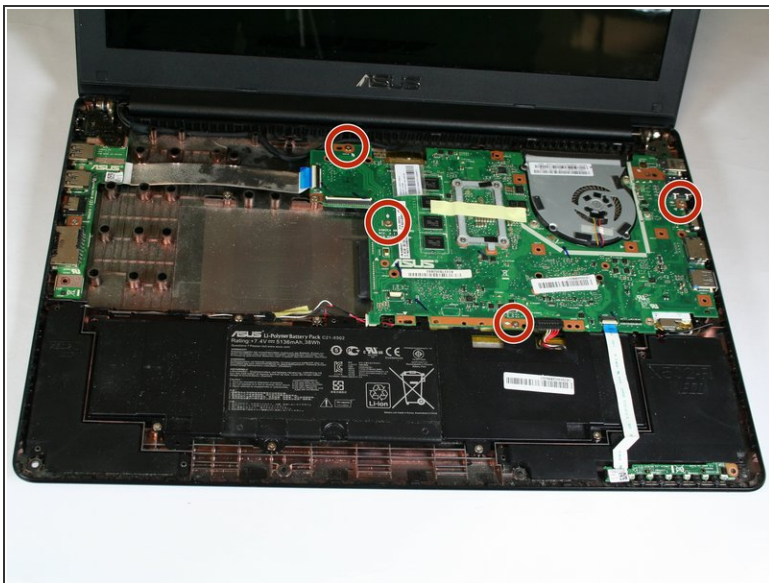
- Unplug the battery from the laptop by lifting the connector up with the flat end of the spudger.
- Unplug the two ZIF cables by lifting the tab using the spudger tool or your fingernail then pulling the cable out gently.

Step 10



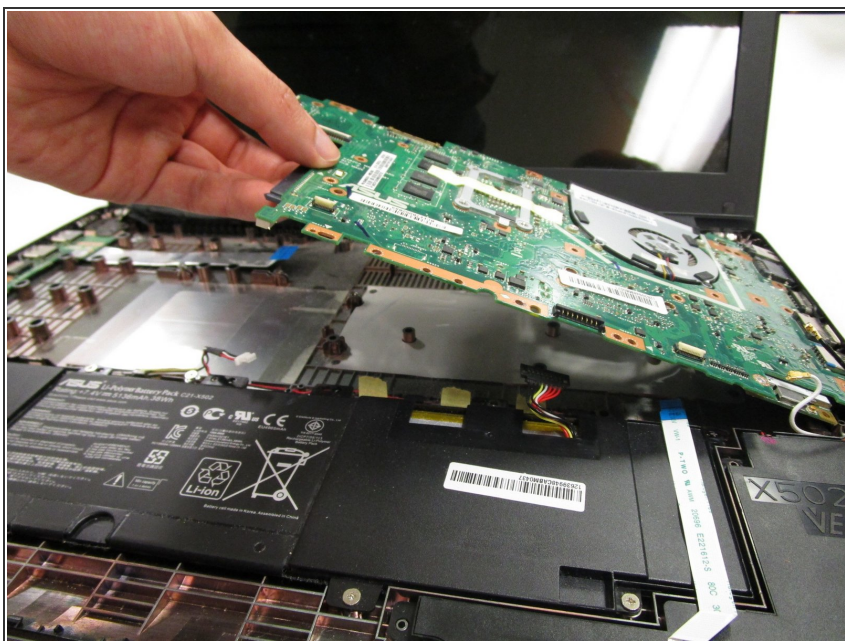
- Unplug the bundled cable by pulling it away from the connector with a bit of force.
- Unplug the display cable connector by lifting the tape and pulling it away from the connector.
- Unplug the two antenna cables connected to the network interface card by prying it off with the flat end of the spudger.

Step 11



- Remove the four 5.5mm screws using the Phillips #0 screwdriver.

Step 12



- Gently lift the motherboard out of the casing.

To reassemble your device, follow these instructions in reverse order.