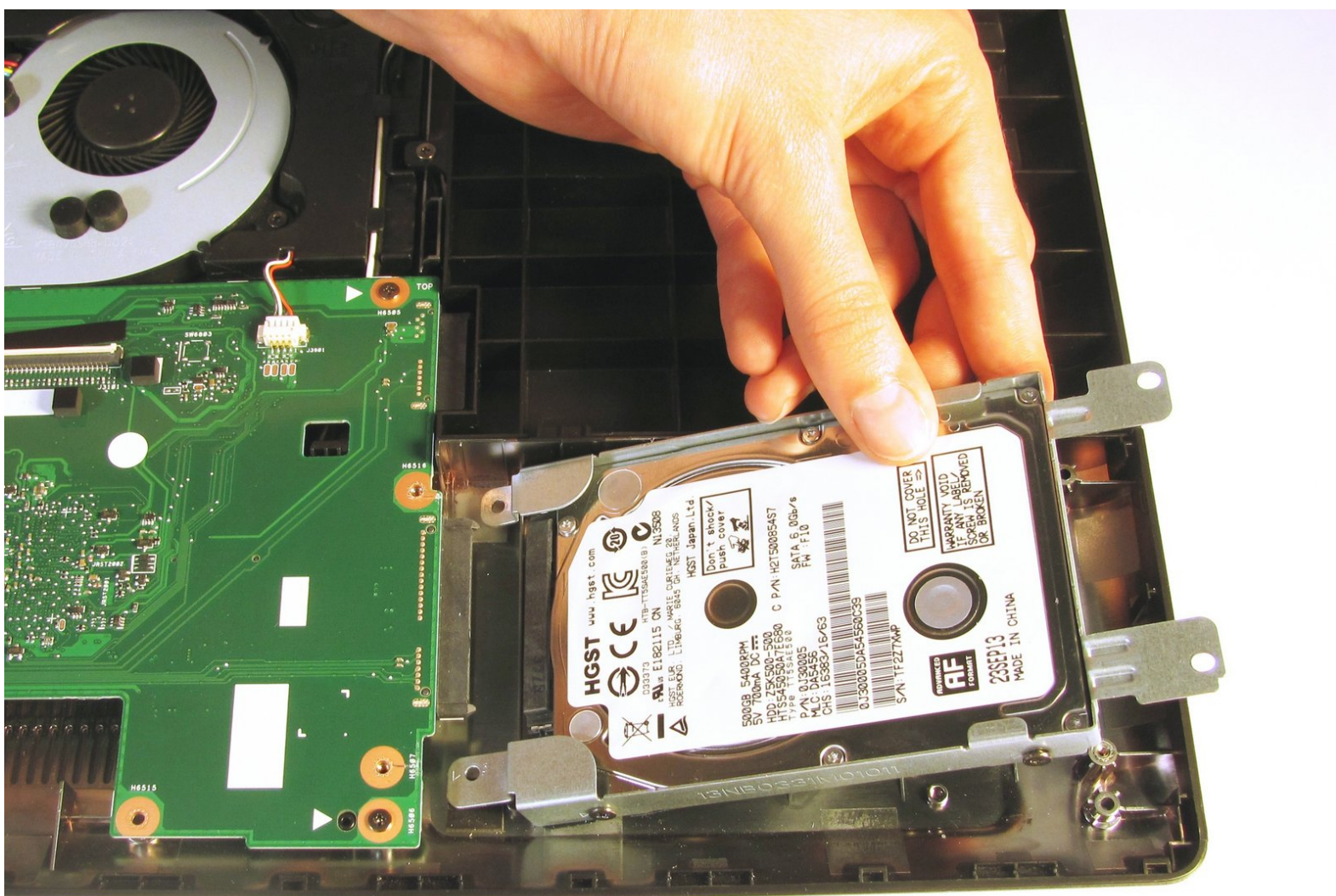




# Asus X551CA Hard Drive Replacement

This guide will show you how to replace a broken or damaged hard drive in the Asus X551CA laptop.

Written By: Brandon



## INTRODUCTION

The hard drive is where a computer permanently stores information, making it very important. A broken or damaged hard drive must be replaced to restore proper functioning.



### TOOLS:

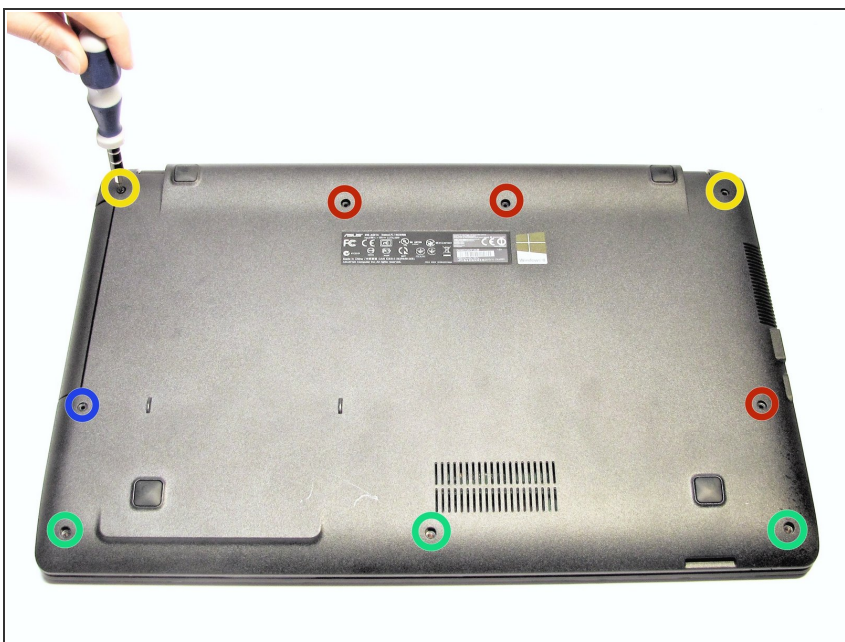
- [iFixit Opening Tools](#) (1)
- [Phillips #0 Screwdriver](#) (1)




### PARTS:

- [1 TB SSD / Upgrade Bundle](#) (1)
- [250 GB SSD / Upgrade Bundle](#) (1)
- [500 GB SSD / Upgrade Bundle](#) (1)
- [2 TB SSD / Upgrade Bundle](#) (1)

## Step 1 — Keyboard Plate Cover



 Power off and unplug your laptop before you begin.

- Turn the laptop upside-down and remove the following screws using a Phillips #0 driver:
  - Two 9.5 mm screws in the middle of the back edge, and one 9.5 mm screw in the right edge
  - Two 4.3 mm screws in the back corners
  - One 17.5 mm screw at the left edge near the optical drive
  - Three 4.3 mm screws in the front edge

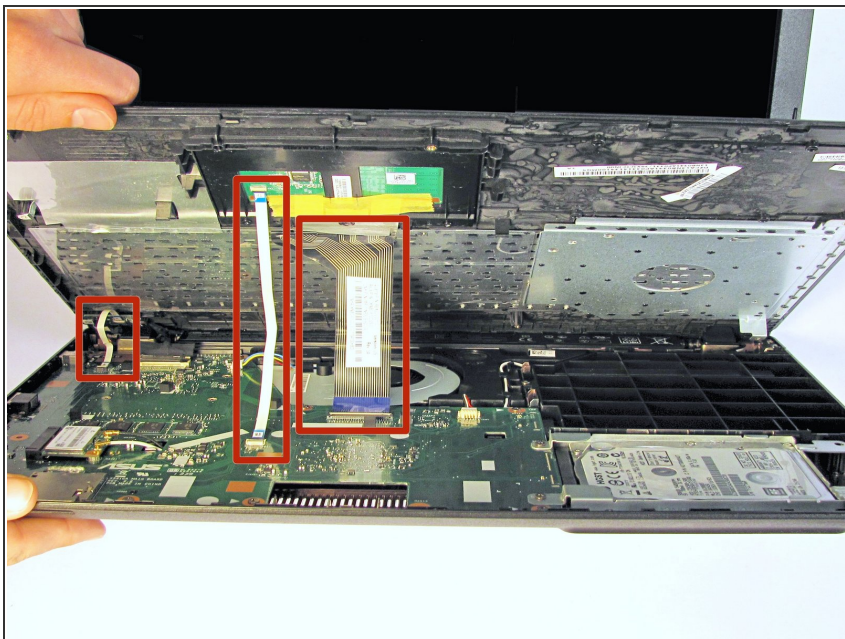
## Step 2



- Use the plastic opening tool to separate the keyboard plate cover from the bottom cover. In order to do this, insert the plastic opening tool in between the keyboard plate cover and the bottom cover, then slide along edges to pry open.

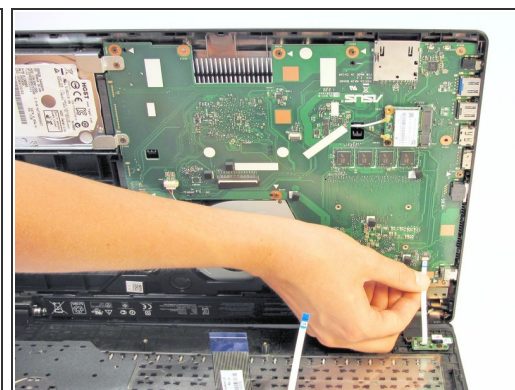
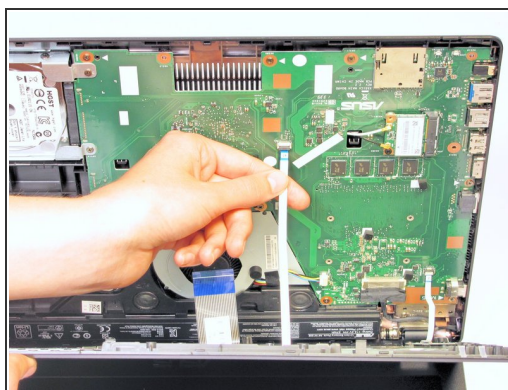
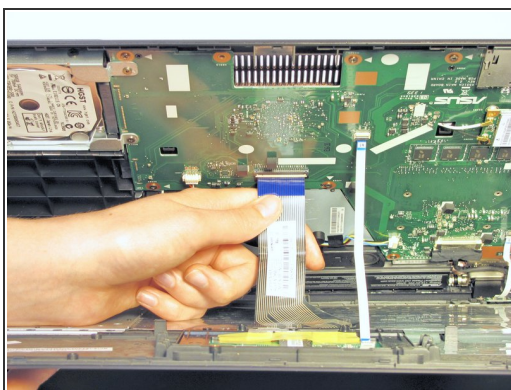


### Step 3



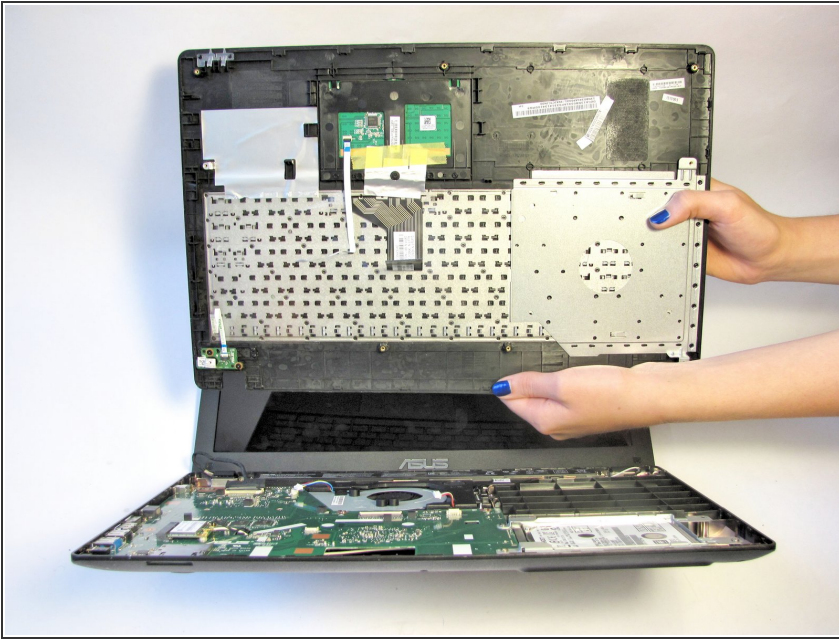
- Locate the three ribbons connecting the keyboard plate cover to the bottom cover.

### Step 4



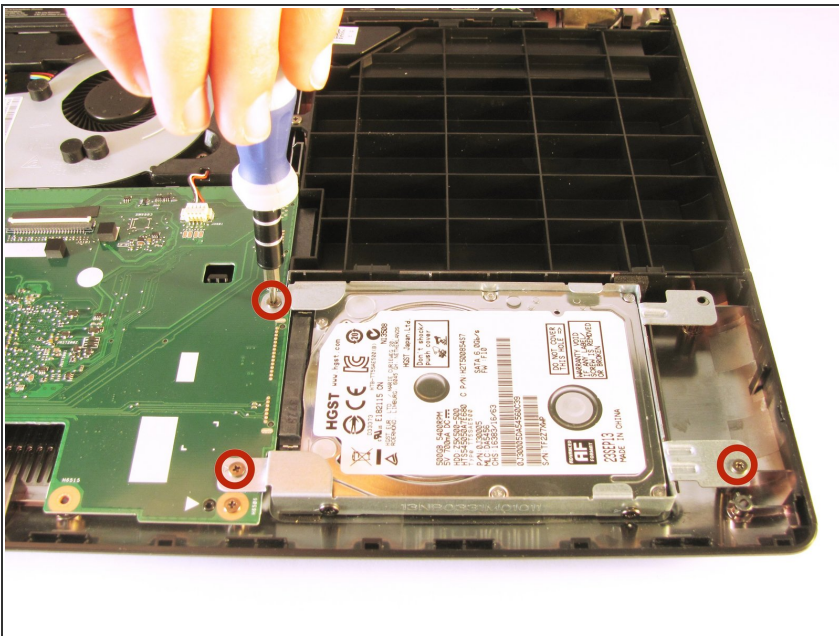
- Invert the laptop in order to gain access to the ribbons.
- Remove each ribbon by flipping the small white plastic flap up and gently pulling on the ribbon.

## Step 5



- Now that the ribbons have been detached from the bottom cover, carefully remove the keyboard plate cover. Once it has been removed, place it in a safe and moisture free area so it does not get damaged.

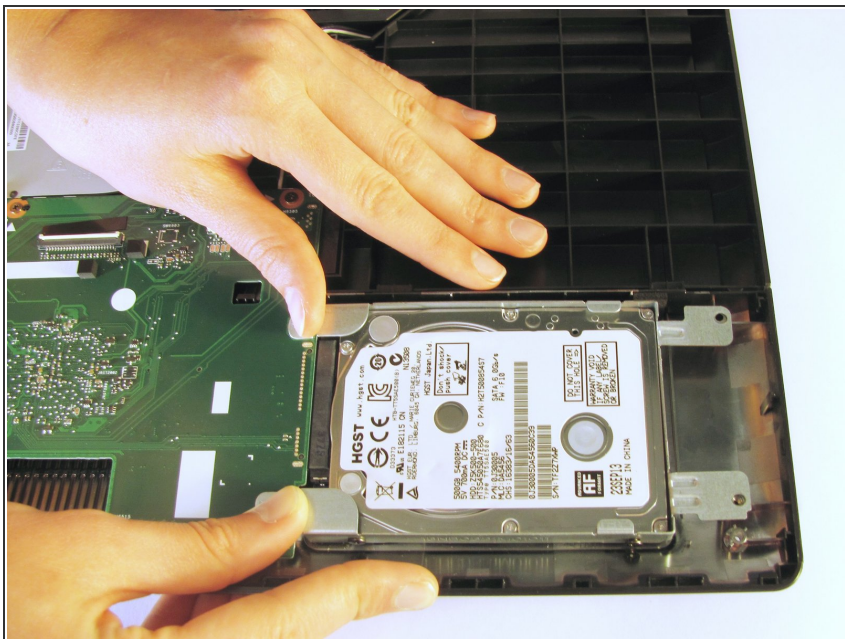
## Step 6 — Hard Drive



- Unscrew the three 5.5 mm Phillips #0 screws with the Phillips #0 Screwdriver.

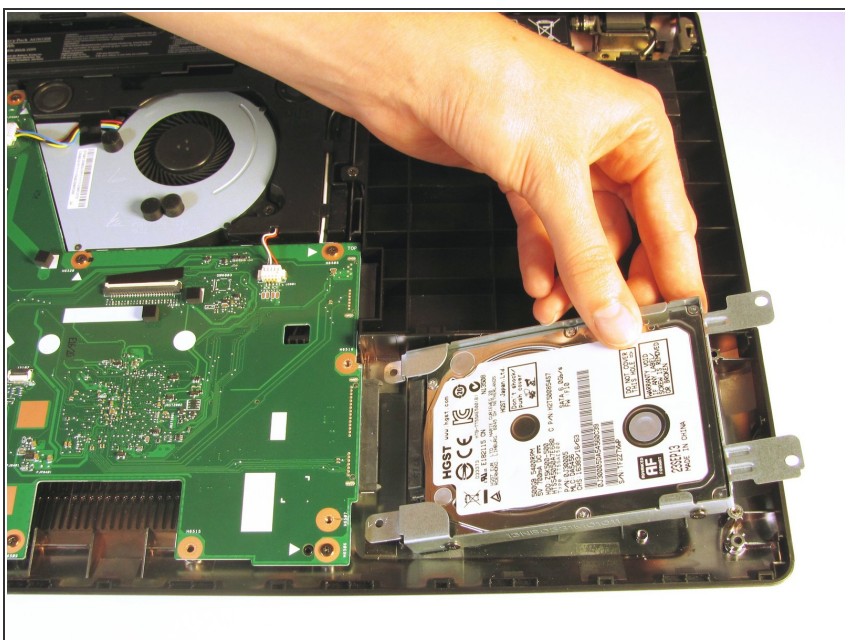


## Step 7



- Once the screws have been removed, place your fingers on the left corners and push the hard drive towards the right edge of the laptop (relative to the picture).

## Step 8



- Once it is free, remove the hard drive from its internal cavity.

To reassemble your device, follow these instructions in reverse order.