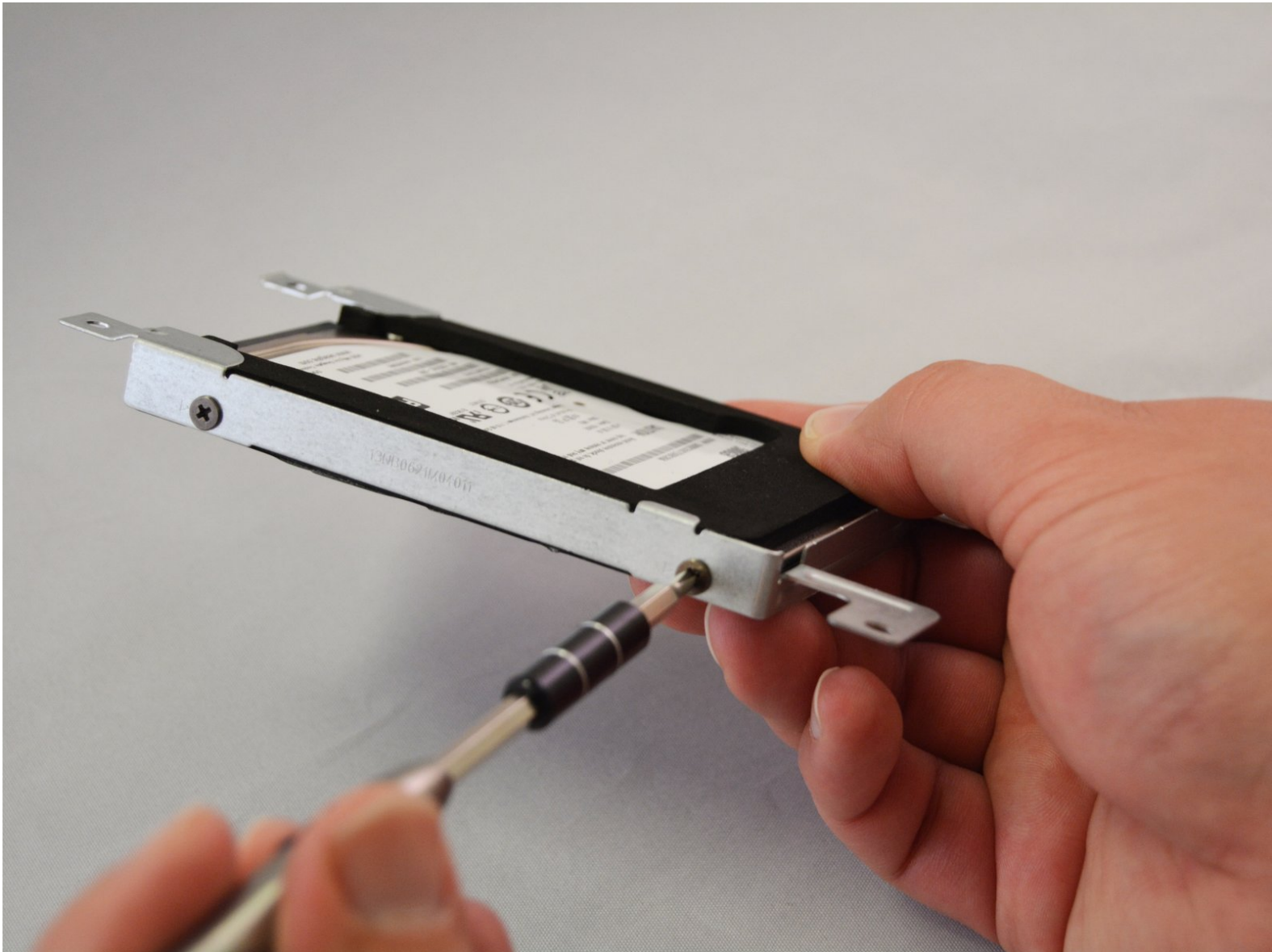




Asus X555LA-SI305041 Hard Drive Replacement

Replace your laptop's hard drive.

Written By: Tyler Stevenson



INTRODUCTION

If your computer is starting to slow down, freeze frequently, or display the blue screen of death then your hard drive may be failing. If your hard drive hasn't completely crashed yet then be sure to backup your precious data BEFORE replacing your hard drive.



TOOLS:

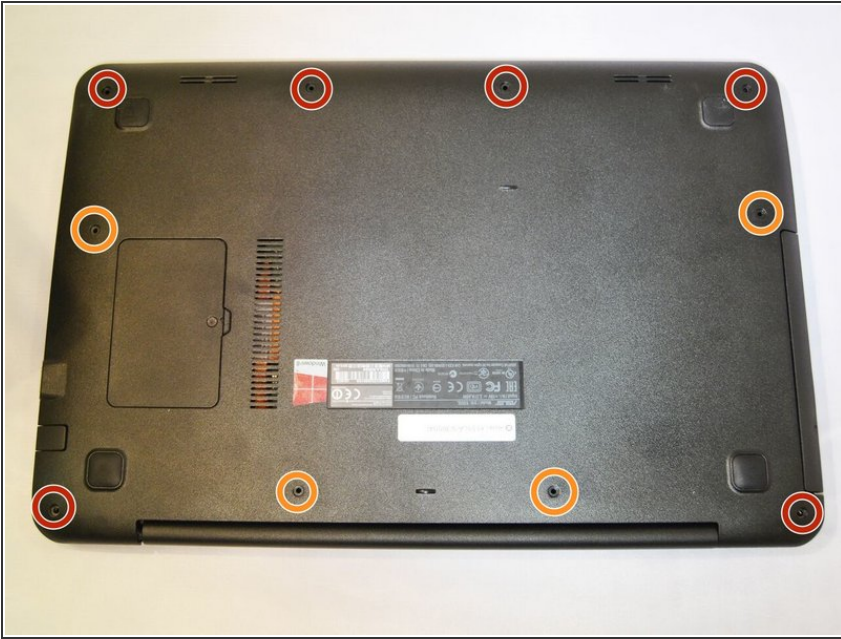
- [iFixit Opening Tools](#) (1)
- [Phillips #0 Screwdriver](#) (1)



PARTS:

- [1 TB SSD / Upgrade Bundle](#) (1)
- [250 GB SSD / Upgrade Bundle](#) (1)
- [500 GB SSD / Upgrade Bundle](#) (1)
- [2 TB SSD / Upgrade Bundle](#) (1)

Step 1 — Keyboard Assembly



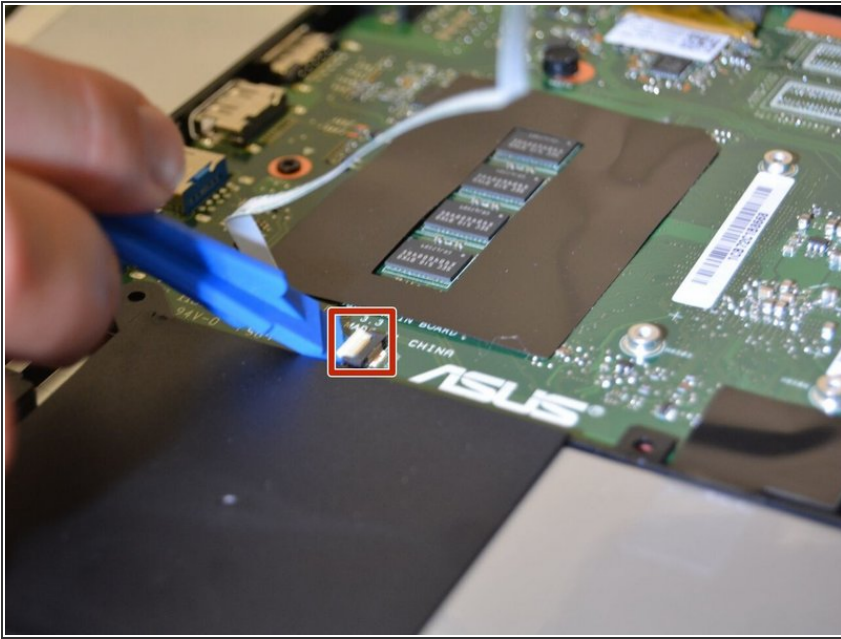
- Remove the following Phillips #0 screws from the lower case:
 - Six 9 mm screws
 - Four 11 mm screws

Step 2



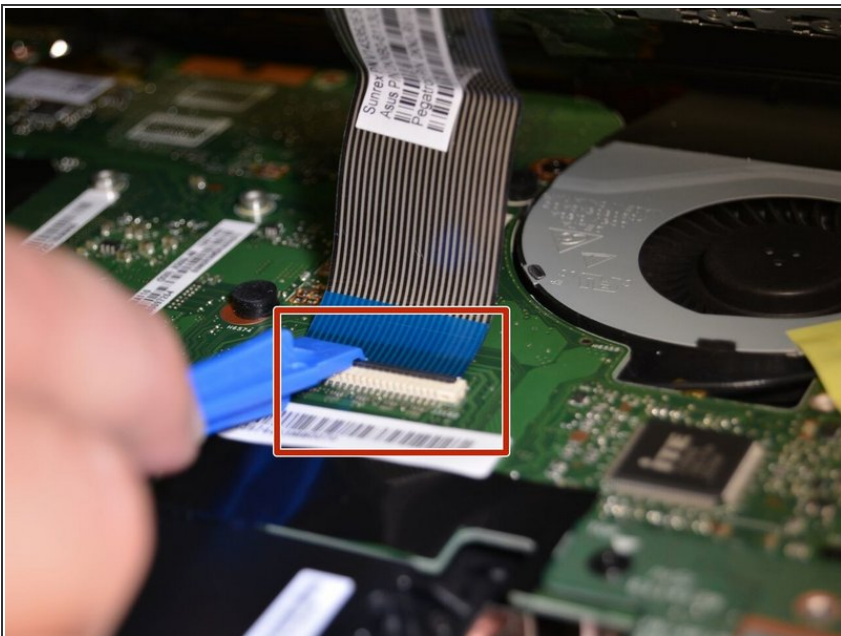
- Use the plastic opening tool to separate the top cover from the laptop.
 - Start by prying on the front of the laptop.
 - Continue prying around the cover and end just under the screen to release the front cover.
- ⚠ Do not fully remove the top cover, it is attached by two ribbon cables that will be disconnected in the following steps.

Step 3



- To release the ZIF latch, flip up the small white tab.
- Pull the white ribbon cable out of the socket to disconnect it.

Step 4



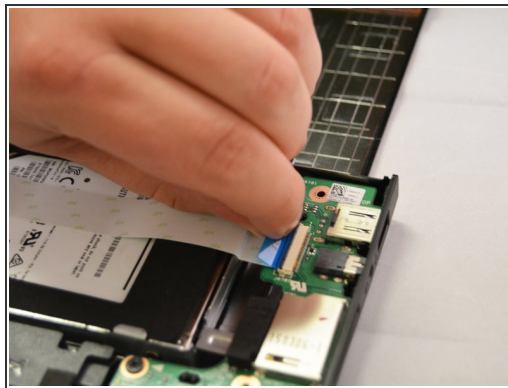
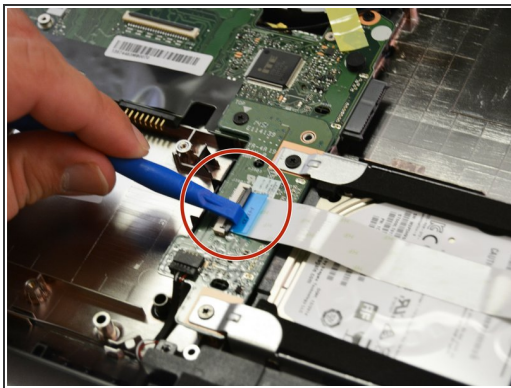
- To release the ZIF latch on the keyboard cable, flip the gray tab up.
- Gently pull the black and blue ribbon cable out of its connector.

Step 5



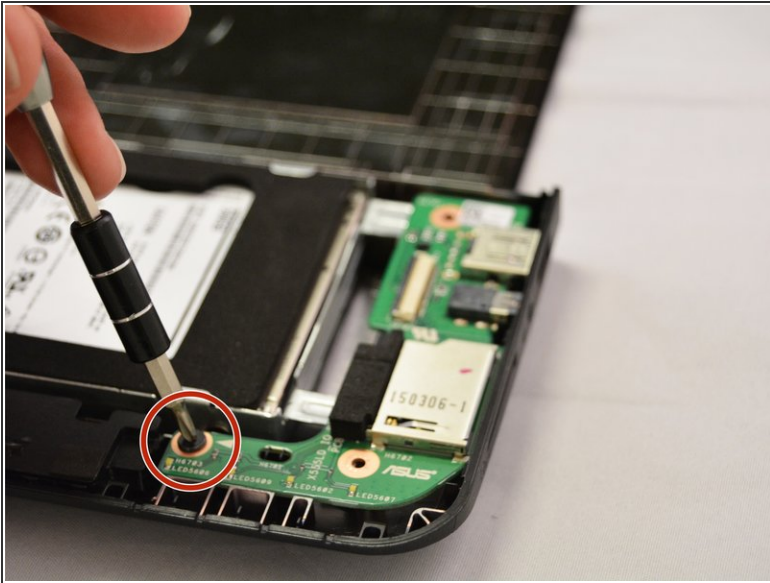
- You can now fully remove the keyboard and front panel to gain access to the inside of the laptop.

Step 6 — Hard Drive



- Release the ribbon cables using the plastic opening tool to flip the gray tab on the white connector.
- Gently slide ribbon cable out while gray tab is flipped up.
- If glued, go ahead and peel ribbon from hard drive.

Step 7



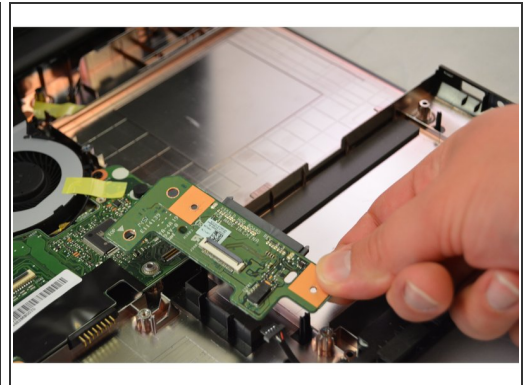
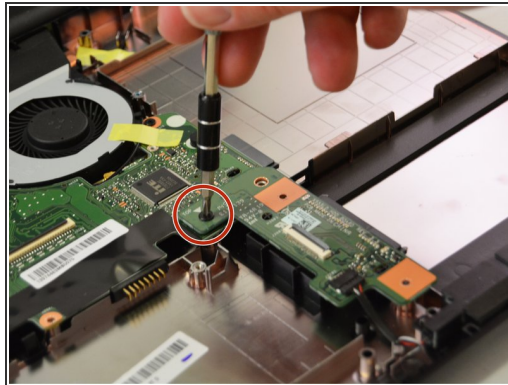
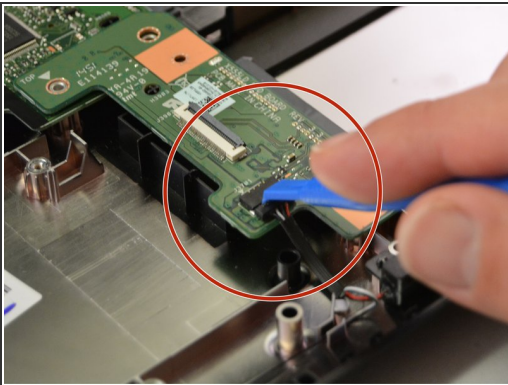
- Unscrew the one black 5mm screw from USB and headphone port using a #0 Phillips screw driver.
- Remove USB and headphone port using the plastic opening tool.

Step 8



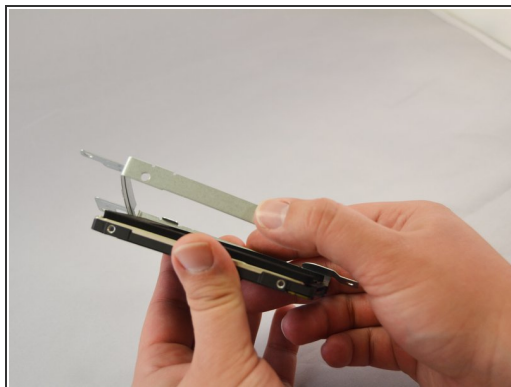
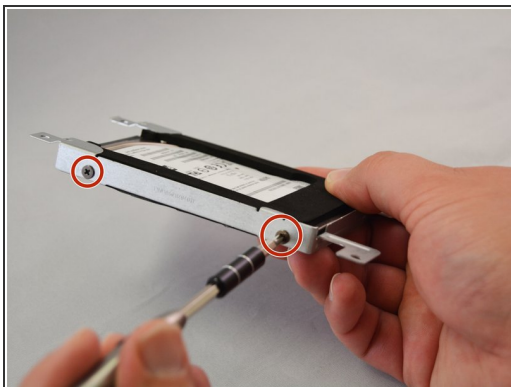
- Unscrew the two black 5mm screws located in each corner of the hard drive using a #0 Phillips screw driver.
- Lift hard drive out of device.

Step 9



- Disconnect power connector with a plastic opening tool.
- Unscrew one black 5mm screw from hard drive controller PCB using a #0 Phillips screwdriver.
- Remove hard drive controller.

Step 10



- Unscrew the four black 3mm screws from hard drive enclosure using a #0 Phillips screwdriver.
- Remove case from hard drive.
- Peel the three foam contact strips up slowly to ensure foam doesn't tear.

To reassemble your device, follow these instructions in reverse order.