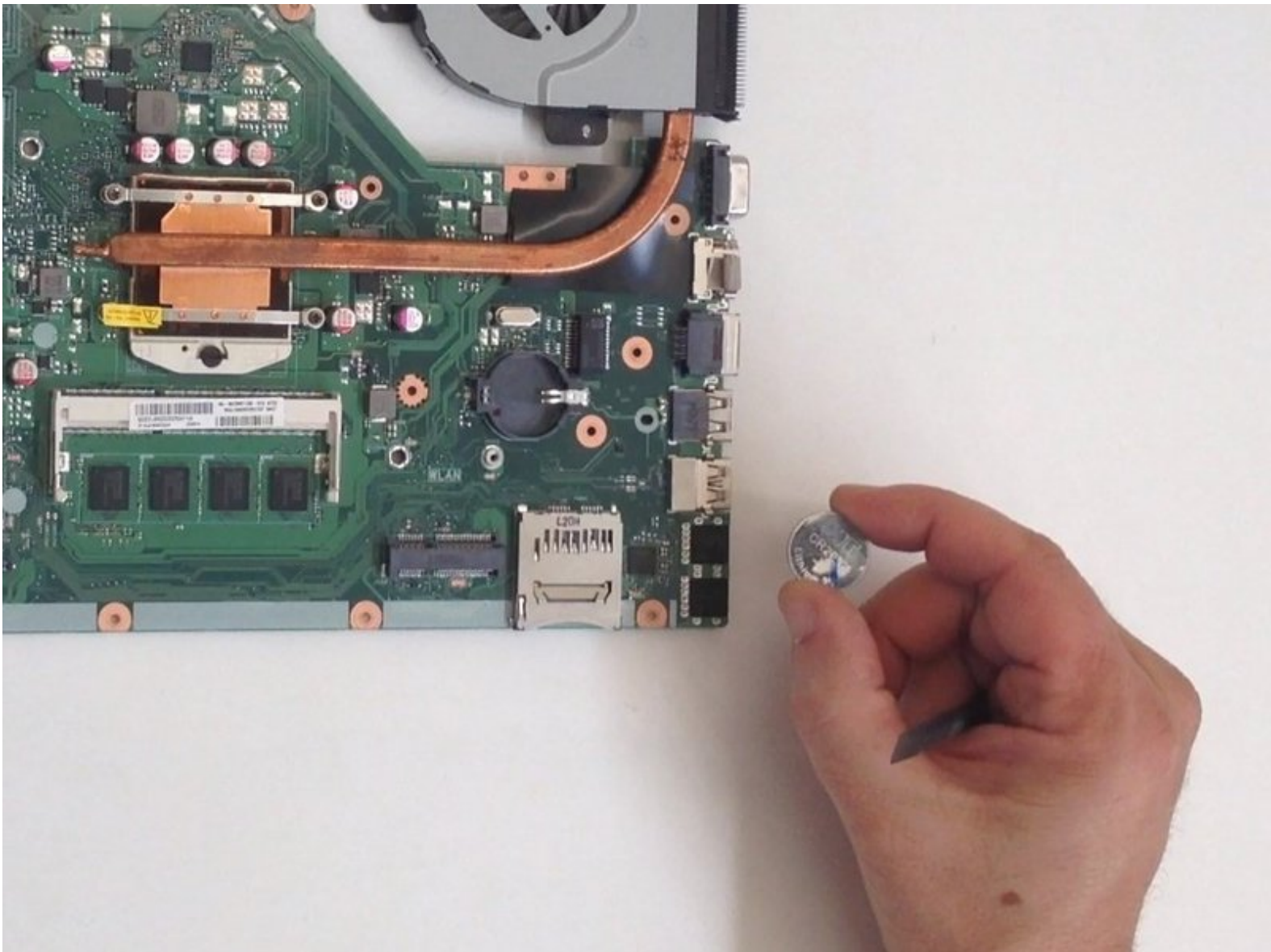




Asus X55C CMOS / BIOS Battery Replacement

Asus X55C CMOS / BIOS Battery Replacement

Written By: ZFix



INTRODUCTION

How to disassemble the laptop and replace the CMOS / BIOS Battery.

_____ Video manual: _____

[video: <http://youtu.be/zRjcZQ59SSY>]



TOOLS:

- [Tweezers](#) (1)
- [Utility Knife](#) (1)
- [Phillips #0 Screwdriver](#) (1)
- [iFixit Opening Tools](#) (1)



PARTS:

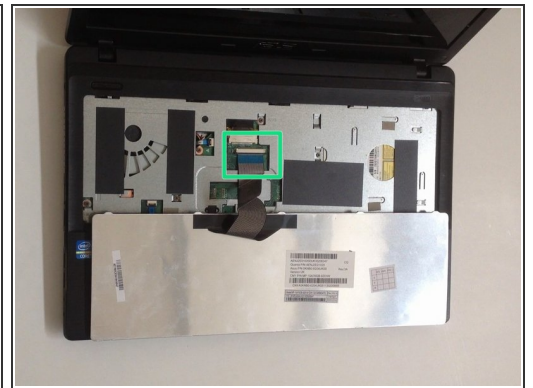
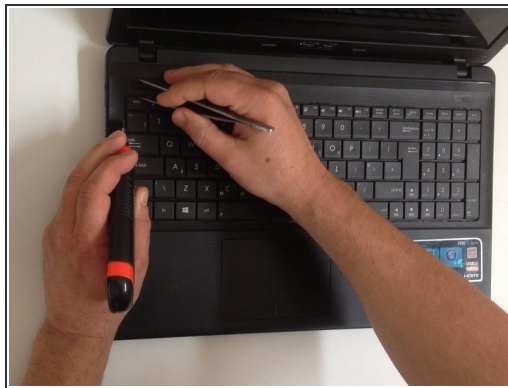
- [CR2032 Lithium Battery](#) (1)

Step 1 — Keyboard



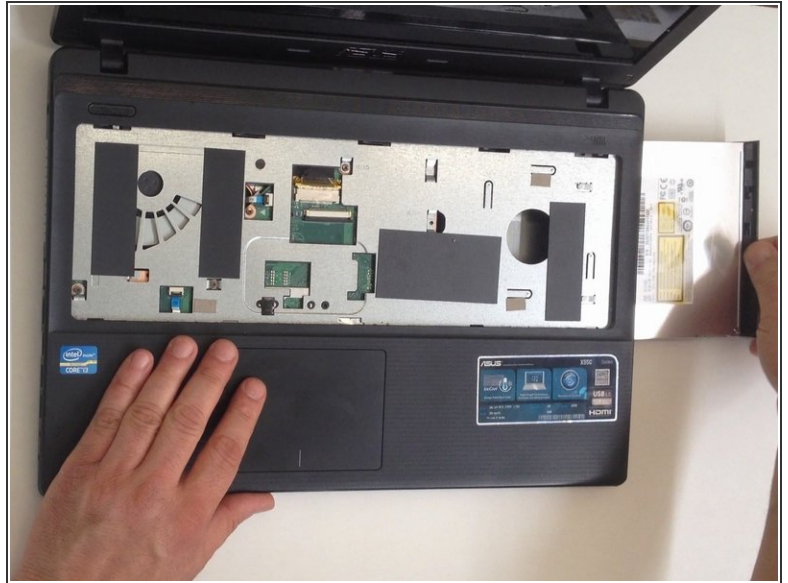
- Switch off the laptop and remove the battery.

Step 2



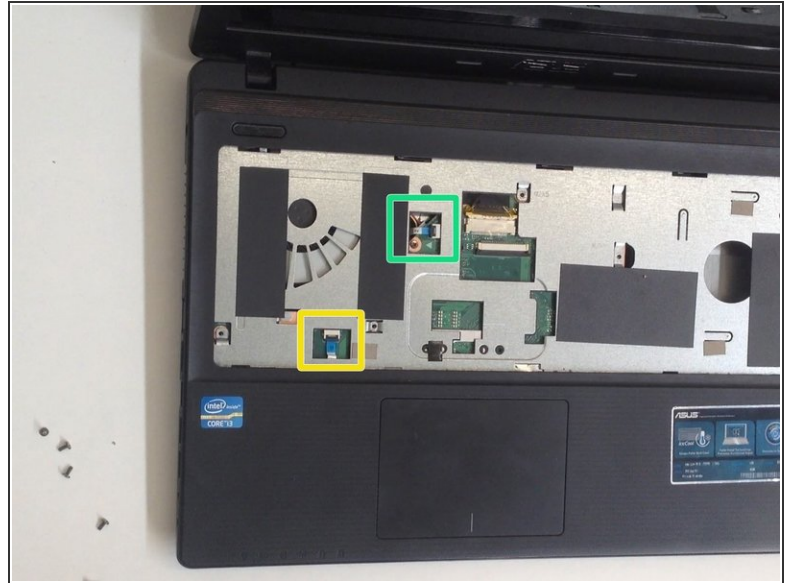
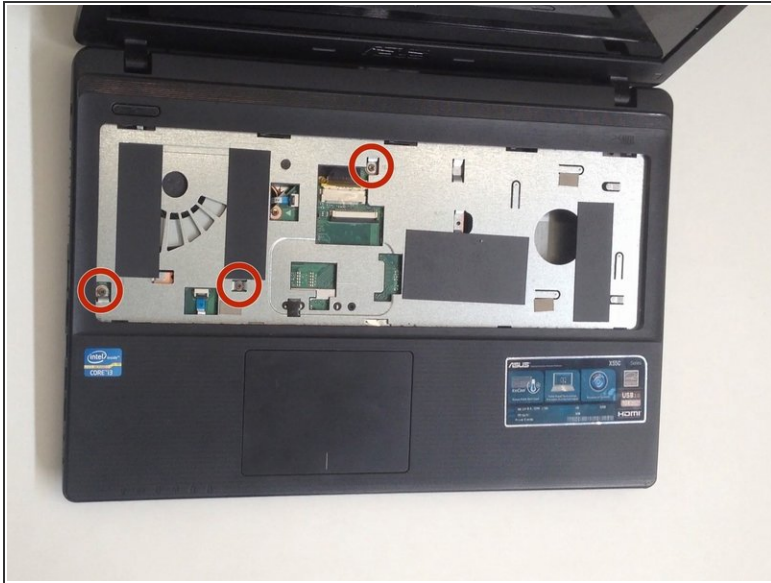
- The Keyboard is held by 5x locking clips.
- Pick up a little the one side of the Keyboard and start opening the clips one by one.
- Disconnect the Keyboard flex cable from the mother board and remove the KB.
- [Please SUBSCRIBE to my channel ツ](#)

Step 3 — Optical Drive



- Remove the screw.
- Pull out the SATA DVD Drive.

Step 4 — Motherboard



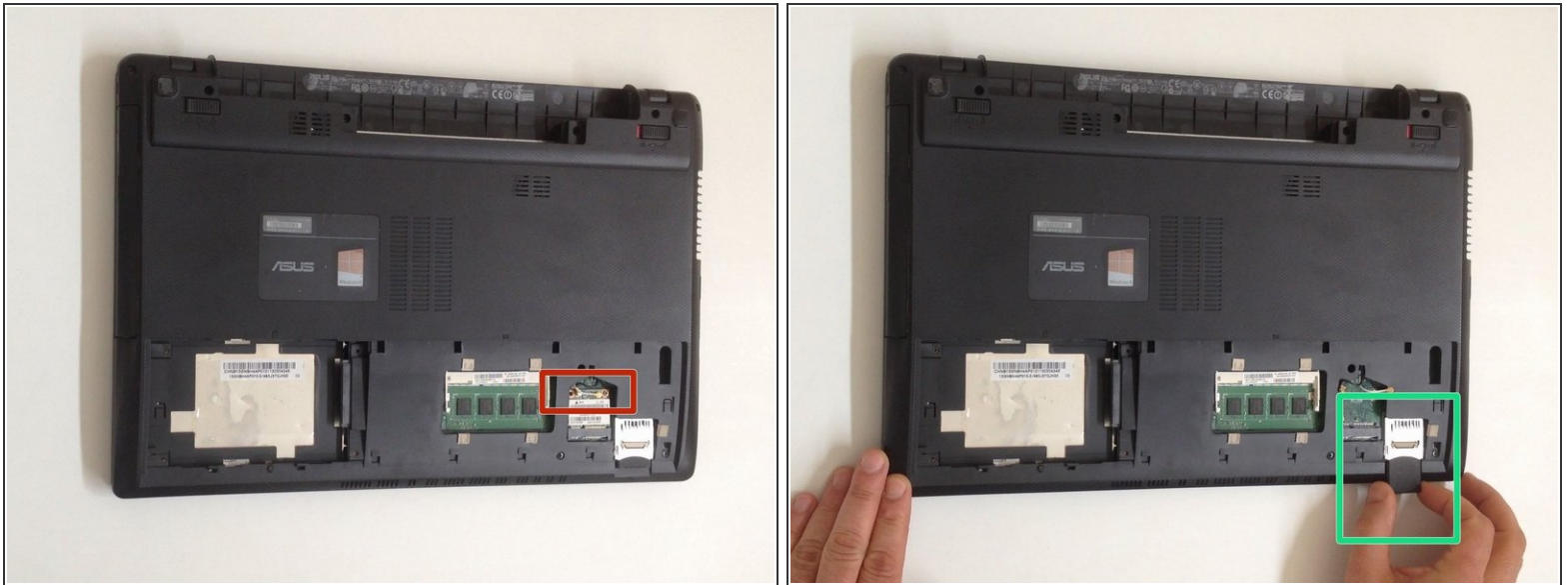
- Remove 3x Philips screws.
- Disconnect the two small flex cables:
 - Power On button flex cable
 - Touch pad flex cable

Step 5



- Unscrew the two Philips screws and remove the HDD / RAM Cover.
- Remove three screws securing the hard drive caddy (hard drive assembly).
- Slide the hard drive assembly to the left to disconnect it from the motherboard.

Step 6



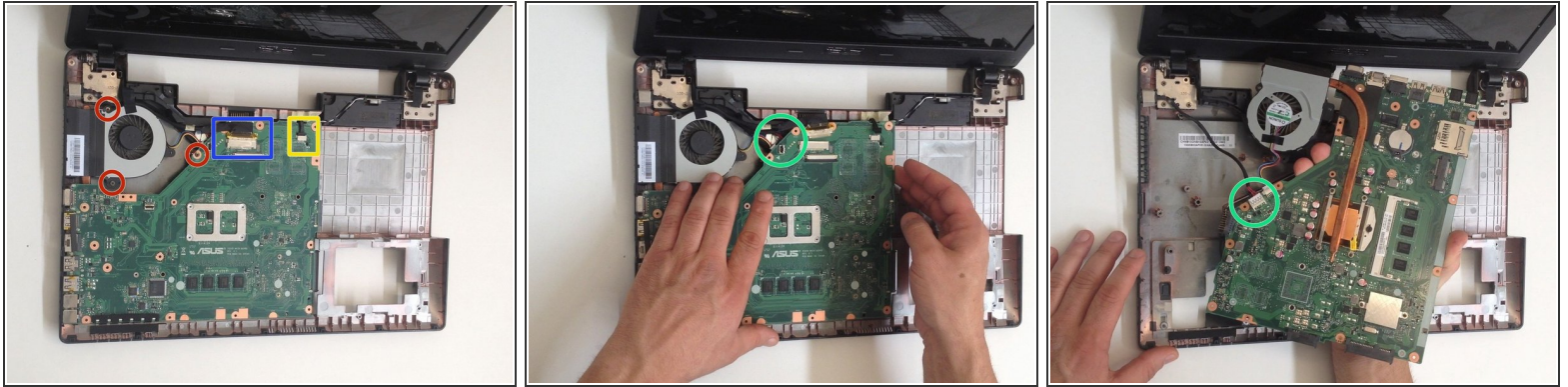
- Disconnect the two coaxial antenna cables from the Wi-Fi card.
- Remove any Memory or Dummy card.

Step 7



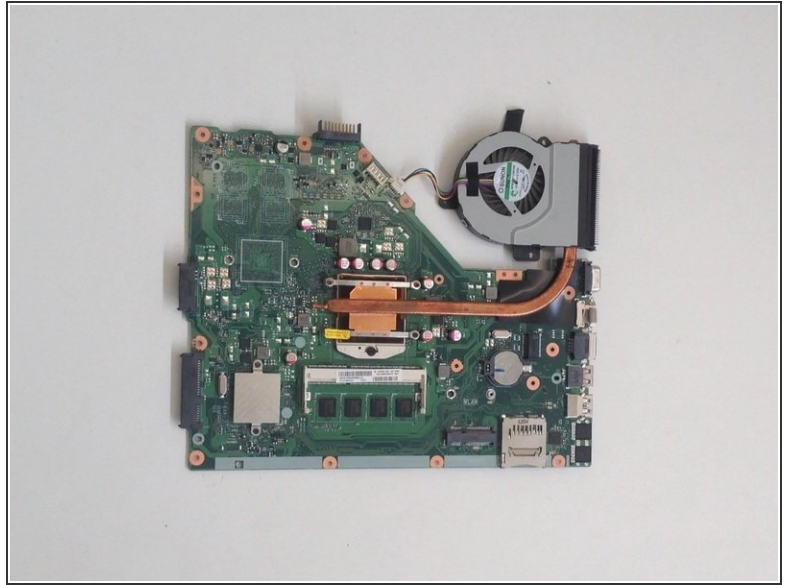
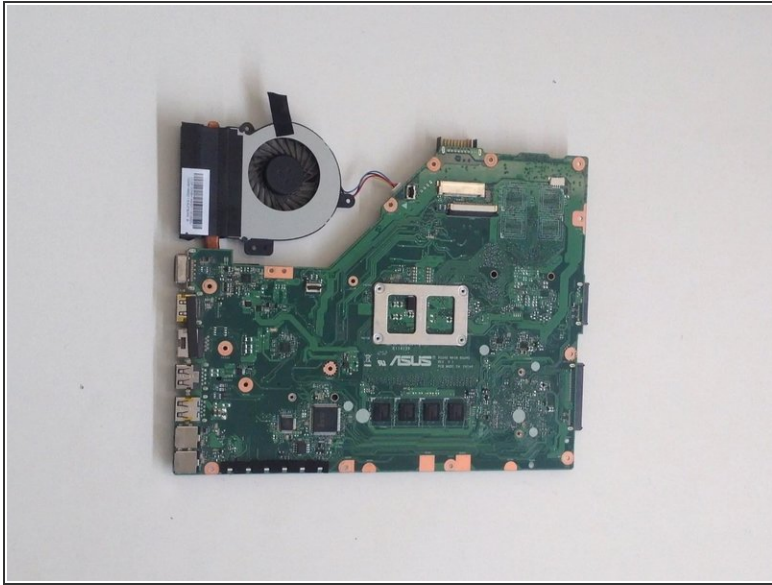
- The bottom cover is held by 10x Phillips screws. Remove them.
- With a plastic tool separate the Upper cover and remove it.

Step 8



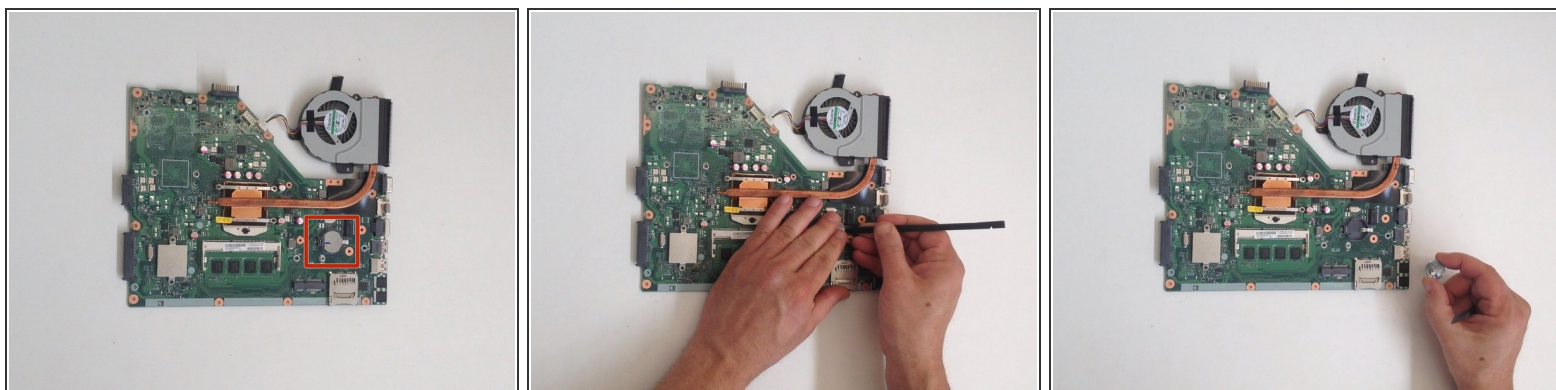
- Disconnect:
 - The Microphone cable
 - The LCD Display flex cable
- Remove 3x Phillips screws.
- Lift the board first from the right edge.
- There is another one cable, from the DC connector, connected to the underside of main board. We should spin the the board to disconnect the DC connector cable.

Step 9



- ASUS X55C iCore with 4GB no board RAM motherboard, model: **60-N0OMB1100**
- [Please SUBSCRIBE to my channel ツ](#)

Step 10 — CMOS / BIOS Battery



- Use a sharp tool to remove the Battery.
- **CR2032** - button cell lithium battery rated at 3.0 volts.
- **Did you do it successfully?**
- .

 [Please SUBSCRIBE to my channel ツ](#)

To reassemble your device, follow these instructions in reverse order.